

## Campbell® Fittings Table of Contents



### Contents

Clips, Forged Wire Rope

---

Eyebolts

---

Eyes, Lifting

---

Hooks, Grab/Slip

---

Hooks, Hoist

---

Hooks, Latch Kits For

---

Links

---

Links, Clevis

---

Links, Connecting

---

Nuts, Eye

---

Shackles

---

Swivels

---

Thimbles

---

Turnbuckles

---



The Campbell operation facilities in York, PA, and Cortland, NY, conform to Quality Standard ISO 9001.

## Carbon and Alloy Steel Fittings Standards

CooperTools forges Campbell® fittings under established quality control procedures. Dimensional tolerances meet standards adopted by the Drop Forging Association as outlined in “Standard Practices and Tolerances for Impression Die Forgings.” Working load limits for carbon and alloy steel fittings are based on predetermined design factors.

**Working Load Limit.** This is the related capacity. It is the maximum load which should ever be applied to the fittings in service, even when they are new.

**Proof Test.** This is a term designating a quality control tensile test applied to the fitting during or subsequent to the process of manufacture. It is the minimum force in pounds which the fitting has withstood in the condition and at the time it left the factory, under a test in which a constantly increasing force has been applied in direct tension to the fitting on a standard test machine.

**Ton.** Where “ton” is used in this catalog, it refers to short ton or 2,000 pounds.

**WARNING: Do not exceed Working Load Limit.**

Most of the fittings in this catalog are intended to be used in conjunction with other components in a load sustaining system. Care should be taken to select components of compatible type, grade, size and working load limit. Any abuse, misuse or alteration of the fitting may lessen the load that the fitting will sustain. Some examples of such changes and abuses are as follows:

- Twisting or side loading.
- Disfigurement.
- Deterioration of the fitting caused by strain, usage or corrosion.
- Shock loading.
- Use for a purpose other than that for which the particular fitting was intended.
- Use to carry a load in excess of the Working Load Limit.

A continual inspection program should be undertaken to discover gouges, distortion, cracks, elongation or stretching, spread in the throat, opening of hooks, severe wear, or other damage. CooperTools does not accept any liability for damages which may result from alteration, misuse or abuse of the product or from use in excess of the Working Load Limit.

Key to Figure Number Designations	S – Self-Colored
	G – Galvanized
	A – Alloy
	H – Heat Treated

**NOTICE: The product specifications and dimensions are as accurate as possible at the time of printing. However, because we are constantly improving the quality and design of our products, they can change without notice.**

## Stainless Forged Fittings

Campbell® stainless forged fittings are used in place of carbon steel fittings for marine and food processing applications and where fittings are exposed to oxidizing acids, alkalis, neutral brines and detrimental temperatures. They have won wide acceptance in aviation, boating, cements, chemicals, fertilizers, fishing, food processing, hydrodynamics and nuclear energy. Many are used in the fields of oceanography, petroleum, pulp and paper manufacturing, sewage disposal, textiles, water purification and yachting.

All stainless fittings are made of Type 316 stainless steel and have an electro-polished finish for improved stress relief, surface appearance and resistance to corrosion and chemical attack.

**NOTICE: The product specifications and dimensions are as accurate as possible at the time of printing. However, because we are constantly improving the quality and design of our products, they can change without notice.**



### ADVERTENCIA

- Para prevenir la posibilidad de lesiones graves:
- **NO EXCEDA** el límite de carga de trabajo (WLL).
  - **NO LA UTILICE** choque o golpee la carga.
  - **NO USE** el accesorio si se ve deformado o desgastado.



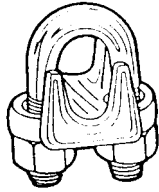
### WARNING

- To prevent the possibility of serious bodily injury:
- **DO NOT EXCEED** the working load limit.
  - **DO NOT** shock or impact load.
  - **DO NOT USE** if the fitting is visibly distorted or worn.

## Forged Wire Rope Clips

1000-G Forged      Stainless Steel  
3300 Malleable Iron

READ AND UNDERSTAND THESE WARNINGS AND INSTRUCTIONS BEFORE USING THESE WIRE ROPE CLIPS.



FORGED WIRE ROPE CLIP

### WARNING

- Failure to follow the Instructions For Use below and these warnings may cause death or serious injury.
- Prepare wire rope end termination only as instructed.
- **Do not use on plastic coated wire rope.**
- Periodically inspect assembly for wear and abuse, and tighten nuts to recommended torque. If worn, distorted or damaged, discard and replace.
- Always stand clear of loads being lifted.

Campbell forged carbon steel wire rope clips meet the design requirements of Federal Specification FF-C-450, Type 1, Class 1. The base is drop-forged. All parts are galvanized to ASTM A-153 specification. The U-bolt is dyed blue for identification.

Campbell stainless wire rope clips are all drop-forged and made of Type 316 Stainless Steel, and have an electro-polished finish.

Wire rope clips are used for making eye termination assemblies.

### IMPORTANT: Instructions For Use



1. Turn back specified amount of rope per clip size (shown in the table below) from the thimble. Install clip on base width from dead end of rope (U-bolt over dead end). Tighten nuts evenly to recommended torque.



2. Assemble the next clip as close to the loop as possible. Turn nuts alternately and firmly until the ropes make contact.

3. If any additional clips are required, they should be equally spaced between the first two. Tighten all nuts evenly on all clips to recommended torque (see table).

### 4. IMPORTANT!

Apply the initial load to test the assembly. This load should be equal or greater weight than loads expected in use. Retighten nuts to recommended torque. Periodically, inspect assembly and tighten nuts to recommended torque.

The efficiency rating of a properly installed clip is based upon the catalog breaking strength of wire rope. The efficiency rating for clip sizes 1/8" through 7/8" is 80% and for sizes 1" through 2" is 90%. When a pulley is used in place of thimble for turning back the rope, one additional clip should be added.

The minimum number of clips shown in the table is based on using right or lang lay wire rope, 6x19 class, or 6x37 class, IWRC or fiber core, IPS or EIPS. If Seale construction or similar large outer wire type construction in the 6x19 class is being used for 1" and larger wire rope, one additional clip should be added.

The minimum number of clips shown in the table can be used with right regular lay wire rope, 8x19 class, fiber core IPS or IPS for 1-1/2" and smaller wire rope. The number of clips shown also applies to right regular lay wire rope 18x7 class, fiber core IPS or XIPS for 1-3/4" and smaller wire rope.

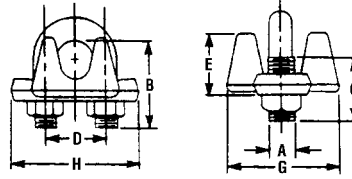
For classes of wire rope not mentioned, additional clips may be necessary to make a proper termination. Do not use on plastic coated wire rope.

Clip Size,	Minimum No. of Clips	L Amount of Rope to Turn Back		Torque Foot Weight		
		in.	mm	lb	kg	
1/8	3	2	3 1/2	89	5	2
3/16	5	2	4	102	8	4
1/4	6	2	5	127	15	7
5/16	8	2	5 1/2	140	30	14
3/8	10	2	6 1/2	165	45	20
7/16	11	2	7	178	65	30
1/2	13	3	11 1/2	292	65	30
9/16	14	3	12	305	95	43
5/8	16	3	12	305	95	43
3/4	19	4	18	457	130	59
7/8	22	4	19	483	225	102
1	25	5	26	660	225	102
1 1/8	29	6	34	864	225	102
1 1/4	32	7	44	1118	360	163
1 1/2	38	8	54	1372	360	163
1 3/4	44	8	61	1549	590	268
2	51	8	71	1803	750	341

**NOTE:** If more clips are used than specified in the table above, the amount of rope turnback should be increased accordingly. The data above based on use of Brewer-Titchener forged wire rope clips on new rope.

# 1000-G, Wire Rope Clips (Forged Carbon Steel, Galvanized)

- Standard Material: Base is drop-forged carbon steel, with heavy hex nuts
- Standard Finish: Galvanized to ASTM A-153 specification
- Other Features: Meets specification FF-C-450, Type 1, Class 1
- Note: See application and warning information



For Rope Dia.	Cat. No.	UPC No. 020418	Min. No. of Clips Req.	Dimensions												Clips Per Box	Weight/100	
				A UNC-2A		B	C		D		E		G		H		lb	kg
in. mm				in. mm	in. mm	in. mm	in. mm	in. mm	in. mm	in. mm	in. mm	in. mm	in. mm	in. mm	in. mm			
1/8	3	6990234	099908	2	7/32	6 3/4	19 7/16	11 9/16	14 7/16	11 29/32	737	1 1/16	27	100	6	3		
3/16	5	6990334	099915	2	1/4	6 15/16	24 9/16	14 5/8	16 1/2	13 15/16	813	1 1/8	29	100	10	5		
1/4	6	6990434	099922	2	5/16	8 1 1/32	26 5/8	16 23/32	18 2 1/32	17 1 1/8	29	1 7/16	37	100	18	8		
5/16	8	6990534	099939	2	3/8	10 1 5/16	33 13/16	21 7/8	22 3/4	19 1 5/16	29	1 11/16	43	100	32	15		
3/8	10	6990634	099946	2	7/16	11 1 1/2	38 15/16	24 1	25 29/32	23 1 9/16	33	1 15/16	49	75	48	22		
7/16	11	6990734	099953	2	1/2	13 2	51 1 1/8	29 1 1/8	29 1	25 1 11/16	40	2 1/4	57	50	72	33		
1/2	13	6990834	099960	3	1/2	13 2	51 1 1/8	29 1 1/8	29 1 1/16	27 1 13/16	43	2 1/4	57	50	76	35		
9/16	14	6990934	099997	3	5/8	14 2 3/8	60 1 3/8	35 1 1/4	32 1 1/2	33 1 15/16	46	2 7/16	62	50	96	44		
5/8	16	6991034	099984	3	5/8	14 2 3/8	60 1 1/2	38 1 1/4	32 1 9/32	33 2 1/16	52	2 7/16	62	25	105	48		
3/4	19	6991234	099991	4	5/8	11 2 3/4	70 1 1/2	38 1 1/2	38 1 1/2	38 2 5/16	59	2 13/16	71	25	160	73		
7/8	22	6991434	100000	4	3/4	10 3 1/8	79 1 7/8	48 1 3/4	44 1 17/32	39 2 1/2	64	3 1/4	83	25	240	109		
1	25	6991634	100017	5	3/4	10 3 1/2	89 2 1/32	52 1 7/8	48 1 3/4	44 2 3/4	70	3 3/8	86	25	270	123		
1 1/8	29	6991834	100024	6	3/4	10 3 7/8	98 2 1/8	54 2 1/32	52 1 29/32	48 3	76	3 5/8	92	10	340	154		
1 1/4	32	6992034	100031	7	7/8	9 4 1/4	108 2 3/8	60 2 1/4	57 2 7/32	56 3 1/4	83	4	102	10	468	212		
1 1/2	38	6992434	100048	8	7/8	9 4 15/16	125 2 1/4	57 2 9/16	65 2 9/16	65 3 1/2	89	4 3/8	111	10	600	272		
1 3/4	44	6992835	100055	8	1 1/8	29 5 13/16	148 2 3/4	70 3 1/16	78 2 3/4	70 3 3/4	95	5 5/16	135	Bulk	900	409		
2	51	6993235	100062	8	1 1/4	32 6 1/2	165 3	76 3 3/8	86 3 1/8	79 4 1/4	108	5 7/8	149	Bulk	1,230	558		

# 3300, Wire Rope Clips (Malleable Iron, Zinc Plated)

- Standard Material: Base is cast malleable iron with regular hex nuts
- Note: See application and warning information.



3300

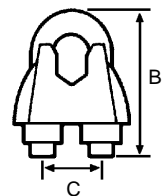


Fig. No.	Size	Dimensions								Cat. No.	UPC No. 020418	Shelf Pack	Case Pack	Case Wgt. lb	Case Wgt. kg	Case Cubes	
		A	B	C		D											
	in. mm	in. mm	in. mm	in. mm	in. mm	in. mm	in. mm	in. mm	in. mm								
3300	1/8	3	1 1/8	3	1	25	1 1/2	13	--	--	T7670419	201691	10	300	12	5	.41
3300	3/16	5	3 1/16	5	1 1/16	27	9/16	14	--	--	T7670429	201707	10	300	24	11	.32
3300	1/4	6	1 1/4	6	1 1/2	38	1 1/16	17	--	--	T7670439	201714	10	200	26 1/2	12	.41
3300	5/16	8	5 1/16	8	1 1/2	38	1 1/16	17	--	--	T7670449	201721	10	200	29	13	.41
3300	3/8	9	3 3/8	10	2	51	7/8	22	--	--	T7670459	201738	10	200	43 1/2	20	.46
3300	1/2	13	1 1/2	13	2 1/2	64	1	25	--	--	T7670479	201745	10	100	40 1/2	18	.74
3300	5/8	16	5 5/8	16	2 3/4	70	1 3/16	30	--	--	T7670489	201752	10	100	53	24	.74
3300	3/4	19	3 3/4	19	3 1/16	78	1 11/32	34	--	--	T7670499	180460	5	50	41 1/2	19	.80

**ADVERTENCIA**

Para prevenir la posibilidad de lesiones graves:

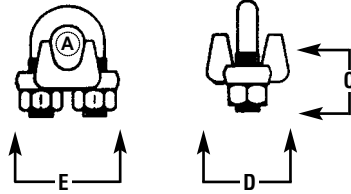
- **NO EXCEDA** el límite de carga de trabajo (WLL).
- **NO LA UTILICE** choque o golpee la carga.
- **NO USE** el accesorio si se ve deformado o desgastado.

**WARNING**

To prevent the possibility of serious bodily injury:

- **DO NOT EXCEED** the working load limit.
- **DO NOT** shock or impact load.
- **DO NOT USE** if the fitting is visibly distorted or worn.

## M-43-ST, Wire Rope Clips (Stainless Steel)



- Standard Material: Forged Type 316 Stainless Steel
- Standard Finish: Electro-polish

For Rope Diameter		Dimensions										Weight Per 100	
A	Cat. No.	UPC No.	B	C		D		E		Clips Per Fastening	in.	mm	
in. mm		020418	in. mm	in. mm	in. mm	in. mm	in. mm	in. mm	in. mm				
1/8 3	6403002	094101	5/32 4	9/16 14	3/4 19	3/4 19	3/4 19	3/4 19	3/4 19	2	4	2	
3/16 5	6403003	094118	1/4 6	3/4 19	7/8 22	1 1/8 29	1 1/8 29	1 1/8 29	1 1/8 29	2	10	5	
1/4 6	6403004	094125	5/16 8	1 25	1 1/8 29	1 3/8 35	1 3/8 35	1 3/8 35	1 3/8 35	2	18	8	
3/8 9	6403006	094132	1/2 13	1 3/8 35	1 1/2 38	2 51	2 51	2 51	2 51	2	52	23	
1/2 13	6403008	094149	9/16 14	2 51	1 7/8 48	2 5/16 59	2 5/16 59	2 5/16 59	2 5/16 59	3	89	40	
5/8 16	6403010	094156	9/16 14	2 51	2 1/8 54	2 1/2 64	2 1/2 64	2 1/2 64	2 1/2 64	3	105	47	

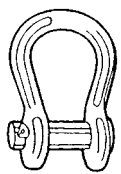
## Shackles

- 416-S Round Pin Chain
- 419-S, G Screw Pin Anchor
- 422-G Screw Pin Chain

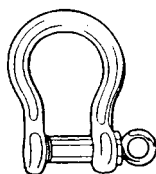
- 999-G, A Safety Anchor
- 998-G Safety Chain
- Stainless Round Pin Anchor

- Stainless Screw Pin Anchor
- Stainless Safety Anchor

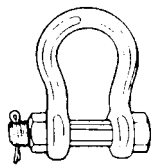
READ AND UNDERSTAND THESE WARNINGS AND INSTRUCTIONS BEFORE USING SHACKLES.



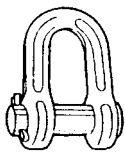
ROUND PIN ANCHOR SHACKLE



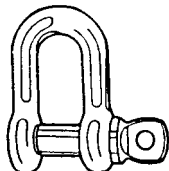
SCREW PIN ANCHOR SHACKLE



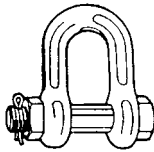
SAFETY ANCHOR SHACKLE



ROUND PIN CHAIN SHACKLE



SCREW PIN CHAIN SHACKLE



SAFETY CHAIN SHACKLE

### WARNING

- Failure to follow the Instructions For Use below and these warnings may cause death or serious injury.
- Use shackles only as indicated.
- Shackles must always be inspected for wear, distortion and damage before use. If the pin or bow is worn, distorted or damaged, discard the entire shackle and replace.
- Do not use round pin shackles in rigging applications.
- Screw pin shackles should not be used if there will be movement on the pin. Movement could cause the pin to unscrew and drop the load.
- Always stand clear of loads being lifted.

## Shackles (continued)

Campbell carbon and alloy shackles are all drop-forged. The pins and bolts are made of alloy steel. The shackles all meet the design requirements of Federal Specification RR-C-271, Type IV. Galvanizing is to ASTM A-153 specification.

Campbell Stainless shackles are all drop-forged and made of Type 316 Stainless Steel, and have an electro-polished finish.

### IMPORTANT: Instructions For Use

1. Do not exceed working load limit (WLL). See tables below.
2. The standard WLL given applies to in-line loading (perpendicular to the pin). When the loading is at an angle, the WLL is reduced as shown in the table below.
3. Any angular loads must be on the bow. All straight loading should be on the pin.

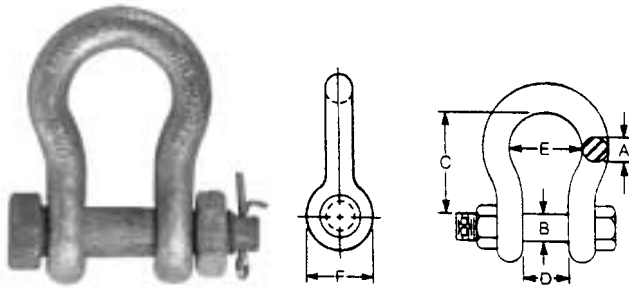
**WLL in Tons—Campbell Carbon and Alloy Shackles**

Shackle Size, in.	mm	In-Line Load WLL		45° Load WLL		90° Load WLL	
		ton	kg	ton	kg	ton	kg
3/16	5	1/3	302	1/5	181	1/6	151
1/4	6	1/2	454	1/3	302	1/4	227
5/16	8	3/4	680	1/2	454	1/3	302
3/8	10	1	907	2/3	605	1/2	454
3/8 Alloy	10	2	1814	1 1/3	1210	1	907
7/16	11	1 1/2	1361	1	907	3/4	680
1/2	13	2	1814	1 1/3	1210	1	907
1/2 Alloy	13	3 1/2	3024	2 1/3	2117	1 1/2	1361
5/8	16	3 1/4	2948	2 1/4	2041	1 1/2	1361
3/4	19	4 3/4	4309	3 1/3	3024	2 1/3	2117
3/4 Alloy	19	7	6350	5	4536	3 1/2	3175
7/8	22	6 1/2	5897	4 1/2	4082	3 1/4	2948
1	25	8 1/2	7711	6	5443	4 1/4	3856
1 Alloy	25	12 1/2	11338	8 3/4	7936	6 1/4	5668
1 1/8	29	9 1/2	8618	6 2/3	6048	4 3/4	4309
1 1/4	32	12	10886	8 1/3	7560	6	5443
1 1/4 Alloy	32	18	16326	12 1/2	11338	9	8163
1 3/8	35	13 1/2	12247	9 1/2	8618	6 3/4	6123
1 1/2	38	17	15422	11 7/8	10773	8 1/2	7711
1 1/2 Alloy	38	30	27215	21	19051	15	13608
1 5/8	41	20	18144	14	12700	10	9072
1 3/4 Alloy	44	40	36287	28	25401	12 1/2	11340
2	51	35	31751	24 1/2	22226	17 1/2	15876
2 Alloy	51	50	45359	35	31751	25	22679
2 1/2	64	55	49895	38 1/2	34926	27 1/2	24947
3	76	75	68038	52 1/2	47627	37 1/2	34019
3 1/2	89	100	90718	70	63502	50	45359

**WLL in Lbs.—Campbell Stainless Shackles**

Shackle Size, in.	mm	In-Line Load WLL		45° Load WLL		90° Load WLL	
		lb	kg	lb	kg	lb	kg
1/4	6	1000	454	700	318	500	227
5/16	8	1500	681	1050	476	750	363
3/8	10	2000	907	1400	635	1000	454
7/16	11	3000	1362	2100	953	1500	681
1/2	13	4000	1814	2800	1270	2000	907
5/8	16	6000	2722	4200	1905	3000	1362
3/4	19	8000	3629	5600	2540	4000	1814
7/8	22	10000	4540	7000	3175	5000	2268
1	25	12000	5443	8400	3810	6000	2722

### 999, Anchor Shackles – Safety Drop-Forged Carbon Steel and Alloy Steel



- Standard Material: Shackle bodies are drop-forged carbon steel. Alloy shackles are all alloy steel
- Standard Finish self-colored or galvanized to meet ASTM A-153 specifications
- Working load limit permanently shown on every shackle
- Design Factor: 6 to 1
- 999-G, safety meets the design requirements of Federal Specification RR-C-271, Type IVA, Grade A, Class 3

### 999-G, Drop-Forged Carbon Steel – Galvanized

Size in. mm	Cat. No.	UPC No. 020418	Working Load Limit		Tolerances				Dimensions								Weight/ 100	
			ton	kg	Length ±in. ±mm	Width ±in. ±mm	B in. mm	C in. mm	D in. mm		E in. mm		F in. mm		lb	kg		
1/2	13	5390835	075520	2 1814	1/8 3	1/16 2	5/8 16	1 15/16 49	1 3/16 21	1 1/4 32	1 1/4 32	70	32					
5/8	16	5391035	075544	3 1/4 2948	1/8 3	1/16 2	3/4 19	2 7/16 62	1 1/16 27	1 9/16 40	1 7/16 37	130	59					
3/4	19	5391235	075568	4 3/4 4309	1/4 6	1/16 2	7/8 22	2 13/16 71	1 1/4 32	1 13/16 46	1 3/4 44	200	91					
7/8	22	5391435	075582	6 1/2 5897	1/4 6	1/16 2	1 25	3 1/8 79	1 7/16 37	2 1/16 52	2 51	330	150					
1	25	5391635	075605	8 1/2 7711	1/4 6	1/16 2	1 1/8 29	3 3/4 95	1 11/16 43	2 1/2 64	2 3/8 60	500	227					
1 1/8	29	5391835	075629	9 1/2 8618	1/4 6	1/16 2	1 1/4 32	4 1/4 108	1 13/16 46	2 15/16 75	2 5/8 67	710	322					
1 1/4	32	5392035	075643	12 10886	1/4 6	1/16 2	1 3/8 35	4 1/2 114	2 51	3 1/4 83	3 76	1000	454					
1 3/8	35	5392235	075667	13 1/2 12247	1/4 6	1/8 3	1 1/2 38	5 1/4 133	2 1/4 57	3 1/2 89	3 1/4 83	1300	590					
1 1/2	38	5392435	075681	17 15422	1/4 6	1/8 3	1 5/8 41	5 3/4 146	2 3/8 60	3 7/8 98	3 1/2 89	1600	726					
1 5/8	41	5392635	075711	20 18144	1/4 6	1/8 3	1 3/4 44	6 1/4 159	2 5/8 67	4 1/4 108	3 5/8 92	2300	1044					
1 3/4	44	5392835	075735	25 22680	1/4 6	1/8 3	2 51	7 178	2 7/8 73	4 3/4 121	4 102	2850	1294					
2	51	5393235	075766	35 31752	1/2 13	1/8 3	2 1/4 57	7 3/4 197	3 1/4 83	5 3/4 146	4 7/8 124	4000	1816					
2 1/2	64	5394035	075797	55 49896	1/2 13	1/8 3	2 3/4 70	10 9/16 268	4 1/8 105	7 1/4 184	5 1/2 140	9000	4086					

▽These items are made to order

### 999-A, Alloy Steel – Galvanized

Size in. mm	Cat. No.	UPC No. 020418	Working Load Limit		Tolerances				Dimensions								Weight/ 100	
			ton	kg	Length ±in. ±mm	Width ±in. ±mm	B in. mm	C in. mm	D in. mm		E in. mm		F in. mm		lb	kg		
1/2	13	5390895	182198	3 1/3 3024	1/8 3	1/16 2	5/8 16	1 15/16 49	1 3/16 21	1 1/4 32	1 1/4 32	70	32					
3/4	19	5391295	182105	7 6350	1/4 6	1/16 2	7/8 22	2 13/16 71	1 1/4 32	1 13/16 46	1 3/4 44	200	91					
1	25	5391695	182112	12 1/2 11340	1/4 6	1/16 2	1 1/8 29	3 3/4 95	1 11/16 43	2 1/2 64	2 3/8 60	500	227					
1 1/4	32	5392095	182129	18 16329	1/4 6	1/16 2	1 3/8 35	4 1/2 114	2 51	3 1/4 83	3 76	1000	454					
1 1/2	38	5392495	075698	30 27216	1/4 6	1/8 3	1 5/8 41	5 3/4 146	2 3/8 60	3 7/8 98	3 1/2 89	1600	726					
1 3/4	44	5392895	075742	40 36288	1/4 6	1/8 3	2 51	7 178	2 7/8 73	4 3/4 121	4 102	2850	1294					
2	51	5393295	075773	50 45360	1/2 13	1/8 3	2 1/4 57	7 3/4 197	3 1/4 83	5 3/4 146	4 7/8 124	4000	1816					

#### ⚠ ADVERTENCIA

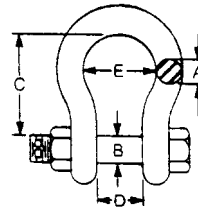
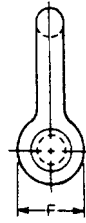
- Para prevenir la posibilidad de lesiones graves:
- **NO EXCEDA** el límite de carga de trabajo (WLL).
  - **NO LA UTILICE** choque o golpee la carga.
  - **NO USE** el accesorio si se ve deformado o desgastado.

#### ⚠ WARNING

- To prevent the possibility of serious bodily injury:
- **DO NOT EXCEED** the working load limit.
  - **DO NOT** shock or impact load.
  - **DO NOT USE** if the fitting is visibly distorted or worn.

## Anchor Shackles – Safety Type 316 Stainless Steel

- Standard Material: Forged Type 316 Stainless Steel
- Standard Finish: Electro-polish



Size		Cat. No.	UPC No. 020418	Working Load Limit		Tolerances		Dimensions								Weight Each					
in.	mm			lb	kg	Length ±in. ±mm	Width ±in. ±mm	B	C	D		E		F		lb	kg				
1/4	6	6402404	093845	1000	454	1/16	2	1/16	2	5/16	8	1 1/8	29	1/2	13	3/4	19	1 1/16	17	0.10	0.05
5/16	8	6402405	093852	1500	681	1/16	2	1/16	2	3/8	10	1 1/4	32	17/32	13	27/32	21	3/4	19	0.16	0.07
3/8	9	6402406	093869	2000	907	1/8	3	1/16	2	7/16	11	1 7/16	37	21/32	17	31/32	25	15/16	24	0.20	0.09
7/16	11	6402407	093876	3000	1362	1/8	3	1/16	2	1/2	13	1 3/4	44	23/32	18	1 5/32	29	1 1/8	29	0.50	0.23
1/2	13	6402408	093883	4000	1814	1/8	3	1/16	2	5/8	16	1 15/16	49	13/16	21	1 1/4	32	1 1/4	32	0.72	0.33
5/8	16	6402410	093890	6000	2722	1/8	3	1/16	2	3/4	19	2 7/16	62	1 1/16	27	1 9/16	40	1 7/16	37	1.38	0.63
3/4	19	6402412	093906	8000	3629	1/4	6	1/16	2	7/8	22	2 13/16	71	1 1/4	32	1 13/16	46	1 3/4	44	2.22	1.01
7/8	22	6402414	093913	10000	4540	1/4	6	1/16	2	1	25	3 1/4	63	1 7/16	37	1 13/16	46	1 3/4	44	2.22	1.01
1	25	6402416	093920	12000	5443	1/4	6	1/16	2	1 1/8	29	3 3/4	95	1 11/16	43	2 1/8	54	2	51	3.28	1.49

### ⚠ ADVERTENCIA

Para prevenir la posibilidad de lesiones graves:

- **NO EXCEDA** el límite de carga de trabajo (WLL).
- **NO LA UTILICE** choque o golpee la carga.
- **NO USE** el accesorio si se ve deformado o desgastado.

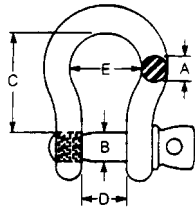
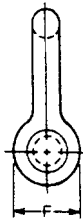
### ⚠ WARNING

To prevent the possibility of serious bodily injury:

- **DO NOT EXCEED** the working load limit.
- **DO NOT** shock or impact load.
- **DO NOT USE** if the fitting is visibly distorted or worn.



### 419, Anchor Shackles – Screw Pin Drop-Forged Carbon Steel and Alloy Steel



- Standard Material: Shackle bodies are drop-forged carbon steel. Alloy shackles are all alloy steel
- Standard Finish self-colored or galvanized to meet ASTM A-153 specifications
- Working load limit permanently shown on every shackle
- Design Factor: 6 to 1
- 419-S, 419-G Screw Pin meets the design requirements of Federal Specification RR-C-271, Type IVA, Grade A, Class 2

### 419-S, Drop-Forged Carbon Steel – Self Colored

Size in. mm	Cat. No.	UPC No. 020418	Working Load Limit		Tolerances				Dimensions								Weight/ 100				
			ton	kg	Length ±in. ±mm	Width ±in. ±mm	B in. mm	C in. mm	D in. mm		E in. mm		F in. mm		lb	kg					
1/4	6	5410405	076145	1/2	454	1/16	2	1/16	2	5/16	8	1 1/8	29	1 5/32	12	2 5/32	20	1 1/16	17	10	5
5/16	8	5410505	076176	3/4	680	1/16	2	1/16	2	3/8	10	1/4	32	1 7/32	13	2 7/32	21	3/4	19	18	8
3/8	10	5410605	076206	1	907	1/8	3	1/16	2	7/16	11	1 7/16	37	2 1/32	17	3 1/32	25	1 5/16	24	30	14
7/16	11	5410705	076237	1 1/2	1361	1/8	3	1/16	2	1/2	13	1 3/4	44	2 3/32	18	1 5/32	29	1 1/8	29	52	24
1/2	13	5410805	076268	2	1814	1/8	3	1/16	2	5/8	16	1 15/16	49	1 3/16	21	1 1/4	32	1 1/4	32	70	32
5/8	16	5411005	076282	3 1/4	2948	1/8	3	1/16	2	3/4	19	2 7/16	62	1 1/16	27	1 9/16	40	1 7/16	37	130	59
3/4	19	5411205	076305	4 3/4	4309	1/4	6	1/16	2	7/8	22	2 13/16	71	1 1/4	32	1 13/16	46	1 3/4	44	200	91
7/8	22	5411405	076329	6 1/2	5897	1/4	6	1/16	2	1	25	3 1/8	79	1 7/16	37	2 1/16	52	2	51	330	150
1	25	5411605	076343	8 1/2	7711	1/4	6	1/16	2	1 1/8	29	3 3/4	95	1 11/16	43	2 1/2	64	2 3/8	60	500	227
1 1/8	29	5411805	076367	9 1/2	8618	1/4	6	1/16	2	1 1/4	32	4 1/4	108	1 13/16	46	2 15/16	75	2 5/8	67	710	322
1 1/4	32	5412005	076381	12	10886	1/4	6	1/16	2	1 3/8	35	4 1/2	114	2	51	3 1/4	83	3	76	1000	454
1 3/8	35	5412205	076404	13 1/2	12247	1/4	6	1/8	3	1 1/2	38	5 1/4	133	2 1/4	57	3 1/2	89	3 1/4	83	1300	590
1 1/2	38	5412405	076428	17	15422	1/4	6	1/8	3	1 5/8	41	5 3/4	146	2 3/8	60	3 7/8	98	3 1/2	89	1600	726
1 3/4	44	5412805	076459	25	22680	1/4	6	1/8	3	2	51	7	178	2 7/8	73	4 3/4	121	4	102	2850	1294
2	51	5413205	076473	35	31752	1/2	13	1/8	3	2 1/4	57	7 3/4	197	3 1/4	83	5 3/4	146	4 7/8	124	4000	1816
2 1/2	64	5414005	076510	55	49896	1/2	13	1/8	3	2 3/4	70	10 9/16	268	4 1/8	105	7 1/4	184	5 1/2	140	9000	4086



#### ADVERTENCIA

Para prevenir la posibilidad de lesiones graves:

- **NO EXCEDA** el límite de carga de trabajo (WLL).
- **NO LA UTILICE** choque o golpee la carga.
- **NO USE** el accesorio si se ve deformado o desgastado.



#### WARNING

To prevent the possibility of serious bodily injury:

- **DO NOT EXCEED** the working load limit.
- **DO NOT** shock or impact load.
- **DO NOT USE** if the fitting is visibly distorted or worn.

## 419, Anchor Shackles - Screw Pin continued Drop-Forged Carbon Steel – Galvanized

Size in. mm	Cat. No.	UPC No. 020418	Working		Tolerances				Dimensions								Weight/ 100	
			Load Limit ton kg		Length ±in. ±mm	Width ±in. ±mm	B in. mm	C in. mm	D in. mm	E in. mm	F in. mm	lb	kg					
3/16	5	5410335	076138	1/2 302	1/16 2	1/16 2	1/4 6	7/8 22	3/8 10	19/32 15	9/16 14	5	2					
1/4	6	5410435	076169	1/2 454	1/16 2	1/16 2	5/16 8	1 1/8 29	15/32 12	25/32 20	1 1/16 17	10	5					
5/16	8	5410535	076190	3/4 680	1/16 2	1/16 2	3/8 10	1 1/4 32	17/32 13	27/32 21	3/4 19	18	8					
3/8	10	5410635	076220	1 907	1/8 3	1/16 2	7/16 11	1 7/16 37	21/32 17	31/32 25	15/16 24	30	14					
7/16	11	5410735	076251	1 1/2 1361	1/8 3	1/16 2	1/2 13	1 3/4 44	23/32 18	1 5/32 29	1 1/8 29	52	24					
1/2	13	5410835	076275	2 1814	1/8 3	1/16 2	5/8 16	1 15/16 49	13/16 21	1 1/4 32	1 1/4 32	70	32					
5/8	16	5411035	076299	3 1/4 2948	1/8 3	1/16 2	3/4 19	2 7/16 62	1 1/16 27	1 9/16 40	1 7/16 37	130	59					
3/4	19	5411235	076312	4 3/4 4309	1/4 6	1/16 2	7/8 22	2 13/16 71	1 1/4 32	1 13/16 46	1 3/4 44	200	91					
7/8	22	5411435	076336	6 1/2 5897	1/4 6	1/16 2	1 25	3 1/8 79	1 7/16 37	2 1/16 52	2 51	330	150					
1	25	5411635	076350	8 1/2 7711	1/4 6	1/16 2	1 1/8 29	3 3/4 95	1 11/16 43	2 1/2 64	2 3/8 60	500	227					
1 1/8	29	5411835	076374	9 1/2 8618	1/4 6	1/16 2	1 1/4 32	4 1/4 108	1 13/16 46	2 15/16 75	2 5/8 67	710	322					
1 1/4	32	5412035	076398	12 10886	1/4 6	1/16 2	1 3/8 35	4 1/2 114	2 51	3 1/4 83	3 76	1000	454					
1 3/8	35	5412235	076411	13 1/2 12247	1/4 6	1/8 3	1 1/2 38	5 1/4 133	2 1/4 57	3 1/2 89	3 1/4 83	1300	590					
1 1/2	38	5412435	076435	17 15422	1/4 6	1/8 3	1 5/8 41	5 3/4 146	2 3/8 60	3 7/8 98	3 1/2 89	1600	726					
1 3/4	44	5412835	076466	25 22680	1/4 6	1/8 3	2 51	7 178	2 7/8 73	4 3/4 121	4 102	2850	1294					
2	51	5413235	076480	35 31752	1/2 13	1/8 3	2 1/4 57	7 3/4 197	3 1/4 83	5 3/4 146	4 7/8 124	4000	1816					
2 1/2	64	5414035	076527	55 49896	1/2 13	1/8 3	2 3/4 70	10 9/16 268	4 1/8 105	7 1/4 184	5 1/2 140	9000	4086					

## Anchor Shackles - Screw Pin Drop-Forged Carbon Steel Galvanized - Bagged, 1 per Bag, 10 Bags per Carton

Size in. mm	Cat. No.	UPC No. 020418	Working		Tolerances				Dimensions								Weight/ Shelf Pack	
			Load Limit ton kg		Length ±in. ±mm	Width ±in. ±mm	B in. mm	C in. mm	D in. mm	E in. mm	F in. mm	lb	kg					
1/4	6	B5960435	154928	1/2 454	1/16 2	1/16 2	5/16 8	1 1/8 29	15/32 12	25/32 20	1 1/16 17	2	0.9					
5/16	8	B5960535	156687	3/4 680	1/16 2	1/16 2	3/8 10	1 1/4 32	17/32 13	27/32 21	3/4 19	2.7	1.2					
3/8	10	B5960635	154942	1 907	1/8 3	1/16 2	7/16 11	1 7/16 37	21/32 17	31/32 25	15/16 24	4.2	1.9					

## Anchor Shackles - Screw Pin Drop-Forged Carbon Steel Galvanized - Loose, 10 Shackles per Box

Size in. mm	Cat. No.	UPC No. 020418	Working		Tolerances				Dimensions								Weight Per Box	
			Load Limit ton kg		Length ±in. ±mm	Width ±in. ±mm	B in. mm	C in. mm	D in. mm	E in. mm	F in. mm	lb	kg					
1/4	6	5410434	076152	1/2 454	1/16 2	1/16 2	5/16 8	1 1/8 29	15/32 12	25/32 20	1 1/16 17	1.3	0.59					
5/16	8	5410534	076183	3/4 680	1/16 2	1/16 2	3/8 10	1 1/4 32	17/32 13	27/32 21	3/4 19	2.1	0.95					
3/8	10	5410634	076213	1 907	1/8 3	1/16 2	7/16 11	1 7/16 37	21/32 17	31/32 25	15/16 24	3	1.36					
7/16	11	5410734	076244	1 1/2 1361	1/8 3	1/16 2	1/2 13	1 3/4 44	23/32 18	1 5/32 29	1 1/8 29	5	2.27					

### ⚠ ADVERTENCIA

Para prevenir la posibilidad de lesiones graves:

- **NO EXCEDA** el límite de carga de trabajo (WLL).
- **NO LA UTILICE** choque o golpee la carga.
- **NO USE** el accesorio si se ve deformado o desgastado.

### ⚠ WARNING

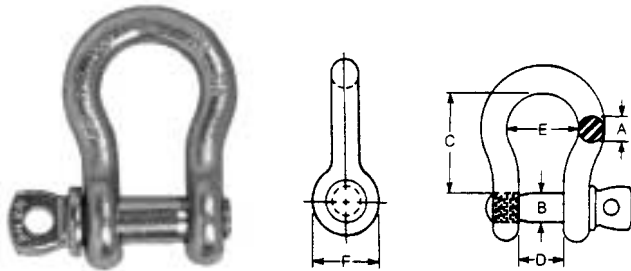
To prevent the possibility of serious bodily injury:

- **DO NOT EXCEED** the working load limit.
- **DO NOT** shock or impact load.
- **DO NOT USE** if the fitting is visibly distorted or worn.

### 419, Anchor Shackles - Screw Pin continued 419-A, Alloy Steel - Galvanized

Size in. mm	Cat. No.	UPC No. 020418	Working		Tolerances				Dimensions								Weight/ 100				
			Load ton	Limit kg	Length ±in. ±mm	Width ±in. ±mm	B in. mm	C in. mm	D in. mm		E in. mm		F in. mm		lb	kg					
3/8	10	5410695	182136	2	1814	1/8	3	1/16	2	7/16	11	1 1/16	37	2 1/32	17	3 1/32	25	1 5/16	24	30	14
1/2	13	5410895	182143	3 1/8	3024	1/8	3	1/16	2	5/8	16	1 15/16	49	1 3/16	21	1 1/4	32	1 1/4	32	70	32
3/4	19	5411295	182150	7	6350	1/4	6	1/16	2	7/8	22	2 13/16	71	1 1/4	32	1 13/16	46	1 3/4	44	200	91
1	25	5411695	182167	12 1/2	11340	1/4	6	1/16	2	1 1/8	29	3 3/4	95	1 11/16	43	2 1/2	64	2 3/8	60	500	227
1 1/4	32	5412095	182174	18	16330	1/4	6	1/16	2	1 3/8	35	4 1/2	114	2	51	3 1/4	83	3	76	1000	454

### Anchor Shackles - Screw Pin Type 316 Stainless Steel



- Drop-forged Type 316 Stainless Steel

Size in. mm	Cat. No.	UPC No. 020418	Working		Tolerances				Dimensions								Weight Each				
			Load lb	Limit kg	Length ±in. ±mm	Width ±in. ±mm	B in. mm	C in. mm	D in. mm		E in. mm		F in. mm		lb	kg					
1/4	6	6402104	093654	1000	454	1/16	2	1/16	2	5/16	8	1 1/8	29	1/2	13	3/4	19	1 1/16	17	0.10	0
5/16	8	6402105	093661	1500	681	1/16	2	1/16	2	3/8	10	1 1/4	32	1 7/32	13	2 7/32	21	3/4	19	0.16	0
3/8	10	6402106	093678	2000	907	1/8	3	1/16	2	7/16	11	1 7/16	37	2 1/32	17	3 1/32	25	1 5/16	24	0.20	0
7/16	11	6402107	093685	3000	1362	1/8	3	1/16	2	1/2	13	1 3/4	44	2 3/32	18	1 5/32	29	1 1/8	29	0.50	0
1/2	13	6402108	093692	4000	1814	1/8	3	1/16	2	5/8	16	1 15/16	49	1 3/16	21	1 1/4	32	1 1/4	32	0.72	0
5/8	16	6402110	093708	6000	2722	1/8	3	1/16	2	3/4	19	2 7/16	62	1 1/16	27	1 9/16	40	1 7/16	37	1.30	1
3/4	19	6402112	093715	8000	3629	1/4	6	1/16	2	7/8	22	2 13/16	71	1 1/4	32	1 13/16	46	1 3/4	44	2.22	1
7/8	22	6402114	093722	10000	4540	1/4	6	1/16	2	1	25	3 1/8	79	1 7/16	37	2 1/8	54	2	51	3.28	1
1	25	6402116	093739	12000	5443	1/4	6	1/16	2	1 1/8	29	3 3/4	95	1 11/16	43	2 1/2	64	2 3/8	60	5.31	2

#### ⚠ ADVERTENCIA

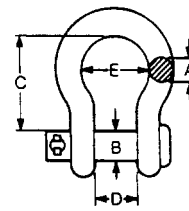
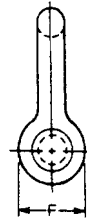
- Para prevenir la posibilidad de lesiones graves:
- **NO EXCEDA** el límite de carga de trabajo (WLL).
  - **NO LA UTILICE** choque o golpee la carga.
  - **NO USE** el accesorio si se ve deformado o desgastado.

#### ⚠ WARNING

- To prevent the possibility of serious bodily injury:
- **DO NOT EXCEED** the working load limit.
  - **DO NOT** shock or impact load.
  - **DO NOT USE** if the fitting is visibly distorted or worn.

## Anchor Shackles – Round Pin Type 316 Stainless Steel

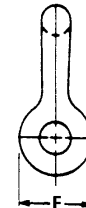
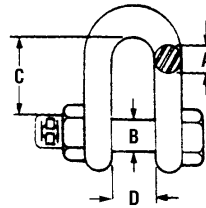
- Standard Material: Forged Type 316 Stainless Steel
- Standard Finish: Electro-polish



Size in. mm	Cat. No.	UPC No. 020418	Working Load Limit		Tolerances				Dimensions						Weight Each	
			lb	kg	Length ±in. ±mm	Width ±in. ±mm	B in. mm	C in. mm	D in. mm	E in. mm	F in. mm	lb	kg			
1/4 6	6402604	094019	1000	454	1/16 2	1/16 2	5/16 8	1 1/8 29	1/2 13	3/4 19	1 1/16 17	0.10	0			
5/16 8	6402605	094026	1500	681	1/16 2	1/16 2	3/8 10	1 1/4 32	17/32 13	27/32 21	3/4 19	0.16	0			
3/8 10	6402606	094033	2000	907	1/8 3	1/16 2	7/16 11	1 7/16 37	21/32 17	31/32 25	15/16 24	0.20	0			
7/16 11	6402607	094040	3000	1362	1/8 3	1/16 2	1/2 13	1 3/4 44	23/32 18	1 5/32 29	1 1/8 29	0.50	0			
1/2 13	6402608	094057	4000	1814	1/8 3	1/16 2	5/8 16	1 15/16 49	13/16 21	1 1/4 32	1 1/4 32	0.72	0			
5/8 16	6402610	094064	6000	2722	1/8 3	1/16 2	3/4 19	2 7/16 62	1 1/16 27	1 9/16 40	1 7/16 37	1.38	1			

## 998-G, Chain Shackles — Safety Drop-Forged Carbon Steel — Galvanized

- Standard Material: All shackle bodies are drop forged carbon steel. All pins are alloy steel
- Standard Finish: Self-colored or galvanized to ASTM A-153 specification
- Working load limit permanently shown on every shackle
- Design Factor: 6 to 1
- Other Features: Meets Federal Specification TR-C-271 Type VII, Class
- 998-G, safety meets the design requirements of Federal Specification RR-C-271, Type IVB, Grade A, Class 3



Size in. mm	Cat. No.	UPC No. 020418	Working Load Limit		Tolerances				Dimensions						Weight/ 100	
			ton	kg	Length ±in. ±mm	Width ±in. ±mm	B in. mm	C in. mm	D in. mm	F in. mm	lb	kg				
1/2 13	5380835	075230	2	1814	1/8 3	1/16 2	5/8 16	1 11/16 43	13/16 21	1 1/4 32	75	34				
5/8 16	5381035	075254	3 1/4	2948	1/8 3	1/16 2	3/4 19	2 51	1 1/16 27	1 7/16 37	130	59				
3/4 19	5381235	075278	4 3/4	4309	1/4 6	1/16 2	7/8 22	2 5/16 59	1 1/4 32	1 3/4 44	220	100				
1 25	5381635	075315	8 1/2	7711	1/4 6	1/16 2	1 1/8 29	3 1/4 83	1 11/16 43	2 3/8 60	450	204				
1 1/4 32	5382035	075353	12	10886	1/4 6	1/16 2	1 3/8 35	3 7/8 98	2 51	3 76	930	422				
1 3/8 35	5382235	075377	13 1/2	12247	1/4 6	1/8 3	1 1/2 38	5 1/4 133	2 1/4 57	3 1/8 79	1100	499				

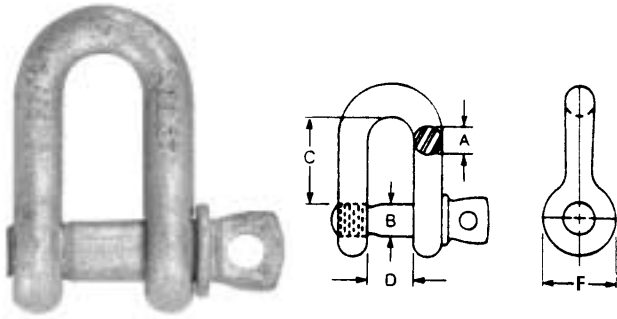
### ⚠ ADVERTENCIA

- Para prevenir la posibilidad de lesiones graves:
- **NO EXCEDA** el límite de carga de trabajo (WLL).
  - **NO LA UTILICE** choque o golpee la carga.
  - **NO USE** el accesorio si se ve deformado o desgastado.

### ⚠ WARNING

- To prevent the possibility of serious bodily injury:
- **DO NOT EXCEED** the working load limit.
  - **DO NOT** shock or impact load.
  - **DO NOT USE** if the fitting is visibly distorted or worn.

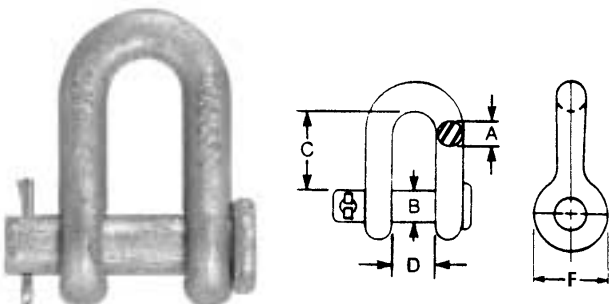
### 422, Chain Shackles-Screw Pin Drop-Forged Carbon Steel



- Standard Material: All shackle bodies are drop forged carbon steel. All pins are alloy steel
- Standard Finish: Galvanized to ASTM A-153 specification
- Working load limit permanently shown on every shackle
- Design Factor: 6 to 1
- Other Features: Meets Federal Specification TR-C-271 Type VII, Class
- 422-G Screw Pin meets the design requirements of Federal Specification RR-C-271, Type IVB, Grade A, Class 2

Size		Cat. No.	UPC No. 020418	Working Load Limit		Tolerances Length		Tolerances Width		Dimensions				Weight/100					
in.	mm			ton	kg	±in.	±mm	±in.	±mm	B	C	D		F		lb	kg		
1/4	6	5430435	076909	1/2	454	1/16	2	1/16	2	5/16	8	7/8	22	15/32	12	11/16	17	11	5
5/16	8	5430535	076923	3/4	680	1/16	2	1/16	2	3/8	10	1	25	17/32	13	13/16	21	17	8
3/8	10	5430635	076947	1	907	1/8	3	1/16	2	7/16	11	1 1/4	32	21/32	17	15/16	24	30	14
1/2	13	5430835	076985	2	1814	1/8	3	1/16	2	5/8	16	1 11/16	43	13/16	21	1 1/4	32	75	34
5/8	16	5431035	077005	3 1/4	2948	1/8	3	1/16	2	3/4	19	2	51	1 1/16	27	1 7/16	37	130	59
3/4	19	5431235	077029	4 3/4	4309	1/4	6	1/16	2	7/8	22	2 5/16	59	1 1/4	32	1 3/4	44	220	100
7/8	22	5431435	077043	6 1/2	5897	1/4	6	1/16	2	1	25	2 7/8	73	1 7/16	37	2	51	360	163
1	25	5431635	077067	8 1/2	7711	1/4	6	1/16	2	1 1/8	29	3 1/4	83	1 11/16	43	2 3/8	60	450	204
1 1/4	32	5432035	077104	12	10886	1/4	6	1/16	2	1 3/8	35	3 7/8	98	2	51	3	76	930	422

### 416, Chain Shackles-Round Pin Drop-Forged Carbon Steel



- Standard Material: All shackle bodies are drop-forged carbon steel. All pins are alloy steel
- Standard Finish: Self-colored
- Working load limit permanently shown on every shackle
- Design Factor: 6 to 1
- Other Features: Meets Federal Specification RR-C-271 Type VII, Class
- 416-S Round Pin meets the design requirements of Federal Specification RR-C-271, Type IVB, Grade A, Class 1

See chart on top of next page. →

#### ⚠ ADVERTENCIA

Para prevenir la posibilidad de lesiones graves:

- **NO EXCEDA** el límite de carga de trabajo (WLL).
- **NO LA UTILICE** choque o golpee la carga.
- **NO USE** el accesorio si se ve deformado o desgastado.

#### ⚠ WARNING

To prevent the possibility of serious bodily injury:

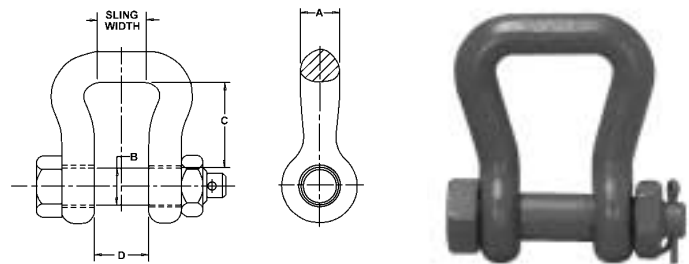
- **DO NOT EXCEED** the working load limit.
- **DO NOT** shock or impact load.
- **DO NOT USE** if the fitting is visibly distorted or worn.

# 416-S, Drop-Forged Carbon Steel-Self Colored

Size in. mm	Cat. No.	UPC No. 020418	Working Load Limit		Tolerances				Dimensions						Weight/ 100	
			ton	kg	Length ±in. ±mm	Width ±in. ±mm	B		C		D		F		lb	kg
5/16 8	5420505	076558	3/4	680	1/16 2	1/16 2	3/8 10	1 25	17/32 13	13/16 21	17	8				
3/8 10	5420605	076572	1	907	1/8 3	1/16 2	7/16 11	1 1/4 32	21/32 17	15/16 24	30	14				
7/16 11	5420705	076596	1 1/2	1361	1/8 3	1/16 2	1/2 13	1 1/2 38	23/32 18	1 1/8 29	46	21				
1/2 13	5420805	076619	2	1814	1/8 3	1/16 2	5/8 16	1 11/16 43	13/16 21	1 1/4 32	75	34				
5/8 16	5421005	076633	3 1/4	2948	1/8 3	1/16 2	3/4 19	2 51	1 1/16 27	1 7/16 37	130	59				
3/4 19	5421205	076657	4 3/4	4309	1/4 6	1/16 2	7/8 22	2 5/16 59	1 1/4 32	1 3/4 44	220	100				

## Synthetic Sling Shackle-Safety Drop-Forged Alloy Steel

- Standard Material: Alloy Steel
- Standard Finish: Painted orange
- Design Factor: 5 to 1
- Increased bow radius provides wider load bearing surface than traditional shackles
- Allows better load distribution on internal fibers



Sling Width		Cat. No.	UPC No. 020418	Working Load Limit		Dimensions								Weight Each	
in.	mm			ton	kg	A	B		C		D		lb	kg	
1	25	5361095	187261	3 1/4	2948	.781	19.84	.75	19.05	1.688	42.88	1.063	27.00	1.7	.77
1 1/2	38	5361295	187278	6 1/2	5896	.906	23.01	.875	22.23	2.00	50.80	1.25	31.75	4.3	1.95
2	51	5361495	187285	8 3/4	7938	1.03	26.16	1.00	25.40	2.875	73.03	1.438	36.53	7	3.18
3	76	5361895	187292	12 1/2	11340	1.125	28.58	1.25	31.75	3.75	95.25	1.813	46.05	9.1	4.13
4	102	5362095	187308	21	19051	1.375	34.93	1.50	38.10	5.75	146.05	2.25	57.15	22.1	10.03
5	127	5362495	187315	35	31751	1.75	44.45	2.00	50.80	6.75	171.45	2.875	73.03	51.5	23.38
6	152	5363295	187322	50	45359	2.00	50.80	2.25	57.15	7.00	177.80	3.25	82.55	87.3	39.63

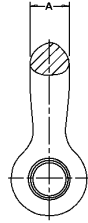
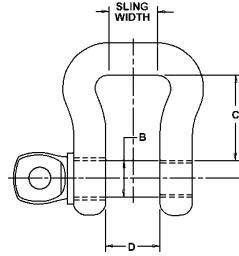
### ⚠️ ADVERTENCIA

- Para prevenir la posibilidad de lesiones graves:
- **NO EXCEDA** el límite de carga de trabajo (WLL).
  - **NO LA UTILICE** choque o golpee la carga.
  - **NO USE** el accesorio si se ve deformado o desgastado.

### ⚠️ WARNING

- To prevent the possibility of serious bodily injury:
- **DO NOT EXCEED** the working load limit.
  - **DO NOT** shock or impact load.
  - **DO NOT USE** if the fitting is visibly distorted or worn.

## Synthetic Sling Shackle-Screw Pin Drop-Forged Alloy Steel



- Standard Material: Alloy Steel
- Standard Finish: Painted orange
- Design Factor: 5 to 1
- Increased bow radius provides wider load bearing surface than traditional shackles
- Allows better load distribution on internal fibers

Sling Width		Cat. No.	UPC No. 020418	Working Load Limit		Dimensions								Weight Each	
in.	mm			ton	kg	A		B		C		D		lb	kg
1	25	5351095	187193	3¼	2948	.781	19.84	.75	19.05	1.688	42.88	1.063	27.00	1.4	.64
1½	38	5351295	187209	6½	5896	.906	23.01	.875	22.23	2.00	50.80	1.25	31.75	3.6	1.63
2	51	5351495	187216	8¾	7938	1.03	26.16	1.00	25.40	2.875	73.03	1.438	36.53	6.3	2.86
3	76	5351895	187223	12½	11340	1.125	28.58	1.25	31.75	3.75	95.25	1.813	46.05	8.2	3.7
4	102	5352095	187230	21	19051	1.375	34.93	1.50	38.10	5.75	146.05	2.25	57.15	19.1	8.67
5	127	5352495	187247	35	31751	1.75	44.45	2.00	50.80	6.75	171.45	2.875	73.03	44.2	20.07
6	152	5353295	187254	50	45359	2.00	50.80	2.25	57.15	7.00	177.80	3.25	82.55	75.8	34.41

### ⚠ ADVERTENCIA

Para prevenir la posibilidad de lesiones graves:

- **NO EXCEDA** el límite de carga de trabajo (WLL).
- **NO LA UTILICE** choque o golpee la carga.
- **NO USE** el accesorio si se ve deformado o desgastado.

### ⚠ WARNING

To prevent the possibility of serious bodily injury:

- **DO NOT EXCEED** the working load limit.
- **DO NOT** shock or impact load.
- **DO NOT USE** if the fitting is visibly distorted or worn.

**1010, 1015-S, G, A**    **Eye Hoist**  
**1012, 1016-S, A**    **Shank Hoist**

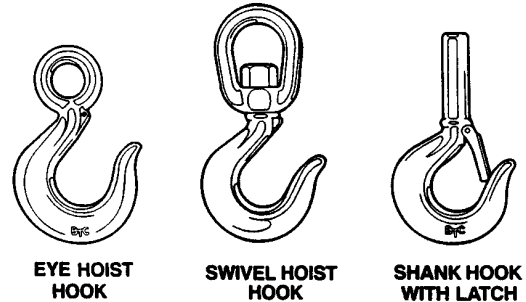
**1013, 1014-S, G, A**    **Swivel Hoist**

READ AND UNDERSTAND THESE WARNINGS AND INSTRUCTIONS BEFORE USING HOIST HOOKS.

Campbell hoist hooks are all drop-forged and heat treated. All hooks are drilled for latch assembly. Galvanizing is to ASTM A153 specification.

**IMPORTANT: Instructions For Use**

1. For hooks with latches, the latch is only designed to retain slings and rigging attachments. The latch must not support the load.
2. Swivel hoist hooks are *not* designed to swivel under load.
3. *Do not exceed working load limit (WLL).* See table below.



**Working Load Limits — Swivels**

Size	Carbon Steel WLL		Alloy WLL	
	Ton	kg	Ton	kg
2/22	3/4	680	1	907
3/23	1	907	1½	1361
4/24	1½	1361	2	1814
5/25	2	1814	3	2722
6/26	2½	2268	4	3629
7/27	3	2722	4½	4082
8/28	4	3629	5½	4989
9/29	5	4536	7	6350
11/31	7½	6804	11	9979
12	9	8165	15	13608
32	10	9072	15	13608
34	15	13608	22	19958

\*Item not manufactured

**⚠ WARNING**

- Failure to follow the Instructions For Use below and these warnings may cause death or serious injury.
- Use hoist hooks only as indicated.
- **Never** point load a hook.
- Do not use hooks for lifting personnel.
- Hooks must always be inspected for wear, distortion and damage before use. If worn, distorted or damaged, discard and replace.
- **Do not weld on hooks.** If a hook is exposed to weld spatter, discard that hook.
- Always stand clear of loads being lifted.

**⚠ ADVERTENCIA**

Para prevenir la posibilidad de lesiones graves:

- **NO EXCEDA** el límite de carga de trabajo (WLL).
- **NO LA UTILICE** choque o golpee la carga.
- **NO USE** el accesorio si se ve deformado o desgastado.

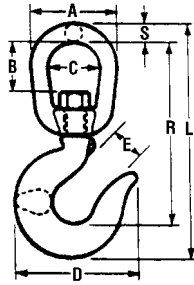
**⚠ WARNING**

To prevent the possibility of serious bodily injury:

- **DO NOT EXCEED** the working load limit.
- **DO NOT** shock or impact load.
- **DO NOT USE** if the fitting is visibly distorted or worn.



### 1013, Swivel Hoist Hooks



- Standard Material: Drop-forged carbon steel or alloy and heat treated
- Standard Finish: Self-colored or galvanized to ASTM A-153 specification. Alloy hooks are painted orange
- Design Factor: 5 to 1 for carbon steel; 4 to 1 for alloy steel
- Other Features: All hooks are drilled for latch kits

Size No.	Self Colored		Carbon Steel Galvanized		Working Load Limit		Alloy Steel – Painted Orange		Working Load Limit		Weight Each	
	Cat. No.	UPC No. 020418	Cat. No.	UPC No. 020418	ton	kg	Cat. No.	UPC No. 020418	ton	kg	lb	kg
2	3940205	071812	--	--	3/4	680	3950215	072253	1	907	0.67	.3
4	3940405	071850	--	--	1 1/2	1361	3950415	072277	2	1814	1.56	.7
5	3940505	071874	--	--	2	1814	3950515	072284	3	2722	2.73	1.2
7	3940705	071911	--	--	3	2722	3950715	072291	4 1/2	4082	4.85	2.2
9	3940905	071959	--	--	5	4536	--	--	7	6350	9.63	4.4
11	3941105	071997	--	--	7 1/2	6804	3951115	072307	11	9979	13.76	6.2
12	3941205	▽072017	--	--	9	8165	3951215	072314	15	13636	19.76	9.0

▽ These items are made to order

Size No.	A		B		C		D		E		F		S		L		R	
	in.	mm	in.	mm	in.	mm	in.	mm	in.	mm	in.	mm	in.	mm	in.	mm	in.	mm
2	2	51	1	25	1 1/4	32	3	76	1	25	7/8	22	3/8	10	5 1/2	140	4 3/8	111
4	2 1/2	64	1 1/4	32	1 1/2	38	3 9/16	90	1 1/8	29	1	25	1/2	13	7 1/8	181	5 5/8	143
5	3	76	1 5/8	41	1 3/4	44	4	102	1 1/4	32	1 1/8	29	5/8	16	8 9/32	210	6 9/16	167
7	3 1/2	89	1 3/4	44	2	51	4 15/16	125	1 7/32	39	1 5/16	33	3/4	19	9 7/16	240	8	203
9	4 1/2	114	2 1/4	57	2 1/2	64	6 15/32	164	1 15/16	49	1 5/8	41	1	25	12 1/2	318	9 11/16	246
11	5 5/8	143	2 3/4	70	3 1/8	79	7 23/32	196	2 5/16	59	2	51	1 1/4	32	15	381	11 1/2	292
12	5 5/8	143	2 5/8	67	3 1/8	79	7 13/16	198	2 5/16	59	2 1/8	54	1 1/4	32	16 1/32	407	12 1/4	311

#### ⚠ ADVERTENCIA

Para prevenir la posibilidad de lesiones graves:

- **NO EXCEDA** el límite de carga de trabajo (WLL).
- **NO LA UTILICE** choque o golpee la carga.
- **NO USE** el accesorio si se ve deformado o desgastado.

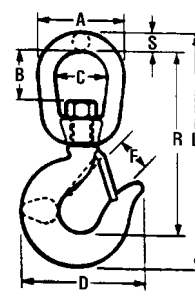
#### ⚠ WARNING

To prevent the possibility of serious bodily injury:

- **DO NOT EXCEED** the working load limit.
- **DO NOT** shock or impact load.
- **DO NOT USE** if the fitting is visibly distorted or worn.

# 1014, Swivel Hoist Hooks — Latched

- Standard Material: Drop-forged carbon steel or alloy and heat treated
- Standard Finish: Self-colored or galvanized to ASTM A-153 specification. Alloy hooks are painted orange
- Design Factor: 5 to 1 for carbon steel; 4 to 1 for alloy steel
- Other Features: All hooks are drilled for latch kits



Size No.	Self Colored		Carbon Steel Galvanized		Working Load Limit		Alloy Steel – Painted Orange		Working Load Limit		Weight Each	
	Cat. No.	UPC No. 020418	Cat. No.	UPC No. 020418	ton	kg	Cat. No.	UPC No. 020418	ton	kg	lb	kg
2	3942205	072031	3942235	072048	3/4	680	3952215	072321	1	907	0.67	.3
3	3942305	072055	3942335	072062	3/4	680	3952315	072338	1	907	0.67	.3
4	3942405	072079	3942435	072086	1 1/2	1361	3952415	072345	2	1814	1.56	.7
5	3942505	072093	3942535	072109	2	1814	3952515	072352	3	2722	2.73	1.2
7	3942705	072130	3942735	072147	3	2722	3952715	072369	4 1/2	4082	4.85	2.2
9	3942905	072178	3942935	072185	5	4536	--	--	7	6350	9.63	4.4
11	--	--	--	--	--	--	3953115	072376	11	9979	13.76	6.2
12	3943205	072239	--	--	9	8165	3953215	072383	15	13636	19.76	9.0

Size No.	A		B		C		D		E		F		S		L		R	
	in.	mm	in.	mm	in.	mm	in.	mm	in.	mm	in.	mm	in.	mm	in.	mm		
2	2	51	1	25	1 1/4	32	3	76	1	25	7/8	22	3/8	10	5 1/2	140	4 3/8	111
3	2 1/2	64	1 1/4	32	1 1/2	38	3 1/16	81	1 1/16	27	3 1/32	25	1/2	13	6 5/8	168	5 1/4	133
4	2 1/2	64	1 1/4	32	1 1/2	38	3 9/16	90	1 1/8	29	1	25	1/2	13	7 1/8	181	5 5/8	143
5	3	76	1 5/8	41	1 3/4	44	4	102	1 1/4	32	1 1/8	29	5/8	16	8 9/32	210	6 9/16	167
7	3 1/2	89	1 3/4	44	2	51	4 15/16	125	1 17/32	39	1 5/16	33	3/4	19	9 7/16	240	8	203
9	4 1/2	114	2 1/4	57	2 1/2	64	6 15/32	164	1 15/16	49	1 5/8	41	1	25	12 1/2	318	9 11/16	246
11	5 5/8	143	2 3/4	70	3 1/8	79	7 23/32	196	2 5/16	59	2	51	1 1/4	32	15	381	11 1/2	292
12	5 5/8	143	2 5/8	67	3 1/8	79	7 13/16	198	2 5/16	59	2 1/8	54	1 1/4	32	16 1/32	407	12 1/4	311

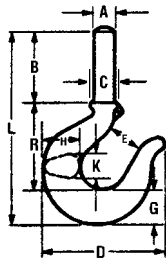
**⚠ ADVERTENCIA**

- Para prevenir la posibilidad de lesiones graves:
- **NO EXCEDA** el límite de carga de trabajo (WLL).
  - **NO LA UTILICE** choque o golpee la carga.
  - **NO USE** el accesorio si se ve deformado o desgastado.

**⚠ WARNING**

- To prevent the possibility of serious bodily injury:
- **DO NOT EXCEED** the working load limit.
  - **DO NOT** shock or impact load.
  - **DO NOT USE** if the fitting is visibly distorted or worn.

### 1012 & 1016, Shank Hooks



- Standard Material: Drop-forged carbon steel or alloy and heat treated
- Standard Finish: Self-colored on carbon hooks; alloy hooks are painted orange
- Design Factor: 5 to 1 for carbon steel; 4 to 1 for alloy steel hooks
- Other Features: All hooks are drilled for latch kits

Size No.	Carbon Steel				Working Load Limit		Alloy Steel – Self Colored				Working Load Limit		Weight Each	
	Regular		Latched		ton	kg	Regular		Latched		ton	kg	lb	kg
	Cat. No.	UPC No. 020418	Cat. No.	UPC No. 020418			Cat. No.	UPC No. 020418	Cat. No.	UPC No. 020418				
2	--	--	--	--	--	--	<b>3980215</b>	∇072567	--	--	1	907	.63	0.3
4	<b>3970405</b>	072413	--	--	1½	1361	<b>3980415</b>	072581	--	--	2	1814	1.1	0.5
5	<b>3970505</b>	072420	--	--	2	1814	--	--	--	--	--	--	1.8	0.8
7	<b>3970705</b>	072437	--	--	3	2722	--	--	--	--	--	--	3.6	1.6
9	--	--	--	--	--	--	<b>3980915</b>	072611	--	--	7	6350	6.1	2.8

∇ These items are made to order

Size No.	A	B	C	D	E	F	G	H	K	L	R											
	in.	mm	in.	mm	in.	mm	in.	mm	in.	mm	in.	mm										
2	9/16	14	2	51	1 1/16	17	2 31/32	75	1	25	7/8	22	3/4	19	7/8	22	9/16	14	5 1/16	129	2 5/16	59
4	2 3/32	18	2 1/2	64	7/8	22	3 9/16	90	1 1/8	29	1	25	1	25	1 1/8	29	1 1/16	17	6 1/4	159	2 3/4	70
5	7/8	22	2 3/4	70	1	25	4	102	1 1/4	32	1 1/8	29	1 5/32	29	1 5/16	33	1 3/16	21	6 31/32	177	3 1/16	78
7	1 5/32	29	3 1/4	83	1 5/16	33	4 15/16	125	1 17/32	39	1 5/16	33	1 7/16	37	1 5/8	41	1 1/16	27	8 5/16	211	3 5/8	92
9	1 13/32	36	3 3/4	95	1 9/16	40	6 15/32	164	1 15/16	49	1 5/8	41	1 15/16	46	2 1/8	54	1 11/32	34	10 1/4	260	4 11/16	119



#### ADVERTENCIA

Para prevenir la posibilidad de lesiones graves:

- **NO EXCEDA** el límite de carga de trabajo (WLL).
- **NO LA UTILICE** choque o golpee la carga.
- **NO USE** el accesorio si se ve deformado o desgastado.



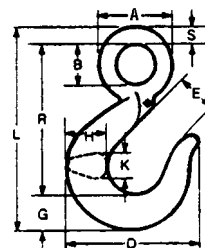
#### WARNING

To prevent the possibility of serious bodily injury:

- **DO NOT EXCEED** the working load limit.
- **DO NOT** shock or impact load.
- **DO NOT USE** if the fitting is visibly distorted or worn.

# 1010, Eye Hoist Hooks-Regular

- Standard Material: Drop-forged carbon steel or alloy and heat treated
- Standard Finish: Self-colored or galvanized to ASTM A-153 specification
- Design Factor: 5 to 1 for carbon steel; 4 to 1 for alloy steel
- Other Features: All hooks are drilled for latch kits



Size No.	Carbon Steel				Working Load Limit		Alloy Steel – Self-Colored				Weight Each	
	Self Colored Cat. No.	UPC No. 020418	Galvanized Cat. No.	UPC No. 020418	ton	kg	Cat. No.	UPC No. 020418	Working Load Limit ton	kg	lb	kg
22	3912205	071119	3912235	071126	3/4	680	3922215	071638	1	907	.54	.25
23	3912305	071133	3912335	071140	1	907	3922315	071645	1 1/2	1361	.72	.33
24	3912405	071157	3912435	071164	1 1/2	1361	3922415	071652	2	1814	1.04	.47
25	3912505	071171	3912535	071188	2	1814	3922515	071669	3	2722	1.45	.66
26	3912605	071195	--	--	2 1/2	2268	--	--	--	--	2.24	1.02
27	3912705	071218	--	--	3	2722	3922715	071676	4 1/2	4082	3.50	1.59
28	3912805	071232	--	--	4	3629	--	--	--	--	4.90	2.22
29	3912905	071256	--	--	5	4536	3922915	071683	7	6350	7.30	3.31
31	3913105	071294	--	--	7 1/2	6804	3923115	071690	11	9979	12.00	5.45
32	3913205	071317	3913235	071324	10	9072	3923215	071706	15	13608	17.60	7.99
34	--	--	--	--	--	--	3923415	071713	22	19958	35.10	15.94

Size No.	A		B		D		E		F		G		H		K		L		R		S	
	in.	mm	in.	mm	in.	mm	in.	mm	in.	mm	in.	mm	in.	mm	in.	mm	in.	mm	in.	mm	in.	mm
22	1 11/16	43	15/16	24	2 31/32	75	1 1/32	26	29/32	23	25/32	20	29/32	23	9/16	14	4 7/16	113	3 9/32	83	3/8	10
23	1 13/16	46	15/16	24	3 3/16	81	1 1/16	27	31/32	25	27/32	21	31/32	25	5/8	16	4 21/32	118	3 3/8	86	7/16	11
24	2 1/8	54	1 1/8	29	3 9/16	90	1 1/8	29	1 1/32	26	1 1/32	26	1 1/8	29	11/16	17	5 9/32	134	3 3/4	95	1/2	13
25	2 3/8	60	1 1/4	32	4	102	1 1/4	32	1 1/8	29	1 5/32	29	1 5/16	33	13/16	21	5 7/8	149	4 5/32	106	9/16	14
26	2 11/16	68	1 3/8	35	4 1/2	114	1 13/32	36	1 7/8	31	1 5/16	33	1 1/2	38	15/16	24	6 11/16	170	4 23/32	120	21/32	17
27	2 15/16	75	1 9/16	40	4 15/16	125	1 17/32	39	1 5/16	33	1 7/16	37	1 5/8	41	1 1/16	27	7 25/32	198	5 21/32	144	11/16	17
28	3 1/8	79	1 17/32	39	5 27/32	148	1 5/32	45	1 1/2	38	1 5/8	41	1 15/16	49	1 3/16	30	8 5/8	219	6 3/16	157	13/16	21
29	3 3/4	95	2	51	6 15/32	164	1 15/16	49	1 21/32	42	1 13/16	46	2 1/8	54	1 11/32	34	9 7/8	251	7 3/16	183	7/8	22
31	4 1/4	108	1 25/32	45	7 3/16	183	2 1/8	54	1 7/8	48	2	51	2 3/8	60	1 1/2	38	10 1/2	267	7 1/2	191	1	25
32	4 7/8	124	2 13/32	61	8 9/16	217	2 9/16	65	2 1/8	54	2 9/16	65	2 15/16	75	1 13/16	46	13	330	9 3/16	233	1 1/4	32
34	6 3/8	162	3 5/32	80	11 7/16	291	3 7/16	87	3 5/32	80	3 7/32	82	3 25/32	96	2 7/32	56	16 29/32	429	12 1/16	306	1 5/8	41

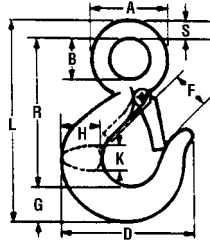
**ADVERTENCIA**

- Para prevenir la posibilidad de lesiones graves:
- **NO EXCEDA** el límite de carga de trabajo (WLL).
  - **NO LA UTILICE** choque o golpee la carga.
  - **NO USE** el accesorio si se ve deformado o desgastado.

**WARNING**

- To prevent the possibility of serious bodily injury:
- **DO NOT EXCEED** the working load limit.
  - **DO NOT** shock or impact load.
  - **DO NOT USE** if the fitting is visibly distorted or worn.

### 1015, Eye Hoist Hooks — Latched



- Standard Material: Drop-forged carbon steel or alloy and heat treated
- Standard Finish: Self-colored or galvanized to ASTM A-153 specification
- Design Factor: 5 to 1 for carbon steel; 4 to 1 for alloy steel
- Other Features: All hooks are drilled for latch kits

Size No.	Self Colored		Carbon Steel Galvanized		Working Load Limit		Alloy Steel – Painted Orange		Working Load Limit		Weight Each	
	Cat. No.	UPC No. 020418	Cat. No.	UPC No. 020418	ton	kg	Cat. No.	UPC No. 020418	ton	kg	lb	kg
22	3914205	071379	3914235	071386	¾	680	3924215	071720	1	907	.54	.25
23	3914305	071393	3914335	071409	1	907	3924315	071737	1½	1361	.72	.33
24	3914405	071416	3914435	071423	1½	1361	3924415	071744	2	1814	1.04	.47
25	3914505	071430	3914535	071447	2	1814	3924515	071751	3	2722	1.45	.66
26	3914605	071454	3914635	071461	2½	2268	--	--	--	--	2.24	1.02
27	3914705	071478	3914735	071485	3	2722	3924715	071768	4½	4082	3.50	1.59
28	3914805	071492	--	--	4	3629	--	--	--	--	4.90	2.22
29	3914905	071515	--	--	5	4536	3924915	071775	7	6350	7.30	3.31
31	3915105	071553	--	--	7½	6804	3925115	071782	11	9979	12.00	5.45
32	3915205	071577	--	--	10	9072	3925215	071799	15	13608	17.60	7.99
34	--	--	--	--	--	--	3925415	071805	22	19958	35.10	15.94

Size No.	A	B	D	E	F	G	H	K	L	R	S											
	in.	mm	in.	mm	in.	mm	in.	mm	in.	mm	in.	mm										
22	1 1/16	43	15/16	24	2 31/32	75	1 1/32	26	29/32	23	25/32	20	29/32	23	9/16	14	4 7/16	113	3 9/32	83	3/8	10
23	1 13/16	46	15/16	24	3 3/16	81	1 1/16	27	31/32	25	27/32	21	31/32	25	5/8	16	4 21/32	118	3 3/8	86	7/16	11
24	2 1/8	54	1 1/8	29	3 9/16	90	1 1/8	29	1 1/32	26	1 1/32	26	1 1/8	29	1 1/16	17	5 9/32	134	3 3/4	95	1/2	13
25	2 3/8	60	1 1/4	32	4	102	1 1/4	32	1 1/8	29	1 5/32	29	1 5/16	33	13/16	21	5 7/8	149	4 5/32	106	9/16	14
26	2 1 1/16	68	1 3/8	35	4 1/2	114	1 13/32	36	1 7/8	31	1 5/16	33	1 1/2	38	15/16	24	6 1 1/16	170	4 23/32	120	2 1/32	17
27	2 15/16	75	1 9/16	40	4 15/16	125	1 17/32	39	1 5/16	33	1 7/16	37	1 5/8	41	1 1/16	27	7 25/32	198	5 21/32	144	1 1/16	17
28	3 1/8	79	1 17/32	39	5 27/32	148	1 5/32	45	1 1/2	38	1 5/8	41	1 15/16	49	1 3/16	30	8 5/8	219	6 3/16	157	13/16	21
29	3 3/4	95	2	51	6 15/32	164	1 15/16	49	1 21/32	42	1 13/16	46	2 1/8	54	1 11/32	34	9 7/8	251	7 3/16	183	7/8	22
31	4 1/4	108	1 25/32	45	7 3/16	183	2 1/8	54	1 7/8	48	2	51	2 3/8	60	1 1/2	38	10 1/2	267	7 1/2	191	1	25
32	4 7/8	124	2 13/32	61	8 9/16	217	2 9/16	65	2 1/8	54	2 9/16	65	2 15/16	75	1 13/16	46	13	330	9 3/16	233	1 1/4	32
34	6 3/8	162	3 5/32	80	11 7/16	291	3 7/16	87	3 5/32	80	3 7/32	82	3 25/32	96	2 7/32	56	16 29/32	429	12 1/16	306	1 5/8	41

#### ⚠ ADVERTENCIA

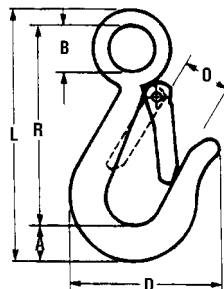
- Para prevenir la posibilidad de lesiones graves:
- **NO EXCEDA** el límite de carga de trabajo (WLL).
  - **NO LA UTILICE** choque o golpee la carga.
  - **NO USE** el accesorio si se ve deformado o desgastado.

#### ⚠ WARNING

- To prevent the possibility of serious bodily injury:
- **DO NOT EXCEED** the working load limit.
  - **DO NOT** shock or impact load.
  - **DO NOT USE** if the fitting is visibly distorted or worn.

## 478-G Snap Hooks

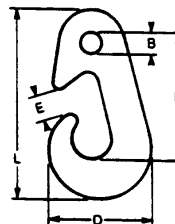
- Standard Material: Drop-forged carbon steel heat treated
- Standard Finish: Galvanized to ASTM A-153 specification
- Design Factor: 5 to 1



Hook Size A	Packed Each		Box of 10		Working Load Limit		Dimensions						Weight/100							
	in.	mm	Cat. No.	UPC No.	Cat. No.	UPC No.	lb	kg	B	D	L	O	R	lb	kg					
7/16	11	4530735	074196	020418	4530734	176722	750	340	3/4	19	2 7/16	62	4 1/16	103	2 1/32	17	3 1/4	83	28	12
9/16	14	4530935	074202	--	--	--	1000	454	1 1/8	29	2 31/32	75	5 1/32	128	1	25	4 1/2	102	45	20

## Cargo Hooks, 481-S, (Portland Pattern)

- Standard Material: Drop-forged carbon steel
- Standard Finish: Blue Paint Finish
- Design Factor: 5 to 1
- Other Features: Proof tested and certified

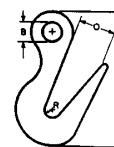


Size	Cat. No.	UPC No.	Working Load Limit		B		D		E		L		R		Weight Each	
			ton	kg	in.	mm	in.	mm	in.	mm	in.	mm	in.	mm	lb	kg
23	TF3899523	▽155963	10	9072	1 17/32	39	7	178	1 3/4	44	12 7/8	327	8 5/8	219	14.5	7

▽ These items are made to order.

## Sorting Hooks, 479-S

- Standard Material: Drop-forged alloy steel heat treated
- Standard Finish: Painted orange
- Design Factor: 5 to 1



Cat. No.	UPC No.	Working Load Limit			Dimensions						Weight/100				
		Tip	kg	Bottom	B	L	R	O	lb	kg					
3899500	070723	2	1814	7 1/2	6804	1 3/8	35	9 3/4	248	5/8	16	2 13/16	71	600	272

### ⚠ ADVERTENCIA

- Para prevenir la posibilidad de lesiones graves:
- **NO EXCEDA** el límite de carga de trabajo (WLL).
  - **NO LA UTILICE** choque o golpee la carga.
  - **NO USE** el accesorio si se ve deformado o desgastado.

### ⚠ WARNING

- To prevent the possibility of serious bodily injury:
- **DO NOT EXCEED** the working load limit.
  - **DO NOT** shock or impact load.
  - **DO NOT USE** if the fitting is visibly distorted or worn.

### Latch Kits For Hooks

916-G Campbell Latch Kit  
 916-U Universal Latch Kit

READ AND UNDERSTAND THESE WARNINGS AND INSTRUCTIONS BEFORE USING HOOK AND LATCH.



916-G LATCH KIT FOR CAMPBELL HOOK



916-U UNIVERSAL LATCH KIT – FOR ALL MAJOR HOOK BRANDS

#### IMPORTANT: Instructions For Use

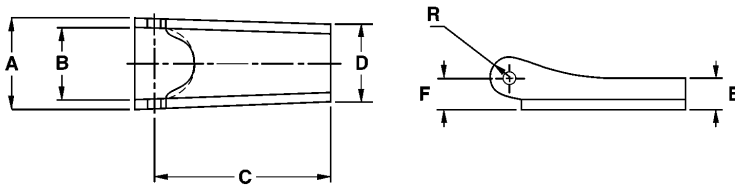
1. Always inspect the hook and latch before using.
2. Always make sure the spring forces the latch against the point of the hook.
3. Check the load before lifting to make sure the hook (not the latch) is supporting the load.
4. To assemble latches kit on hooks, follow instructions supplied with latch kit.

**⚠ WARNING**

- Failure to follow the Instructions For Use below and these warnings may cause death or serious injury.
- Loads may disengage from hook if proper procedures are not followed.
- A falling load may cause serious injury or death.
- The load must never be supported by the latch.
- Latches must always be inspected for wear or damage before use. If worn, distorted or damaged, discard and replace.
- Always stand clear of loads being lifted.

Campbell offers latches already assembled to the hook as well as kits for field installation.

- Universal kits fit Campbell as well as competitive hooks, including Crosby and Midland, that are drilled for latches
- Spring spacer adapts latch to hooks with narrow cam
- Bolt and nut permit fast, easy installation



Size		916-G kit		Universal kit		Dimensions										Weight/100	
in.	mm	Size No.	Cat. No.	UPC No. 020418	Cat. No.	UPC No. 020418	A in.	B in.	C in.	D in.	E in.	F in.	R in.	lb	kg		
1/4	6	2-22	3990101	072727	3991401	177088	23/32 18	9/16 14	1 1/4 32	5/8 16	1/4 6	1/4 6	5/32 4	3.3	1		
5/16	8	3-23	3990201	072734	3991402	177095	23/32 18	9/16 14	1 3/8 39	39/64 16	1/4 6	1/4 6	5/32 4	3.7	2		
--	--	4-24	3990301	072741	3991403	177101	15/16 24	25/32 20	1 17/32 43	15/16 24	9/32 7	9/32 7	3/16 5	5	2		
3/8	10	5-25	3990401	072758	3991404	177118	15/16 24	25/32 20	1 11/16 43	15/16 24	9/32 7	9/32 7	3/16 5	5.6	3		
--	--	6-26	3990501	072765	--	--	15/16 24	25/32 20	1 31/32 50	15/16 24	9/32 7	9/32 7	3/16 5	6.2	3		
--	--	7-27	3990601	072772	3991405	177125	15/16 24	25/32 20	1 7/8 48	15/16 24	9/32 7	9/32 7	3/16 5	6.5	3		
7/16	11	8-28	3990701	072789	--	--	1 9/32 32	1 25	2 3/8 60	1 9/32 32	3/8 10	9/16 14	17/64 7	12	5		
1/2	13	9-29	3990801	072796	3991406	177132	1 9/32 32	1 25	2 11/16 68	1 9/32 32	3/8 10	9/16 14	17/64 7	16.5	7		
--	--	10-30	3990901	072802	--	--	1 9/32 32	1 25	2 31/32 75	1 9/32 32	3/8 10	9/16 14	17/64 7	18.2	8		
5/8	16	11-31	3991001	072819	3991407	177149	1 9/32 32	1 25	3 7/32 82	1 9/32 32	3/8 10	9/16 14	17/64 7	36	16		
--	--	12-32	3991101	072826	3991408	177156	2 51	1 17/32 39	3 7/16 87	1 5/8 41	9/16 14	23/32 18	3/8 10	52	24		
--	--	34	--	--	3991409	177163	2 3/16 56	1 3/4 45	4 11/32 110	1 3/4 45	9/16 14	1 1/16 18	13/32 10	70.7	32		

**⚠ ADVERTENCIA**

Para prevenir la posibilidad de lesiones graves:

- **NO EXCEDA** el límite de carga de trabajo (WLL).
- **NO LA UTILICE** choque o golpee la carga.
- **NO USE** el accesorio si se ve deformado o desgastado.

**⚠ WARNING**

To prevent the possibility of serious bodily injury:

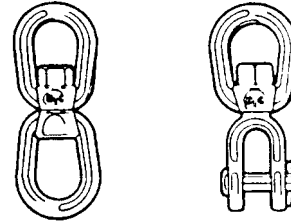
- **DO NOT EXCEED** the working load limit.
- **DO NOT** shock or impact load.
- **DO NOT USE** if the fitting is visibly distorted or worn.

272-G Eye & Eye  
275-G Jaw & Eye

READ AND UNDERSTAND THESE WARNINGS AND INSTRUCTIONS BEFORE USING SWIVELS.

**IMPORTANT: Instructions For Use**

1. These swivels are designed for a straight line pull only.
2. These swivels are *not* designed to swivel under load.
3. *Do not exceed working load limit (WLL).* See table below.



EYE AND EYE SWIVEL

JAW AND EYE SWIVEL

Working Load Limits - Swivels			
in.	Size	Carbon WLL	
	mm	lb	kg
1/4	6	850	386
5/16	8	1250	568
3/8	10	2250	1022
1/2	13	3600	1634
5/8	16	5200	2361
3/4	19	7200	3269
7/8	22	10,000	4540
1	25	12,500	5675
1 1/4	32	18,000	8172

**⚠ WARNING**

- Failure to follow the Instructions For Use below and these warnings may cause death or serious injury.
- Use swivels only as indicated.
- Swivels must always be inspected for wear, distortion and damage before use. If worn, distorted or damaged, discard and replace.
- Always stand clear of loads being lifted.
- Do not angle load.

Campbell carbon swivels are all drop-forged and normalized. They meet the design requirements of Federal Specification RR-C-271. Galvanizing is to ASTM A153 specification.

**⚠ ADVERTENCIA**

Para prevenir la posibilidad de lesiones graves:

- **NO EXCEDA** el límite de carga de trabajo (WLL).
- **NO LA UTILICE** choque o golpee la carga.
- **NO USE** el accesorio si se ve deformado o desgastado.

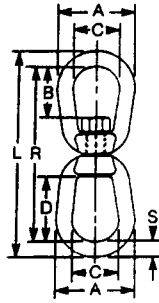
**⚠ WARNING**

To prevent the possibility of serious bodily injury:

- **DO NOT EXCEED** the working load limit.
- **DO NOT** shock or impact load.
- **DO NOT USE** if the fitting is visibly distorted or worn.



### 272-G, Eye & Eye Swivels Drop-Forged Carbon Steel



- Standard Material: Drop-forged carbon steel
- Standard Finish: Galvanized to ASTM A-153 specification
- Design Factor: 5 to 1
- Other Features: Meets Federal Specification RR-C-271 Type VII, Class 2

Size in. mm	Cat. No.	UPC No. 020418	Working Load Limit		Dimensions												Weight/ 100	
			lb	kg	A		B		C		D		L		R		lb	kg
1/4 6	3630435	069901	850	386	1 1/4 32	3/4 19	3/4 19	1 1/16 27	3 3/8 86	2 7/8 73	5 1/2 138	5 1/2 138	15.5	7.0				
5/16 8	3630535	069918	1250	567	1 5/8 41	3/4 19	1 25	1 1/4 32	4 1/8 105	3 5/8 92	6 1/2 162	6 1/2 162	28.5	12.9				
3/8 10	3630635	069925	2250	1021	2 51	1 25	1 1/4 32	1 1/2 38	6 3/4 171	5 3/4 146	9 1/2 238	9 1/2 238	59	26.8				
1/2 13	3630835	069932	3600	1633	2 1/2 64	1 1/4 32	1 1/2 38	1 15/16 49	8 3/4 217	7 3/4 196	12 1/2 315	12 1/2 315	124	56.3				
5/8 16	3631035	069949	5200	2359	3 76	1 5/8 41	1 3/4 44	2 3/8 60	10 8	203	18 3/4 466	18 3/4 466	238	108.1				
3/4 19	3631235	069956	7200	3266	3 1/2 89	1 3/4 44	2 51	2 1/2 64	12 8 3/4 222	11 1/4 284	17 1/2 438	17 1/2 438	365	165.7				
7/8 22	3631435	069963	10000	4536	4 102	2 1/8 54	2 1/4 57	3 1/16 78	13 10 3/8 264	12 3/4 322	20 1/2 518	20 1/2 518	568	257.9				
1 25	3631635	069970	12500	5670	4 1/2 114	2 1/4 57	2 1/2 64	3 1/2 89	14 11 3/4 298	13 3/4 348	23 1/2 596	23 1/2 596	891	404.5				
1 1/4 32	3632035	069987	18000	8165	5 5/8 143	3 1/4 83	3 1/8 79	3 7/8 98	15 13 15/16 354	14 1/2 368	25 1/2 648	25 1/2 648	1627	738.7				

#### ⚠ ADVERTENCIA

Para prevenir la posibilidad de lesiones graves:

- **NO EXCEDA** el límite de carga de trabajo (WLL).
- **NO LA UTILICE** choque o golpee la carga.
- **NO USE** el accesorio si se ve deformado o desgastado.

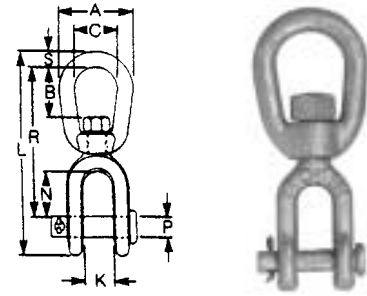
#### ⚠ WARNING

To prevent the possibility of serious bodily injury:

- **DO NOT EXCEED** the working load limit.
- **DO NOT** shock or impact load.
- **DO NOT USE** if the fitting is visibly distorted or worn.

## 275-G, Jaw & Eye Swivels Drop-Forged Carbon Steel - Galvanized

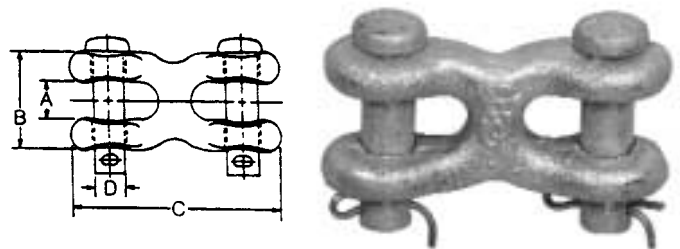
- Standard Material: Drop-forged carbon steel
- Standard Finish: Galvanized to ASTM A-153 specification
- Design Factor: 5 to 1
- Other Features: Meets Federal Specification RR-C-271 Type VII, Class 3



Size in. mm	Cat. No.	UPC No. 020418	Working Load Limit		Dimensions												Weight/ 100	
			lb	kg	A in. mm	B in. mm	C in. mm	K in. mm	L in. mm	N in. mm	P in. mm	R in. mm	lb	kg				
1/4 6	3640435	069994	850	386	1 1/4 32	3/4 19	3/4 19	1/2 13	3 5/32 80	3/4 19	1/4 6	2 7/16 62	21	10				
5/16 8	3640535	070006	1250	567	1 5/8 41	3/4 19	1 25	1/2 13	3 3/4 95	13/16 21	5/16 8	2 7/8 73	32	15				
3/8 10	3640635	070013	2250	1021	2 51	1 25	1 1/4 32	1 1/16 17	4 5/8 117	1 1/16 27	3/8 10	3 1/2 89	71	32				
1/2 13	3640835	070020	3600	1633	2 1/2 64	1 1/4 32	1 1/2 38	3/4 19	6 1/8 156	1 3/8 35	1/2 13	4 1 1/16 119	122	55				
5/8 16	3641035	070037	5200	2359	3 76	1 5/8 41	1 3/4 44	1 5/16 24	7 3/8 187	1 1/2 38	5/8 16	5 1/2 140	228	104				
3/4 19	3641235	070044	7200	3266	3 1/2 89	1 3/4 44	2 51	1 1/8 29	8 203	1 3/4 44	3/4 19	5 7/8 149	345	157				
7/8 22	3641435	070051	10000	4536	4 102	2 1/8 54	2 1/4 57	1 3/16 30	9 3/8 238	2 1/16 52	7/8 22	7 178	564	256				
1 25	3641635	070068	12500	5670	4 1/2 114	2 1/4 57	2 1/2 64	1 3/4 44	11 7/16 291	2 7/16 62	1 1/8 29	8 5/8 219	933	424				
1 1/4 32	3642035	070075	18000	8165	5 5/8 143	3 1/4 83	3 1/8 79	2 1/16 52	12 305	2 13/16 71	1 3/8 35	8 7/16 214	1651	750				

## Twin Clevis Link, 489-G Drop-forged Carbon Steel, Heat Treated

- Standard Material: Drop-forged carbon steel heat treated
- Standard Finish: Clevis and bolts are galvanized to ASTM A-153 specification cotter keys are stainless steel
- Design Factor: 3 to 1



Size		Cat. No.	UPC No. 020418	Working Load Limit		Dimensions								Pieces Per Box	Weight/ Box	
in.	mm			in.	mm	lb	kg	A in. mm	B in. mm	C in. mm	D in. mm	lb	kg			
1/4	7	5/16	8	3643300	175978	3900	1769	7/16 11	1 1/16 27	2 1/2 64	3/8 10	10	3.6	2		
3/8	10	-	-	3643301	175985	5400	2449	1/2 13	1 5/16 33	2 27/32 72	7/16 11	10	6.0	3		
7/16	11	1/2	13	3643302	175992	9200	4173	5/8 16	1 5/8 41	3 5/8 92	9/16 14	5	5.7	3		

### ⚠ ADVERTENCIA

- Para prevenir la posibilidad de lesiones graves:
- **NO EXCEDA** el límite de carga de trabajo (WLL).
  - **NO LA UTILICE** choque o golpee la carga.
  - **NO USE** el accesorio si se ve deformado o desgastado.

### ⚠ WARNING

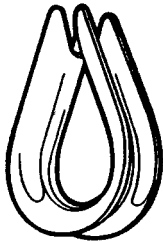
- To prevent the possibility of serious bodily injury:
- **DO NOT EXCEED** the working load limit.
  - **DO NOT** shock or impact load.
  - **DO NOT USE** if the fitting is visibly distorted or worn.

## Thimbles

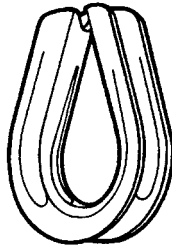
755-G Regular Wire Rope  
 765-G Heavy Wire Rope  
 83-G Manila Rope

Stainless Regular Wire Rope  
 Stainless Heavy Wire Rope

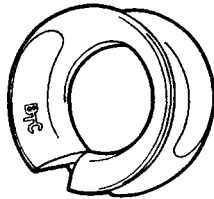
READ AND UNDERSTAND THESE WARNINGS AND INSTRUCTIONS BEFORE USING THIMBLES.



REGULAR  
WIRE ROPE  
THIMBLE



HEAVY  
WIRE ROPE  
THIMBLE



MANILA  
ROPE  
THIMBLE

Campbell® thimbles are all made of hot rolled, mild steel. They are all galvanized to ASTM A-153 Specification.

Campbell stainless regular thimbles are made of type 304 stainless steel, while the stainless heavy thimbles are made of type 316 stainless.

### IMPORTANT: Instructions For Use

1. A thimble is a wear pad that protects the rope from cuts and kinking. Always use an appropriate thimble when making an eye in a rope.
2. When it is necessary to open a thimble to insert a fitting, make sure the points are properly aligned when the thimble is closed. Inspect carefully for cracks.
3. *Thimbles are not designed for load carrying purposes; therefore working load limits have not been established.*

### ⚠ WARNING

- Failure to follow the Instructions For Use below and these warnings may cause death or serious injury.
- Thimbles must always be inspected for cracks and wear before use. If worn, distorted or damaged, discard and replace.
- Use thimbles only as indicated.
- The thimble size must exactly correspond to the diameter of the rope being used. Never use a smaller thimble, because it will pinch the rope and cause broken and/or displaced wires.

### ⚠ ADVERTENCIA

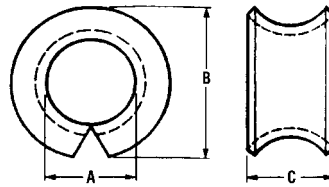
- Para prevenir la posibilidad de lesiones graves:
- **NO EXCEDA** el límite de carga de trabajo (WLL).
  - **NO LA UTILICE** choque o golpee la carga.
  - **NO USE** el accesorio si se ve deformado o desgastado.

### ⚠ WARNING

- To prevent the possibility of serious bodily injury:
- **DO NOT EXCEED** the working load limit.
  - **DO NOT** shock or impact load.
  - **DO NOT USE** if the fitting is visibly distorted or worn.

## Manila Rope Thimbles, 83-G Hot Rolled, Mild Steel

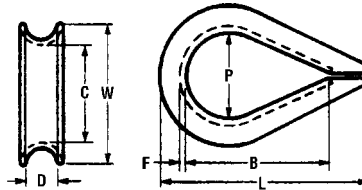
- Standard Material: Hot rolled, mild steel
- Standard Finish: Galvanized to ASTM A-153 specification
- Other Features: Meets design requirements of Federal Specifications FF-T-276B, Type 1



For Rope Dia.		Cat. No.	UPC No. 020418	Max. Pin Dia.		Dimensions						Weight/100	
in.	mm			in.	mm	A		B		C		lb	kg
3/8	10	6260301	091827	7/16	11	1/2	13	1	25	1/2	13	3	1
1/2	13	6260302	091834	11/16	17	3/4	19	1 5/16	33	23/32	18	8	4
5/8	16	6260303	091841	13/16	21	7/8	22	1 1/2	38	3/4	19	11	5
3/4	19	6260304	091858	1 1/16	27	1 1/8	29	1 13/16	46	31/32	25	16	7
7/8	22	6260305	091865	1 1/8	29	1 3/16	30	2	51	1 1/32	26	21	10
1	25	6260306	091872	1 3/16	30	1 1/4	32	2 1/4	57	1 3/16	30	25	11
1 1/8	29	6260307	091889	1 5/16	33	1 3/8	35	2 3/8	60	1 9/32	33	37	17

## Regular Wire Rope Thimbles, 755-G Hot Rolled, Mild Steel

- Standard Material: Hot rolled, mild steel
- Galvanized



For Rope Dia.			Cat. No.	UPC No. 020418	B		C		Dimensions			P (pin)		W		Weight/100					
in.	mm	in.			mm	in.	mm	in.	mm	in.	mm	in.	mm	in.	mm	in.	mm	lb	kg		
1/8	3	-	-	6260101	091568	1 9/32	33	1 1/16	17	5/32	4	3/64	1	1 3/4	44	1 1/16	17	1 1/8	29	3	1
3/16	5	-	-	6260102	091575	1 9/32	33	1 1/16	17	7/32	6	3/64	1	1 3/4	44	1 1/16	17	1 1/8	29	3	1
1/4	6	-	-	6260103	091582	1 11/32	34	1 1/16	17	5/16	8	3/64	1	1 7/8	48	1 1/16	17	1 1/8	29	5	2
5/16	8	-	-	6260104	091599	1 17/32	39	1 5/16	21	11/32	9	3/64	1	2 1/8	54	1 3/16	21	1 1/4	32	5	2
3/8	10	-	-	6260105	091605	1 21/32	42	1 5/16	24	7/16	11	1/16	2	2 1/4	57	1 5/16	24	1 1/2	38	10	5
7/16	11	-	-	6260106	091612	1 15/16	49	1 1/8	29	15/32	12	1/16	2	2 3/4	70	1 1/8	29	1 3/4	44	15	7
1/2	13	-	-	6260107	091629	1 15/16	49	1 5/32	29	9/16	14	1/16	2	2 5/8	67	1 1/8	29	1 13/16	46	15	7
9/16	14	5/8	16	6260108	091636	2 5/8	67	1 1/2	38	5/8	16	1/8	3	3 3/4	95	1 7/16	37	2 5/16	59	32	15
3/4	19	-	-	6260109	091643	2 7/8	73	1 5/8	41	25/32	20	9/64	4	4 3/16	106	1 9/16	40	2 1/2	64	40	18
7/8	22	-	-	6260110	091650	3 1/16	78	1 3/4	44	29/32	23	9/64	4	4 1/2	114	1 5/8	41	2 23/32	69	54	25
1	25	-	-	6260111	091667	4 1/16	103	2 3/8	60	1 1/16	27	11/64	4	5 3/4	146	2 1/4	57	3 1/2	89	105	48
1 1/8	29	-	-	6260112	091674	4 5/8	117	2 5/8	67	1 3/16	30	3/16	5	6 1/2	165	2 1/2	64	4	102	140	64
1 1/4	32	-	-	6260113	091681	4 1/2	114	2 3/4	70	1 5/16	33	3/16	5	6 3/4	171	2 5/8	67	4 1/8	105	165	75
1 1/2	38	-	-	6260114	091698	5 5/16	135	3 1/4	83	1 5/8	41	3/16	5	7 7/8	200	3 1/8	79	5 1/8	130	245	111

### ⚠ ADVERTENCIA

- Para prevenir la posibilidad de lesiones graves:
- **NO EXCEDA** el límite de carga de trabajo (WLL).
  - **NO LA UTILICE** choque o golpee la carga.
  - **NO USE** el accesorio si se ve deformado o desgastado.

### ⚠ WARNING

- To prevent the possibility of serious bodily injury:
- **DO NOT EXCEED** the working load limit.
  - **DO NOT** shock or impact load.
  - **DO NOT USE** if the fitting is visibly distorted or worn.

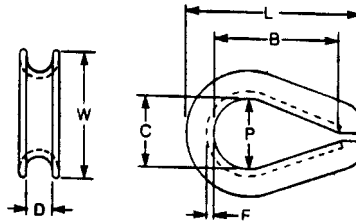
### Regular Wire Rope Thimbles, Type 304 Stainless Steel



- Standard Material: Forged Type 304 Stainless Steel
- Standard Finish: Electro-polish

For Rope Dia.		Cat. No.	UPC No. 020418	Thickness	Overall		Length	Inside Width		Weight/100	
in.	mm				in.	mm		in.	mm	in.	mm
1/8	3	6407502	095375	9/32	7	1 3/4	44	23/32	18	3	1
3/16	5	6407503	095382	11/32	9	1 3/4	44	23/32	18	3	1
1/4	6	6407504	095399	3/8	10	1 7/8	48	23/32	18	5	2
5/16	8	6407505	095405	7/16	11	2 3/32	53	27/32	21	5	2
3/8	9	6407506	095412	9/16	14	2 1/4	57	31/32	25	8	4
1/2	12	6407508	095429	21/32	17	2 1/2	64	1 5/32	29	14	6

### Heavy Wire Rope Thimbles, 765-G Hot Rolled, Mild Steel



- Standard Material: Hot rolled, mild steel
- Galvanized

For Rope Dia.				Cat. No.	UPC No. 020418	Dimensions												Weight/100			
in.	mm	- in.	mm			B	C	D	F	L	P (pin)	W	lb	kg							
1/4	6	-	-	6260201	091711	1 5/8	41	7/8	22	9/32	7	1/16	2	2 1/8	54	13/16	21	1 1/2	38	7	3
5/16	8	-	-	6260202	091728	1 7/8	48	1 1/16	27	3/8	10	5/64	2	2 1/2	64	15/16	24	1 13/16	46	12	5
3/8	10	-	-	6260203	091735	2 1/8	54	1 1/8	29	7/16	11	7/64	3	3	76	1 1/16	27	2 1/8	54	23	10
7/16	11	-	-	6260204	091742	2 1/4	57	1 1/4	32	1/2	13	1/8	3	3 1/16	78	1 3/16	30	2 3/8	60	27	12
1/2	13	9/16	14	6260205	091759	2 3/4	70	1 1/2	38	5/8	16	9/64	4	3 5/8	92	1 7/16	37	2 11/16	68	49	22
5/8	16	-	-	6260206	091766	3 1/4	83	1 3/4	44	1 1/16	17	5/32	4	4 1/4	108	1 5/8	41	3 1/8	79	72	33
3/4	19	-	-	6260207	091773	3 3/4	95	2	51	13/16	21	7/32	6	5	127	1 7/8	48	3 13/16	97	141	64
7/8	22	-	-	6260208	091780	4 1/4	108	2 1/4	57	15/16	24	7/32	6	5 1/2	140	2 1/8	54	4 1/4	108	185	84
1	25	-	-	6260209	091797	4 1/2	114	2 1/2	64	1 1/16	27	1/4	6	6 1/8	156	2 3/8	60	4 15/16	125	300	136
1 1/8	29	1 1/4	29	6260210	091803	5 1/8	130	2 7/8	73	1 5/16	33	1/4	6	7	178	2 3/4	70	5 7/8	149	368	167
1 3/8	35	1 1/2	38	6260211	091810	6 1/4	159	3 1/2	89	1 9/16	40	1/2	13	9	229	3 3/8	86	7 1/8	181	1214551	

#### ⚠ ADVERTENCIA

- Para prevenir la posibilidad de lesiones graves:
- **NO EXCEDA** el límite de carga de trabajo (WLL).
  - **NO LA UTILICE** choque o golpee la carga.
  - **NO USE** el accesorio si se ve deformado o desgastado.

#### ⚠ WARNING

- To prevent the possibility of serious bodily injury:
- **DO NOT EXCEED** the working load limit.
  - **DO NOT** shock or impact load.
  - **DO NOT USE** if the fitting is visibly distorted or worn.

# Heavy Wire Rope Thimbles, Type 316 Stainless Steel

- Standard Material: Type 316 Stainless Steel
- Standard Finish: Electro-polish

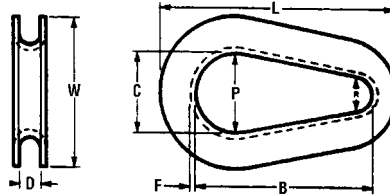


For Rope Dia.		Cat. No.	UPC No. 020418	Thickness in.	Overall		Length		Inside Width		Weight/100	
in.	mm				mm	in.	mm	in.	mm	in.	mm	lb
1/4	6	6407604	095436	13/32	10	2 3/16	56	7/8	22	7.5	3	
5/16	8	6407605	095443	1/2	13	2 1/2	64	1 1/16	27	14	6	
3/8	9	6407606	095450	21/32	17	2 7/8	73	1 1/8	29	25	11	
1/2	12	6407608	095467	27/32	21	3 5/8	92	1 1/2	38	51	23	
5/8	15	6407610	095474	1	25	4 1/4	108	1 3/4	44	75	34	
3/4	19	6407612	095481	1 1/4	32	5	127	2	51	147	67	

**Note:** Thimbles are not designed for load carrying purposes; therefore, working load limits have not been established.

# Slip-Thru Thimbles, 745-S Hot Rolled, Mild Steel

- Standard Material: Hot rolled, mild steel
- Standard Finish: Painted blue



Size No.	For Rope Diameter			Cat. No.	UPC No. 020418	Weight/100		
	in.	mm	in.			mm	lb	kg
2	5/16	8	3/8	10	6265401	092169	50	23
3	7/16	11	1/2-9/16	13-14	6265402	092176	125	57
4	5/8	16	3/4	19	6265403	092183	235	107
4-Spec	5/8	16	3/4	19	6265404	092190	295	134

Style	B		C		D		F		L		P (max pin dia.)		R		W	
	in.	mm	in.	mm	in.	mm	in.	mm	in.	mm	in.	mm	in.	mm	in.	mm
2	3 7/8	98	1 3/4	44	1/2	13	7/64	3	5 1/8	130	1 11/16	43	3/4	19	3 1/4	83
3	4 7/8	124	2 1/4	57	1 1/16	17	5/32	4	6 1/2	165	2 3/16	56	1	25	4 1/2	114
4	5 7/8	149	2 9/16	65	1 3/16	21	11/64	4	8 3/16	208	2 1/2	64	1 3/16	30	5 1/8	130
4-Spec	7 5/8	194	3 5/8	92	1 3/16	21	3/16	5	9 15/16	252	3 9/16	90	1 3/16	30	6 3/8	162

## ⚠ ADVERTENCIA

Para prevenir la posibilidad de lesiones graves:

- **NO EXCEDA** el límite de carga de trabajo (WLL).
- **NO LA UTILICE** choque o golpee la carga.
- **NO USE** el accesorio si se ve deformado o desgastado.

## ⚠ WARNING

To prevent the possibility of serious bodily injury:

- **DO NOT EXCEED** the working load limit.
- **DO NOT** shock or impact load.
- **DO NOT USE** if the fitting is visibly distorted or worn.

## 821-S, G, A Weldless Sling Links

READ AND UNDERSTAND THESE WARNINGS AND INSTRUCTIONS BEFORE USING THESE LINKS.



SLING LINK

### IMPORTANT: Instructions For Use

1. Make sure the link has a working load limit compatible with that of the chain or wire rope with which it is used.
2. Do not exceed WLL. See table below.
3. The WLL can be significantly reduced under the following conditions:

Wear and/or Distortion  
Extreme Heat  
Weld Spatter

If link is exposed to any of these conditions, discard it.

### WARNING

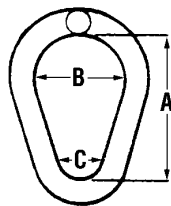
- Failure to follow the Instructions For Use below and these warnings may cause death or serious injury.
- Use links only as indicated.
- Links must always be inspected for wear and distortion before use. If worn, distorted or damaged, discard and replace.
- Do not weld on these links.
- Always stand clear of loads being lifted.

Campbell® links are all drop-forged and heat treated. Galvanizing is to ASTM A-153 specification.

### Working Load Limits (lb and kg) - Links

Size		Carbon WLL		Alloy WLL	
in.	mm	lb	kg	lb	kg
3/8	10	1600	726	2600	1180
1/2	13	2900	1317	4000	1816
5/8	16	4200	1907	5800	2633
3/4	19	6000	2724	8200	3723
7/8	22	8300	3768	--	--
1	25	10800	4903	--	--

## 821-S, 821-G, 821-A Weldless Sling Links



- Standard Material: Drop-forged steel, heat treated
- Design Factor: 6 to 1

### Carbon Steel, Heat Treated

Size		Blue Painted		Galvanized		Working Load Limit		Dimensions						Weight Each	
in.	mm	Cat. No.	UPC No. 020418	Cat. No.	UPC No. 020418	lb	kg	A in.	A mm	B in.	B mm	C in.	C mm	lb	kg
3/8	10	3625115	069703	3625135	069710	1600	726	2 1/4	57	1 1/2	38	3/4	19	.3	.14
1/2	13	3625215	069727	3625235	069734	2900	1315	3	76	2	51	1	25	.6	.27
5/8	16	3625315	069741	3625335	069758	4200	1905	3 3/4	95	2 1/2	64	1 1/4	32	1.1	.50
3/4	19	3625415	069765	3625435	069772	6000	2722	4 1/2	114	3	76	1 1/2	38	1.9	.86
7/8	22	3625515	069789	3625535	069796	8300	3765	5 1/4	133	3 1/2	89	1 3/4	44	2.9	1.32
1	25	3625615	069802	3625635	069819	10800	4899	6	152	4	102	2	51	4.4	2.00

### ADVERTENCIA

Para prevenir la posibilidad de lesiones graves:

- NO EXCEDA el límite de carga de trabajo (WLL).
- NO LA UTILICE choque o golpee la carga.
- NO USE el accesorio si se ve deformado o desgastado.

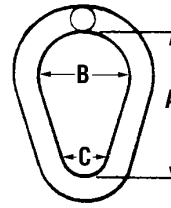
### WARNING

To prevent the possibility of serious bodily injury:

- DO NOT EXCEED the working load limit.
- DO NOT shock or impact load.
- DO NOT USE if the fitting is visibly distorted or worn.

## 821-S, 821-G, 821-A Weldless Sling Links, continued

- Standard Material: Drop-forged steel, heat treated
- Design Factor: 6 to 1



### Alloy, Orange Painted

Size	Blue Painted		Galvanized		Working Load Limit		Dimensions						Weight Each		
	Cat. No.	UPC No. 020418	Cat. No.	UPC No. 020418	lb	kg	A		B		C		lb	kg	
in.	mm						in.	mm	in.	mm	in.	mm			
3/8	10	3626115	069826	3625135	069710	1600	726	2 1/4	57	1 1/2	38	3/4	19	.3	.14
1/2	13	3626215	069833	3625235	069734	2900	1315	3	76	2	51	1	25	.6	.27
5/8	16	3626315	069840	3625335	069758	4200	1905	3 3/4	95	2 1/2	64	1 1/4	32	1.1	.50
3/4	19	3626415	069857	3625435	069772	6000	2722	4 1/2	114	3	76	1 1/2	38	1.9	.86

### ⚠ ADVERTENCIA

Para prevenir la posibilidad de lesiones graves:

- **NO EXCEDA** el límite de carga de trabajo (WLL).
- **NO LA UTILICE** choque o golpee la carga.
- **NO USE** el accesorio si se ve deformado o desgastado.

### ⚠ WARNING

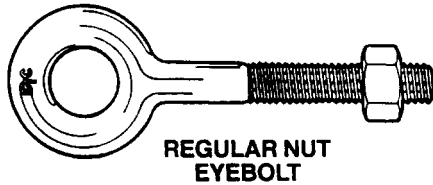
To prevent the possibility of serious bodily injury:

- **DO NOT EXCEED** the working load limit.
- **DO NOT** shock or impact load.
- **DO NOT USE** if the fitting is visibly distorted or worn.

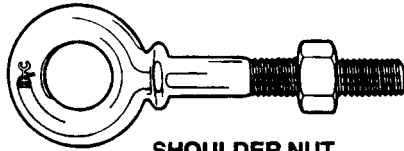


### Eyebolts, 436-G Regular Nut, 444-G Shoulder Nut

READ AND UNDERSTAND THESE WARNINGS AND INSTRUCTIONS AND FOLLOW ALL EYEBOLT SAFETY INFORMATION PRESENTED HERE BEFORE USING EYEBOLT ASSEMBLIES.



REGULAR NUT EYEBOLT



SHOULDER NUT EYEBOLT

Campbell carbon steel eyebolts are all drop-forged and normalized. Galvanizing is to ASTM A-153 specification.

#### IMPORTANT: Instructions For Use

1. Make sure the eyebolt is properly seated by screwing it down completely and tightening the nut securely against the load.
2. An eyebolt must be installed into a tapped hole with a minimum depth of two times the shank diameter.
3. Make sure the threads on the shank and in the hole are clean and undamaged.
4. Loads must always be applied parallel to the plane of the eye and never across the plane of the eye.

**⚠ WARNING**

- Failure to follow the Instructions For Use below and these warnings may cause death or serious injury.
- Loads may slip or fail if proper eyebolt assembly and lifting procedures are not used.
- A falling load can seriously injure or kill.
- Eyebolts must always be inspected for wear and distortion before use. If worn, distorted or damaged, discard and replace.
- Do not use regular nut eyebolts for angular lifting.
- Never machine, cut or grind an eyebolt.
- Always stand clear of loads being lifted.

5. Always lift the load with a steady, even pull. Do not shock load.
6. Do not exceed working load limit (WLL). See table below. The standard WLL's are established for a vertical pull. When the load is pulled at an angle, the WLL is reduced as shown in the table below.
7. When using lifting slings having two or more legs, make sure the load on each leg is calculated based on the angular loading. The shoulder nut eyebolt with the correct WLL under those conditions must be used.
8. Use only the heavy hex nuts supplied with the eyebolts.

#### Effect of Angular Loading on WLL of Carbon Steel, Shoulder Nut Eyebolts

Shank Diameter	Vertical Pull WLL		75° Pull WLL		60° Pull WLL		45° Pull WLL		Less than 45° Pull
	in.	mm	lb	kg	lb	kg	lb	kg	
1/4	6	500	227	300	136	190	86	135	61
5/16	8	850	386	465	211	295	134	210	95
3/8	10	1250	568	685	311	435	197	310	141
1/2	13	2250	568	1235	561	785	356	560	254
5/8	16	3600	1634	1980	899	1260	572	900	409
3/4	19	5200	2361	2860	1298	1820	826	1300	590
7/8	22	7200	3269	3960	1798	2520	1144	1800	817
1	25	10000	4540	5500	2497	3500	1589	2500	1135

#### Effect of Angular Loading on WLL of Stainless Steel, Shoulder Nut Eyebolts

Shank Diameter	Vertical Pull WLL		75° Pull WLL		60° Pull WLL		45° Pull WLL		Less than 45° Pull
	in.	mm	lb	kg	lb	kg	lb	kg	
1/4	6	500	227	300	136	190	86	135	61
5/16	8	780	354	425	193	270	123	195	89
3/8	10	1160	527	635	288	405	184	290	132
1/2	13	2150	976	1180	536	750	341	535	243
5/8	16	3440	1562	1890	858	1200	545	860	390
3/4	19	5140	2334	2825	1283	1795	815	1285	583
7/8	22	7130	3237	3920	1780	2495	1133	1780	808
1	25	9370	4254	5150	2338	3275	1487	2340	1062

**⚠ ADVERTENCIA**

Para prevenir la posibilidad de lesiones graves:

- **NO EXCEDA** el límite de carga de trabajo (WLL).
- **NO LA UTILICE** choque o golpee la carga.
- **NO USE** el accesorio si se ve deformado o desgastado.

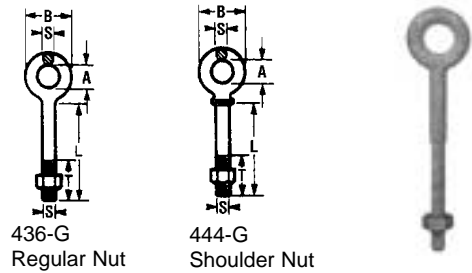
**⚠ WARNING**

To prevent the possibility of serious bodily injury:

- **DO NOT EXCEED** the working load limit.
- **DO NOT** shock or impact load.
- **DO NOT USE** if the fitting is visibly distorted or worn.

# 436-G, 444G Nut Eyebolts, Galvanized

- Standard Material: Drop-forged carbon steel
- Working load limits apply only to eyebolts in lifting or pulling applications
- Galvanizing to ASTM A-153 specification
- Note: If angular loading is necessary, eyebolts are to be used at reduced loads (see illustration)



Shank Dimensions				Regular		Shoulder		Working Load Limit		Dimensions			Weight/100				
Dia.	Length		Cat. No.	UPC No. 020418	Cat. No.	UPC No. 020418	lb	kg	A			T		lb	kg		
	in.	mm							in.	mm	in.	mm	in.			mm	
1/4	6	2	51	7150101	100734	7150201	101045	550	249	1/2	13	1	25	1 1/2	38	8 7/8	4
1/4	6	4	102	7150102	100741	7150202	101052	550	249	1/2	13	1	25	2 1/2	64	11 1/2	5
5/16	8	2 1/4	57	7150103	100758	7150203	101069	850	386	5/8	16	1 1/4	32	1 1/2	38	15 5/8	7
5/16	8	4 1/4	108	7150104	100765	7150204	101076	850	386	5/8	16	1 1/4	32	2 1/2	64	16 3/4	8
3/8	10	2 1/2	64	7150105	100772	7150205	101083	1250	567	3/4	19	1 1/2	38	1 1/2	38	23 1/2	11
3/8	10	4 1/2	114	7150106	100789	7150206	101090	1250	567	3/4	19	1 1/2	38	2 1/2	64	27 1/2	12
3/8	10	6	152	7150107	100796	--	--	1250	567	3/4	19	1 1/2	38	3	76	32	15
1/2	13	3 1/4	83	7150108	100802	7150208	101106	2250	1021	1	25	2	51	1 1/2	38	54	25
1/2	13	6	152	7150109	100819	7150209	101113	2250	1021	1	25	2	51	3	76	68 3/4	31
1/2	13	8	203	7150110	100826	--	--	2250	1021	1	25	2	51	3	76	78	35
1/2	13	10	254	7150111	100833	--	--	2250	1021	1	25	2	51	3	76	88	40
1/2	13	12	305	7150112	100840	--	--	2250	1021	1	25	2	51	4	102	100	45
5/8	16	4	102	7150113	100857	7150213	101137	3600	1633	1 1/4	32	2 1/2	64	2	51	104	47
5/8	16	6	152	7150114	100864	7150214	101144	3600	1633	1 1/4	32	2 1/2	64	3	76	120	54
5/8	16	8	203	7150115	100871	--	--	3600	1633	1 1/4	32	2 1/2	64	3	76	131	59
5/8	16	10	254	7150116	100888	--	--	3600	1633	1 1/4	32	2 1/2	64	3	76	152	69
5/8	16	12	305	7150117	100895	--	--	3600	1633	1 1/4	32	2 1/2	64	4	102	168	76
3/4	19	4 1/2	114	7150118	100901	7150218	101168	5200	2359	1 1/2	38	3	76	2	51	165	75
3/4	19	6	152	7150119	100918	7150219	101175	5200	2359	1 1/2	38	3	76	3	76	190	86
3/4	19	8	203	7150120	100925	--	--	5200	2359	1 1/2	38	3	76	3	76	208	94
3/4	19	10	254	7150121	100932	--	--	5200	2359	1 1/2	38	3	76	3	76	230	104
3/4	19	12	305	7150122	100949	--	--	5200	2359	1 1/2	38	3	76	4	102	255	116
3/4	19	15	381	7150123	100956	--	--	5200	2359	1 1/2	38	3	76	5	127	290	132
7/8	22	5	127	--	--	7150224	101182	7200	3266	3/4	44	3 1/2	89	2 1/2	64	252	114
7/8	22	8	203	--	--	7150225	101199	7200	3266	3/4	44	3 1/2	89	4	102	290	132
7/8	22	12	305	--	--	--	--	7200	3266	3/4	44	3 1/2	89	4	102	340	154
7/8	22	18	457	--	--	--	--	7200	3266	3/4	44	3 1/2	89	7	178	440	200
1	25	6	152	7150128	101007	7150228	101205	10000	4536	2	51	4	102	3	76	390	177
1	25	9	229	7150129	101014	7150229	101212	10000	4536	2	51	4	102	4	102	470	213
1	25	12	305	7150130	101021	--	--	10000	4536	2	51	4	102	4	102	520	236
1	25	18	457	7150131	101038	--	--	10000	4536	2	51	4	102	7	178	650	295
1 1/4	32	8	203	--	--	7150231	181191	15000	6805	2 1/2	64	5	127	4	102	750	341
1 1/4	32	12	305	--	--	7150290	181207	15000	6805	2 1/2	64	5	127	4	102	900	409

∇These items are made to order.

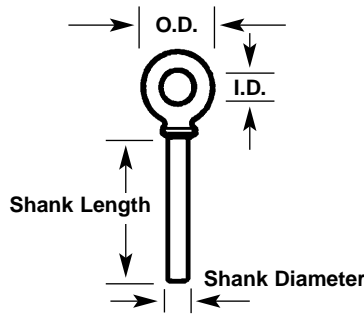
**ADVERTENCIA**

- Para prevenir la posibilidad de lesiones graves:
- **NO EXCEDA** el límite de carga de trabajo (WLL).
  - **NO LA UTILICE** choque o golpee la carga.
  - **NO USE** el accesorio si se ve deformado o desgastado.

**WARNING**

- To prevent the possibility of serious bodily injury:
- **DO NOT EXCEED** the working load limit.
  - **DO NOT** shock or impact load.
  - **DO NOT USE** if the fitting is visibly distorted or worn.

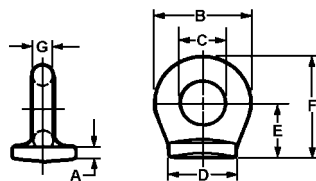
### Nut Eyebolts, Drop-Forged, Type 316 Stainless Steel



- Regular and shoulder eyebolts
- Non-magnetic
- All have UNC-2, right hand thread
- Standard Material: Forged Type 316 Stainless Steel
- Standard Finish: Electro-polish

Shank Dimensions				Regular		Shoulder		Working Load Limit		Dimensions											
Dia.	Length		Cat. No.	UPC No.	Cat. No.	UPC No.	lb	kg	Regular		Shoulder		Thread Length		Weight/100						
in.	mm	in.	mm	020418	020418	020418			I.D.	O.D.	I.D.	O.D.	in.	mm	in.	mm	lb	kg			
1/4	6	2	51	6405101	094712	--	--	500	227	1/2	13	1	25	1/2	13	7/8	22	1 1/2	38	8 7/8	4
1/4	6	4	102	6405102	094729	6405002	094606	500	227	1/2	13	1	25	1/2	13	7/8	22	2 1/2	64	12	5
5/16	8	2 1/4	57	--	--	6405003	094613	780	354	5/8	16	1 1/8	29	5/8	16	1 1/8	29	1 1/2	38	16	7
5/16	8	4 1/4	108	6405104	094743	6405004	094620	780	354	5/8	16	1 1/8	29	5/8	16	1 1/8	29	2 1/2	64	17	8
3/8	9	2 1/2	64	6405105	094750	6405005	094637	1,160	526	3/4	19	1 1/2	38	3/4	19	1 3/8	35	1 1/2	38	24	11
3/8	9	4 1/2	114	6405106	094767	6405006	094644	1,160	526	3/4	19	1 1/2	38	3/4	19	1 3/8	35	2 1/2	64	30	14
1/2	13	3 1/4	83	6405107	094774	6405007	094651	2,150	975	1	25	2	51	1	25	1 3/4	44	1 1/2	38	54	25
1/2	13	6	152	6405108	094781	6405008	094668	2,150	975	1	25	2	51	1	25	1 3/4	44	3	75	69	31
5/8	16	4	102	6405109	094798	6405009	094675	3,440	1,560	1 1/4	32	2 1/2	64	1 1/4	32	2 1/4	57	2	51	104	47
3/4	19	4 1/2	114	6405111	094804	6405011	094682	5,140	2,332	1 1/2	38	2 7/8	73	1 1/2	38	2 3/4	70	2	51	165	75
7/8	22	5	127	6405113	094811	6405013	094699	7,130	3,234	1 3/4	44	3 3/8	86	1 3/4	44	3 1/4	83	2 1/2	64	260	118
1	25	6	152	6405115	094828	6405015	094705	9,370	4,250	2	51	4	102	2	51	3 3/4	95	3	75	390	177

### 20-S, Pad Eyes, Carbon Steel



- Uses: Widely used on farm machinery, trucks, steel hulled marine vessels and material handling equipment
- Standard Material: Drop-forged C-1038 carbon steel
- Standard Finish: Self-colored

Size		Cat. No.	UPC No.	Dimensions														Weight/100	
in.	mm		020418	A		B		C		D		E		F		G		lb	kg
				in.	mm	in.	mm	in.	mm	in.	mm	in.	mm	in.	mm	in.	mm		
1 1/2	38	7105301	100697	5/32	4	1 1/8	29	5/8	16	1	25	3/4	19	1 5/16	33	1/4	6	8	4
2	51	7105302	100703	3/16	5	1 1/2	38	3/4	19	1 1/16	27	7/8	22	1 5/8	41	3/8	10	17	8
4	102	7105303	100710	1/4	6	2 1/8	54	1	25	1 7/16	37	1 1/4	32	2 5/16	59	9/16	14	50	23
5	127	7105304	100727	15/16	24	2 5/8	67	1 1/4	32	1 3/4	44	1 9/16	40	2 7/8	73	1 1/16	17	93	42

#### ⚠ ADVERTENCIA

- Para prevenir la posibilidad de lesiones graves:
- **NO EXCEDA** el límite de carga de trabajo (WLL).
  - **NO LA UTILICE** choque o golpee la carga.
  - **NO USE** el accesorio si se ve deformado o desgastado.

#### ⚠ WARNING

- To prevent the possibility of serious bodily injury:
- **DO NOT EXCEED** the working load limit.
  - **DO NOT** shock or impact load.
  - **DO NOT USE** if the fitting is visibly distorted or worn.

# Lifting Eyes & Eye Nuts

READ AND UNDERSTAND THESE WARNINGS AND INSTRUCTIONS BEFORE USING LIFTING EYES AND NUTS.

## ⚠ WARNING

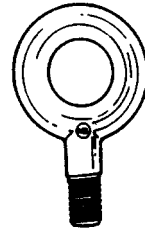
- Failure to follow the Instructions For Use below and these warnings may cause death or serious injury.
- Loads may slip or fail if proper assembly and lifting procedures are not used.
- Use lifting eyes and eye nuts only as indicated.
- Lifting eyes and eye nuts must always be inspected for wear, distortion and damage before use. If worn, distorted or damaged, discard and replace.
- Always stand clear of loads being lifted.

### WLL (Lb and kg) of Carbon Eye Nuts

Size No.	Eye Nut Tap Size		Vertical Pull WLL		75° Pull WLL		60° Pull WLL		45° Pull WLL		Less Than 45° Pull
	in.	mm	lb	kg	lb	kg	lb	kg	lb	kg	
1, 1A	5/16	8	850	386	465	211	295	134	210	95	
2	3/8	10	1250	567	685	311	435	197	310	141	
3	7/16	11	1650	748	905	411	575	261	410	186	
3, 3A	1/2	13	2250	1021	1235	561	785	356	560	254	NOT RECOMMENDED
6	7/8	22	7200	3266	3960	1798	2520	1144	1800	817	
8	1 1/4	32	15200	6895	8360	3795	5320	2415	3800	1725	
10	1 1/2	38	21400	9707	11770	5344	7490	3400	5350	2429	

### WLL (Lb and kg) of Stainless Steel Lifting Eyes

Size No.	Eye Nut Tap Size		Vertical Pull WLL		75° Pull WLL		60° Pull WLL		45° Pull WLL		Less Than 45° Pull
	in.	mm	lb	kg	lb	kg	lb	kg	lb	kg	
5	1/2	13	2150	976	1180	536	750	341	535	243	
6	5/8	16	3440	1562	1890	858	1200	545	860	390	NOT RECOMMENDED
7	3/4	19	5140	2334	2825	1283	1795	815	1285	583	
9	1	25	9370	4254	5150	2338	3275	1487	2340	1062	



STAINLESS LIFTING EYE



EYE NUT

Campbell carbon eye nuts are all drop-forged and normalized. Galvanizing is to ASTM A-153 specification.

### IMPORTANT: Instructions For Use

1. Do not exceed working load limit (WLL) as shown in the table below. The standard WLL's are established for a vertical pull. The WLL is significantly reduced when angular loading is involved as shown in the table below.
2. When using lifting slings having two or more legs, make sure the load on each leg is calculated based on the angular loading. The eye nut with the correct WLL under those conditions must be used.
3. Make sure the eye nuts are properly seated by screwing them down completely.
4. Make sure the threads in the hole are clean and undamaged.
5. Loads must always be applied parallel to the plane of the eye and never across the plane.
6. Always stand clear of the load and lift the load with a steady, even pull. Do not shock load.

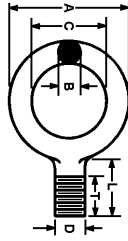
## ⚠ ADVERTENCIA

- Para prevenir la posibilidad de lesiones graves:
- **NO EXCEDA** el límite de carga de trabajo (WLL).
  - **NO LA UTILICE** choque o golpee la carga.
  - **NO USE** el accesorio si se ve deformado o desgastado.

## ⚠ WARNING

- To prevent the possibility of serious bodily injury:
- **DO NOT EXCEED** the working load limit.
  - **DO NOT** shock or impact load.
  - **DO NOT USE** if the fitting is visibly distorted or worn.

### Lifting Eyes, M-41-ST Drop-forged Type 316 Stainless Steel

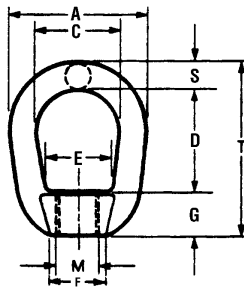


- Standard Material: Forged Type 316 Stainless Steel
- Standard Finish: Electro-polish

Size No.	Cat. No.	UPC No. 020418	Working Load Limit		Weight Each	
			lb	kg	lb	kg
5	6407104	095320	2150	975	.25	.11
6	6407105	095337	3440	1560	.66	.30
7	6407106	095344	5140	2332	.86	.39
9	6407107	095351	9370	4250	1.82	.83

Size No.	D		L		A		C		B		T	
	in.	mm	in.	mm	in.	mm	in.	mm	in.	mm	in.	mm
5	1/2	13	3/4	19	2	50	1	25	1/2	13	5/8	16
6	5/8	16	1	25	2 1/2	64	1 1/4	32	5/8	16	3/4	19
7	3/4	19	1	25	2 13/16	71	1 1/2	38	2 1/32	17	7/8	22
9	1	25	1 7/16	37	3 9/16	90	1 13/16	46	7/8	22	1 1/16	27

### Eye Nuts, 776-G Drop-forged Carbon Steel, Normalized



- Standard Material: Drop-forged carbon steel normalized
- Standard Finish: Galvanized to ASTM A-153 specification
- Design Factor: 5 to 1

Size No.	Cat. No.	UPC No. 020418	Working Load Limit		Tap Size M UNC-2B		Weight/100	
			lb	kg	in.	mm	lb	kg
1A	7100102	100413	850	386	5/16	8	8	4
2	7100103	100420	1250	567	3/8	10	13	6
3	7100104	100437	1650	748	7/16	11	25	11
3A	7100105	100444	2250	1021	1/2	13	25	11
6	7100108	100475	7200	3266	7/8	22	153	69
8	7100111	100505	15200	6895	1 1/4	32	363	165
10	7100112	100512	21400	9707	1 1/2	38	656	298

Size No.	A		C		D		E		F		G		S		T	
	in.	mm	in.	mm	in.	mm	in.	mm	in.	mm	in.	mm	in.	mm	in.	mm
1A	1 1/4	32	3/4	19	1 1/16	27	19/32	15	1/2	13	1 1/32	9	1/4	6	1 21/32	42
2	1 5/8	41	1	25	1 17/64	32	3/4	19	9/16	14	1 5/32	12	5/16	8	2 3/64	52
3	2	51	1 1/4	32	1 1/2	38	1	25	13/16	21	1 9/32	15	3/8	10	2 15/32	63
3A	2	51	1 1/4	32	1 1/2	38	1	25	13/16	21	1 9/32	15	3/8	10	2 15/32	63
6	3 1/2	89	2	51	2 9/16	65	1 5/8	41	1 3/8	35	1	25	3/4	19	4 5/16	110
8	4 1/2	114	2 1/2	64	3 1/2	89	2 1/8	54	1 13/16	46	1 5/16	33	1	25	5 13/16	148
10	5 5/8	143	3 1/8	79	4 1/16	103	2 1/2	64	2 1/4	57	1 1/2	38	1 1/4	32	6 13/16	173



#### ADVERTENCIA

Para prevenir la posibilidad de lesiones graves:

- **NO EXCEDA** el límite de carga de trabajo (WLL).
- **NO LA UTILICE** choque o golpee la carga.
- **NO USE** el accesorio si se ve deformado o desgastado.



#### WARNING

To prevent the possibility of serious bodily injury:

- **DO NOT EXCEED** the working load limit.
- **DO NOT** shock or impact load.
- **DO NOT USE** if the fitting is visibly distorted or worn.

<b>778-G</b>	<b>Hook &amp; Eye</b>	<b>780-G</b>	<b>Eye &amp; Eye</b>	<b>788-G</b>	<b>Jaw &amp; Jaw</b>
<b>791-S</b>	<b>Stub End</b>	<b>M-15-ST</b>	<b>Stainless Jaw &amp; Eye</b>		
<b>779-G</b>	<b>Hook &amp; Hook</b>	<b>786-G</b>	<b>Jaw &amp; Eye</b>		
<b>M-12-ST</b>	<b>Stainless Eye &amp; Eye</b>	<b>M-16-ST</b>	<b>Stainless Jaw &amp; Jaw</b>		

READ AND UNDERSTAND THESE WARNINGS AND INSTRUCTIONS BEFORE USING TURNBUCKLES.

**IMPORTANT: Instructions For Use**

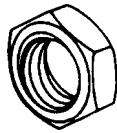
1. Turnbuckles are designed for a static load and are typically used with guy wires.
2. Do not exceed working load limit (WLL). See table below.

**Working Load Limits (lb and kg) — Turnbuckles**

Turnbuckle Size Inches	Carbon Eye & Eye		Stainless Eye & Eye		Carbon Hook & Hook	
	Jaw & Eye lb	Jaw & Eye kg	Jaw & Eye lb	Jaw & Eye kg	Hook & Eye lb	Hook & Eye kg
1/4 x 4	500	227	500	227	400	182
5/16 x 4 1/2	800	363	800	363	700	318
3/8 x 6	1200	545	1200	545	1000	454
1/2 x 6, 9, 12	2200	999	2200	999	1500	681
5/8 x 6, 9, 12, 18	3500	1589	3500	1589	2300	1,044
3/4 x 6, 9, 12, 18, 24	5200	2361	5200	2361	3000	1,362
7/8 x 12, 18	7200	3269	*	*	3600	1,634
1 x 6, 12, 18, 24	10000	4540	10000	4540	4200	1,907
1 1/4 x 12, 18, 24	15200	6901	*	*	5000	2,270

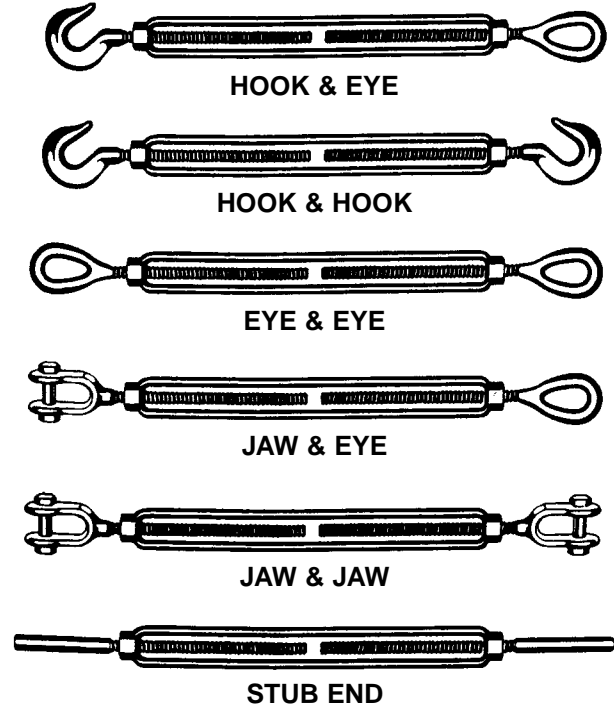
\*Item not manufactured

3. Stub End Turnbuckles are not rated. The rating is only as good as the weld or connection method.



**LOCK NUT**

4. In loads where there is vibration, lock nuts (jam nuts) should be used to prevent the connection from turning or loosening. Lock nuts are available for all turnbuckles and may be ordered separately or assembled on the turnbuckle.
5. The jaw ends come with different hardware depending on their size. Jaws from 1/4" through 5/8" have a hex head bolt and nut. Jaws from 3/4" through 1 1/2" have cotter key and bolt.



**⚠ WARNING**

- Failure to follow the Instructions For Use below and these warnings may cause death or serious injury.
- Use turnbuckles only as indicated.
- Turnbuckles must always be inspected for wear, distortion, cracks and damage before use. If worn, distorted or damaged, discard and replace.
- Turnbuckles are not designed for angular loading, so the loading must be applied in a straight line.

Campbell carbon turnbuckles are all drop-forged and meet the design requirements of Federal Specification ASTM F-1145, Type 1, Grade 1. All types, except stub-end, are galvanized to ASTM A153 specifications.

Campbell stainless turnbuckles are all drop-forged, made of type 316 stainless steel, and have an electro-polished finish.

**⚠ ADVERTENCIA**

Para prevenir la posibilidad de lesiones graves:

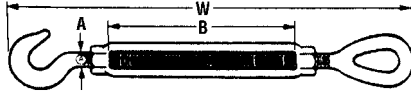
- **NO EXCEDA** el límite de carga de trabajo (WLL).
- **NO LA UTILICE** choque o golpee la carga.
- **NO USE** el accesorio si se ve deformado o desgastado.

**⚠ WARNING**

To prevent the possibility of serious bodily injury:

- **DO NOT EXCEED** the working load limit.
- **DO NOT** shock or impact load.
- **DO NOT USE** if the fitting is visibly distorted or worn.

### Hook & Eye Turnbuckles, 778-G Drop-forged Carbon Steel



- Standard Material: Drop-forged carbon steel
- Standard Finish: Galvanized to ASTM A-153 specification
- Design Factor: 5 to 1
- Other Features: Meets design requirements of ASTM F1145, Type 1, Grade 1, Class F

Cat. No.	UPC No. 020418	Working Load Limit		A (Thread Dia.)		Dimensions B (Take Up)		W (Length)		Weight/100	
		lb	kg	in.	mm	in.	mm	in.	mm	lb	kg
6250101	086564	400	181	1/4	6	4	102	7 <sup>13</sup> / <sub>16</sub>	198	29	13
6250102	086571	700	318	5/16	8	4 <sup>1</sup> / <sub>2</sub>	114	9 <sup>3</sup> / <sub>8</sub>	238	47	21
6250103	086588	1000	454	3/8	10	6	152	11 <sup>5</sup> / <sub>8</sub>	295	85	39
6250105	086595	1500	680	1/2	13	6	152	13 <sup>1</sup> / <sub>8</sub>	333	160	73
6250106	086601	1500	680	1/2	13	9	229	16 <sup>1</sup> / <sub>8</sub>	410	226	103
6250107	086618	1500	680	1/2	13	12	305	19 <sup>1</sup> / <sub>8</sub>	486	245	111
6250109	086625	2300	1043	5/8	16	6	152	14 <sup>9</sup> / <sub>16</sub>	370	264	120
6250110	086632	2300	1043	5/8	16	9	229	17 <sup>9</sup> / <sub>16</sub>	446	315	143
6250111	086649	2300	1043	5/8	16	12	305	20 <sup>9</sup> / <sub>16</sub>	522	371	168
6250112	086656	2300	1043	5/8	16	18	457	26 <sup>15</sup> / <sub>16</sub>	684	480	218
6250113	086663	3000	1361	3/4	19	6	152	16 <sup>3</sup> / <sub>8</sub>	416	382	173
6250114	086670	3000	1361	3/4	19	9	229	19 <sup>3</sup> / <sub>8</sub>	492	467	212
6250115	086687	3000	1361	3/4	19	12	305	22 <sup>3</sup> / <sub>8</sub>	568	3000	1361
6250116	086694	3000	1361	3/4	19	18	457	28 <sup>3</sup> / <sub>8</sub>	721	3000	1361
6250119	086717	3600	1633	7/8	22	12	305	23 <sup>15</sup> / <sub>16</sub>	608	3600	1633
6250120	086724	3600	1633	7/8	22	18	457	29 <sup>15</sup> / <sub>16</sub>	760	3600	1633
6250122	086748	4200	1905	1	25	12	305	25 <sup>13</sup> / <sub>16</sub>	656	4200	1905
6250123	086755	4200	1905	1	25	18	457	31 <sup>13</sup> / <sub>16</sub>	808	4200	1905
6250124	086762	4200	1905	1	25	24	610	37 <sup>13</sup> / <sub>16</sub>	960	4200	1905

#### ⚠ ADVERTENCIA

- Para prevenir la posibilidad de lesiones graves:
- **NO EXCEDA** el límite de carga de trabajo (WLL).
  - **NO LA UTILICE** choque o golpee la carga.
  - **NO USE** el accesorio si se ve deformado o desgastado.

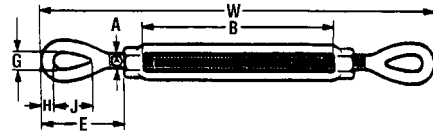
#### ⚠ WARNING

- To prevent the possibility of serious bodily injury:
- **DO NOT EXCEED** the working load limit.
  - **DO NOT** shock or impact load.
  - **DO NOT USE** if the fitting is visibly distorted or worn.

# Eye & Eye Turnbuckles, 780-G Drop-forged Carbon Steel



- Standard Material: Drop-forged carbon steel
- Standard Finish: Galvanized to ASTM A-153 specification
- Design Factor: 5 to 1
- Other Features: Meets design requirements of ASTM F1145, Type 1, Grade 1, Class D



Cat. No.	UPC No. 020418	Working Load Limit		(Dia.) A		(Take Up) B		(Length) W		Dimensions								Weight/100 lb	
		lb	kg	in.	mm	in.	mm	in.	mm	in.	mm	in.	mm	in.	mm	in.	mm	lb	kg
6250301	087042	500	227	1/4	6	4	102	7 7/8	200	1 9/16	40	3/8	10	7/32	6	25/32	20	27	12
6250302	087059	800	363	5/16	8	4 1/2	114	9 7/16	240	2	51	15/32	12	9/32	7	15/16	24	45	20
6250303	087066	1200	544	3/8	10	6	152	11 13/16	300	2 11/32	60	9/16	14	1 1/32	9	1 1/8	29	84	38
6250305	087073	2200	998	1/2	13	6	152	13 7/16	341	2 31/32	75	3/4	19	7/16	11	1 7/16	37	156	71
6250306	087080	2200	998	1/2	13	9	229	16 7/16	418	2 31/32	75	3/4	19	7/16	11	1 7/16	37	198	90
6250307	087097	2200	998	1/2	13	12	305	19 7/16	494	2 31/32	75	3/4	19	7/16	11	1 7/16	37	246	112
6250309	087103	3500	1588	5/8	16	6	152	14 7/8	378	3 1/2	89	29/32	23	1/2	13	1 3/4	44	256	116
6250310	087110	3500	1588	5/8	16	9	229	17 7/8	454	3 1/2	89	29/32	23	1/2	13	1 3/4	44	310	141
6250311	087127	3500	1588	5/8	16	12	305	20 7/8	530	3 1/2	89	29/32	23	1/2	13	1 3/4	44	350	159
6250312	087134	3500	1588	5/8	16	18	457	26 7/8	683	3 1/2	89	29/32	23	1/2	13	1 3/4	44	480	218
6250313	087141	5200	2359	3/4	19	6	152	16 3/4	425	4 1/4	108	1 1/32	26	5/8	16	2 1/8	54	380	173
6250314	087158	5200	2359	3/4	19	9	229	19 3/4	502	4 1/4	108	1 1/32	26	5/8	16	2 1/8	54	458	208
6250315	087165	5200	2359	3/4	19	12	305	22 3/4	578	4 1/4	108	1 1/32	26	5/8	16	2 1/8	54	574	261
6250316	087172	5200	2359	3/4	19	18	457	28 3/4	730	4 1/4	108	1 1/32	26	5/8	16	2 1/8	54	700	318
6250317	087189	5200	2359	3/4	19	24	610	34 3/4	883	4 1/4	108	1 1/32	26	5/8	16	2 1/8	54	860	390
6250319	087196	7200	3266	7/8	22	12	305	24 1/8	613	4 3/4	121	1 9/32	33	3/4	19	2 3/8	60	791	359
6250320	087202	7200	3266	7/8	22	18	457	30 1/8	765	4 3/4	121	1 9/32	33	3/4	19	2 3/8	60	1050	477
6250321	087219	10000	4536	1	25	6	152	20 1/2	521	5 3/4	146	1 15/32	37	7/8	22	3	76	800	363
6250322	087226	10000	4536	1	25	12	305	26 1/2	673	5 3/4	146	1 15/32	37	7/8	22	3	76	1170	531
6250323	087233	10000	4536	1	25	18	457	32 1/2	826	5 3/4	146	1 15/32	37	7/8	22	3	76	1400	636
6250324	087240	10000	4536	1	25	24	610	38 1/2	978	5 3/4	146	1 15/32	37	7/8	22	3	76	1600	726
6250327	087257	15200	6895	1 1/4	32	12	305	29 3/8	746	7	178	1 27/32	47	1 1/8	29	3 9/16	90	2100	953
6250328	087264	15200	6895	1 1/4	32	18	457	35 3/8	899	7	178	1 27/32	47	1 1/8	29	3 9/16	90	2500	1135
6250329	087271	15200	6895	1 1/4	32	24	610	41 3/8	1051	7	178	1 27/32	47	1 1/8	29	3 9/16	90	2800	1271
6250332	087288	21400	9707	1 1/2	38	12	305	33 3/4	857	9	229	2 1/8	54	1 1/4	32	4 1/8	105	2925	1328
6250334	163876	21400	9707	1 1/2	38	24	610	45 3/4	1162	9	229	2 1/8	54	1 1/4	32	4 1/2	114	3800	1725

**⚠ ADVERTENCIA**

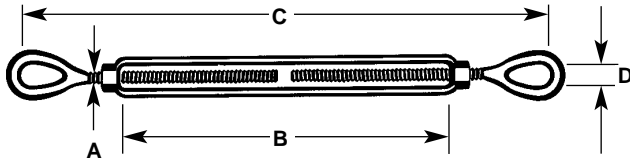
- Para prevenir la posibilidad de lesiones graves:
- **NO EXCEDA** el límite de carga de trabajo (WLL).
  - **NO LA UTILICE** choque o golpee la carga.
  - **NO USE** el accesorio si se ve deformado o desgastado.

**⚠ WARNING**

- To prevent the possibility of serious bodily injury:
- **DO NOT EXCEED** the working load limit.
  - **DO NOT** shock or impact load.
  - **DO NOT USE** if the fitting is visibly distorted or worn.



### Eye & Eye Turnbuckles, M-12-ST Drop-forged Type 316 Stainless Steel



- Standard Material: Forged Type 316 Stainless Steel
- Standard Finish: Electro-polish

Cat. No.	UPC No. 020418	Size (A)		Take-up (B)		Length (C)		Inside Eye Diameter (D)		Weight Each		Working Load Limit	
		in.	mm	in.	mm	in.	mm	in.	mm	lb	kg	lb	kg
6401101	093357	1/4	6	4	102	7 1/2	191	7/16	11	1/2	0.2	500	227
6401102	093364	5/16	8	4 1/2	114	8 1/2	216	1/2	13	1/2	0.2	800	363
6401103	093371	3/8	10	6	152	10 3/4	273	1/2	13	1	0.4	1200	545
6401104	093388	1/2	13	6	152	12	305	3/4	19	1 1/2	0.7	2200	999
6401107	093395	5/8	16	6	152	13 1/2	343	7/8	22	2 1/2	1.1	3500	1589
6401110	093401	3/4	19	6	152	15 1/2	394	1	25	4	1.8	5200	2361
6401117	093425	1	25	6	152	19	483	1 3/8	35	9	4	10000	4540

#### ⚠️ ADVERTENCIA

Para prevenir la posibilidad de lesiones graves:

- **NO EXCEDA** el límite de carga de trabajo (WLL).
- **NO LA UTILICE** choque o golpee la carga.
- **NO USE** el accesorio si se ve deformado o desgastado.

#### ⚠️ WARNING

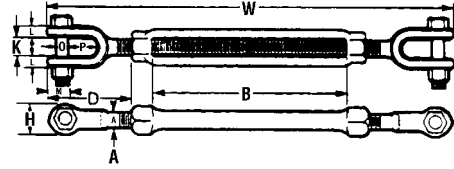
To prevent the possibility of serious bodily injury:

- **DO NOT EXCEED** the working load limit.
- **DO NOT** shock or impact load.
- **DO NOT USE** if the fitting is visibly distorted or worn.

# Jaw & Jaw Turnbuckles, 788-G Drop-forged Carbon Steel



- Standard Material: Drop-forged carbon steel
- Standard Finish: Galvanized to ASTM A-153 specification
- Design Factor: 5 to 1
- Other Features: Meets design requirements of Federal Specification ASTM F1145, Type 1, Grade 1, Class G
- Jaws on sizes 1/4 through 5/8 have hex head bolt and nut .  
Jaws on sizes 3/4 through 1-1/2 have cotter key and bolt



Cat. No.	UPC No. 020418	Working Load Limit		Thread Dia.		Dimensions Take Up		Length		Weight/100	
		lb	kg	in.	mm	in.	mm	in.	mm	lb	kg
6250501	087646	500	227	1/4	6	4	102	7 <sup>15</sup> / <sub>16</sub>	202	35	16
6250502	087653	800	363	5/16	8	4 <sup>1</sup> / <sub>2</sub>	114	9 <sup>5</sup> / <sub>16</sub>	237	51	23
6250503	087660	1200	544	3/8	10	6	152	11 <sup>3</sup> / <sub>16</sub>	284	94	43
6250505	087677	2200	998	1/2	13	6	152	12 <sup>3</sup> / <sub>4</sub>	324	170	77
6250506	087684	2200	998	1/2	13	9	229	15 <sup>3</sup> / <sub>4</sub>	400	215	98
6250507	087691	2200	998	1/2	13	12	305	18 <sup>3</sup> / <sub>4</sub>	476	265	120
6250509	087707	3500	1588	5/8	16	6	152	14 <sup>3</sup> / <sub>4</sub>	375	285	129
6250510	087714	3500	1588	5/8	16	9	229	17 <sup>3</sup> / <sub>4</sub>	451	349	158
6250511	087721	3500	1588	5/8	16	12	305	20 <sup>3</sup> / <sub>4</sub>	527	400	182
6250512	087738	3500	1588	5/8	16	18	457	26 <sup>3</sup> / <sub>4</sub>	679	450	204
6250513	087745	5200	2359	3/4	19	6	152	15 <sup>3</sup> / <sub>4</sub>	400	443	201
6250514	087752	5200	2359	3/4	19	9	229	18 <sup>3</sup> / <sub>4</sub>	476	518	235
6250515	087769	5200	2359	3/4	19	12	305	21 <sup>3</sup> / <sub>4</sub>	552	633	287
6250516	087776	5200	2359	3/4	19	18	457	27 <sup>3</sup> / <sub>4</sub>	705	760	345
6250517	087783	5200	2359	3/4	19	24	610	33 <sup>3</sup> / <sub>4</sub>	857	865	393
6250519	087790	7200	3266	7/8	22	12	305	23 <sup>3</sup> / <sub>8</sub>	594	837	380
6250520	087806	7200	3266	7/8	22	18	457	29 <sup>3</sup> / <sub>8</sub>	746	1208	548
6250521	087813	10000	4536	1	25	6	152	19 <sup>7</sup> / <sub>16</sub>	494	947	430
6250522	087820	10000	4536	1	25	12	305	25 <sup>7</sup> / <sub>16</sub>	646	1290	586
6250523	087837	10000	4536	1	25	18	457	31 <sup>7</sup> / <sub>16</sub>	799	1560	708
6250524	087844	10000	4536	1	25	24	610	37 <sup>7</sup> / <sub>16</sub>	951	1785	810
6250527	087851	15200	6895	1 <sup>1</sup> / <sub>4</sub>	32	12	305	27 <sup>1</sup> / <sub>2</sub>	699	2140	972
6250528	087868	15200	6895	1 <sup>1</sup> / <sub>4</sub>	32	18	457	33 <sup>1</sup> / <sub>2</sub>	851	2560	1162
6250529	087875	15200	6895	1 <sup>1</sup> / <sub>4</sub>	32	24	610	39 <sup>1</sup> / <sub>2</sub>	1003	3100	1407
6250532	087882	21400	9707	1 <sup>1</sup> / <sub>2</sub>	38	12	305	31 <sup>1</sup> / <sub>4</sub>	794	3200	1453
6250533	087899	21400	9707	1 <sup>1</sup> / <sub>2</sub>	38	18	457	37 <sup>1</sup> / <sub>4</sub>	946	3700	1680
6250534	163890	21400	9707	1 <sup>1</sup> / <sub>2</sub>	38	24	610	43 <sup>1</sup> / <sub>4</sub>	1099	4100	1861

**⚠️ ADVERTENCIA**

- Para prevenir la posibilidad de lesiones graves:
- **NO EXCEDA** el límite de carga de trabajo (WLL).
  - **NO LA UTILICE** choque o golpee la carga.
  - **NO USE** el accesorio si se ve deformado o desgastado.

**⚠️ WARNING**

- To prevent the possibility of serious bodily injury:
- **DO NOT EXCEED** the working load limit.
  - **DO NOT** shock or impact load.
  - **DO NOT USE** if the fitting is visibly distorted or worn.

### Jaw & Jaw Turnbuckles, 788-G Drop-forged Carbon Steel

Cat. No.	D		H		K	Dimensions L				M		Q		P	
	in.	mm	in.	mm		in.	mm	in.	mm	in.	mm	in.	mm	in.	mm
6250501	1 <sup>19</sup> / <sub>32</sub>	40	5/8	16	1 <sup>13</sup> / <sub>32</sub>	10	3/16	5	1 <sup>15</sup> / <sub>32</sub>	12	1/4	6	3/4	16	
6250502	1 <sup>15</sup> / <sub>16</sub>	49	1 <sup>1</sup> / <sub>16</sub>	17	1/2	13	3/16	5	1/2	13	1/4	6	3/4	19	
6250503	2 <sup>1</sup> / <sub>32</sub>	52	7/8	22	1/2	13	1/4	6	9/16	14	5/16	8	1 <sup>3</sup> / <sub>16</sub>	21	
6250505	2 <sup>5</sup> / <sub>8</sub>	67	1 <sup>3</sup> / <sub>16</sub>	30	5/8	16	5/16	8	3/4	19	3/8	10	1 <sup>1</sup> / <sub>16</sub>	27	
6250506	2 <sup>5</sup> / <sub>8</sub>	67	1 <sup>3</sup> / <sub>16</sub>	30	5/8	16	5/16	8	3/4	19	3/8	10	1 <sup>1</sup> / <sub>16</sub>	27	
6250507	2 <sup>5</sup> / <sub>8</sub>	67	1 <sup>3</sup> / <sub>16</sub>	30	5/8	16	5/16	8	3/4	19	3/8	10	1 <sup>1</sup> / <sub>16</sub>	27	
6250509	3 <sup>3</sup> / <sub>8</sub>	86	1 <sup>3</sup> / <sub>8</sub>	35	3/4	19	7/16	11	1 <sup>15</sup> / <sub>16</sub>	24	1/2	13	1 <sup>3</sup> / <sub>8</sub>	35	
6250510	3 <sup>3</sup> / <sub>8</sub>	86	1 <sup>3</sup> / <sub>8</sub>	35	3/4	19	7/16	11	1 <sup>15</sup> / <sub>16</sub>	24	1/2	13	1 <sup>3</sup> / <sub>8</sub>	35	
6250511	3 <sup>3</sup> / <sub>8</sub>	86	1 <sup>3</sup> / <sub>8</sub>	35	3/4	19	7/16	11	1 <sup>15</sup> / <sub>16</sub>	24	1/2	13	1 <sup>3</sup> / <sub>8</sub>	35	
6250512	3 <sup>3</sup> / <sub>8</sub>	86	1 <sup>3</sup> / <sub>8</sub>	35	3/4	19	7/16	11	1 <sup>15</sup> / <sub>16</sub>	24	1/2	13	1 <sup>3</sup> / <sub>8</sub>	35	
6250513	3 <sup>3</sup> / <sub>4</sub>	95	1 <sup>13</sup> / <sub>16</sub>	46	1 <sup>15</sup> / <sub>16</sub>	24	1 <sup>15</sup> / <sub>32</sub>	12	1 <sup>3</sup> / <sub>16</sub>	30	5/8	16	1 <sup>1</sup> / <sub>2</sub>	38	
6250514	3 <sup>3</sup> / <sub>4</sub>	95	1 <sup>13</sup> / <sub>16</sub>	46	1 <sup>15</sup> / <sub>16</sub>	24	1 <sup>15</sup> / <sub>32</sub>	12	1 <sup>3</sup> / <sub>16</sub>	30	5/8	16	1 <sup>1</sup> / <sub>2</sub>	38	
6250515	3 <sup>3</sup> / <sub>4</sub>	95	1 <sup>13</sup> / <sub>16</sub>	46	1 <sup>15</sup> / <sub>16</sub>	24	1 <sup>15</sup> / <sub>32</sub>	12	1 <sup>3</sup> / <sub>16</sub>	30	5/8	16	1 <sup>1</sup> / <sub>2</sub>	38	
6250516	3 <sup>3</sup> / <sub>4</sub>	95	1 <sup>13</sup> / <sub>16</sub>	46	1 <sup>15</sup> / <sub>16</sub>	24	1 <sup>15</sup> / <sub>32</sub>	12	1 <sup>3</sup> / <sub>16</sub>	30	5/8	16	1 <sup>1</sup> / <sub>2</sub>	38	
6250517	3 <sup>3</sup> / <sub>4</sub>	95	1 <sup>13</sup> / <sub>16</sub>	46	1 <sup>15</sup> / <sub>16</sub>	24	1 <sup>15</sup> / <sub>32</sub>	12	1 <sup>3</sup> / <sub>16</sub>	30	5/8	16	1 <sup>1</sup> / <sub>2</sub>	38	
6250519	4 <sup>3</sup> / <sub>8</sub>	111	2	51	1 <sup>1</sup> / <sub>8</sub>	29	1 <sup>19</sup> / <sub>32</sub>	15	1 <sup>3</sup> / <sub>8</sub>	35	3/4	19	1 <sup>3</sup> / <sub>4</sub>	44	
6250520	4 <sup>3</sup> / <sub>8</sub>	111	2	51	1 <sup>1</sup> / <sub>8</sub>	29	1 <sup>19</sup> / <sub>32</sub>	15	1 <sup>3</sup> / <sub>8</sub>	35	3/4	19	1 <sup>3</sup> / <sub>4</sub>	44	
6250521	5 <sup>7</sup> / <sub>32</sub>	133	2 <sup>3</sup> / <sub>16</sub>	56	1 <sup>3</sup> / <sub>16</sub>	30	3/4	19	1 <sup>9</sup> / <sub>16</sub>	40	7/8	22	2 <sup>1</sup> / <sub>16</sub>	52	
6250522	5 <sup>7</sup> / <sub>32</sub>	133	2 <sup>3</sup> / <sub>16</sub>	56	1 <sup>3</sup> / <sub>16</sub>	30	3/4	19	1 <sup>9</sup> / <sub>16</sub>	40	7/8	22	2 <sup>1</sup> / <sub>16</sub>	52	
6250523	5 <sup>7</sup> / <sub>32</sub>	133	2 <sup>3</sup> / <sub>16</sub>	56	1 <sup>3</sup> / <sub>16</sub>	30	3/4	19	1 <sup>9</sup> / <sub>16</sub>	40	7/8	22	2 <sup>1</sup> / <sub>16</sub>	52	
6250524	5 <sup>7</sup> / <sub>32</sub>	133	2 <sup>3</sup> / <sub>16</sub>	56	1 <sup>3</sup> / <sub>16</sub>	30	3/4	19	1 <sup>9</sup> / <sub>16</sub>	40	7/8	22	2 <sup>1</sup> / <sub>16</sub>	52	
6250527	6 <sup>1</sup> / <sub>16</sub>	154	2 <sup>7</sup> / <sub>8</sub>	73	1 <sup>3</sup> / <sub>4</sub>	44	7/8	22	2	51	1 <sup>1</sup> / <sub>8</sub>	29	2 <sup>7</sup> / <sub>16</sub>	62	
6250528	6 <sup>1</sup> / <sub>16</sub>	154	2 <sup>7</sup> / <sub>8</sub>	73	1 <sup>3</sup> / <sub>4</sub>	44	7/8	22	2	51	1 <sup>1</sup> / <sub>8</sub>	29	2 <sup>7</sup> / <sub>16</sub>	62	
6250529	6 <sup>1</sup> / <sub>16</sub>	154	2 <sup>7</sup> / <sub>8</sub>	73	1 <sup>3</sup> / <sub>4</sub>	44	7/8	22	2	51	1 <sup>1</sup> / <sub>8</sub>	29	2 <sup>7</sup> / <sub>16</sub>	62	
6250532	8 <sup>1</sup> / <sub>2</sub>	216	3 <sup>1</sup> / <sub>4</sub>	83	2 <sup>1</sup> / <sub>16</sub>	52	1 <sup>3</sup> / <sub>32</sub>	28	2 <sup>5</sup> / <sub>16</sub>	59	1 <sup>3</sup> / <sub>8</sub>	35	2 <sup>13</sup> / <sub>16</sub>	71	
6250533	8 <sup>1</sup> / <sub>2</sub>	216	3 <sup>1</sup> / <sub>4</sub>	83	2 <sup>1</sup> / <sub>16</sub>	52	1 <sup>3</sup> / <sub>32</sub>	28	2 <sup>5</sup> / <sub>16</sub>	59	1 <sup>3</sup> / <sub>8</sub>	35	2 <sup>13</sup> / <sub>16</sub>	71	
6250534	8 <sup>1</sup> / <sub>2</sub>	216	3 <sup>1</sup> / <sub>4</sub>	83	2 <sup>1</sup> / <sub>16</sub>	52	1 <sup>3</sup> / <sub>32</sub>	28	2 <sup>5</sup> / <sub>16</sub>	59	1 <sup>3</sup> / <sub>8</sub>	35	2 <sup>13</sup> / <sub>16</sub>	71	



#### ADVERTENCIA

Para prevenir la posibilidad de lesiones graves:

- **NO EXCEDA** el límite de carga de trabajo (WLL).
- **NO LA UTILICE** choque o golpee la carga.
- **NO USE** el accesorio si se ve deformado o desgastado.



#### WARNING

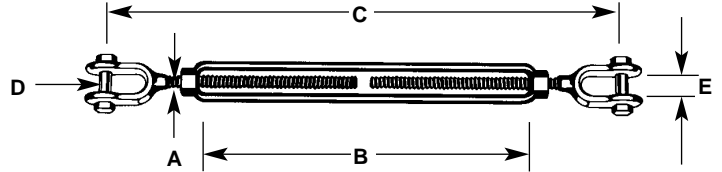
To prevent the possibility of serious bodily injury:

- **DO NOT EXCEED** the working load limit.
- **DO NOT** shock or impact load.
- **DO NOT USE** if the fitting is visibly distorted or worn.

# Jaw & Jaw Turnbuckles, M-16-ST Drop-forged Type 316 Stainless Steel



- Standard Material: Forged Type 316 Stainless Steel
- Standard Finish: Electro-polish



Cat. No.	UPC No. 020418	Size (A)		Take Up (B)		Dimensions Length (C)		Pin Dia. (D)		Jaw Opening (E)		Weight Each		Working Load Limit	
		in.	mm	in.	mm	in.	mm	in.	mm	in.	mm	lb	kg	lb	kg
6401201	093432	1/4	6	4	102	7 1/2	191	3/16	5	7/16	11	1/2	0.2	500	227
6401202	093449	5/16	8	4 1/2	114	8 1/2	216	1/4	6	1/2	13	1/2	0.2	800	363
6401203	093456	3/8	10	6	152	10 3/4	273	5/16	8	9/16	14	3/4	0.3	1200	545
6401204	093463	1/2	13	6	152	12	305	3/8	9	5/8	16	1 1/2	0.7	2200	999
6401207	093470	5/8	16	6	152	13 1/2	343	1/2	13	13/16	21	3	1.3	3500	1589
6401210	093487	3/4	19	6	152	15 1/2	394	5/8	16	1	25	5	2.2	5200	2361
6401217	093494	1	25	6	152	19	483	3/4	19	1 1/4	32	10 1/2	4.7	10000	4540

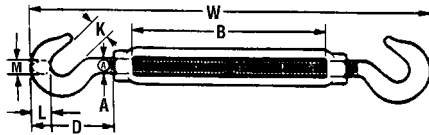
**⚠ ADVERTENCIA**

- Para prevenir la posibilidad de lesiones graves:
- **NO EXCEDA** el límite de carga de trabajo (WLL).
  - **NO LA UTILICE** choque o golpee la carga.
  - **NO USE** el accesorio si se ve deformado o desgastado.

**⚠ WARNING**

- To prevent the possibility of serious bodily injury:
- **DO NOT EXCEED** the working load limit.
  - **DO NOT** shock or impact load.
  - **DO NOT USE** if the fitting is visibly distorted or worn.

### Hook and Hook Turnbuckles, 779-G Drop-forged Carbon Steel



- Standard Material: Drop-forged carbon steel
- Standard Finish: Galvanized to ASTM A-153 specification
- Design Factor: 5 to 1
- Other Features: Meets design requirements of Federal Specification ASTM F1145, Type 1, Grade 1, Class E

Cat. No.	UPC No.	Working Load Limit		(Dia.) A		(Take Up) B		(Length) W		Dimensions								Weight/100 lb	
				in.	mm	in.	mm	in.	mm	in.	mm	in.	mm	in.	mm	in.	mm		
6250201	086809	400	181	1/4	6	4	102	7 3/4	197	1 7/8	48	7/16	11	3/8	10	1/4	6	32	15
6250202	086816	700	318	5/16	8	4 1/2	114	9 3/8	238	2 3/32	53	1/2	13	1/2	13	5/16	8	50	23
6250203	086823	1000	454	3/8	10	6	152	11 7/16	291	2 7/16	62	9/16	14	5/8	16	3/8	10	86	39
6250205	086830	1500	680	1/2	13	6	152	12 3/4	324	2 27/32	72	5/8	16	3/4	19	1/2	13	164	74
6250206	086847	1500	680	1/2	13	9	229	15 3/4	400	2 27/32	72	5/8	16	3/4	19	1/2	13	213	97
6250207	086854	1500	680	1/2	13	12	305	18 3/4	476	2 27/32	72	5/8	16	3/4	19	1/2	13	245	111
6250209	086861	2300	1043	5/8	16	6	152	14 1/4	362	3 1/2	89	27/32	21	7/8	22	5/8	16	272	123
6250210	086878	2300	1043	5/8	16	9	229	17 1/4	438	3 1/2	89	27/32	21	7/8	22	5/8	16	320	145
6250211	086885	2300	1043	5/8	16	12	305	20 1/4	514	3 1/2	89	27/32	21	7/8	22	5/8	16	392	178
6250212	086892	2300	1043	5/8	16	18	457	27	686	3 1/2	89	27/32	21	7/8	22	5/8	16	480	218
6250213	086908	3000	1361	3/4	19	6	152	16	406	3 31/32	101	31/32	25	1	25	3/4	19	385	175
6250214	086915	3000	1361	3/4	19	9	229	19	483	3 31/32	101	31/32	25	1	25	3/4	19	476	216
6250215	086922	3000	1361	3/4	19	12	305	22	559	3 31/32	101	31/32	25	1	25	3/4	19	555	252
6250216	086939	3000	1361	3/4	19	18	457	28	711	3 31/32	101	31/32	25	1	25	3/4	19	725	329
6250219	086953	3600	1633	7/8	22	12	305	23 3/4	603	3 27/32	98	1 1/4	32	1 3/16	30	7/8	22	710	322
6250220	086960	3600	1633	7/8	22	18	457	29 3/4	756	3 27/32	98	1 1/4	32	1 3/16	30	7/8	22	960	436
6250222	086984	4200	1905	1	25	12	305	25 1/8	638	5 13/32	137	1 3/8	35	1 1/4	32	1	25	1113	505
6250225	▽087011	5000	2268	1 1/4	32	12	305	27 1/8	689	5 7/8	149	1 5/8	41	1 5/8	41	1 9/32	33	2000	908

▽ These items are made to order.



#### ADVERTENCIA

Para prevenir la posibilidad de lesiones graves:

- **NO EXCEDA** el límite de carga de trabajo (WLL).
- **NO LA UTILICE** choque o golpee la carga.
- **NO USE** el accesorio si se ve deformado o desgastado.



#### WARNING

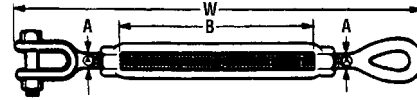
To prevent the possibility of serious bodily injury:

- **DO NOT EXCEED** the working load limit.
- **DO NOT** shock or impact load.
- **DO NOT USE** if the fitting is visibly distorted or worn.

Jaw & Eye Turnbuckles, 786-G Drop-forged Carbon Steel



- See Figure 780-G for eye dimensions
- See Figure 788-G for jaw dimensions
- Drop-forged Carbon Steel
- Galvanized to ASTM A-153 specifications
- Design factor 5 to 1



Cat. No.	UPC No. 020418	Working Load Limit		Thread Dia. (A)		Dimensions Take Up (B)		Length (W)		Weight/100	
		lb	kg	in.	mm	in.	mm	in.	mm	lb	kg
6250401	087387	500	227	1/4	6	4	102	7 7/8	200	33	15
6250402	087394	800	363	5/16	8	4 1/2	114	9 3/8	238	48	22
6250403	087400	1200	544	3/8	10	6	152	11 9/16	294	90	41
6250405	087417	2200	998	1/2	13	6	152	13 1/8	333	164	74
6250406	087424	2200	998	1/2	13	9	229	16 1/8	410	208	94
6250407	087431	2200	998	1/2	13	12	305	19 1/8	486	257	117
6250409	087448	3500	1588	5/8	16	6	152	14 7/8	378	265	120
6250410	087455	3500	1588	5/8	16	9	229	17 13/16	452	330	150
6250411	087462	3500	1588	5/8	16	12	305	20 13/16	529	380	173
6250413	087486	5200	2359	3/4	19	6	152	16 1/4	413	412	187
6250414	087493	5200	2359	3/4	19	9	229	19 1/4	489	488	222
6250415	087509	5200	2359	3/4	19	12	305	22 1/4	565	604	274
6250416	087516	5200	2359	3/4	19	18	457	28 1/4	718	730	331
6250419	087530	7200	3266	7/8	22	12	305	23 3/4	603	814	370
6250420	087547	7200	3266	7/8	22	18	457	29 3/4	756	1142	518
6250421	087554	10000	4536	1	25	6	152	20	508	912	414
6250422	087561	10000	4536	1	25	12	305	26	660	1206	548
6250423	087578	10000	4536	1	25	18	457	32	813	1484	674
6250424	087585	10000	4536	1	25	24	610	38	965	1700	772
6250427	087592	15200	6895	1 1/4	32	12	305	28 9/16	725	1980	899
6250428	087608	15200	6895	1 1/4	32	18	457	34 9/16	878	2400	1,090
6250432	087622	21400	9707	1 1/2	38	12	305	30 7/8	784	3050	1,385

**⚠ ADVERTENCIA**

Para prevenir la posibilidad de lesiones graves:

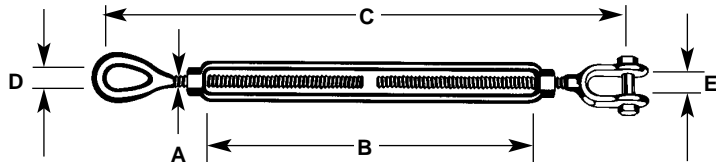
- **NO EXCEDA** el límite de carga de trabajo (WLL).
- **NO LA UTILICE** choque o golpee la carga.
- **NO USE** el accesorio si se ve deformado o desgastado.

**⚠ WARNING**

To prevent the possibility of serious bodily injury:

- **DO NOT EXCEED** the working load limit.
- **DO NOT** shock or impact load.
- **DO NOT USE** if the fitting is visibly distorted or worn.

### Jaw & Eye Turnbuckles, M-15-ST Drop-forged Type 316 Stainless Steel



- Standard Material: Forged Type 316 Stainless Steel
- Standard Finish: Electro-polish

Cat. No.	UPC No. 020418	Size (A)		Take Up (B)		Length (C)		Inside Eye Diameter (D)		Jaw Opening (E)		Weight Each		Working Load Limit	
		in.	mm	in.	mm	in.	mm	in.	mm	in.	mm	lb	kg	lb	kg
6401401	093586	1/4	6	4	102	7 1/2	191	7/16	11	7/16	11	1/2	0.2	500	227
6401402	093593	5/16	8	4 1/2	114	8 1/2	216	1/2	13	1/2	13	1/2	0.2	800	363
6401403	093609	3/8	10	6	152	10 3/4	273	1/2	13	9/16	14	7/8	0.4	1200	545
6401404	093616	1/2	13	6	152	12	305	3/4	19	5/8	16	1 5/8	0.7	2200	999
6401407	093623	5/8	16	6	152	13 1/2	343	7/8	22	13/16	21	3	1.3	3500	1589
6401410	093630	3/4	19	6	152	15 1/2	394	1	25	1	25	4 3/4	2.1	5200	2361

#### ADVERTENCIA

Para prevenir la posibilidad de lesiones graves:

- **NO EXCEDA** el límite de carga de trabajo (WLL).
- **NO LA UTILICE** choque o golpee la carga.
- **NO USE** el accesorio si se ve deformado o desgastado.

#### WARNING

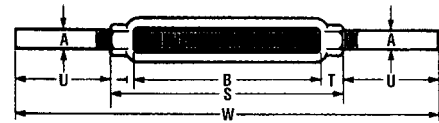
To prevent the possibility of serious bodily injury:

- **DO NOT EXCEED** the working load limit.
- **DO NOT** shock or impact load.
- **DO NOT USE** if the fitting is visibly distorted or worn.

# Stub End Turnbuckles, 791-S Drop-forged Carbon Steel



- Standard Material: Drop-forged carbon steel
- Standard Finish: Self-colored
- Design Factor: 5 to 1
- Other Features: Meets design requirements of Federal Specification ASTM F1145, Type 1, Grade 1, Class C



Cat. No.	UPC No. 020418	Working Load Limit		(Dia.) A		(Take Up) B		(Length) W		S		T		U		Weight/100	
		lb	kg	in.	mm	in.	mm	in.	mm	in.	mm	in.	mm	in.	mm	lb	kg
6255601	089961	500	227	1/4	6	4	102	10	254	4 3/4	121	3/8	10	2 5/8	67	28	13
6255603	089985	1200	544	3/8	10	6	152	16	406	7 1/8	181	9/16	14	4 7/16	113	86	39
6255604	089992	2200	998	1/2	13	4	102	14	356	5 1/2	140	3/4	19	4 1/4	108	112	51
6255605	090004	2200	998	1/2	13	6	152	16	406	7 1/2	191	3/4	19	4 1/4	108	152	69
6255606	090011	2200	998	1/2	13	9	229	19	483	10 1/2	267	3/4	19	4 1/4	108	200	91
6255607	090028	2200	998	1/2	13	12	305	22	559	13 1/2	343	3/4	19	4 1/4	108	327	148
6255609	090042	3500	1588	5/8	16	6	152	16	406	7 7/8	200	5/16	24	4 1/16	103	237	108
6255610	090059	3500	1588	5/8	16	9	229	19	483	10 7/8	276	5/16	24	4 1/16	103	286	130
6255611	090066	3500	1588	5/8	16	12	305	22	559	13 7/8	352	5/16	24	4 1/16	103	330	150
6255613	090080	5200	2359	3/4	19	6	152	17	432	8 1/4	210	1 1/8	29	4 3/8	111	336	153
6255614	090097	5200	2359	3/4	19	9	229	20	508	11 1/4	286	1 1/8	29	4 3/8	111	420	191
6255615	090103	5200	2359	3/4	19	12	305	23	584	14 1/4	362	1 1/8	29	4 3/8	111	490	222
6255618	090134	7200	3266	7/8	22	6	152	18	457	8 5/8	219	1 5/16	33	4 11/16	119	485	220
6255621	090165	10000	4536	1	25	6	152	19	483	9	229	1 1/2	38	5	127	680	309
6255622	090172	10000	4536	1	25	12	305	25	635	15	381	1 1/2	38	5	127	950	431
6255625	090202	15200	6895	1 1/8	29	6	152	19	483	9 5/8	244	1 13/16	46	4 11/16	119	986	448
6255626	090219	15200	6895	1 1/4	32	6	152	20	508	9 3/8	238	1 11/16	43	5 5/16	135	1160	527
6255627	090226	15200	6895	1 1/4	32	12	305	26	660	15 3/8	391	1 11/16	43	5 5/16	135	1385	629
6255631	090264	21400	9707	1 1/2	38	6	152	21	533	9 3/4	248	1 7/8	48	5 5/8	143	1580	717
6255632	090271	21400	9707	1 1/2	38	12	305	27	686	15 3/4	400	1 7/8	48	5 5/8	143	2250	1022

**⚠ ADVERTENCIA**

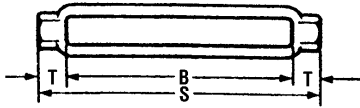
- Para prevenir la posibilidad de lesiones graves:
- **NO EXCEDA** el límite de carga de trabajo (WLL).
  - **NO LA UTILICE** choque o golpee la carga.
  - **NO USE** el accesorio si se ve deformado o desgastado.

**⚠ WARNING**

- To prevent the possibility of serious bodily injury:
- **DO NOT EXCEED** the working load limit.
  - **DO NOT** shock or impact load.
  - **DO NOT USE** if the fitting is visibly distorted or worn.



### Turnbuckle Bodies, 790-S, 790-G Drop-forged Carbon Steel



- Standard Material: Drop-forged carbon steel
- Standard Finish: Self-colored or galvanized to ASTM A-153 specification
- Design Factor: 5 to 1
- Other Features: Meets design requirements of Federal Specification ASTM F1145, Type 1, Grade 1, Class B

Galvanized Cat. No.	UPC No. 020418	Working Load Limit		Thread Dia.		Dimensions						Weight/ 100	
		lb	kg	in.	mm	B	S	T	mm	in.	lb	kg	
6250701	088056	500	227	1/4	6	4	102	4 3/4	121	3/8	10	16	7
6250702	088063	800	363	5/16	8	4 1/2	114	5 7/16	138	15/32	12	22	10
6250703	088070	1200	544	3/8	10	6	152	7 1/8	181	9/16	14	43	20
6250705	088094	2200	998	1/2	13	6	152	7 1/2	191	3/4	19	76	35
6250706	088100	2200	998	1/2	13	9	229	10 1/2	267	3/4	19	109	49
6250707	088117	2200	998	1/2	13	12	305	13 1/2	343	3/4	19	130	59
6250709	088131	3500	1588	5/8	16	6	152	7 7/8	200	15/16	24	110	50
6250710	088148	3500	1588	5/8	16	9	229	10 7/8	276	15/16	24	145	66
6250711	088155	3500	1588	5/8	16	12	305	13 7/8	352	15/16	24	170	77
6250713	088179	5200	2359	3/4	19	6	152	8 1/4	210	1 1/8	29	150	68
6250714	088186	5200	2359	3/4	19	9	229	11 1/4	286	1 1/8	29	200	91
6250715	088193	5200	2359	3/4	19	12	305	14 1/4	362	1 1/8	29	250	114
6250718	088223	7200	3266	7/8	22	6	152	8 5/8	219	1 5/16	33	215	98
6250721	088254	10000	4536	1	25	6	152	9	229	1 1/2	38	300	136
6250722	088261	10000	4536	1	25	12	305	15	381	1 1/2	38	465	211
6250723	▽088278	10000	4536	1	25	18	457	21	533	1 1/2	38	610	277
6250726	088308	15200	6895	1 1/4	32	6	152	9 3/8	238	1 11/16	43	525	238
6250727	088315	15200	6895	1 1/4	32	12	305	15 3/8	391	1 11/16	43	650	295
6250728	088322	15200	6895	1 1/4	32	18	457	21 3/8	543	1 11/16	43	925	420
6250732	088360	21400	9707	1 1/2	38	12	305	15 3/4	400	1 7/8	48	970	440

▽ These items are made to order.



#### ADVERTENCIA

Para prevenir la posibilidad de lesiones graves:

- **NO EXCEDA** el límite de carga de trabajo (WLL).
- **NO LA UTILICE** choque o golpee la carga.
- **NO USE** el accesorio si se ve deformado o desgastado.

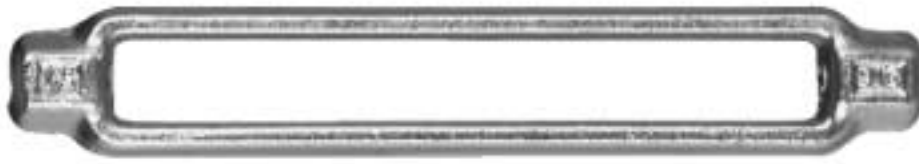


#### WARNING

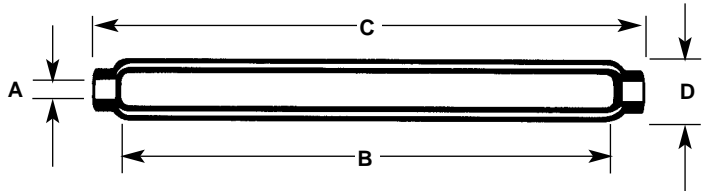
To prevent the possibility of serious bodily injury:

- **DO NOT EXCEED** the working load limit.
- **DO NOT** shock or impact load.
- **DO NOT USE** if the fitting is visibly distorted or worn.

## Turnbuckle Bodies, M-10-ST Drop-forged Type 316 Stainless Steel



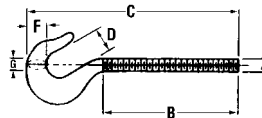
- Standard Material: Forged Type 316 Stainless Steel
- Standard Finish: Electro-polish



Cat. No.	UPC No. 020418	Size (A)		Take-up (B)		Length (C)		Width (D)		Thread	Working Load Limit		Weight Each	
		in.	mm	in.	mm	in.	mm	in.	mm		lb	kg	lb	kg
6400101	092794	1/4	6	4	102	4 3/4	121	2 3/32	18	1/4 x 20	500	227	0.015	.007
6400102	092800	5/16	8	4 1/2	114	5 1/2	140	1 3/16	21	5/16 x 18	800	363	0.13	.059
6400103	092817	3/8	10	6	152	7 1/8	181	3 1/32	25	3/8 x 16	1200	544	0.43	.195
6400104	092824	1/2	13	6	152	7 1/2	191	1 5/32	29	1/2 x 13	2200	998	0.50	.227
6400107	092831	5/8	16	6	152	7 7/8	200	1 3/8	35	5/8 x 11	3500	1588	0.75	.341
6400110	092848	3/4	19	6	152	8 1/4	210	1 11/16	43	3/4 x 10	5200	2359	1.50	.681
6400117	092862	1	25	6	152	9	229	2 1/4	57	1 x 8	10000	4540	2.75	1.249

## Turnbuckle Hook End, 879-G Drop-forged Carbon Steel

- Standard Material: Drop-forged carbon steel
- Standard Finish: Galvanized



Right H. Thread		Left H. Thread		Working Load Limit		For Turnbuckle		Thread Length			879-G Hook Dimensions						Weight Each				
Cat. No.	UPC No. 020418	Cat. No.	UPC No. 020418	lb	kg	Dia. (A)	Take Up	B	C	D	F	G	D	F	G	lb	kg				
						in.	mm	in.	mm	in.	mm	in.	mm	in.	mm	in.	mm				
6251501	∇089695	6251401	∇089459	400	181	1/4	6	4	102	2 3/8	60	3 7/8	98	7 1/16	11	3/8	10	1/4	6	.09	.04
6251503	089718	6251403	∇089473	1000	454	3/8	10	6	152	3 9/16	90	5 3/4	146	9 1/16	14	5/8	16	3/8	10	.25	.11
6251505	089725	6251405	089480	1500	680	1/2	13	6	152	3 3/4	95	6 3/8	162	5 5/8	16	3/4	19	1/2	13	.45	.20
6251507	089749	--	--	1500	680	1/2	13	12	305	6 3/4	171	9 3/8	238	5 5/8	16	3/4	19	1/2	13	.65	.30
6251509	∇089756	--	--	2300	1043	5/8	16	6	152	4	102	7 1/8	181	2 7/32	21	7/8	22	5/8	16	.80	.36

∇ These items are made to order.

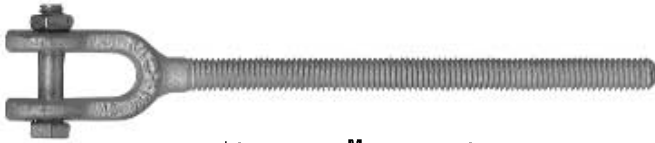
### ⚠ ADVERTENCIA

- Para prevenir la posibilidad de lesiones graves:
- **NO EXCEDA** el límite de carga de trabajo (WLL).
  - **NO LA UTILICE** choque o golpee la carga.
  - **NO USE** el accesorio si se ve deformado o desgastado.

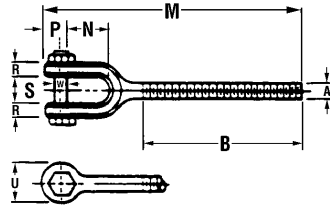
### ⚠ WARNING

- To prevent the possibility of serious bodily injury:
- **DO NOT EXCEED** the working load limit.
  - **DO NOT** shock or impact load.
  - **DO NOT USE** if the fitting is visibly distorted or worn.

### Turnbuckle Jaw End, 888-G Drop-forged Carbon Steel



- Standard Material: Drop-forged carbon steel
- Standard Finish: Galvanized



Right H. Thread		Left H. Thread		Working Load Limit		For Turnbuckle				Weight Each	
Cat. No.	UPC No. 020418	Cat. No.	UPC No. 020418	lb	kg	Thread Dia. in.	mm	Take Up in.	mm	lb	kg
6251301	089190	--	--	500	227	1/4	6	4	102	.10	.05
6251303	089213	6251203	088957	1200	544	3/8	10	6	152	.23	.10
6251305	089220	6251205	088964	2200	998	1/2	13	6	152	.55	.25
6251307	089244	--	--	2200	998	1/2	13	12	305	.66	.30
6251309	089251	6251209	088995	3500	1588	5/8	16	6	152	.81	.37
6251311	▽089275	--	--	3500	1588	5/8	16	12	305	1.15	.52
6251313	089299	6251213	089039	5200	2359	3/4	19	6	152	1.44	.65
6251314	▽089305	6251214	▽089046	5200	2359	3/4	19	9	229	1.75	.79
6251315	089312	6251215	089053	5200	2359	3/4	19	12	305	2.08	.94
6251316	▽089329	--	--	5200	2359	3/4	19	18	457	2.30	1.04
6251317	089336	--	--	5200	2359	3/4	19	24	610	3.05	1.38
6251319	089343	6251219	089084	7200	3266	7/8	22	12	305	2.74	1.24
6251320	▽089350	--	--	7200	3266	7/8	22	18	457	3.00	1.36
6251322	089374	--	--	10000	4536	1	25	12	305	4.10	1.86
6251323	▽089381	--	--	10000	4536	1	25	18	457	4.40	2.00
6251324	▽089398	--	--	10000	4536	1	25	24	610	5.00	2.27
6251327	089404	--	--	15200	6895	1 1/4	32	12	305	6.28	2.85
6251328	▽089411	--	--	15200	6895	1 1/4	32	18	457	9.86	4.48
6251333	▽089442	--	--	21400	9707	1 1/2	38	18	457	11.69	5.31

▽ These items are made to order.

#### ⚠ ADVERTENCIA

Para prevenir la posibilidad de lesiones graves:

- **NO EXCEDA** el límite de carga de trabajo (WLL).
- **NO LA UTILICE** choque o golpee la carga.
- **NO USE** el accesorio si se ve deformado o desgastado.

#### ⚠ WARNING

To prevent the possibility of serious bodily injury:

- **DO NOT EXCEED** the working load limit.
- **DO NOT** shock or impact load.
- **DO NOT USE** if the fitting is visibly distorted or worn.

# Turnbuckle Jaw End, 888-G Drop-forged Carbon Steel

For Turnbuckles		Thread Length				Dimensions													
Dia.		Take Up		B		M		N		P		R		S		U		W	
in.	mm	in.	mm	in.	mm	in.	mm	in.	mm	in.	mm	in.	mm	in.	mm	in.	mm	in.	mm
1/4	6	4	102	2 3/8	60	3 15/16	100	5/8	16	15/32	24	3/16	5	13/32	21	5/8	16	1/4	6
3/8	10	6	152	3 9/16	90	5 5/8	143	13/16	21	9/16	14	1/4	6	1/2	13	7/8	22	5/16	8
1/2	13	6	152	3 3/4	95	6 5/16	160	1 1/16	27	3/4	19	5/16	8	5/8	16	1 3/16	30	3/8	10
1/2	13	12	305	6 3/4	171	9 1/4	235	1 1/16	27	3/4	19	5/16	8	5/8	16	1 3/16	30	3/8	10
5/8	16	6	152	4	102	7 5/16	186	1 3/8	35	15/16	24	7/16	11	3/4	19	1 3/8	35	1/2	13
5/8	16	12	305	7	178	10 5/16	262	1 3/8	35	15/16	24	7/16	11	3/4	19	1 3/8	35	1/2	13
5/8	16	18	457	10	254	13 5/16	338	1 3/8	35	15/16	24	7/16	11	3/4	19	1 3/8	35	1/2	13
3/4	19	6	152	4 1/8	105	7 7/8	200	1 1/2	38	1 3/16	30	15/32	12	15/16	24	1 13/16	46	5/8	16
3/4	19	9	229	5 5/8	143	9 3/8	238	1 1/2	38	1 3/16	30	15/32	12	15/16	24	1 13/16	46	5/8	16
3/4	19	12	305	7 1/8	181	10 7/8	276	1 1/2	38	1 3/16	30	15/32	12	15/16	24	1 13/16	46	5/8	16
3/4	19	18	457	10 3/16	259	13 7/8	352	1 1/2	38	1 3/16	30	15/32	12	15/16	24	1 13/16	46	5/8	16
3/4	19	24	610	13 3/16	335	16 7/8	429	1 1/2	38	1 3/16	30	15/32	12	15/16	24	1 13/16	46	5/8	16
7/8	22	12	305	7 5/16	186	11 11/16	297	1 3/4	44	1 3/8	35	19/32	15	1 1/8	29	2	51	3/4	19
7/8	22	18	457	10 5/16	262	14 11/16	373	1 3/4	44	1 3/8	35	19/32	15	1 1/8	29	2	51	3/4	19
1	25	12	305	7 1/2	191	12 1/2	318	2 1/16	52	1 9/16	40	3/4	19	1 3/16	30	2 3/16	56	7/8	22
1	25	18	457	10 1/2	267	15 1/2	394	2 1/16	52	1 9/16	40	3/4	19	1 3/16	30	2 3/16	56	7/8	22
1	25	24	610	13 1/2	343	18 1/2	470	2 1/16	52	1 9/16	40	3/4	19	1 3/16	30	2 3/16	56	7/8	22
1 1/4	32	12	305	7 11/16	195	13 3/4	349	2 7/16	62	2	51	7/8	22	1 3/4	44	2 7/8	73	1 1/8	29
1 1/4	32	18	457	10 11/16	271	16 3/4	425	2 7/16	62	2	51	7/8	22	1 3/4	44	2 7/8	73	1 1/8	29
1 1/2	38	18	457	10 7/8	276	18 1/8	460	2 13/16	71	2 5/16	59	1 3/32	28	2 1/16	52	3 1/8	79	1 3/8	35



**ADVERTENCIA**

Para prevenir la posibilidad de lesiones graves:

- **NO EXCEDA** el límite de carga de trabajo (WLL).
- **NO LA UTILICE** choque o golpee la carga.
- **NO USE** el accesorio si se ve deformado o desgastado.

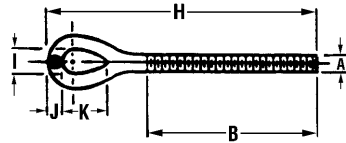


**WARNING**

To prevent the possibility of serious bodily injury:

- **DO NOT EXCEED** the working load limit.
- **DO NOT** shock or impact load.
- **DO NOT USE** if the fitting is visibly distorted or worn.

### Turnbuckle Eye End, 880-G Drop-forged Carbon Steel



- Standard Material: Drop-forged carbon steel
- Standard Finish: Galvanized

Right H. Thread		Left H. Thread		Working Load Limit		Dia.	For Turnbuckle		Weight Each		
Cat. No.	UPC No. 020418	Cat. No.	UPC No. 020418	lb	kg		mm	Take-Up	mm	lb	kg
6251101	088674	--	--	500	227	1/4	6	4	102	.09	.04
6251102	088681	--	--	800	363	5/16	8	4 1/2	114	.13	.06
6251103	088698	6251003	088438	1200	544	3/8	10	6	152	.25	.11
6251105	088704	6251005	088445	2200	998	1/2	13	6	152	.47	.21
6251106	088711	--	--	2200	998	1/2	13	9	229	.55	.25
6251107	088728	6251007	088469	2200	998	1/2	13	12	305	.58	.26
6251109	088735	6251009	088476	3500	1588	5/8	16	6	152	.80	.36
6251110	▽088742	--	--	3500	1588	5/8	16	9	229	.92	.42
--	--	6251013	088513	5200	2359	3/4	19	6	152	1.20	.54
6251115	▽088797	--	--	5200	2359	3/4	19	12	305	1.63	.74
6251116	▽088803	--	--	5200	2359	3/4	19	18	457	1.75	.79
6251122	088858	--	--	10,000	4536	1	25	12	305	3.25	1.48
6251123	▽088865	--	--	10,000	4536	1	25	18	457	3.75	1.70

▽ These items are made to order.

### Turnbuckle Eye End, 880-G Drop-forged Carbon Steel

Dimensions															
Dia.		Take Up		Thread Length		B		H		880-G Eye Dimensions					
in.	mm	in.	mm	in.	mm	in.	mm	in.	mm	in.	mm	in.	mm	in.	mm
1/4	6	4	102	2 3/8	60	3 15/16	100	3/8	10	7/32	6	25/32	20		
5/16	8	4 1/2	114	2 11/16	68	4 3/4	121	15/32	12	9/32	7	15/16	24		
3/8	10	6	152	3 9/16	90	5 7/8	149	9/16	14	11/32	9	1 1/8	29		
1/2	13	6	152	3 3/4	95	6 3/4	171	3/4	19	7/16	11	1 7/16	37		
1/2	13	9	229	5 1/4	133	8 1/4	210	3/4	19	7/16	11	1 7/16	37		
1/2	13	12	305	6 3/4	171	9 3/4	248	3/4	19	7/16	11	1 7/16	37		
5/8	16	6	152	4	102	7 7/16	189	29/32	23	1/2	13	1 3/4	44		
5/8	16	9	229	5 1/2	140	8 15/16	227	29/32	23	1/2	13	1 3/4	44		
3/4	19	6	152	4 1/8	105	8 3/8	213	1 1/32	26	5/8	16	2 1/8	54		
3/4	19	12	305	7 1/8	181	11 3/8	289	1 1/32	26	5/8	16	2 1/8	54		
3/4	19	18	457	10 3/16	259	14 3/8	365	1 1/32	26	5/8	16	2 1/8	54		
1	25	12	305	7 1/2	191	13 1/4	337	1 15/32	37	7/8	22	3	76		
1	25	18	457	10 1/2	267	16 1/4	413	1 15/32	37	7/8	22	3	76		

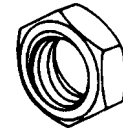
#### ⚠ ADVERTENCIA

- Para prevenir la posibilidad de lesiones graves:
- **NO EXCEDA** el límite de carga de trabajo (WLL).
  - **NO LA UTILICE** choque o golpee la carga.
  - **NO USE** el accesorio si se ve deformado o desgastado.

#### ⚠ WARNING

- To prevent the possibility of serious bodily injury:
- **DO NOT EXCEED** the working load limit.
  - **DO NOT** shock or impact load.
  - **DO NOT USE** if the fitting is visibly distorted or worn.

**Jam Nuts (Lock Nuts) 907-G**



Size		Right Hand Thread		Left Hand Thread		Finish	Packed	Weight per 100 Pcs.	
in.	mm	Cat. No.	UPC No. 020418	Cat. No.	UPC No. 020418			lb	kg
1/4	6	6259001	▽ 091360	6259101	▽ 091469	Galvanized	Bulk	1	0.4
3/8	10	6259003	091384	--	--	Galvanized	Bulk	2	0.9
1/2	13	6259004	▽ 091391	6259104	▽ 091490	Galvanized	Bulk	3	1.3
5/8	16	6259005	091407	6259105	091506	Galvanized	Bulk	5	2.2
3/4	19	6259006	▽ 091414	6259106	091513	Galvanized	Bulk	8	3.6
7/8	22	6259007	091421	6259107	▽ 091520	Galvanized	Bulk	12	5.4
1	25	6259008	091438	6259108	091537	Galvanized	Bulk	18	8.1
1 1/4	32	6259009	091445	6259109	▽ 091544	Galvanized	Bulk	36	16.1

▽ These items are made to order



**ADVERTENCIA**

Para prevenir la posibilidad de lesiones graves:

- **NO EXCEDA** el límite de carga de trabajo (WLL).
- **NO LA UTILICE** choque o golpee la carga.
- **NO USE** el accesorio si se ve deformado o desgastado.



**WARNING**

To prevent the possibility of serious bodily injury:

- **DO NOT EXCEED** the working load limit.
- **DO NOT** shock or impact load.
- **DO NOT USE** if the fitting is visibly distorted or worn.

### Connecting Links

**752-S, G, A Regular**  
**753-S Pear Shaped**  
**Stainless Regular**

READ AND UNDERSTAND THESE WARNINGS AND INSTRUCTIONS BEFORE USING CONNECTED LINKS.

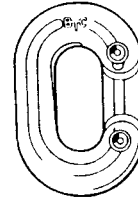
Campbell carbon and alloy steel connecting links are all drop-forged and heat treated. Galvanizing is to ASTM A-153 specification.

Campbell stainless connecting links are all drop-forged and made of 316 Stainless Steel, and have an electro-polished finish.

Connecting links are used to connect two pieces of chain or to connect a fitting to a chain.

#### IMPORTANT: Instructions For Use

1. Make sure the connecting link used is the same size as the components being joined, e.g., a 3/8 in. connecting link is used with 3/8 in. chain.
2. To effectively close the connecting link, peen the prongs (using a ball peen hammer) to fill the hole of the mating half as much as possible.
3. Any assembly made using connecting links should be rated at the working load limit (WLL) of the weakest component.
4. Do not exceed WLL. See table below.
5. The WLL of connecting links is based on a straight line pull. Any side or shock loading will significantly reduce the actual WLL.



**REGULAR  
CONNECTING LINK**



**PEAR SHAPED  
CONNECTING LINK**

#### **WARNING**

- Failure to follow the Instructions For Use below and these warnings may cause death or serious injury.
- Use connecting links only as indicated.
- Do not use connecting links for overhead lifting.
- **Never re-use connecting links.**
- Connecting links must always be inspected for wear, distortion and tightness before use. If worn, distorted or damaged, discard and replace.

#### Working Load Limits (lbs and kg) - Connecting Links

Size		Regular				Pear Shaped	
		Carbon Steel WLL		Alloy WLL		Carbon Steel WLL	
in.	mm	lb	kg	lb	kg	lb	kg
3/16	5	800	363	*		*	
1/4	6	1400	636	*		*	
5/16	8	2000	908	3000	1362	*	
3/8	10	2800	1271	4200	1907	1850	840
7/16	11	3625	1646	5400	2452	*	
1/2	13	4750	2157	7000	3178	3300	1498
5/8	16	7250	3292	10800	4903	5000	2270
3/4	19	10250	4654	15000	6810	7100	3223
7/8	22	12000	5448	18000	8172	9600	4358
1	25	15500	7037	24000	10896	*	
1 1/4	32	24000	10896	*		*	

\* Item not manufactured.

#### **ADVERTENCIA**

Para prevenir la posibilidad de lesiones graves:

- **NO EXCEDA** el límite de carga de trabajo (WLL).
- **NO LA UTILICE** choque o golpee la carga.
- **NO USE** el accesorio si se ve deformado o desgastado.

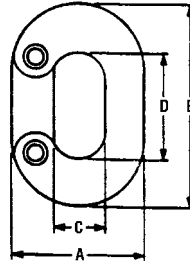
#### **WARNING**

To prevent the possibility of serious bodily injury:

- **DO NOT EXCEED** the working load limit.
- **DO NOT** shock or impact load.
- **DO NOT USE** if the fitting is visibly distorted or worn.

# 752-S, 752-G, 752-A Connecting Links, Carbon Steel and Alloy Steel

- Standard Material: Forged carbon and alloy steel - Heat Treated
- Standard Finish: Self-colored or galvanized
- Design Factor: 4 to 1
- For effective closure peen to fill eye of mating half as much as possible
- Meets design requirements of Federal Specification RR-C-271D, Type II



### Carbon Steel, Heat Treated

Size in. mm	Self Colored		Galvanized		Working Load Limit		Dimensions								Links Per Box	Weight/100	
	Cat. No.	UPC No. 020418	Cat. No.	UPC No. 020418	lb	kg	A		B		C		D			lb	kg
3/16 5	5200304	074653	5200334	074660	800	363	3/4	19	1 1/8	29	5/16	8	5/8	16	20	3	1
1/4 6	5200404	074677	5200434	074684	1400	635	1	25	1 1/2	38	7/16	11	7/8	22	10	6	3
5/16 8	5200504	074691	5200534	074707	2000	907	1 3/16	30	1 3/4	44	1/2	13	1	25	10	10	5
3/8 10	5200604	074714	5200634	074721	2800	1270	1 3/8	35	2 1/8	54	9/16	14	1 1/8	29	10	18	8
7/16 11	5200704	074738	5200734	074745	3625	1644	1 9/16	40	2 3/8	60	5/8	16	1 1/4	32	10	26	12
1/2 13	5200804	074752	5200834	074769	4750	2155	1 23/32	44	2 11/16	68	21/32	17	1 7/16	37	10	38	17
5/8 16	5201004	074790	5201034	074806	7250	3289	2 1/8	54	3 3/8	86	13/16	21	1 7/8	48	10	72	33
3/4 19	5201204	074813	5201234	074820	10250	4649	2 1/2	64	3 7/8	98	31/32	25	2 1/8	54	5	112	51
7/8 22	5201405	074837	5201435	074844	12000	5443	2 15/16	75	4 1/2	114	1 3/16	30	2 1/2	64	Bulk	174	79
1 25	5201605	074851	5201635	074868	15500	7031	3 5/16	84	5	127	1 1/4	32	2 3/4	70	Bulk	240	109
1 1/4 32	5202005	074875	5202035	074882	24000	10886	4	102	6 1/8	156	1 1/2	38	3 1/4	83	Bulk	464	211

### Alloy Steel, Heat Treated

Size in. mm	Self Colored		Working Load Limit		Dimensions								Links Per Box	Weight/100	
	Cat. No.	UPC No. 020418	lb	kg	A		B		C		D			lb	kg
3/16 5	--	--	--	--	3/4	19	1 1/8	29	5/16	8	5/8	16	20	3	1
1/4 6	--	--	--	--	1	25	1 1/2	38	7/16	11	7/8	22	10	6	3
5/16 8	5208505	075001	3000	1361	1 3/16	30	1 3/4	44	1/2	13	1	25	10	10	5
3/8 10	5208605	075018	4200	1905	1 3/8	35	2 1/8	54	9/16	14	1 1/8	29	10	18	8
7/16 11	5208705	075025	5400	2449	1 9/16	40	2 3/8	60	5/8	16	1 1/4	32	10	26	12
1/2 13	5208805	075032	7000	3175	1 23/32	44	2 11/16	68	21/32	17	1 7/16	37	10	38	17
5/8 16	5209005	075049	10800	4899	2 1/8	54	3 3/8	86	13/16	21	1 7/8	48	10	72	33
3/4 19	5209205	075056	15000	6804	2 1/2	64	3 7/8	98	31/32	25	2 1/8	54	5	112	51
7/8 22	5209405	075063	18000	8165	2 15/16	75	4 1/2	114	1 3/16	30	2 1/2	64	Bulk	174	79
1 25	5209605	075070	24000	10886	3 5/16	84	5	127	1 1/4	32	2 3/4	70	Bulk	240	109
1 1/4 32	--	--	--	--	4	102	6 1/8	156	1 1/2	38	3 1/4	83	Bulk	464	211

#### ⚠ ADVERTENCIA

- Para prevenir la posibilidad de lesiones graves:
- **NO EXCEDA** el límite de carga de trabajo (WLL).
  - **NO LA UTILICE** choque o golpee la carga.
  - **NO USE** el accesorio si se ve deformado o desgastado.

#### ⚠ WARNING

- To prevent the possibility of serious bodily injury:
- **DO NOT EXCEED** the working load limit.
  - **DO NOT** shock or impact load.
  - **DO NOT USE** if the fitting is visibly distorted or worn.



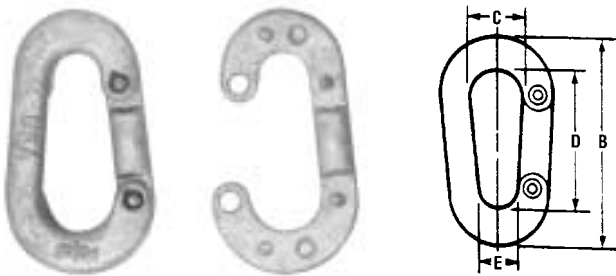
### M-48-ST Connecting Links, Stainless Steel



- Standard Material: Forged Type 316 Stainless Steel
- Standard Finish: Electro-polish
- For effective closure,peen to fill eye of mating half as much as possible

Size in. mm	Cat. No.	UPC No. 020418	Working Load Limit		Dimensions								Weight Each	
			lb	kg	A		B		C		D		lb	g
1/4 6	6403504	169595	600	272	1	25	1 1/2	38	7/16	11	7/8	22	0.07	32
5/16 8	6403505	169601	900	408	1 3/16	30	1 3/4	44	1/2	13	1	25	0.12	54
3/8 9	6403506	094422	1440	653	1 3/8	35	2 1/8	54	9/16	14	1 1/8	29	0.18	82

### 753-S, 753-G Pear Shaped Connecting Links



- Standard Material: Forged carbon and alloy steel - Heat Treated
- Standard Finish: Self-colored or galvanized
- Design Factor: 4 to 1
- For effective closure,peen to fill mating half as much as possible

Size in. mm	Self Colored		Galvanized		Working Load Limit		Dimensions								Weight/ 100	
	Cat. No.	UPC No. 020418	Cat. No.	UPC No. 020418	lb	kg	B		C		D		E		lb	kg
3/8 10	5205604	074905	5205634	074912	1850	839	2 15/16	75	1 3/16	21	2	51	9/16	14	25	11
1/2 13	5205804	074929	5205834	074936	3300	1497	3 5/8	92	1	25	2 1/2	64	1 1/16	17	45	20
5/8 16	5206005	074943	5206035	074950	5000	2268	4 1/4	108	1 1/8	29	2 3/4	70	1 3/16	21	91	41
3/4 19	5206205	074967	5206235	074974	7100	3221	4 7/8	124	1 1/4	32	3 1/8	79	1	25	130	59
7/8 22	5206405	074981	5206435	074998	9600	4355	5 11/16	144	1 1/2	38	3 11/16	94	1 1/4	32	220	100

Size in. mm	Galvanized		Working Load Limit		Dimensions								Weight/ 100	
	Cat. No.	UPC No. 020418	lb	kg	B		C		D		E		lb	kg
3/8 10	5203635	074899	3000	1361	2 15/16	75	1 3/16	21	2	51	9/16	14	25	11
1/2 13	5203835	179822	5000	2268	3 5/8	92	1	25	2 1/2	64	1 1/16	17	45	20
5/8 16	5204035	179839	8000	3629	4 1/4	108	1 1/8	29	2 3/4	70	1 3/16	21	91	41
3/4 19	5204235	179846	11,000	4990	4 7/8	124	1 1/4	32	3 1/8	79	1	25	130	59
7/8 22	5204435	179853	15,000	6804	5 11/16	144	1 1/2	38	3 11/16	94	1 1/4	32	220	100

▽ These items are made to order

#### ⚠ ADVERTENCIA

- Para prevenir la posibilidad de lesiones graves:
- **NO EXCEDA** el límite de carga de trabajo (WLL).
  - **NO LA UTILICE** choque o golpee la carga.
  - **NO USE** el accesorio si se ve deformado o desgastado.

#### ⚠ WARNING

- To prevent the possibility of serious bodily injury:
- **DO NOT EXCEED** the working load limit.
  - **DO NOT** shock or impact load.
  - **DO NOT USE** if the fitting is visibly distorted or worn.

Grab/Slip Hooks

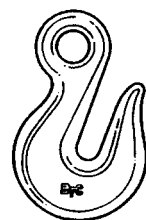
477, 477-A Eye Grab; 473, 473-A Clevis Grab; 474, 474-A Eye Slip; 476, 476-A Clevis Slip

READ AND UNDERSTAND THESE WARNINGS AND INSTRUCTIONS BEFORE USING GRAB AND SLIP HOOKS.

Campbell grab and slip hooks are all drop-forged and heat treated. The alloy eye grab hooks meet the design requirements of Federal Specification RR-C-271.

**IMPORTANT: Instructions For Use**

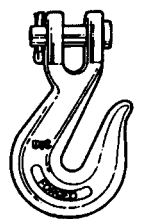
1. These hooks are designed to engage chain and are sized by the material diameter of the chain that they engage. Make sure hook size and chain diameter are compatible before lifting load.
2. Grab hooks are designed to grab a chain link and hold it in place.
3. Slip hooks are designed to allow chain to slip through the hook.
4. Only use genuine Campbell parts when replacing clevis pins and cotter keys.
5. Do not exceed working load limit (WLL). See table below.



**EYE GRAB HOOK**



**EYE SLIP HOOK**



**CLEVIS GRAB HOOK**



**CLEVIS SLIP HOOK**

**WARNING**

- Failure to follow the Instructions For Use below and these warnings may cause death or serious injury.
- Use these hooks only as indicated.
- Never point load a hook.
- Do not use hooks for lifting personnel.
- Hooks must always be inspected for wear, distortion and damage before use. If worn, distorted or damaged, discard and replace.
- Always stand clear of loads being lifted.

**Working Load Limits (lb and kg) — Hooks**

		System 3 & System 4						Alloy							
		Heat Treated				Eye & Clevis Grab, Clevis Slip WLL						Eye & Clevis Grab WLL		Clevis Slip WLL	
in.	mm	lb	kg	lb	kg	lb	kg	lb	kg	lb	kg	lb	kg	lb	kg
1/4	6	2400	1090	2600	1180	3400	1544	4100	1861	4100	1861	4100	1861	4100	1861
5/16	8	3500	1589	3900	1771	4800	2179	5100	2315	5100	2315	5100	2315	5100	2315
3/8	10	4600	2088	5400	2452	6400	2906	7100	3223	7300	3314	7300	3314	7300	3314
7/16	11	5600	2542	7200	3269	8000	3632	10000	4540	10000	4540	10000	4540	10000	4540
1/2	13	7400	3360	9200	4177	10000	4540	12000	5448	13000	5902	13000	5902	13000	5902
5/8	16	10000	4540	11500	5221	14500	6583	18100	8217	20300	9216	20300	9216	20300	9216
3/4	19	-	-	16200	7355	-	-	28300	12848	-	-	-	-	-	-

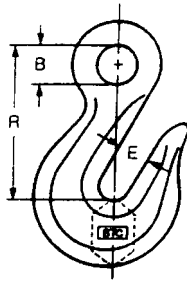
**ADVERTENCIA**

- Para prevenir la posibilidad de lesiones graves:
- **NO EXCEDA** el límite de carga de trabajo (WLL).
  - **NO LA UTILICE** choque o golpee la carga.
  - **NO USE** el accesorio si se ve deformado o desgastado.

**WARNING**

- To prevent the possibility of serious bodily injury:
- **DO NOT EXCEED** the working load limit.
  - **DO NOT** shock or impact load.
  - **DO NOT USE** if the fitting is visibly distorted or worn.

### 477, 477-A Eye Grab Hooks



- Drop-forged micro-alloy steel (system 3 & 4) or alloy steel
- Standard Finish: System 3 & 4 hooks available with blu-krome or self-colored finish. Alloy hooks are heat treated, and painted orange
- Alloy hooks meet the design requirements of Federal Specification RR-C-271
- S/C finish hooks are bulk packed, blu-krome hooks are packed 10 per box
- Order unit is "Each"

#### 477, System 3 & 4

Chain Size	Self-colored (Bulk)		Blu-Krome (10/Box)		Working		Dimensions						Weight		
	in.	mm	Cat. No.	UPC No. 020418	Cat. No.	UPC No. 020418	Load Limit lb	kg	B		E		R		lb
1/4	6	4100415	073090	4000424	072888	2600	1179	17/32	13	11/32	9	1 7/8	48	.27	.12
5/16	8	4100515	073106	4000524	072925	3900	1769	19/32	15	7/16	11	2 3/16	56	.47	.21
3/8	10	4100615	073113	4000624	072963	5400	2449	3/4	19	1/2	13	2 13/32	61	.71	.32
7/16	11	4100715	073120	--	--	7200	3266	25/32	20	19/32	15	2 7/8	73	1.11	.50
1/2	13	4100815	073137	--	--	9200	4173	1 1/8	29	21/32	17	3 3/8	86	1.73	.79
5/8	16	4101015	073144	--	--	11500	5216	1 7/32	31	25/32	20	4 7/32	107	3.23	1.47
3/4	19	4101215	073151	--	--	16200	7348	1 7/16	37	15/16	24	5 1/8	130	6.30	2.86

#### 477-A, Alloy Steel - Heat Treated

Chain Size	Alloy, Orange (Bulk)				Working		Dimensions						Weight		
	in.	mm	Cat. No.	UPC No. 020418	Cat. No.	UPC No. 020418	Load Limit lb	kg	B		E		R		lb
1/4	6	4110415	073175	--	--	4100	1860	17/32	13	11/32	9	1 7/8	48	.27	.12
5/16	8	4110515	073182	--	--	5100	2312	19/32	15	7/16	11	2 3/16	56	.47	.21
3/8	10	4110615	073199	--	--	7100	3221	3/4	19	1/2	13	2 13/32	61	.71	.32
7/16	11	4110715	073205	--	--	10000	4536	25/32	20	19/32	15	2 7/8	73	1.11	.50
1/2	13	4110815	073212	--	--	12000	5443	1 1/8	29	21/32	17	3 3/8	86	1.73	.79
5/8	16	4111015	073229	--	--	18100	8210	1 7/32	31	25/32	20	4 7/32	107	3.23	1.47
3/4	19	4111215	073236	--	--	28300	8237	1 7/16	37	15/16	24	5 1/8	130	6.30	2.86



#### ADVERTENCIA

Para prevenir la posibilidad de lesiones graves:

- **NO EXCEDA** el límite de carga de trabajo (WLL).
- **NO LA UTILICE** choque o golpee la carga.
- **NO USE** el accesorio si se ve deformado o desgastado.



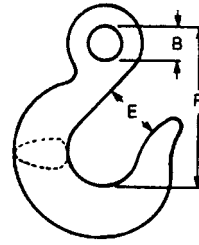
#### WARNING

To prevent the possibility of serious bodily injury:

- **DO NOT EXCEED** the working load limit.
- **DO NOT** shock or impact load.
- **DO NOT USE** if the fitting is visibly distorted or worn.

474, 474-A Eye Slip Hooks

- Drop-forged micro-alloy steel (system 3 & 4) or alloy steel
- Standard Finish: System 3 & 4 hooks available with blu-krome or self-colored finish. Alloy hooks are heat treated with a self-colored finish
- Design factor: Carbon hook is 4 to 1. Alloy hook is 3-1/2 to 1
- S/C hooks are bulk packed, blu-krome hooks are packed 10 per box
- Order unit is "Each"



474, System 3 & 4

Chain Size	Self-colored (Bulk) Cat. No.	UPC No. 020418	Blu-Krome (10/Box) Cat. No.	UPC No. 020418	Working Load Limit		B		Dimensions E		R		Weight Each	
					lb	kg	in.	mm	in.	mm	in.	mm	lb	kg
1/4	4300405	073489	4200424	073281	2400	1089	17/32	13	15/16	24	29/16	65	.44	0.20
5/16	4300505	073496	4200524	073328	3500	1588	23/32	18	1	25	23/4	70	.56	0.25
3/8	4300605	073502	4200624	073366	4600	2087	11/16	17	1 1/4	32	3 1/4	83	1.00	.045
7/16	4300705	073519	--	--	5600	2540	3/4	19	1 1/2	38	3 7/8	98	1.80	0.82
1/2	4300805	073526	--	--	7400	3357	7/8	22	1 3/4	44	4 5/16	110	2.60	1.18
5/8	4301005	073533	--	--	10000	4536	1 1/16	27	2	51	5	127	4.10	1.86

474-A, Alloy Steel - Heat Treated

Chain Size	Alloy, Orange (Bulk) Cat. No.	UPC No. 020418	Cat. No.	UPC No. 020418	Working Load Limit		B		Dimensions E		R		Weight Each	
					lb	kg	in.	mm	in.	mm	in.	mm	lb	kg
1/4	4310415	073540	--	--	3400	1542	17/32	13	15/16	24	29/16	65	.44	0.20
5/16	4310515	073557	--	--	4800	2177	23/32	18	1	25	23/4	70	.56	0.25
3/8	4310615	073564	--	--	6400	2903	11/16	17	1 1/4	32	3 1/4	83	1.00	.045
7/16	4310715	073571	--	--	8000	3629	3/4	19	1 1/2	38	3 7/8	98	1.80	0.82
1/2	4310815	073588	--	--	10000	4536	7/8	22	1 3/4	44	4 5/16	110	2.60	1.18
5/8	4311015	073595	--	--	14500	6577	1 1/16	27	2	51	5	127	4.10	1.86

**ADVERTENCIA**

Para prevenir la posibilidad de lesiones graves:

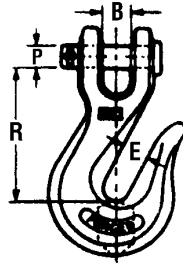
- **NO EXCEDA** el límite de carga de trabajo (WLL).
- **NO LA UTILICE** choque o golpee la carga.
- **NO USE** el accesorio si se ve deformado o desgastado.

**WARNING**

To prevent the possibility of serious bodily injury:

- **DO NOT EXCEED** the working load limit.
- **DO NOT** shock or impact load.
- **DO NOT USE** if the fitting is visibly distorted or worn.

### Clevis Grab Hooks 473, 473-A



- Standard Material: Drop-forged carbon steel steel (system 3 & 4) or alloy steel
- Standard Finish: System 3 & 4 hooks available with blu-krome or self-colored finish. Alloy hooks are heat treated, and painted orange and stamped "Alloy"
- S/C finish hooks are bulk packed, blu-krome hooks are available packed 10 per box or individually bagged and sold in shelf packs of 10
- Order unit is "Each"

#### 473, System 3 & 4

Chain Size in. mm	Self-colored (Bulk)		Blu-Krome (10/Box)		Blu-Krome, Bagged		Working		Dimensions								Weight Each		
	Cat. No.	UPC No. 020418	Cat. No.	UPC No. 020418	Cat. No.	UPC No. 020418	Load Limit lb	kg	B in.	mm	E in.	mm	P in.	mm	R in.	mm	lb	kg	
1/4	6	4500405	073885	4500424	073892	B5950424	154898	2600	1179	3/8	10	1 1/32	9	5/16	8	1 23/32	44	0.32	0.15
5/16	8	4500505	073922	4500524	073939	B5950524	154904	3900	1769	15/32	12	7/16	11	3/8	10	1 31/32	50	0.59	0.27
3/8	10	4500605	073960	4500624	073977	B5950624	156564	5400	2449	17/32	13	1/2	13	7/16	11	2 1/4	57	0.92	0.42
7/16	11	4500705	074004	--	--	--	--	7200	3266	19/32	15	19/32	15	1/2	13	2 5/8	67	1.32	0.60
1/2	13	4500805	074042	4500824	074059	--	--	9200	4173	21/32	17	2 1/32	17	9/16	13	3 1/64	77	2.00	0.91
5/8	16	4501005	074073	--	--	--	--	11500	5216	13/16	21	25/32	20	3/4	19	3 25/32	96	3.90	1.77
3/4	19	4501205	074097	--	--	--	--	16200	7348	15/16	24	15/16	24	13/16	21	4 25/32	121	6.12	2.78

#### 473-A, Alloy Steel - Heat Treated

Chain Size in. mm	Alloy, Orange (Bulk)						Working		Dimensions								Weight Each	
	Cat. No.	UPC No. 020418	Cat. No.	UPC No. 020418	Cat. No.	UPC No. 020418	Load Limit lb	kg	B in.	mm	E in.	mm	P in.	mm	R in.	mm	lb	kg
1/4	6	4503315	074103	--	--	--	4100	1860	3/8	10	1 1/32	9	5/16	8	1 23/32	44	0.32	0.15
5/16	8	4503415	074110	--	--	--	5100	2313	15/32	12	7/16	11	3/8	10	1 31/32	50	0.59	0.27
3/8	10	4503515	074127	--	--	--	7100	3221	17/32	13	1/2	13	7/16	11	2 1/4	57	0.92	0.42
7/16	11	4503615	074134	--	--	--	10000	4536	19/32	15	19/32	15	1/2	13	2 5/8	67	1.32	0.60
1/2	13	4503715	074141	--	--	--	12000	5443	21/32	17	2 1/32	17	9/16	13	3 1/64	77	2.00	0.91
5/8	16	4503815	074158	--	--	--	18100	8210	13/16	21	25/32	20	3/4	19	3 25/32	96	3.90	1.77
3/4	19	4503915	074165	--	--	--	28300	12837	15/16	24	15/16	24	13/16	21	4 25/32	121	6.12	2.78

#### ⚠ ADVERTENCIA

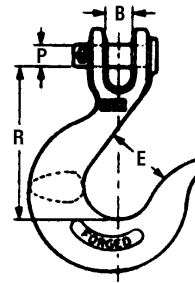
- Para prevenir la posibilidad de lesiones graves:
- **NO EXCEDA** el límite de carga de trabajo (WLL).
  - **NO LA UTILICE** choque o golpee la carga.
  - **NO USE** el accesorio si se ve deformado o desgastado.

#### ⚠ WARNING

- To prevent the possibility of serious bodily injury:
- **DO NOT EXCEED** the working load limit.
  - **DO NOT** shock or impact load.
  - **DO NOT USE** if the fitting is visibly distorted or worn.

**Clevis Slip Hooks 476, 476-A**

- Standard Material: Drop-forged carbon steel steel (system 3 & 4) or alloy steel
- Standard Finish: System 3 & 4 hooks available with blu-krome or self-colored finish. Alloy hooks are heat treated, and painted orange and stamped "AH"
- S/C finish hooks are bulk packed, blu-krome hooks are available packed 10 per box or individually bagged and sold in shelf packs of 10\*\*
- Order unit is "Each"
- Design Factor: Carbon steel hooks is 4 to 1. Alloy steel hooks is 3-1/2 to 1



**476, System 3 & 4**

Chain Size	Self-colored (Bulk) Cat. No.	UPC No. 020418	Blu-Krome (10/Box) Cat. No.	UPC No. 020418	Blu-Krome, Bagged Cat. No.	UPC No. 020418	Working		Dimensions								Weight Each		
							Load Limit lb	kg	B in.	mm	E in.	mm	P in.	mm	R in.	mm	lb	kg	
* 1/4	6	4400405	073618	4400424	073625	B5951425	156595	2600	1179	3/8	10	15/16	24	5/16	8	1 <sup>23</sup> / <sub>32</sub>	44	0.75	0.34
* 5/16	8	4400505	073656	4400524	073663	B5951525	156601	3900	1769	7/16	11	1 1/16	27	3/8	10	3	76	1.00	0.45
* 3/8	10	4400605	073694	4400624	073700	B5951625**	156618	5400	2449	1/2	13	1 1/4	32	7/16	11	3 <sup>13</sup> / <sub>32</sub>	87	1.40	0.64
7/16	11	4400705	073731	4400724	073748	--	--	7200	3266	9/16	13	1 1/2	38	1/2	13	3 <sup>5</sup> / <sub>8</sub>	92	2.00	0.91
1/2	13	4400805	073779	4400824	073786	--	--	9200	4173	5/8	16	1 3/4	44	9/16	13	4 <sup>3</sup> / <sub>32</sub>	104	3.10	1.41
5/8	16	4401005	073809	--	--	--	--	11500	5216	3/4	19	2	51	3/4	19	4 <sup>13</sup> / <sub>16</sub>	122	5.20	2.36

\* Hooks have drilled hole for latch kit. See page 104 for latch kits.

\*\* Shelf pack is 5

**476-A, Alloy Steel - Heat Treated**

Chain Size	Alloy, Orange (Bulk) Cat. No.	UPC No. 020418	Cat. No.	UPC No. 020418	Cat. No.	UPC No. 020418	Working		Dimensions								Weight Each		
							Load Limit lb	kg	B in.	mm	E in.	mm	P in.	mm	R in.	mm	lb	kg	
* 1/4	6	4403315	073816	--	--	--	--	4100	1860	3/8	10	15/16	24	5/16	8	1 <sup>23</sup> / <sub>32</sub>	44	0.75	0.34
* 5/16	8	4403415	073823	--	--	--	--	5100	2313	7/16	11	1 1/16	27	3/8	10	3	76	1.00	0.45
* 3/8	10	4403515	073830	--	--	--	--	7100	3221	1/2	13	1 1/4	32	7/16	11	3 <sup>13</sup> / <sub>32</sub>	87	1.40	0.64
7/16	11	4403615	073847	--	--	--	--	10000	4536	9/16	13	1 1/2	38	1/2	13	3 <sup>5</sup> / <sub>8</sub>	92	2.00	0.91
1/2	13	4403715	073854	--	--	--	--	13000	5897	5/8	16	1 3/4	44	9/16	13	4 <sup>3</sup> / <sub>32</sub>	104	3.10	1.41
5/8	16	4403815	073861	--	--	--	--	20300	9208	3/4	19	2	51	3/4	19	4 <sup>13</sup> / <sub>16</sub>	122	5.20	2.36

\* Hooks have drilled hole for latch kit. See page 104 for latch kits.



**ADVERTENCIA**

- Para prevenir la posibilidad de lesiones graves:
- **NO EXCEDA** el límite de carga de trabajo (WLL).
  - **NO LA UTILICE** choque o golpee la carga.
  - **NO USE** el accesorio si se ve deformado o desgastado.



**WARNING**

- To prevent the possibility of serious bodily injury:
- **DO NOT EXCEED** the working load limit.
  - **DO NOT** shock or impact load.
  - **DO NOT USE** if the fitting is visibly distorted or worn.