

# High Pressure Fittings *Selection & dimensions*

Shown: FZ-2052, FZ-2054, FZ-2023



**Fitting are used to connect all cylinders, components, power sources, tubes, gauges and hoses in a hydraulic system. Enerpac fittings provide flexible, safe and leak-free connections.**

**Multiple hydraulic line connections are easily installed with Enerpac fittings and manifolds.**

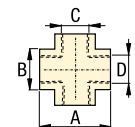
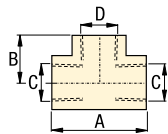
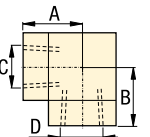
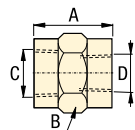
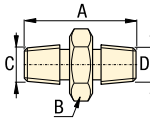
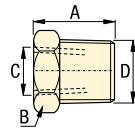
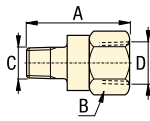


## Proper connection for hydraulic components

- Male and female BSPP, NPTF and SAE threaded fittings in common sizes allow easy connection of all components.
- BFZ and FZ-1000 models are 700 bar maximum pressure
- FZ-2000 models are 350 bar maximum pressure.

## Product selection

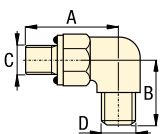
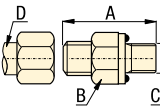
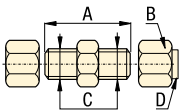
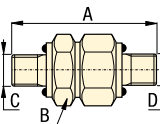
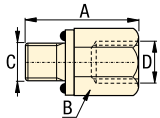
From	To	Maximum pressure bar	Model number	Dimensions			
				A mm	B mm	C	D
<b>▼ Adapters</b>							
G 1/4"	1/8" NPTF	700	<b>BFZ-16411</b>	35	19	1/4"-18 NPTF	G 1/4"
G 1/4"	1/8" NPTF	700	<b>BFZ-16421</b>	31	19	1/8"-27 NPTF	G 1/4"
G 3/8"	1/4" NPTF	700	<b>BFZ-16323</b>	43	24	1/4"-27 NPTF	G 3/8"
G 3/8"	3/8" NPTF	700	<b>BFZ-16324</b>	43	24	3/8"-27 NPTF	G 3/8"
1/4" NPTF	1/8" NPTF	700	<b>FZ-1642</b>	31	19	1/8"-27 NPTF	1/4"-18 NPTF
3/8" NPTF	1/4" NPTF	700	<b>FZ-1055</b>	37	24	1/4"-18 NPTF	3/8"-18 NPTF
1/2" NPTF	1/4" NPTF	700	<b>FZ-1633</b>	43	29	1/4"-18 NPTF	1/2"-14 NPTF
1/2" NPTF	3/8" NPTF	700	<b>FZ-1634</b>	43	29	3/8"-18 NPTF	1/2"-14 NPTF
SAE #4	1/4" NPTF	350	<b>FZ-2007</b>	29	19	7/16"-20 UN	1/4"-18 NPTF
SAE #4	1/8" NPTF	350	<b>FZ-2008</b>	25	14	7/16"-20 UN	1/8"-27 NPTF
SAE #4	SAE #2	350	<b>FZ-2022</b>	29	17	5/16"-24 UN	7/16"-20 UN
<b>▼ Reducers</b>							
1/4" NPTF	3/8" NPTF	700	<b>FZ-1630</b>	22	22	1/4"-18 NPTF	3/8"-18 NPTF
1/4" NPTF	1/2" NPTF	700	<b>FZ-1661</b>	28	22	1/4"-18 NPTF	1/2"-14 NPTF
SAE #6	SAE #8	350	<b>FZ-2029</b>	35	27	3/4"-16 UN	9/16"-18 UN
3/8" NPTF	G 1/4"	700	<b>BFZ-16301</b>	19	19	G 1/4"	3/8"-18 NPTF
<b>▼ Male Nipples</b>							
1/4" NPTF	1/4" NPTF	700	<b>FZ-1608</b>	37	16	1/4"-18 NPTF	1/4"-18 NPTF
3/8" NPTF	3/8" NPTF	700	<b>FZ-1617</b>	37	19	3/8"-18 NPTF	3/8"-18 NPTF
3/8" NPTF	3/8" NPTF	700	<b>FZ-1619</b>	51	19	3/8"-18 NPTF	3/8"-18 NPTF
3/8" NPTF	G 1/4"	700	<b>BFZ-305</b>	36	19	3/8"-18 NPTF	G 1/4"
<b>▼ Female Connectors</b>							
1/4" NPTF	1/4" NPTF	700	<b>FZ-1605</b>	29	19	1/4"-18 NPTF	1/4"-18 NPTF
3/8" NPTF	1/4" NPTF	700	<b>FZ-1615</b>	29	22	3/8"-18 NPTF	1/4"-18 NPTF
3/8" NPTF	3/8" NPTF	700	<b>FZ-1614</b>	29	22	3/8"-18 NPTF	3/8"-18 NPTF
1/2" NPTF	3/8" NPTF	700	<b>FZ-1625</b>	38	29	1/2"-14 NPTF	3/8"-18 NPTF
<b>▼ Elbows</b>							
1/4" NPTF	1/4" NPTF	700	<b>FZ-1638</b>	23	19	1/4"-18 NPTF	1/4"-18 NPTF
3/8" NPTF	3/8" NPTF	700	<b>FZ-1610</b>	26	22	3/8"-18 NPTF	3/8"-18 NPTF
<b>▼ Tee</b>							
1/4" NPTF	1/4" NPTF	700	<b>FZ-1637</b>	45	19	1/4"-18 NPTF	1/4"-18 NPTF
3/8" NPTF	3/8" NPTF	700	<b>FZ-1612</b>	52	22	3/8"-18 NPTF	3/8"-18 NPTF
<b>▼ Cross</b>							
3/8" NPTF	3/8" NPTF	700	<b>FZ-1613</b>	52	7/8"	3/8"-18 NPTF	3/8"-18 NPTF



 **Product selection**

From	To	Maximum pressure bar	Model number	Dimensions			
				A mm	B mm	C	D
<b>▼ Adapters</b>							
1/8" NPTF	SAE #4	350	<b>FZ-2075</b>	27	17	1/8"-27 NPTF	1/4"-18 NPTF
1/4" NPTF	SAE #4	350	<b>FZ-2042</b>	33	17	1/4"-18 NPTF	7/16"-20 UN
1/4" NPTF	G 1/4"	700	<b>BFZ-16411</b>	35	19	1/4"-18 NPTF	G 1/4"
SAE #4	1/8" NPTF	350	<b>FZ-2008</b>	25	14	7/16"-20 UN	1/8"-27 NPTF
SAE #4	1/4" NPTF	350	<b>FZ-2007</b>	29	19	7/16"-20 UN	1/4"-18 NPTF
SAE #2	SAE #4	350	<b>FZ-2022</b>	26	14	5/16"-24 UN	7/16"-20 UN
SAE #6	1/4" NPTF	350	<b>FZ-2056</b>	29	19	9/16"-18 UN	1/4"-18 NPTF
SAE #8	1/4" NPTF	350	<b>FZ-2067</b>	29	22	3/4"-16 UN	1/4"-18 NPTF
SAE #8	3/8" NPTF	350	<b>FZ-2069</b>	33	22	3/4"-16 UN	3/8"-18 NPTF
G 1/8"	1/8" NPTF	350	<b>FZ-2055</b>	25	16	G 1/8"	1/8"-27 NPTF
G 1/8"	1/4" NPTF	350	<b>FZ-2060</b>	33	19	G 1/8"	1/4"-18 NPTF
G 1/8"	SAE #4	350	<b>FZ-2066</b>	25	17	G 1/8"	7/16"-20 UN
G 1/4"	1/4" NPTF	350	<b>FZ-2023</b>	33	19	G 1/4"	1/4"-18 NPTF
G 1/4"	SAE #4	350	<b>FZ-2065</b>	28	19	G 1/4"	7/16"-20 UN
<b>▼ Straight union</b>							
SAE #4	SAE #4	350	<b>FZ-2005</b>	32	14	7/16"-20 UN	7/16"-20 UN
SAE #6	SAE #6	350	<b>FZ-2028</b>	36	17	9/16"-18 UN	9/16"-18 UN
SAE #8	SAE #8	350	<b>FZ-2040</b>	40	22	3/4"-16 UN	3/4"-16 UN
<b>▼ Straight union to tube ends</b>							
ø 1/4"	ø 1/4"	350	<b>FZ-2033 *</b>	35	13	7/16"-20 UN	ø 1/4"
ø 1/4"	ø 1/4"	350	<b>FZ-2013 **</b>	52	13	7/16"-20 UN	ø 1/4"
<b>▼ Adaptors to tube end</b>							
1/8" NPTF	ø 1/4"	350	<b>R-1054 *</b>	31	13	1/8"-27 NPTF	ø 1/4"
1/4" NPTF	ø 1/4"	350	<b>FZ-2020 *</b>	36	14	1/4"-18 NPTF	ø 1/4"
1/4" NPTF	ø 3/8"	350	<b>FZ-2072 *</b>	36	16	1/4"-18 NPTF	ø 3/8"
1/4" NPTF	ø 1/4"	350	<b>FZ-2012 **</b>	34	14	1/4"-18 NPTF	ø 1/4"
3/8" NPTF	ø 1/4"	350	<b>FZ-2061 *</b>	37	19	3/8"-18 NPTF	ø 1/4"
3/8" NPTF	ø 3/8"	350	<b>FZ-2068 *</b>	37	19	3/8"-18 NPTF	ø 3/8"
SAE #2	ø 1/4"	350	<b>FZ-2025 *</b>	26	14	5/16"-24 UN	ø 1/4"
SAE #4	ø 1/4"	350	<b>FZ-2019 *</b>	32	14	7/16"-20 UN	ø 1/4"
SAE #4	ø 1/4"	350	<b>FZ-2001 **</b>	29	14	7/16"-20 UN	ø 1/4"
SAE #6	ø 1/4"	350	<b>FZ-2059 *</b>	33	17	9/16"-18 UN	ø 1/4"
SAE #8	ø 1/4"	350	<b>FZ-2039 *</b>	35	22	3/4"-16 UN	ø 1/4"
SAE #8	ø 3/8"	350	<b>FZ-2070 *</b>	35	22	3/4"-16 UN	ø 3/8"
G 1/8"	ø 1/4"	350	<b>FZ-2053 *</b>	39	14	G 1/8"	ø 1/4"
G 1/4"	ø 1/4"	350	<b>FZ-2054 *</b>	35	19	G 1/4"	ø 1/4"
G 1/4"	ø 3/8"	350	<b>FZ-2064 *</b>	35	19	G 1/4"	ø 3/8"
<b>▼ Elbow to tube end</b>							
1/8" NPTF	ø 1/4"	350	<b>FZ-2074 *</b>	20	11	1/8"-27 NPTF	ø 1/4"
1/4" NPTF	ø 1/4"	350	<b>FZ-2073 *</b>	28	14	1/4"-18 NPTF	ø 1/4"
1/4" NPTF	ø 1/4"	350	<b>FZ-2076 **</b>	26	14	1/4"-18 NPTF	ø 1/4"
1/4" NPTF	ø 3/8"	350	<b>FZ-2081 *</b>	28	14	1/4"-18 NPTF	ø 3/8"
3/8" NPTF	ø 1/4"	350	<b>FZ-2082 *</b>	31	19	3/8"-18 NPTF	ø 1/4"
3/8" NPTF	ø 3/8"	350	<b>FZ-2083 *</b>	31	14	3/8"-18 NPTF	ø 3/8"
SAE #2	ø 1/4"	350	<b>FZ-2024 *</b>	23	11	5/16"-24 UN	ø 1/4"
SAE #4	ø 1/4"	350	<b>FZ-2035 *</b>	26	14	7/16"-20 UN	ø 1/4"
SAE #4	ø 1/4"	350	<b>FZ-2002 **</b>	26	14	7/16"-20 UN	ø 1/4"
SAE #8	ø 3/8"	350	<b>FZ-2071 *</b>	37	22	3/4"-16 UN	ø 3/8"
G 1/8"	ø 1/4"	350	<b>FZ-2051 *</b>	26	14	G 1/8"	ø 1/4"
G 1/4"	ø 1/4"	350	<b>FZ-2052 *</b>	32	19	G 1/4"	ø 1/4"
ø 1/4"	ø 1/4"	350	<b>FZ-2014 **</b>	23	14	ø 1/4"	ø 1/4"

\* Flared  
\*\* Flareless



Pressure: 0 - 350 / 700 bar

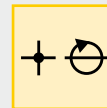
Threads: NPTF, BSPP, SAE

For tubing: ø 1/4 - 3/8", 8 mm

**E** Acoplamientos

**F** Raccords

**D** Verschraubungen



 **Options**

**Gauges and accessories**

 190 ▶



**Hoses, couplers**

 192 ▶



**Hydraulic oil, manifolds**

 193 ▶



 **Important**

**Do not exceed the maximum pressure.**

**Use fittings and tubing in high cycle applications and areas having excessive heat or weld splatter.**

**To seal NPT threads use anaerobic thread sealers or Teflon paste. Apply Teflon tape one thread from the end of the fitting, to prevent it from winding up in the hydraulic system.**

■ *High pressure hydraulic fittings allow connection of many components with minimum effort.*

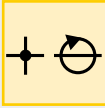


Pressure: 0 - 350 / 700 bar

Threads: BSPP, SAE

For tubing:  $\varnothing 1/4 - 3/8'' - 8 \text{ mm}$

- E** Acoplamiento
- F** Raccords
- D** Verschraubungen



## Options

### Gauges and accessories

190 ▶



### Hoses, couplers

192 ▶



### Hydraulic oil, manifolds

193 ▶

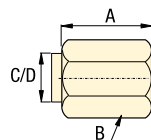
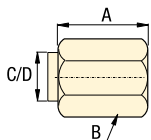
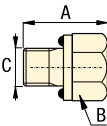
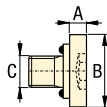
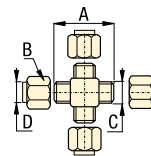
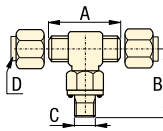
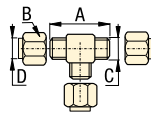
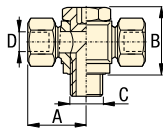
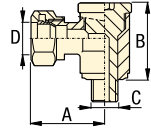


## Important

Do not exceed the maximum pressure.

Use fittings and tubing in high cycle applications and areas having excessive heat or weld splatter.

Multiple hydraulic line connections are easily installed with Enerpac fittings and manifolds.



## Product selection

From	To	Maximum pressure bar	Model number	Dimensions			
				A mm	B mm	C	D
<b>▼ Swivel banjo BSPP to tube</b>							
G 1/4"	$\varnothing 8$	700	<b>BFZ-307</b>	29	19	G 1/4"	$\varnothing 8$
<b>▼ Swivel T-banjo BSPP to tube</b>							
G 1/4"	$\varnothing 8$	700	<b>BFZ-309</b>	29	19	G 1/4"	$\varnothing 8$
<b>▼ Union tee</b>							
$\varnothing 1/4''$	$\varnothing 1/4''$	350	<b>FZ-2015 **</b>	45	14	7/16"-20 UN	$\varnothing 1/4''$
$\varnothing 1/4''$	$\varnothing 1/4''$	350	<b>FZ-2021 *</b>	45	14	7/16"-20 UN	$\varnothing 1/4''$
<b>▼ Branch tee</b>							
SAE #4	$\varnothing 1/4''$	350	<b>FZ-2036 *</b>	45	14	7/16"-20 UN	$\varnothing 1/4''$
SAE #4	$\varnothing 1/4''$	350	<b>FZ-2004 **</b>	45	14	7/16"-20 UN	$\varnothing 1/4''$
<b>▼ Union cross</b>							
$\varnothing 1/4''$	$\varnothing 1/4''$	350	<b>FZ-2034 *</b>	45	14	7/16"-20 UN	$\varnothing 1/4''$
$\varnothing 1/4''$	$\varnothing 1/4''$	350	<b>FZ-2016 **</b>	45	14	7/16"-20 UN	$\varnothing 1/4''$
<b>▼ SAE plug</b>							
SAE #4	-	350	<b>FZ-2006</b>	3	14	7/16"-20 UN	-
SAE #6	-	350	<b>FZ-2003</b>	3	17	9/16"-20 UN	-
<b>▼ SAE hexagon plug</b>							
SAE #8	-	350	<b>FZ-2041</b>	20	22	3/4"-16 UN	-
<b>▼ Nut and Sleeve for tubing</b>							
$\varnothing 1/4''$	-	350	<b>FZ-2037 *</b>	16	14	37°	$\varnothing 1/4''$
<b>▼ Cap for tubing</b>							
$\varnothing 1/4''$	-	350	<b>FZ-2038 *</b>	16	14	37°	$\varnothing 1/4''$
$\varnothing 1/4''$	-	350	<b>FZ-2017 **</b>	15	14	$\varnothing 1/4''$	$\varnothing 1/4''$
$\varnothing 3/8''$	-	350	<b>FZ-2011 *</b>	19	17	37°	$\varnothing 3/8''$

\* Flared

\*\* Flareless