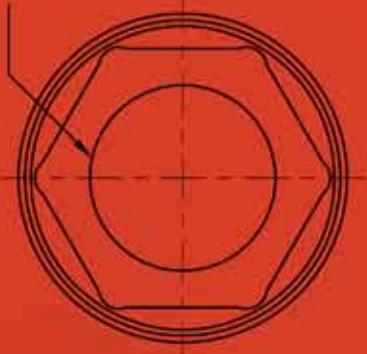


# SPECIALTY & GENERAL PURPOSE TOOLS



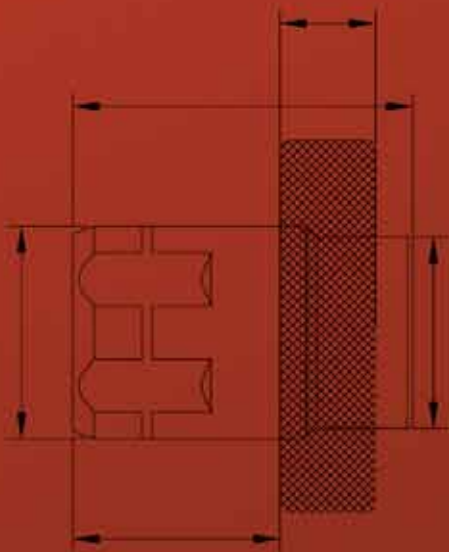
## Specialty Tools

Oil Drain Plug Sockets  
Serpentine Belt Tool  
Hooks and Picks

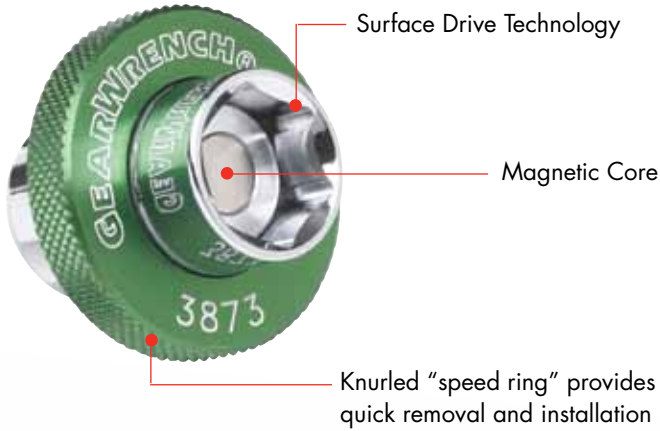
Scrapers  
Door Panel Removers  
Trim Pad Tool

## General Purpose Tools

Tape Measure  
Flashlight  
Gloves



**OIL DRAIN  
PLUG SOCKETS**



Can be used with Pass-Thru® Ratchets Featuring GearRatchet™ handles, or standard 3/8" Drive ratchets

SPECIALTY & GENERAL



Products are covered by one or more of the following patents:

- US 7,159,491
- US 7,658,132

**3680 - 15 Pc. Serpentine Belt Tool Set**

Item No.	Description
3680-71	Long Bar
3680-72	GearWrench® Special Ratcheting Wrench
3680-73	3/8" Adapter
3680-74	1/2" Adapter
3680-75	3/4" Adapter
3680-76	6 Pt. 13 mm Socket
3680-77	6 Pt. 14 mm Socket
3680-78	6 Pt. 15 mm Socket
3680-79	6 Pt. 16 mm Socket
3680-80	6 Pt. 17 mm Socket
3680-81	6 Pt. 18 mm Socket
3680-82	6 Pt. 19 mm Socket
3680-83	13 mm Crowfoot
3680-84	14 mm Crowfoot
3680-85	15 mm Crowfoot



**3870 - 7 Pc. Magnetic Oil Drain Plug Socket Set**

Item No.	Description
235080GR	3/8" (20 mm) GearRatchet® Handle
3872	13 mm Magnetic Oil Drain Plug Socket
3873	14 mm Magnetic Oil Drain Plug Socket
3874	15 mm Magnetic Oil Drain Plug Socket
3875	16 mm Magnetic Oil Drain Plug Socket
3876	17 mm Magnetic Oil Drain Plug Socket
3877	19 mm Magnetic Oil Drain Plug Socket



**3871 - 6 Pc. Magnetic Oil Drain Plug Socket Set**

Item No.	Description
3872	13 mm Magnetic Oil Drain Plug Socket
3873	14 mm Magnetic Oil Drain Plug Socket
3874	15 mm Magnetic Oil Drain Plug Socket
3875	16 mm Magnetic Oil Drain Plug Socket
3876	17 mm Magnetic Oil Drain Plug Socket
3877	19 mm Magnetic Oil Drain Plug Socket



SETS  
SPECIALTY & GENERAL



**Open Stock - Magnetic Oil Drain Plug Sockets**

Item No.	Description
3872	13 mm Magnetic Oil Drain Plug Socket
3873	14 mm Magnetic Oil Drain Plug Socket
3874	15 mm Magnetic Oil Drain Plug Socket
3875	16 mm Magnetic Oil Drain Plug Socket
3876	17 mm Magnetic Oil Drain Plug Socket
3877	19 mm Magnetic Oil Drain Plug Socket



**84000 - 7 Pc. Hook & Pick Set**

Item No.	Description
84001	5" Cotter Pin Puller
84002	4" Hose Pick Puller
84003	4-1/2" Awl
84004	3-1/8" Mini Full Hook
84005	3-1/8" 90° Mini Hook
84006	3-1/8" Straight Mini Hook
84007	3-1/8" Mini Offset Hook



**84040 - 4 Pc. Mini Hook & Pick Set**

Item No.	Description
84004	3-1/8" Mini Full Hook
84005	3-1/8" 90° Mini Hook
84006	3-1/8" Straight Mini Hook
84007	3-1/8" Mini Offset Hook

SPECIALTY & GENERAL OPEN STOCK

**84001 - 5" Cotter Pin Puller**

- Good for seal pick and other general cleaning projects including cotter pins.
- Overall Length 9.50", Weight 0.25 lbs.



**84002 - 4" Hose Pick Puller**

- Good for hose removal, spring clamps or other prying.
- Overall Length 8", Weight 0.20 lbs.



**84003 - 4-1/2" Awl**

- Use as scratch awl or hole punch.
- Overall Length 9.50", Weight 0.20 lbs.



**84004 - 3-1/8" Mini Full Hook**

- Good for hooking springs and other objects.
- Small size for tight access areas.
- Overall Length 6.50", Weight 0.05 lbs.



**84005 - 3-1/8" 90° Mini Hook**

- Use for seal pick removal.
- Overall Length 6.50", Weight 0.05 lbs.



**84006 - 3-1/8" Straight Mini Hook**

- Good to use as hole punch and mini scratch awl.
- Overall Length 6.50", Weight 0.05 lbs.



**84007 - 3-1/8" Mini Offset Hook**

- Use for seals and delicate cleaning applications.
- Overall Length 6.50", Weight 0.05 lbs.





**84070 - 2 Pc. Scraper Set**

Item No.	Description
84071	1" Reverse Scraper
84072	1" Offset Scraper



**84080 - 4 Pc. Scraper Set**

Item No.	Description
84081	1/4" x 8" Scraper
84082	1/2" x 8" Scraper
84083	1" x 8" Scraper
84084	1" x 3-3/4" Scraper



**84060 - 4 Pc. Door Panel Kit**

Item No.	Description
84061	20" Door Panel Remover
84063	Door Panel Remover - Square
84064	Door Panel Remover - V
84065	Trim Pad Tool



**84062 - 10" Door Panel Remover - U**



**84050 - 4 Pc. Door Pad and Panel Removal Kit**

Item No.	Description
84051	4" V-Notch Puller
84052	4" Square Notch Puller
84053	4" Scraper
84054	4" Curved Blade V-Notch Puller

**84051 - 4" V-Notch Puller**

- Minimize damage on door panels and other interior auto applications.
- Overall Length 8.63", Weight 0.20 lbs.



**84052 - 4" Square Notch Puller**

- Designed for offset applications and getting around obstacles.
- Overall Length 10.00", Weight 0.50 lbs.



**84053 - 4" Scraper**

- Use for general scraping applications.
- Overall Length 10.25", Weight 0.35 lbs.



**84054 - 4" Curved Blade V-Notch Puller**

- For hard to reach panel clips.
- Overall Length 9.50", Weight 0.40 lbs.



**83131 - Tape Measure - 16 Ft**

- 16' x 1-1/16" wide.
- Coated blade for durability.
- Stainless case.
- Rubber molded for comfort.



**83132 - Flashlight Aluminum**

- Aluminum body with rubber grip.
- Five LED bulbs above 13000 mcd, white light.
- Weatherproof.
- Rubber ring around head of flashlight.
- Includes carry case.

**86990 - Mechanics Gloves****86991 - Fender Cover**

- Magnetic
- Oil Resistant
- Measure 34-1/2" W x 18-1/2" L