



SPECIALTY TOOLS

We at Stanley Proto pride ourselves on having one of the most comprehensive, high quality lines of industrial tools anywhere. That's why we supplement our core tool offerings with a range of Specialty Tools. Some of these tools, like our Feeler Gauges and Oil Filter Wrench, are specific to a particular trade while others will earn their keep just about anywhere that people work on machinery.

A good example of the latter is the Retrieving Tool, which can sometimes be the only way to retrieve a nut, bolt, or other metallic part ---- (or even a socket or set of pliers) – that has fallen into the recesses of a machine, utility panel, or engine compartment. This tool consists of a magnet attached to the end of a fixed or telescoping handle,

and can extend the user's reach by as much as 2 feet. We offer straight-handle models, as well as flexible ones that will reach around corners and other obstacles.

Of course the first step to retrieving a lost item is to find it, and that may call for some way to see into those dark and hidden recesses. That's why we offer Inspection Mirrors. These consist of a circular, oval, or rectangular mirror that's attached via an all-angle ball joint to a long or short handle. Mirror handles come in fixed and telescoping varieties, and in lengths up to 15-1/2 inches.

The Specialty Tools in this section are just one of the ways we ensure that you have all the tools to tackle any job.



Specialty Tools

CIRCULAR INSPECTION MIRROR

- Versatile all-angle ball joint.

Product		Weight	
ID No.	Mirror Size	Length	lbs.
J2370	7/8" Dia.	7-1/2"	.08
J2374	1-1/4" Dia.	8"	.09



OVAL INSPECTION MIRROR

- Versatile all-angle ball joint.

Product		Weight	
ID No.	Mirror Size	Length	lbs.
J2371	1" x 2"	8-3/4"	.08



TELESCOPIC CIRCULAR INSPECTION MIRROR

- Versatile all-angle ball joint.
- Features telescoping handle.

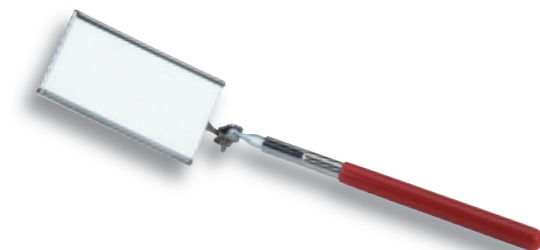
Product		Weight	
ID No.	Mirror Size	Length	lbs.
J2372	2-1/4" Dia.	10" to 14"	.25



TELESCOPIC RECTANGULAR INSPECTION MIRROR

- Versatile all-angle ball joint.
- Features telescoping handle.
- With pocket clip.

Product		Weight	
ID No.	Mirror Size	Length	lbs.
J2373	2-1/8" x 3-1/2"	11-1/4" to 15-1/2"	.30





POCKET MAGNETIC RETRIEVING TOOL

- Versatile telescoping handle and all-angle ball joint.

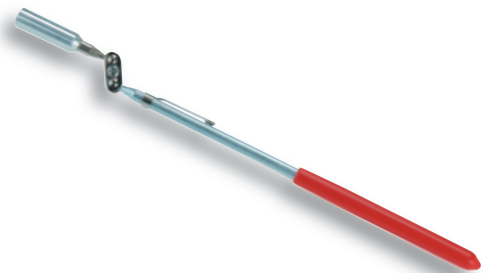
Product ID No.	Length	Weight lbs.
J2375	16-3/4" to 26-3/4"	.40



POCKET MAGNETIC RETRIEVING TOOL

- Aluminum head that contains a neodymium magnet.
- All angle ball joint.
- Magnet can lift up to 1-1/2 lbs.
- Pocket clip.

Product ID No.	Length	Weight lbs.
J2376A	8-1/2"	0.08 lbs.



FLEXIBLE RETRIEVING AND HOLDING TOOLS

- Designed to position or retrieve small objects.
- Spring loaded plunger actuates jaws at end of flexible casing.

Product ID No.	Length	Weight lbs.
J2344	13-1/2"	.19
J2345	23-1/2"	.26



FLEXIBLE MAGNETIC RETRIEVING TOOLS

- Retrieves small objects from hard to reach places.
- Push button allows reaching an object before energizing the magnet.
- J2377 lifts over 1.5 lbs.
- J2378 lifts over 3.0 lbs.

Product ID No.	Strength	Length	Weight lbs.
J2377	1.5 lbs.	19-1/2"	.27
J2378	3.0 lbs.	24-1/2"	.37



Specialty Tools

22 BLADE STEP CUT FEELER GAUGE SET

- "Go and no-go" blades 1/2" wide by 3-5/16" long in holder.
- Each blade has two different thicknesses.
- Sizes include: .004/.006", .005/.007", .006/.008", .007/.009", .008/.010", .009/.011", .010/.012", .011/.013", .012/.014", .013/.015", .014/.016", .015/.017", .016/.018", .017/.019", .018/.020", .019/.021", .020/.022", .021/.023", .022/.024", .023/.025", .024/.026", .025/.027".
- Blades etched with both decimal size and metric equivalent.



Product ID No.	Weight lbs.
J000N	.18

25 BLADE MASTER FEELER GAUGE SET

- Contains twenty-five short blades in holder.
- Includes all short blade sizes .0015" thru .040" except .019".
- Blades etched with both decimal size and metric equivalent.



Product ID No.	Weight lbs.
J000AA	0.19

9 BLADE STANDARD FEELER GAUGE SET

- Contains 9 short blades in holder.
- Short blades in sizes .003", .004", .005", .006", .008", .010", .012", .015", .018", in No. 000C holder.
- Blades etched with both decimal size and metric equivalent.



Product ID No.	Weight lbs.
J000A	0.07

25 BLADE LONG FEELER GAUGE SET

- 1/2" wide by 12" long blades in steel blade holder.
- Sizes: .0015", .002", .003", .004", .005", .006", .007", .008", .009", .010", .011", .012", .013", .014", .015", .016", .017", .018", .019", .020", .021", .025", .027", .030", .040".
- Blades etched with both decimal size and metric equivalent.



Product ID No.	Weight lbs.
J000TL	0.72



Specialty Tools



12 BLADE LONG FEELER GAUGE SET

- Blades 1/2" wide by 12" long in steel holder.
- Includes sizes: .0015", .002", .003", .004", .005", .006", .008", .010", .012", .014", .015", .020".
- Blades etched with both decimal size and metric equivalent.

Product ID No.	Weight lbs.
J000SL	0.30



25 BLADE METRIC FEELER GAUGE SET

- 1/2" x 3-5/16" metric blades in steel holder.
- Sizes: 0.04 mm, 0.05 mm, 0.06 mm, 0.07 mm, 0.08 mm, 0.09 mm, 0.10 mm, 0.15 mm, 0.20 mm, 0.25 mm, 0.30 mm, 0.35 mm, 0.40 mm, 0.45 mm, 0.50 mm, 0.55 mm, 0.60 mm, 0.65 mm, 0.70 mm, 0.75 mm, 0.80 mm, 0.85 mm, 0.90 mm, 0.95 mm, 1.00 mm.

Product ID No.	Weight lbs.
J00MM25	0.22



16 BLADE OVERHEAD VALVE FEELER GAUGE SET

- 1/2" wide bent gauges for setting overhead valves.
- Includes sizes .009", .010", .011", .014", .015", .016", .017", .018", .019", .020", .021", .023", .024", .025", .026", .027".
- Blades are etched with both the decimal size and metric equivalent.
- Blades are offset at a right angle to help protect hands from a hot manifold while setting an overhead valve.

Product ID No.	Weight lbs.
J000R	0.25



11 BLADE BENT FEELER GAUGE SET

- Blades 1/2" wide by 4-3/16" in sizes .006", .008", .010", .011", .012", .013", .014", .015", .018", .019", .020".
- Blades are etched with both the decimal size and metric equivalent.

Product ID No.	Weight lbs.
J000M	0.13



Specialty Tools

15 BLADE METRIC FEELER GAUGE SET

- Steel blade holder contains one each of the following 1/2" x 3-5/15" blades; 0.06mm, 0.07mm, 0.08mm, 0.20mm, 0.25mm, 0.30mm, 0.35mm, 0.40mm, 0.45mm, 0.50mm, 0.55mm, 0.60mm, 0.70mm.

Product ID No.	Weight lbs.
J00MM15	0.13



9 BLADE METRIC FEELER GAUGE SET

- 1/2" x 3-5/16" blades in steel holder.
- Includes sizes: 0.06mm, 0.10mm, 0.15mm, 0.20mm, 0.30mm, 0.35mm, 0.40mm, 0.50mm, 0.60mm.

Product ID No.	Weight lbs.
J00MM9	0.09



6 BLADE NON-MAGNETIC FEELER GAUGE SET

- Contains non-magnetic brass feeler blades for checking the air gap in electronic ignition systems for all weather conditions.
- Each blade is 1/2" wide, 3-5/16" long in sizes .006", .008", .010", .012", .014", .016".
- Etched with both decimal sizes and metric equivalents.

Product ID No.	Weight lbs.
J000BR	0.08



SHORT BLADE HOLDER

- Large enough to accommodate all 26 short blades.

Product ID No.	Weight lbs.
J000C	0.05



Specialty Tools



10 BLADE IGNITION FEELER GAUGE SET

- Blades 1/4" wide by 1-3/4" in holder.
- Includes sizes .013", .015", .017", .018", .020", .025", .030", .032", .035" .040".
- Etched with both decimal sizes and metric equivalent.

Product	Weight
ID No.	lbs.
J000D	0.06



HIGH ENERGY SPARK PLUG GAP GAUGE SET

- For use in setting gaps and spark plugs with high energy ignition systems.
- Includes blade holder, electrode bender and six bent wire gauges in sizes .044", .045", .050", .054", .060", .080".
- Gauges marked with both decimal sizes and metric equivalent.

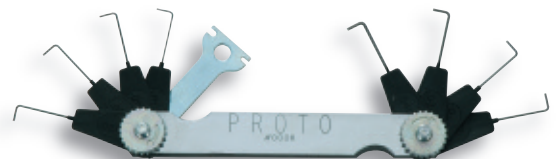
Product	Weight
ID No.	lbs.
J000J	0.08



SPARK PLUG GAP GAUGE SET

- Spark plug electrode bender and eight bent wire gauges in sizes .020", .025", .028", .030", .032", .034" .035" .040".
- Gauges marked with both decimal sizes and metric equivalent.

Product	Weight
ID No.	lbs.
J000K	.07



LONG BLADE HOLDER

- Large enough to accommodate all 28 long blades.

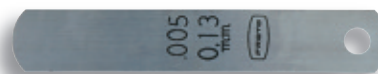
Product	Weight
ID No.	lbs.
J000L	.13



Specialty Tools

FEELER GAUGES - SHORT BLADE

Product ID No.	Blade Thickness	Weight lbs.
J0015	.0015"	0.01
J002	.002"	0.01
J003	.003"	0.01
J004	.004"	0.04
J005	.005"	0.01
J006	.006"	0.01
J007	.007"	0.01
J008	.008"	0.02
J009	.009"	0.01
J010	.010"	0.02



FEELER GAUGES - LONG BLADE

Product ID No.	Blade Thickness	Weight lbs.
J0015L	.0015"	0.01
J002L	.002"	0.01
J003L	.003"	0.03
J004L	.004"	0.01
J005L	.005"	0.01
J006L	.006"	0.02
J008L	.008"	0.02
J010L	.010"	0.02
J015L	.015"	0.03



MULTI-PURPOSE TOOL - NEEDLE NOSE

- 15 functions including pliers with wire cutter, cross cut saw, taper grind blade, sheepfoot blade, can & bottle opener, ruler, and screwdriver bits provide versatility.
- Locking handle securely positions and safely locks each blade or implement for safety.
- Stainless steel construction for heavy-duty use and long life.
- Nylon belt pouch for convenient storage.
- Wide handle design for added comfort.

Product ID No.	Length	Weight lbs.
J18576	6"	0.07



Specialty Tools



MULTI-PURPOSE TOOL - BLUNT NOSE

- 15 functions including pliers with wire cutter, cross cut saw, taper grind blade, sheepfoot blade, can & bottle opener, ruler, and screwdriver bits provide versatility.
- Locking handle securely positions and safely locks each blade or implement for safety.
- Stainless steel construction for heavy-duty use and long life.
- Nylon belt pouch for convenient storage.
- Wide handle design for added comfort.



Product ID No.	Length	Weight lbs.
J18575	5-5/8"	.56

LOCKBACK KNIFE

- 400 grade stainless steel blade.
- Solid wood handle with heavy-duty lock springs.
- One piece brass bolster and liner provide additional strength.



Product ID No.	Closed Position Overall Length	Open Position Overall Length	Blade Length	Weight lbs.
J18543	3"	5-1/4"	2-1/4"	.16

LOCKBACK KNIFE - WITH LEATHER SHEATH

- 400 grade stainless steel blade.
- Laminated hardwood handle with heavy-duty lock springs.
- Solid one piece brass bolster and liner provide additional strength.



Product ID No.	Closed Position Overall Length	Open Position Overall Length	Blade Length	Weight lbs.
J18545	5"	8-1/2"	3-1/4"	.57

COMMEMORATIVE LOCKBACK KNIFE

- Commemorative sculptured brass handle.
- Unique artwork features the Proto® logo on one side, a selection of Proto® tools on the reverse side.



Product ID No.	Closed Position Overall Length	Open Position Overall Length	Blade Length	Weight lbs.
J18510	3"	5-1/4"	2"	.16

Specialty Tools

FACOM® INSULATED KNIFE VSE SERIES

- For working on live components up to 1000V AC and 1500V DC.
- Thick, angled blade with flat tip.
- Cushion handle.
- Blade sheath.
- Effective blade length 2".



Product ID No.	Blade Length	Overall Length	Weight lbs.
FT-1820.AVSE	2-3/8"	7-1/2"	0.19

ELECTRICIAN'S KNIFE

- Spear blade.
- Stripping blade.
- Self-locking combination screwdriver, insulation cutter and wire scraper blade.

Product ID No.	Closed Position Overall Length	Open Position Overall Length	Blade Length	Weight lbs.
J18535	3-3/4"	7"	3"	.32



ELECTRICIAN'S KNIFE

- Spear blade.
- Self-locking combination screwdriver, insulation cutter and wire scraper blade.

Product ID No.	Closed Position Overall Length	Open Position Overall Length	Blade Length	Weight lbs.
J18500	3-3/4"	7"	3"	.24



PRUNING KNIFE

Product ID No.	Closed Position Overall Length	Open Position Overall Length	Blade Length	Weight lbs.
J18505	4-3/4"	9"	4"	.26



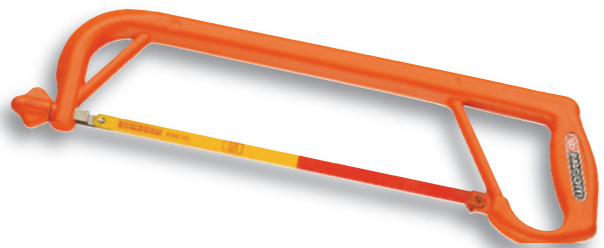


FACOM® INSULATED HACKSAW VSE SERIES

- Two blade positions.
- Butterfly tension nut.
- Supplied with bi-metal blade.
- 12" Blade replacement.



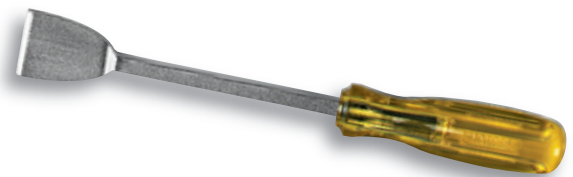
Product ID No.	Blade Length	Overall Length	Weight lbs.
FT-602.AVSE	12"	18-1/2"	1.3



GASKET SCRAPER AND CARBON SCRAPER

- Ideal for removing gaskets and carbon.
- Comfortable, four sided handle.

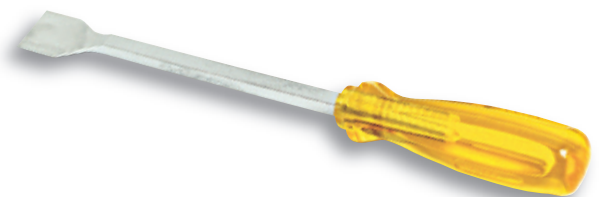
Product ID No.	Blade Width	Length In	Weight lbs.
J2336	1-1/2"	12"	.30



GASKET AND CARBON SCRAPER

- Narrow, angled blade for access into tight areas.
- Ideal for removing gaskets and carbon.
- Comfortable, four sided handle.

Product ID No.	Blade Width	Length	Weight lbs.
J2338	1-1/16"	11"	.38



FLEXIBLE CARBON SCRAPER

- Excellent for removing carbon from contoured or flat surfaces.
- Flexibility of ten individual spring steel blades is regulated with sliding steel band

Product ID No.	Blade Width	Blade Length	Weight lbs.
J2337	7/8"	9"	.30



Specialty Tools

COTTER PIN PULLER

- Precision formed curves provide excellent leverage in prying out cotter pins quickly and easily.
- Large plastic handle.



Product		Weight
ID No.	Blade Length	lbs.
J2306	7-3/4"	.25

SET NO. J9500B - 10 PC. SCREW EXTRACTOR SET

- Weight: 4.5 lbs.

Product			
ID No.	Contents	Description	Length
J9500B	J9521	1/8"	2-5/16"
	J9522	3/16"	2-5/8"
	J9523	7/32"	2-7/8"
	J9524	5/16"	3"
	J9525	3/8"	3-1/4"
	J9525B	15/32"	3-7/8"
	J9526	9/16"	4-1/5"
	J9527	21/32"	4-7/8"
	J9528	13/16"	5-3/8"
	J9529	1-1/16"	5-1/2"



SET NO. J9500A - 5 PC. SCREW EXTRACTOR SET

- Weight: 0.28 lbs.

Product			
ID No.	Contents	Description	Length
J9500A	J9521	1/8"	2-5/16"
	J9522	3/16"	2-5/8"
	J9523	7/32"	2-7/8"
	J9524	5/16"	3"
	J9525	3/8"	3-1/4"
	J25TR49C	Tool Roll 5 Pockets	6-3/32"



Specialty Tools



SCREW EXTRACTORS

- Drive into end of broken pipe or fitting.
- Use tap holder or wrench on extractor to turn out broken part.
- Size stamped on extractor refers to drill bit size to be used with that extractor.



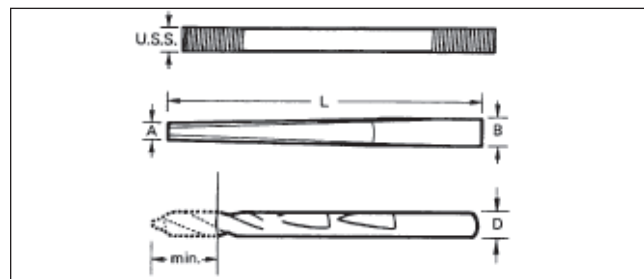
Product ID No.	U.S.S.	D	A	B	L	Weight lbs.
J9521	1/4", 5/16"	1/8"	1/8"	3/16"	2-5/16"	0.02
J9522	3/8"	3/16"	11/64"	3/16"	2-5/8"	0.02
J9523	7/16"	7/32"	13/64"	1/4"	2-7/8"	0.05
J9524	1/2", 9/16"	5/16"	19/64"	5/16"	3"	0.07
J9525	5/8"	3/8"	11/32"	3/8"	3-1/4"	0.12
J9525B	3/4"	15/32"	1/8"	1/8"	3-7/8"	0.18
J9526	7/8"	9/16"	1/2"	1/2"	4-1/5"	0.29
J9527	1", 11/8"	21/32"	19/32"	5/8"	4-7/8"	0.47
J9528	1-1/4", 1-3/8"	13/16"	23/32"	3/4"	5-3/8"	0.72
J9529	1-1/2"	1-1/16"	31/32"	1"	5-1/2"	1.30

SET NO. FA-287B.JS5 - FACOM® 5 PC. STUD EXTRACTOR ROLLER SET

- 5 Stud drivers for sizes M6, M7, M8, M9 and M10.
- Supplied in a CKS rack.
- Weight: 2.58 lbs.



Product ID No.	Contents	Capacity	Capacity mm	Length	Weight lbs.
FA-287B.JS5	FA-287B.10	1/4"	6	3-5/32"	0.55
	FA-287B.6	13/32"	10	2-3/4"	0.38
	FA-287B.7	15/32"	12	2-3/4"	0.38
	FA-287B.8	9/16"	14	2-3/4"	0.38
	FA-287B.9	5/8"	16	3-5/32"	0.56



Specialty Tools

FACOM® STUD EXTRACTORS EXTERNAL CAM / KNURL TYPE

- Turn extractor with a ratchet, wrench or socket to engage the cam and stud, then pull out stud.
- 1/2" and 1/4" drive capacity.
- Knurled wheel grips stud when pressure is applied.
- Hex drive can be driven with wrench or ratcheting tool.
- Ideal for bolts with rusted, corroded or stripped threads.
- Heavy duty finish.



Product ID No.	Length In	Weight lbs.
FA-286A	2-5/32"	0.86
FA-286.PL	2-15/16"	2.11

FACOM® STUD EXTRACTORS INTERNAL CAM / ROLLER TYPE

- Designed to grip studs using cam assemblies.
- Capacity ranging from 6-16mm.
- 1/2" drive.
- Full polish finish.



Product ID No.	Length In	Weight lbs.
FA-287B.6	2-3/4"	0.38
FA-287B.7	2-3/4"	0.38
FA-287B.8	2-3/4"	0.38
FA-287B.9	3-5/32"	0.56
FA-287B.10	3-5/32"	0.55
FA-287B.12	3-5/32"	0.53
FA-287B.14	2-15/16"	0.76
FA-287B.16	2-15/16"	0.69

SET NO. J140SET - 4 PIECE INTERNAL PIPE WRENCH SET

- Ideal for removing broken threaded pipe ends, plugs, and fittings.
- Installation and removal without thread damage.
- Eccentric cam action engages wrench against the walls of the pipe.
- Hex body allows for use of adjustable wrench for added torque.
- Made from hardened steel and plated to help prevent rust.
- Weight: 1.48 lbs.



Product ID No.	Contents	Description	Length
J140SET	J140-38	3/8"	3-3/4"
	J140-34	3/4"	3-3/4"
	J140-12	1/2"	3-3/4"
	J140-1	1"	3-3/4"



Specialty Tools



INTERNAL PIPE WRENCHES

Product ID No.	Description	Weight lbs.
J140-1	3/8"	0.84
J140-34	3/4"	0.49
J140-38	1/2"	0.25
J140-12	1"	0.33



SET NO. FA-289 - FACOM® 3 PC. NUT SPLITTER

- Supplied in a plastic tray.
- Weight: 1.19 lbs.

Product ID No.	Contents	Item Description	Length
FA-289	FA-289.19	Nut Splitter 19mm	4-11/32"
	FA-289.30	Nut Splitter 30mm	4-29/32"
	FA-289.V1	Spare Screw	3-15/16"



FACOM® NUT SPLITTERS

- Removes frozen, corroded or rusted nuts.
- 4 parts to choose from with nut capacity ranging from 2mm minimum to 46mm maximum across flats.
- Will not damage bolt threads.
- 3 Replacement chisel point screws available.



Product ID No.	External Diameter mm	Internal Diameter mm	Length In	Maximum Screw Size	Minimum Screw Size	Weight lbs.
FA-289.19	31	19	4-11/32"	8	2	0.59
FA-289.30	50	30	4-29/32"	16	10	0.71
FA-289.36	62	36	8-1/16"	20	16	2.5
FA-289.54	90	50	9-9/32"	30	20	6.14

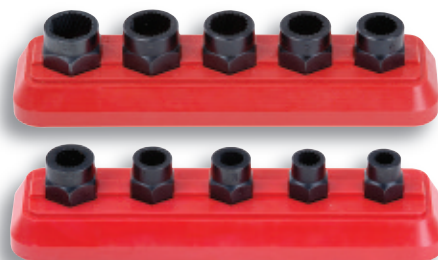
NUT SPLITTER - SPARE SCREWS

Product ID No.	Length	Weight lbs.
FA-289.V1	3-15/16"	0.24
FA-289.V2	6-1/2"	0.84
FA-289.V3	7-15/32"	1.77

Specialty Tools

SET NO. J69X00 - 10 PC. BOLT EXTRACTOR SOCKET SET

- Proto® Bolt Extractor Sockets make it easy to remove rusted, rounded or damaged nuts and bolts.
- The working end has 18 - 30 teeth in a hexagonal configuration to help grip rounded hexagonal fasteners, round head bolts and pan head screws.
- Low profile design helps gain access to fasteners in tight spaces.
- The non-working hex-shaped end can be turned with wrenches or sockets.
- Proto® Bolt Extractor Sockets can be used in combination with other drive tools (such as extensions, universal joints or ratchets with short arc swings) to help reach fasteners in difficult locations.
- Through-hole design helps gain access to fasteners at the end of long bolts or studs.
- Can be used on SAE or metric fasteners.
- Sets provided in mar-resistant tool holders.
- Weight: 0.87 lbs.



Product ID No.	Contents	Description
J69X00	J69X09	Xtr Skt 7mm 1/4", 9/32"
	J69X10	Xxt Skt 8mm 5/16"
	J69X11	Xtr Skt 9mm 11/32"
	J69X12	Xtr Skt 3/8"
	J69X13	Xtr Skt 10mm
	J69X14	Xtr Skt 11mm 7/16"
	J69X15	Xtr Skt 12mm
	J69X16	Xtra Skt 13mm 1/2"
	J69X18	Xtr Skt 14mm 9/16"
	J69X20	Xtr Skt 15mm 16mm 5/8"

SET NO. J69X01- 5 PC. BOLT EXTRACTOR SOCKET SET

- Proto® Bolt Extractor Sockets make it easy to remove rusted, rounded or damaged nuts and bolts.
- The working end has 18 - 30 teeth in a hexagonal configuration to help grip rounded hexagonal fasteners, round head bolts and pan head screws.
- Low profile design helps gain access to fasteners in tight spaces.
- The non-working hex-shaped end can be turned with wrenches or sockets.
- Proto® Bolt Extractor Sockets can be used in combination with other drive tools (such as extensions, universal joints or ratchets with short arc swings) to help reach fasteners in difficult locations.
- Through-hole design helps gain access to fasteners at the end of long bolts or studs.
- Can be used on SAE or metric fasteners.
- Sets provided in mar-resistant tool holders.
- Weight: 0.40 lbs.



Product ID No.	Contents	Description
J69X01	J69X09	Xtr Skt 7mm 1/4", 9/32"
	J69X10	Xxt Skt 8mm 5/16"
	J69X11	Xtr Skt 9mm 11/32"
	J69X12	Xtr Skt 3/8"
	J69X13	Xtr Skt 10mm



SET NO. J69X02 - 5 PC. BOLT EXTRACTOR SOCKET SET

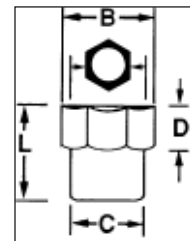
- Proto® Bolt Extractor Sockets make it easy to remove rusted, rounded or damaged nuts and bolts.
- The working end has 18 - 30 teeth in a hexagonal configuration to help grip rounded hexagonal fasteners, round head bolts and pan head screws.
- Low profile design helps gain access to fasteners in tight spaces.
- The non-working hex-shaped end can be turned with wrenches or sockets.
- Proto® Bolt Extractor Sockets can be used in combination with other drive tools (such as extensions, universal joints or ratchets with short arc swings) to help reach fasteners in difficult locations.
- Through-hole design helps gain access to fasteners at the end of long bolts or studs.
- Can be used on SAE or metric fasteners.
- Sets provided in mar-resistant tool holders.
- Weight: 0.49 lbs.



Product		
ID No.	Contents	Description
J69X02	J69X14	Xtr Skt 11mm 7/16"
	J69X15	Xtr Skt 12mm
	J69X16	Xtra Skt 13mm 1/2"
	J69X18	Xtr Skt 14mm 9/16"
	J69X20	Xtr Skt 15mm 16mm 5/8"

BOLT EXTRACTOR SOCKETS

- Proto® Bolt Extractor Sockets make it easy to remove rusted, rounded or damaged nuts and bolts.
- The working end has 18 - 30 teeth in a hexagonal configuration to help grip rounded hexagonal fasteners, round head bolts and pan head screws.
- Low profile design helps gain access to fasteners in tight spaces.
- The non-working hex-shaped end can be turned with wrenches or sockets.
- Proto® Bolt Extractor Sockets can be used in combination with other drive tools (such as extensions, universal joints or ratchets with short arc swings) to help reach fasteners in difficult locations.
- Through-hole design helps gain access to fasteners at the end of long bolts or studs.
- Can be used on SAE or metric fasteners.



Product ID No.	Approximate Bolt Size	Size (mm)	B inches	C inches	D inches	L inches	Weight lbs.
J69X09	1/4", 9/32"	7mm	9/16"	5/8"	7/16"	3/4"	0.05 lbs.
J69X10	5/16"	8mm	9/16"	5/8"	7/16"	3/4"	0.04 lbs.
J69X11	11/32"	9mm	5/8"	11/16"	7/16"	3/4"	0.06 lbs.
J69X12	3/8"	-	5/8"	11/16"	7/16"	3/4"	0.05 lbs.
J69X13	13/32"	10mm	3/4"	13/16"	7/16"	3/4"	0.08 lbs.
J69X14	7/16"	11mm	3/4"	13/16"	7/16"	3/4"	0.07 lbs.
J69X15	15/32"	12mm	7/8"	7/8"	7/16"	3/4"	0.08 lbs.
J69X16	1/2"	13mm	7/8"	7/8"	7/16"	3/4"	0.08 lbs.
J69X18	9/16"	14mm	29/32"	15/16"	7/16"	3/4"	0.09 lbs.
J69X20	5/8"	15mm, 16mm	29/32"	15/16"	7/16"	3/4"	0.08 lbs.





2195 East View Parkway
Suite 103
Conyers, GA 30013

1-800-800-TOOL
1-770-648-9108 FAX
stanleyproto@stanleycustomersupport.com
www.stanleyproto.com

STANLEY
PROTO[®]