



SPECIFICATION SHEET

312-1350B



ANSI TYPE R CLASS 2 BLACK BOTTOM CREW NECK LONG SLEEVE T-SHIRT WITH UV PROTECTION

- 100% Polyester Birdseye Mesh
- Durable lightweight performance wicking fabric
- Enhanced with UPF 50+ protection
- 2" silver reflective tape
- 1 upper left chest pocket
- Black bottom helps hide dirt

APPLICATIONS

- Construction / Survey Crews
- Utilities
- Shipyards / Railyards

- Anywhere high visibility is needed

CARE INSTRUCTIONS

Recommend washing in tempered water not exceeding 104°F or 40°C. Wash in a 5-10 minute cycle time or hand wash. Rinse in cold water. Tumble dry at low temperature not exceeding 140°F or 40°C, do not wring. Do not wash in biological powder, wash as synthetics. Maximum of 30 wash cycles.

TECHNICAL DATA

MATERIAL	100% Polyester
CONSTRUCTION	Main Fabric: 140g/m ² (5 oz.) 100% polyester birds eye fabric, with UV treatment, UPF 50+ protection tested to 25+ washes Accessories: 110g/m ² 100% polyester rib Tape: 2" sew-on reflective tape
COLOR	Yellow or Orange
SIZES	S - 5X
PACKAGING	1 per polybag; 50 per case
CASE DIMENSIONS	19.6" x 13.7" x 15.75" / 50cm x 35cm x 40cm
CASE WEIGHT	25lbs / 11kg
COO	China

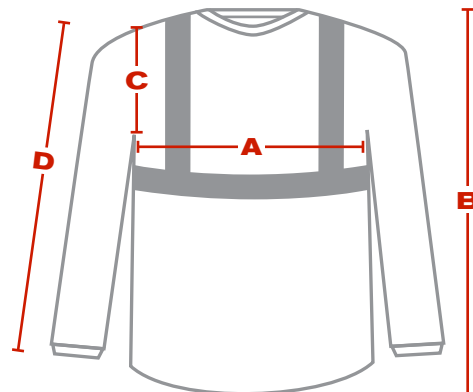
BARCODES

ITEM	BAG	BOX	CASE
312-1350BLY/S	616314190476	---	02616314190474
312-1350BLY/M	616314190483	---	02616314190481
312-1350BLY/L	616314190490	---	02616314190498
312-1350BLY/XL	616314190506	---	02616314190504
312-1350BLY/2X	616314190513	---	02616314190511
312-1350BLY/3X	616314190520	---	02616314190528
312-1350BLY/4X	616314190537	---	02616314190535
312-1350BLY/5X	616314190544	---	02616314190542
312-1350BOR/S	616314190551	---	0 2616314190559
312-1350BOR/M	616314190568	---	02616314190566
312-1350BOR/L	616314190575	---	02616314190573
312-1350BOR/XL	616314190582	---	02616314190580
312-1350BOR/2X	616314190599	---	02616314190597
312-1350BOR/3X	616314190605	---	02616314190603
312-1350BOR/4X	616314190612	---	02616314190610
312-1350BOR/5X	616314190629	---	02616314190627



DIMENSIONS (in/cm)

	S	M	L	XL	2X	3X	4X	5X
A	44 / 17.3	48 / 18.9	50 / 19.7	52 / 20.4	54 / 21.25	58 / 22.8	61 / 24	63 / 24.8
B	27.5 / 70	28.5 / 71.2	29 / 71.4	30 / 71.8	31 / 72.2	31.5 / 72.4	32 / 72.6	33 / 73
C	9.5 / 24.1	10 / 25.4	10.5 / 26.7	11 / 27.9	11 / 27.9	11.5 / 29.2	12 / 30.5	12.5 / 31.8
D	22.5 / 57.2	23 / 58.4	24 / 61	25 / 63.5	25.5 / 64.8	26.5 / 67.3	27 / 68.6	28 / 71.1



PROTECTIVE INDUSTRIAL PRODUCTS, INC. | BRINGING THE BEST OF THE WORLD TO YOU®

AMERICAS: (800) 262-5755 • (518) 861-0133 | EUROPE: +34-96182-41-48 | AMEA: (ASIA, MIDDLE EAST, AFRICA) 852-2475-9228 | www.pipglobal.com

This document and the information contained herein is the property of Protective Industrial Products, Inc. (PIP) and may not be used or reproduced without permission. Product users should conduct all appropriate testing or other evaluations to determine the suitability of PIP products for a particular purpose or use within a particular environment. PIP DISCLAIMS ALL WARRANTIES OTHER THAN AS EXPRESSLY PROVIDED.