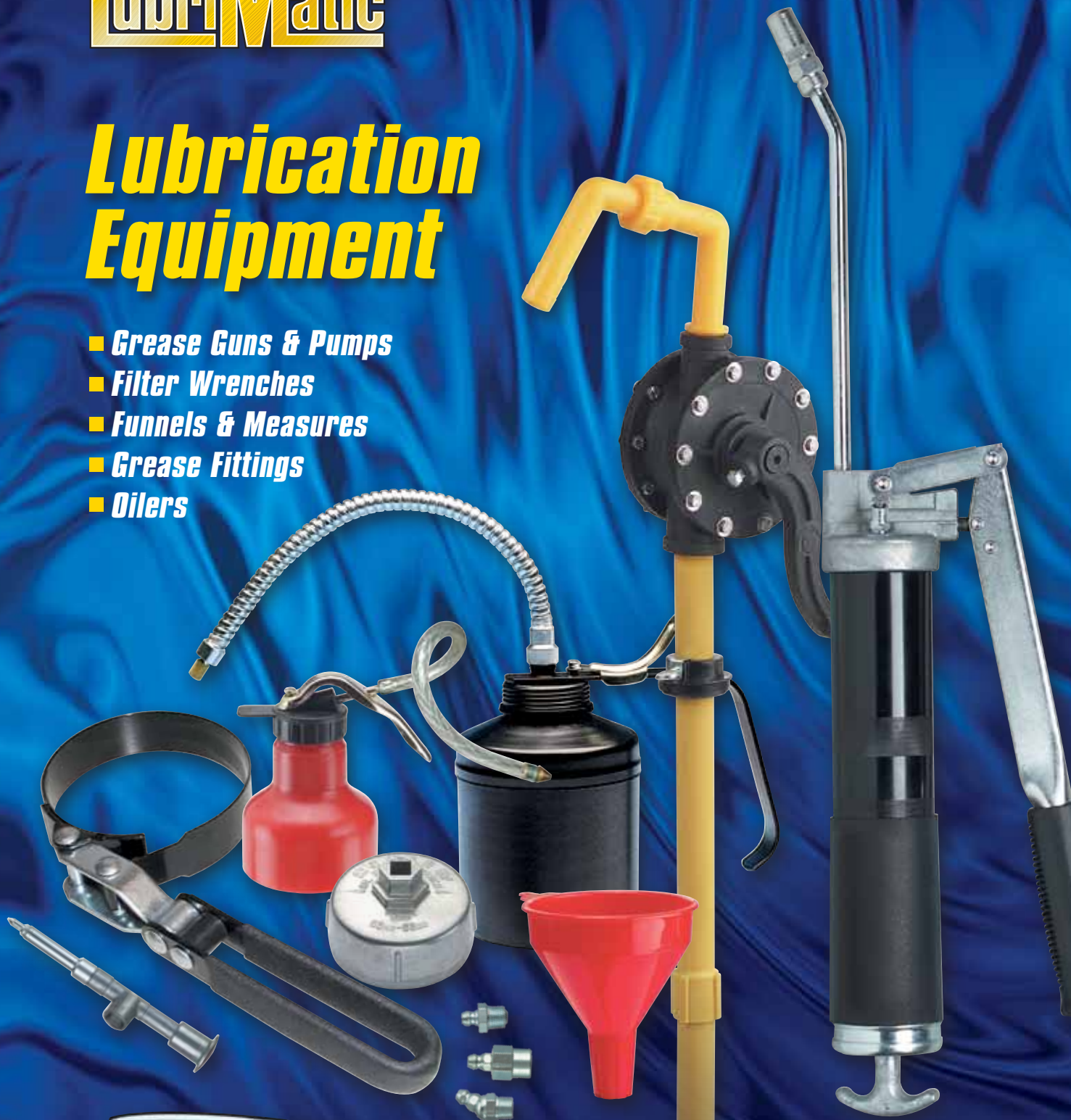




# Lubrication Equipment

- Grease Guns & Pumps
- Filter Wrenches
- Funnels & Measures
- Grease Fittings
- Oilers



*Professional Quality Tools for over 40 years*

# Grease Guns

## Mini Grease Guns

### Economy Mini Grease Gun

Small, versatile grease gun allows for front or top pipe placement. Barrel takes 3 oz. grease cartridge or can be suction loaded. Includes 5-1/2" straight pipe and standard duty coupler.

**30-100** Individual clamshell. 5 per case cut carton.

### General Purpose Mini Grease Gun Kits

A compact, "tool box" size grease gun perfect for hard-to-reach jobs. Ideal for do-it-yourself automotive, industrial, farm, RV and marine applications. Includes zinc die-cast head cap and pistol grip for easy one-hand operation and 3 oz. cartridge of LubriMatic® grease. Develops up to 3,600 PSI.

**30-132** With 3-1/2" pipe and coupler and LubriMatic Multi-Purpose Grease\*. 10 per master.

**30-132-07** (not shown) Gun only. Bulk packaged. 20 per master.

### Heavy Duty Mini Grease Gun Kits

Small, versatile gun allows for front or top pipe placement. Barrel takes 3 oz. grease cartridge or can be suction loaded. Includes push lock plunger, die-cast T-handle that locks in place for loading, 5-1/2" straight grease pipe, standard duty coupler and 3 oz. cartridge of grease\*. Develops up to 4,500 PSI.

**30-001** With UltraLube® Multi-Purpose Lithium Grease. 10 per master.

**30-190** With LubriMatic Marine Corrosion Control and Trailer Wheel Bearing Grease. 10 per master.

**30-192** With LubriMatic Multi-Purpose Lithium Grease. 10 per master.

**30-193** (not shown) Gun only. Bulk packaged. 25 per master.

## Battery Operated Grease Guns

### Pro-Tuff® 18v Battery Operated Grease Gun Kit

A first-in-class, powerful, cordless grease gun. 18 volt battery and heavy duty motor deliver over 7,500 PSI. 3-way loading and balanced to minimize operator strain.

**30-600** Grease gun in plastic molded carrying case. Includes 1 each of all replacement parts listed below. 2 per master.

#### Replacement Parts (not shown):

**30-610** 18v Battery. Individual clamshell. 2 per master.

**30-611** 18v Battery Charger. Individual clamshell. 2 per master.

**30-612** 42" Flex Hose. Individual clamshell. 5 per master.

**30-613** Barrel & Plunger Assembly. Individually boxed. 5 per master.

**30-614** Trigger Switch. Individually boxed. 5 per master.

**30-615** Motor Assembly. Individually boxed. 5 per master.

**30-616** Plastic Housing. Individually boxed. 5 per master.



30-100



30-132



30-132



30-192



30-001



30-600

\*See LubriMatic® or UltraLube® Oils & Greases Catalog

# Grease Guns

## Lever Grease Guns

### Standard Duty Grease Gun

Ideal for household and do-it-yourself automotive use. Uses standard 14 oz. cartridge. Develops up to 6,000 PSI. Delivers 1 oz. of grease/40 strokes.

**30-200** Individually boxed. 5 per master.

**30-449** Polybagged. 10 per master.

### Industrial Grease Gun

Made for the punishing day-in and day-out service required by industrial customers. Variable/short stroke for easy use in confined areas. Rugged fully zinc-plated finish. Dual port head cap with bulk loader fitting for 3-way loading: 14 oz. cartridge, bulk or suction. 5-3/8" pipe and coupler. Plated lever with comfortable oversized grip. Develops up to 10,000 PSI. Delivers 1.8 oz./40 strokes.

**30-465** Individually boxed. 5 per master.

### Professional Grease Gun

Our heavy duty grease gun for automotive professionals. Variable/short stroke for easy use in confined areas. Air bleeder and bulk loader fitting for 3-way loading: 14 oz. cartridge, bulk or suction. 5-3/8" pipe and coupler. Plated lever with comfortable oversized grip. Develops up to 10,000 PSI and delivers 1.8 oz./40 strokes.

**30-475** Individually boxed. 5 per master.

### The Ultimate® Grease Gun

Equipped with 10" grease pipe, HD coupler, longer lever, barrel and lever comfort grips, air bleeder valve, bulk loader fitting, variable stroke and 3-way loading: 14 oz. cartridge, bulk or suction. Develops up to 10,000 PSI, delivers 3.33 oz./40 strokes. Built to take extreme punishment.

**30-480** Individually boxed. 5 per master.

## Pistol Grease Guns

### Standard Duty Pistol Grease Gun

Easy one-hand operation. 2-way loading: 14 oz. cartridge or bulk load. Head cap port for adding air bleeder or bulk loader fitting. Develops up to 5,000 PSI. Equipped with 3-1/2" grease pipe and coupler.

**30-300** Individually boxed. 5 per carton.

**30-310** Includes 12" Flex Hose. Individually boxed. 5 per carton.

### Professional Pistol Grease Guns

Features variable stroke for use in tight places. 3-way loading: 14 oz. cartridge, bulk or suction. Includes air bleeder valve and bulk loader fitting. Develops up to 7,000 PSI. Delivers 1 oz./40 strokes.

**30-416** Includes 18" Flex Hose and vinyl handle grip. 5 per master.

## Suction Grease Gun

Designed for draining and filling non-corrosive liquids. Barrel holds approximately one pint with 9" stroke. Features 12" plastic hose and durable corrosion-resistant finish. Hose OD 9/16", Hose ID 5/16".

**30-118** 10 per master.



# Grease Guns & Accessories

## Air Operated Grease Guns

### Continuous Flow Air Operated Grease Gun

Continuously pumps grease while trigger is depressed. Delivers up to 6,000 PSI. Head cap port for adding air bleeder valve or bulk loader fitting. Capable of 3-way loading: 14 oz. cartridge, bulk or suction. Recommended inlet pressure – 90 PSI. Dispenses 5 oz. per minute

**30-114** 10 per master.

### Air Operated Grease Gun Combo Kit

Everything you need in one kit! Features continuous flow, air operated grease gun with special “butterfly lock” screw that enables grip handle to rotate 360° for working in confined areas. 3-way loading: 14 oz. cartridge, bulk or suction. Delivers up to 6,000 PSI. Recommended inlet pressure – 90 PSI. Also includes lever gun head cap for converting to manual operation. Kit includes 28 items in all – pliers, screwdrivers, wrenches and more. Ideal for the shop, farm and work site.

**30-500** Complete with carrying case. 1 per master.

## Miscellaneous Grease Guns

### Jiffy Luber® Handi Gun

Designed for quick grease jobs. Squeeze tubes (not included) fit into zinc die-cast body for easy dispensing. Includes 2-11/16” pipe.

**30-195** With plastic push-type adapter. Bulk packaged. 10 per master.

**30-196** With needle tip. Bulk packaged. 10 per master.

### Handi-Grip Pistol Luber®

All-purpose gun attaches to handy squeeze tubes of grease (not included). Includes spring-returned plated steel lever, zinc die-cast body, riveted plated steel link and standard duty coupler.

**30-197** With 5-1/2” Flex Hose. 10 per master.

## Flexible Grease Hoses

### Economy Flexible Grease Hoses

For use on hand operated grease guns only. 1/8” NPT male fittings on each end. Recommended working pressure is 3,000 PSI.

**10-200** 12” length. Carded. 10 per master.

**10-201** 18” length. Carded. 10 per master.

### Standard Duty Flexible Grease Hoses

For use on hand operated grease guns only. Steel 1/8” NPT male fittings on each end. Recommended working pressure is 5,000 PSI.

**10-212** 12” length. Carded. 10 per master.

**10-214** 12” length. Bulk packaged. 10 per master.

**10-218** 18” length. Bulk packaged. 10 per master.

**10-219** 18” length. Carded. 5 per master.

**301110007** 6” length with heavy duty brass end fittings. Bulk packaged. 200 per master.

### Flexible Grease Hoses for Air Operated Equipment

Heavy duty, double steel braided, high quality rubber grease hose with bend restrictor for air operated systems. 1/8” NPT male fittings on each end. Recommended working pressure is 8,000 PSI.

**10-514** 18” length. Carded. 10 per master.

**10-536** (not shown) 36” length. Bulk packaged. 12 per master.

## Grease Pipes

### 5-3/8” Curved Grease Pipe

Standard length pipe with 1/8” pipe thread on each end. 30° angle.

**05-061** Carded. 10 per master.



30-114

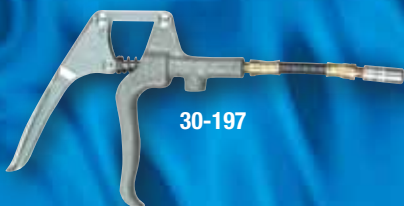
30-500



30-195



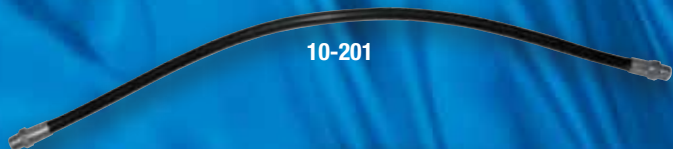
30-196



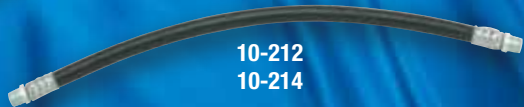
30-197



10-200

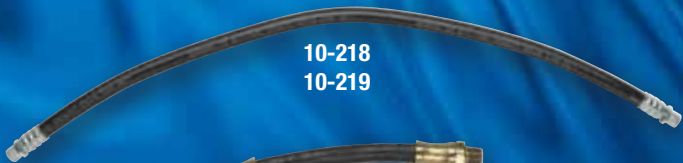


10-201



10-212

10-214

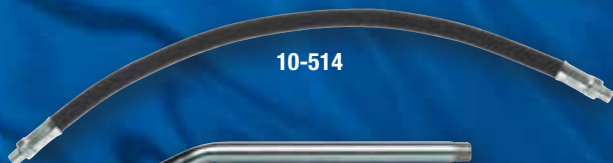


10-218

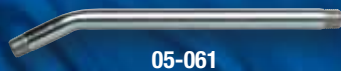
10-219



301110007



10-514



05-061

# Grease Gun Accessories

## Couplers for hand operated grease guns only

### Standard Coupler

Standard jaw-type coupler features spring-loaded ball check valve. Fits all 1/8" NPT threads. For hand operated lube equipment only. Recommended working pressure is 4,500 PSI. Length 1-7/16", width 5/8".

**05-031** Carded. 10 per master.

**05-028** Same as 05-031. Bulk packaged. 10 per master.

**05-030** Same as 05-031. Bulk packaged. 100 per master.

### Heavy Duty Coupler

For hand operated grease guns only. Recommended working pressure is 6,000 PSI. All steel construction. Fits all 1/8" NPT threads. Four jaws. Length 1-1/2", width 3/4".

**05-035** Carded. 10 per master.

**05-034** Bulk packaged. 10 per master.

### 90° Grease Coupler Adapter

For hard-to-reach grease fittings on cars, trucks and equipment. Ideal for lubrication of late model front wheel drive vehicles. Complete with both small and large sleeves to fit all standard couplers. For hand operated grease guns only. Recommended working pressure is 4,500 PSI.

**05-059** Carded. 5 per master.

### 90° Special Angle Coupler

Designed for hard to reach grease fittings, this 90° coupler with hex head greases fittings in confined spaces. 1/8"-27 NPTF. Recommended working pressure is 1,000 psi.

**05-058** Carded. 10 per master.

### 180° Swivel Coupler

Designed to lock at any angle up to 180°. Spring-loaded sleeve locks coupler in place for straight applications or slides back for angular application. Has 8" overall length and corrosion-resistant finish. For hand operated grease guns only. Recommended working pressure is 3,000 PSI.

**05-050** Carded. 10 per master.

### 360° Swivel Fitting

Swivels in a full 360° circle and locks in place. 45° angle gives easy access to most grease fittings. Comes with 05-028 standard grease coupler and 1/8" female inlet for extension pipe. For hand operated grease guns only. Recommended working pressure is 4,500 PSI.

**05-057** Carded. 5 per master.

## Couplers for air operated equipment

### Heavy Duty Coupler

Designed for use with air powered equipment as well as hand guns. Heavy duty construction withstands higher pressures. 3 hardened jaws reverse for longer coupler life. 2" long coupler with 11/16" diameter is tapped for 1/8" pipe threads. Recommended working pressure is 8,000 PSI.

**05-036** Carded. 10 per master.

**05-038** Bulk packaged. 25 per master.

### 360° Heavy Duty Swivel Coupler

Swivels in full 360° circle and locks in place. 45° angle gives easy access to most grease fittings. 1/8" NPT female inlet. For use with air operated equipment. Recommended working pressure is 6,000 PSI.

**05-052** Carded. 5 per master.



05-028  
05-030  
05-031



05-034  
05-035



05-059



05-058



05-050



05-057



05-036  
05-038



05-052

# Grease Gun Accessories



05-048



05-049



05-037



05-041



05-042



05-045



05-019



05-025



05-039



05-047

## Couplers for air operated equipment

### Button Head Fitting Coupler

Specially designed for button head grease fittings. 1/8" NPT female inlet. Zinc-plated steel.

**05-048** For 5/8" button head fittings. Carded. 5 per master.

**05-049** For 7/8" button head fittings. Carded. 5 per master.

## Adapters, Needles & Dispensers

### Grease Injector Needle

Lubricates in very tight places such as universal joints and sealed bearings. Stainless steel 18 gauge x 1-1/2" long needle. Equipped with standard grease fitting and protective plastic holder. For hand operated grease guns only.

**05-037** Carded. 10 per master.

### Seal-Off Dispenser

Use for lubricating cars with grease plugs. Oil and grease resistant rubber tip. 1/8" female NPT. Use with grease gun extension or hose. For hand operated grease guns only.

**05-041** Carded. 10 per master.

### Needle Tip Adapter

For chain saws, universal joints, bicycles, etc. For hand operated grease guns only.

**05-042** Carded. 10 per master.

### Needle Nose Dispenser

Dispenses a fine line of grease through needle nose. 3/4" adapter with 1/8" female NPT. Use with extension or hose. 19/32" needle length .046" tip diameter and .219" body diameter. For hand operated grease guns only.

**05-045** Carded. 10 per master.

### Professional Narrow Needle Nose Dispenser

Hardened steel tip and 1-1/2" length dispenses a fine line of grease. Ideal for hard-to-reach jobs. .046" tip diameter and .156" body diameter. For hand operated grease guns only. 1/8" NPT female.

**05-019** Carded. 10 per master.

### 4" Needle Nose Adapter

Perfect for use on trucks, vans and RVs. For converting jaw-type lube couplers to steel needle points. Dispenses fine line of grease through the needle nose. Includes both small and large sleeves to fit all standard couplers. Overall length 7-1/8", tip diameter .046", body diameter .250". For hand operated grease guns only.

**05-025** Carded. 10 per master.

## Grease Gun Accessories

### Air Bleeder Valve

Quickly vents air pockets in grease guns. Zinc-plated, easy to use. 1/8" NPT male fitting.

**05-039** Carded. 10 per master.

### Grease Gun Loader Fittings

Use in grease gun heads for bulk loading. Zinc-plated. 1/8" NPT male fitting.

**05-047** 0.596" OD (Plews/LubriMatic®). Carded. 10 per master.

# Grease Gun Acc./Pumps

## Grease Gun Accessories

### Grease Gun Holder

Designed for wall mounting with 2 screws (not included). Center latch locks. Corrosion-resistant finish.

**70-901** Carded. 5 per master.

**70-902** Bulk packaged. 25 per master.

### Grease Gun Clip-On LED Light

3 bright 5mm LEDs illuminate fittings in dark, hard-to-reach areas. Fits all 14 oz. grease guns and swivels 180°.

**70-903** Carded. 5 per master.

## Bearing Packers

### Deluxe Bearing Packer

For use with either hand operated or power lube equipment. Threaded center post for positive locking of wheel bearing. For bearings having a minimum ID of 1/2" to maximum OD of 5", height of 1/4" to 2". Rugged steel construction.

**70-025** Carded. 10 per master.

### Grease Pump Bearing Packer

Hand operated, portable bearing packer. Ideal for packing several bearings in a short amount of time. For all car, boat, trailer and RV bearings having a minimum ID of 1/2" to a maximum OD of 5". Height of 1/4" to 2". Rugged steel construction. Fits 35 – 50 lb. standard grease containers. Includes follower plate.

**55-107** For 5 gallon plastic pails.

## Grease Gun Filler Pumps

Include filler adapter (0.596" ID) for bulk loading grease guns. Equipped with follower plate, pail cover and filler adapter cap to prevent grease contamination.

**55-117** Fits 35 – 50 lb./5 gallon plastic pail.

## Bottle Pumps

Ideal for adding oil and other fluids to small engines and marine lower units. Flexible hose for hard-to-reach fill plugs. Quart sized.

**55-001** 4 cc pump. Clamshell packaged. 12 per master.

\* **55-005** 4 cc pump and 3/8"-16 swivel metal marine filler fitting. Clamshell packaged. 6 per master.

\* **55-007** 4 cc pump and 3/8"-16 plastic marine filler fitting. Bagged. 12 per master.

\* Adapter included with pump fits Mercruiser, Mercury, OMC, Evinrude, Johnson, Volvo, Force, Gamefisher and Honda (70 hp and up) models.

## Marine Lower Unit Adapter Fittings

Adapts 55-005, 55-007, 55-008 and 55-011 for various lower units.

**55-012** (not shown) For Tohatsu, Nissan and Honda (2 – 50 hp) lower units. 8 mm x 1.25" thread. Carded. 5 per master.

**55-013** (not shown) For Suzuki lower units. 10 mm x 1.25" thread. Carded. 5 per master.



70-901  
70-902



70-025



55-107

55-117



55-001



55-005



55-007

# Pumps

55-008  
55-009  
55-010

55-440

55-441

55-140

55-011

55-303

55-200

30-108

## Lube Tubes

Marine lower unit drain, flush and fill tool. Quick, easy and clean way to change marine lower unit gear lube. For use with all 8 and 10 oz. squeeze tubes. 10 per master.

**55-008** For Mercruiser, OMC, Evinrude, Johnson, Force, Gamefisher and Honda (70 hp and up) models. 3/8"-16 thread. Carded.

**55-009** For Suzuki models. 10 mm x 1.25" thread. Carded.

**55-010** For Yamaha, Nissan, Tohatsu and Honda (2 – 50 hp) models. 8 mm x 1.25" thread. Carded.

## Fluid Lubricant Pumps

### Lever Action Dispenser

For transfer of transmission, differential and heavier oils. Self priming. Delivers 3 oz. per stroke. Complete with 4 ft. oil-resistant hose and drum pail cover. Fits open head pails/drums.

**55-440** For 5 gallon/35 lb. pail.

**55-441** For 16 gallon/120 lb. pail.

### Marine Lower Unit Pail Pump

For bulk filling of marine lower units and stern drives. Delivers 3 oz. per stroke. Complete with threaded fitting for domestic standard lower units. Fill adapters for other engines available (see 55-012 and 55-013, page 7).

**55-011** Fits 5 gallon/35 lb. pail.

### 5 Gallon Pail Pump

For transfer of light oil to gear oil. Delivers 60 ml per stroke. 5 ft. clear hose includes internal and external bend restrictors. Head swivels 360°. Includes check valve in nozzle.

**55-140** Individually bagged. 10 per master.

## Rotary Barrel Pumps

For transferring non-corrosive petroleum-based fluids of light to medium viscosity. For industrial, commercial, automotive and agricultural applications. Single direction 2-vane pump with rugged cast iron housing and 42" steel suction pipe. Spout OD 1-1/16".

**55-303** 1 gallon per 18 revolutions. Individually boxed.

**Replacement Parts** (not shown):

**99105** Bung adapter with thumb screw for 55-303.

**99106** Crank handle for 55-303.

## Transfer Pumps

### Fuel Transfer Pump

A double-action high volume pump for gasoline, diesel fuel, heating oil and similar petroleum products. 8 ft. fuel-resistant hose with 3/4" fittings. Spark-resistant nozzle with steel and aluminum telescoping suction pipe and neoprene seal that permits use from 22" to 39". Delivers approximately 1 gallon per 9 strokes.

**55-200** Fits 30 – 55 gallon drum. Individually boxed.

**Replacement Parts** (not shown):

**55-291** Hose assembly, 8 ft. length, 3/4"-14 NPT.

### Hand Transfer Pump

Ideal for transfer from one container to another, also for draining oils and other fluids. Hand operated, self-priming. Great for farm, home, automotive and factory use. Heavy duty steel construction with durable VITON® O-rings. 8 ft. vinyl hose (.50" ID x .63" OD) for suction and discharge of fluids up to 90 wt. Double check valve.

**30-108** Approximately 1 gallon per 8 strokes. Individually boxed.



# Pumps

## Pull-Up Barrel Pumps

Feature die-cast head with garden hose threads and 18 gauge steel cylinder. Includes curved metal spout and adapter.

**55-017** Fits 30 – 55 gallon drum. Individually boxed.

## Lever Operated Barrel Pumps

### Heavy Duty Barrel Pump

2-piece telescoping suction tube fits 30 to 55 gallon drums. Dispenses approximately 10 oz. per stroke. With standard bung adapter, all steel foot valve and piston valve. Spout OD 3/4".

**55-123** With standard garden hose thread discharge spout.

**Replacement Parts** (not shown):

**55-123-03** Bung nut for 55-123.

### Professional Barrel Pump

Lever style barrel pump with non-drip spout. Equipped with brass rings and a floating piston design. Self-adjusting telescoping suction tube. Designed to pump all lubrication-based fluids, antifreeze, agricultural and industrial non-corrosive fluids. Dispenses approximately 10 oz. per stroke. Fits 30 – 55 gallon drum. 5 per master.

**55-124** With standard lever handle.

**55-125** With multidirectional handle.

**Replacement Parts** (not shown):

**99118** Spout, O-ring and non-drip end.

**99119** Bung.

**99122** Spout, standard.

## Pump Application Chart

**NOTE:** Plews/LubriMatic® pumps are not recommended for: acetone, ebenezene, cresol acid, ethyl, phenol, methyl ethyl, carbon tetrachloride, caustic soda, or hydrochloric, nitric and sulfuric acids/thinners.

Item No.	Type	Materials to be pumped	Materials not to be pumped
<b>30-108</b>	Hand held transfer pump style Steel construction VITON® O-ring & vinyl hose	Oil-based fluids	Water-based fluids, solvents, weak acids, antifreeze, gasoline* / diesel fuel
<b>55-017</b>	Rod style Steel piston / valves No rubber packing or sleeves	Oil-based fluids	Water-based fluids, weak acids, antifreeze, gasoline* / diesel fuel
<b>55-123</b>	Lever style Steel piston / valves	Oil-based fluids	Water-based fluids, solvents, weak acids, antifreeze, gasoline* / diesel fuel
<b>55-124</b> <b>55-125</b>	Lever style Steel piston / brass rings	Oil-based fluids Antifreeze Windshield washer fluid	Water-based fluids, solvents, weak acids, gasoline* / diesel fuel
<b>55-200</b>	Diaphragm style Push / pull lever	Oil-based fluids, like heating oil and other petroleum products Gasoline* / diesel fuel	Water-based fluids, solvents, weak acids
<b>55-303</b>	Rotary style, cast iron	Oil-based fluids	Water-based fluids, solvents, weak acids, antifreeze, gasoline* / diesel fuel
<b>55-140</b>	5 gallon pail pump	Light oils to gear oils	Water-based fluids, solvents, weak acids, antifreeze, gasoline* / diesel fuel

\*Gasoline is oil-based. However, it is explosive and dangerous to pump.

Viton® is a registered trademark of DuPont Performance Elastomers L.L.C.



55-017

55-123

55-124  
55-125

## Helpful Hints

**Water-based materials attack unplated steel (rust).**

**Solvents attack lubricated parts (break down lubricants), and also attack rubber parts (dissolve rubber).**

**Acids attack nickel plating and unplated steel (corrosion).**

**Polypropylene and nylon are resistant to some chemicals (see chart).**

# Pumps

## Plastic Barrel Pumps

### Rotary Barrel Pump

Fits 5 – 55 gallon drums. Ryton® construction with Teflon® seals enable this pump to be used with fuel, water base and acidic solutions. Delivers 7 gallons per 100 revolutions. Spout OD 1-1/16".

**55-150** Individually boxed. 1 per master.

### Lever Barrel Pumps

Fit 5 – 55 gallon drums. Ideal for fuel, water base and acidic solutions. Individually boxed. 9 oz. per stroke. 1 per master. Spout OD 7/8".

**55-160** Blue. General purpose.

**55-161** Yellow. Standard duty.

## Recommended Usage

Item No.	Materials
<b>55-150</b>	Acids, alkalines, gasoline, diesel, machine oil, water, alcohol, thinners & petroleum-based products
<b>55-160</b>	Water, alcohol, gasoline, diesel, kerosene & petroleum-based products
<b>55-161</b>	Water, water-based chemicals, alcohol, kerosene, gasoline, diesel, petroleum-based products, mild acid & mild alkali solutions



## Pistol Oilers

### Epoxy Finish Pistol Oilers

Drawn steel bodies. Rugged epoxy finish resists rust.

- 6 oz. size available with or without base holder.
- Rigid spouts have .15" diameter ledge-cone machined tips to lift oil filler dust caps. Note: rigid spouts are non-detachable.
- All flex spouts are zinc plated and detachable with a base thread of 1/4"-28.

**50-509CC** 6 oz. capacity with 6" rigid spout. Case-cut box. 10 per master.

**50-515** 6 oz. capacity with base holder and 6" rigid spout. 10 per master.

**50-516** 6 oz. capacity with base holder and 6" flex spout. 10 per master.

**50-573** 1 pint capacity with 6" flex spout. 24 per master.

**50-583** 1 quart capacity with 6" rigid spout. 21 per master.

### Plastic Pistol Oilers

**50-590** 6 oz. capacity with 4-1/2" rigid spout. Case cut box. 6 per master.

**50-592** 6 oz. capacity with 7-1/2" flexible spout. Case cut box. 6 per master.

### Economy Pistol Oiler

**50-595** 8 oz. capacity pistol oiler. Easy one-hand operation. Equipped with 6" flexible spout. 6 per case cut carton.

## Handled Oilers

### Epoxy Finish Handled Oilers

Heavy duty, drawn steel bodies. Durable epoxy finish bodies resist rust.

- Zinc-plated, detachable rigid and flex spouts with 1/2"-20 thread base.
- Rigid spouts have a ledge-cone machined tip to lift oil filler dust caps. Note: rigid spouts are non-detachable.
- Flex spout detachable tip threaded 10-32 with closure cap.

**50-337** 1 pint capacity with 9" flex spout. 5 per master.

**50-347** 1 quart capacity with 9" flex spout. 24 per master.

## Oiler Dimensions

Item No.	Body Height	Body Width	Body + Spout Width
50-337	5-1/2"	3-1/2"	10-3/4"
50-347	6-1/4"	4-1/2"	10"
50-509CC	5"	2-1/16"	7"
50-515	5-1/4"	2-7/8"	7-1/2"
50-516	5-1/4"	2-7/8"	8-1/2"
50-573	8-1/4"	3-1/8"	9-3/4"
50-583	9"	4-3/8"	9-3/4"
50-590	4-1/4"	3"	6-7/8"
50-592	4-1/4"	3"	10-1/4"
50-595	5-1/4"	2-5/8"	8-1/2"



# Adhesive Guns / Filter Wrenches

## Adhesive Guns

Feature zinc die-cast spouts, zinc-plated spouts and heavy duty triggers. Spout tips have 12-32 threads. Spout bases have 3/8"-24 threads. Brush tip available. Durable epoxy finish bodies. Pump most non-corrosive fluid which will seek its own level. Not recommended for water-based adhesives. Tip ID .055".

- 30-955** 1 pint with 4" spout. 50 per master.
- 30-960** 1 pint with long adapter. 50 per master.
- 30-962** 6-3/4" pump and adapter. 50 per master.

**Replacement Parts** (not shown):

- 99-619** Brush tip.

## Handled Filter Wrenches

### Economy Standard Filter Wrenches

Standard fixed handle with vinyl grip. 6 per master.

- 70-535** Fits 2-9/16" – 3-1/8" (65 – 79 mm).
- 70-536** Fits 3-1/2" – 3-7/8" (89 – 98 mm).

### Economy Adjustable Filter Wrench

4-way adjustable band fits a wide range of sizes. Wide band prevents crushed filters. 10 per master.

- 70-805** Fits car and truck, small and large filters from 2-3/4" – 4" (70 – 102 mm).

### Pro-Tuff® Standard Filter Wrenches

Extra heavy duty construction. Feature a tough extra wide oil-resistant cushioned handle with finger grips for a non-slip grip, and a heavy duty 1" studded steel band. 5 per master.

- 70-605** **Large**, fits 3-1/2" – 3-7/8" (89 – 98 mm).
- 70-607** **Truck**, fits 4-1/8" – 4-1/2" (105 – 114 mm).
- 70-609** **Truck/Tractor**, fits 4-3/4" – 5-1/8" (120 – 130 mm).
- 70-611** **Tractor**, fits 5-3/8" – 5-3/4" (136 – 146 mm).

## Swivel Filter Wrenches

### Economy Swivel Filter Wrenches

For hard-to-reach jobs. Feature a swivel handle with vinyl grip to easily clear obstructions. 6 per master.

- 70-537** Fits 3-1/2" – 3-7/8" (89 – 98 mm).
- 70-538** Fits 2-9/16" – 3-1/8" (65 – 79 mm).
- 70-539** Fits 2-1/4" – 2-1/2" (57 – 63 mm).

### Pro-Tuff® Swivel Filter Wrenches

Extra heavy duty construction with studded steel band. Feature a lock nut for setting angles and tightening handle and a tough non-slip grip. These wrenches with their swivel handle design make removing hard-to-reach filters easy. 1" band.

- 70-621** **Compact**, fits 2-1/4" – 2-9/16" (57 – 65 mm). 10 per master.
- 70-623** **Small**, fits 2-13/16" – 3-5/32" (71 – 80 mm). 10 per master.
- 70-625** **Large**, fits 3-1/2" – 3-7/8" (89 – 98 mm). 10 per master.
- 70-627** **Truck**, fits 4-1/8" – 4-1/2" (105 – 114 mm). 5 per master.



30-955

30-960

30-962



70-535  
70-536

70-805



70-605  
70-607  
70-609  
70-611



70-537  
70-538  
70-539



70-621  
70-623  
70-625  
70-627

# Filter Wrenches

## Band Filter Wrenches

Low profile design for easy access to hard-to-reach filters. Heavy duty hardened link and studded steel band. Use with drive extension.

### Pro-Tuff® 3/8" Ratchet Drive – 1" band

**70-635** Small, fits 2-13/16" to 3-5/32" (71 – 80 mm). 10 per master.

**70-639** Large, fits 3-1/2" to 3-7/8" (89 – 98 mm). 10 per master.

### Pro-Tuff® Heavy Duty Truck 1/2" Ratchet Drive – 2" band

**70-761** Fits 4-1/8" to 4-21/32" (105 – 118 mm). 5 per master.  
For Ford/International 6.9, 7.1 and most Mack engine filters.

**70-763** Fits 4-21/32" to 5-5/32" (118 – 131 mm). 5 per master.

**70-765** Fits 5-5/32" to 5-21/32" (131 – 143 mm). 1 per master.

## Cap Style Aluminum Filter Wrenches

Multi-flute stepped design allows cap wrenches to fit most auto and light truck applications. High quality cast aluminum construction. Use with 3/8" square drive, 7/8" or 1" open/combination wrench. Compact design fits in places most other wrenches can't. 5 per master.

**70-781** **Mini**, fits 2-27/32" (65 – 68 mm) diameter filters. 2-step design fits O.E. and replacement 14 flute oil filters found on Toyota, Chevrolet Nova, Mazda, popular lawn and garden applications, and others.

**70-783** **Small**, fits 3" (74 – 76 mm) diameter filters with 14 or 15 flutes found on many lawn and garden applications.

**70-779** **Mid-Size**, fits most 3-5/32" (80 mm) diameter filters with 15 or 30 flutes.

**70-785** **Large**, fits 3-21/32" (93 mm) diameter filters with 15 or 36 flutes found on many GM, Ford and Chrysler vehicles.

## Miscellaneous Filter Wrenches

### Pliers-Style Filter Wrench

Comfortable vinyl grips and black oxide finish. Special slip-joint handle. 20° jaw angle and slim pliers design gets into areas other wrenches can't. 5 per master.

**70-746** Fits 2-1/2" to 4-5/8" (63 – 116 mm).

### Nylon Strap Oil Filter Wrench

Sturdy, non-slip nylon belt with 1/2" square drive. 5 per master.

**70-719** Fits filters up to 6".

### Bi-Directional Filter Wrench

2-way filter wrench removes and installs oil filters. Fits most domestic and imported cars and trucks. Designed to fit where standard wrenches can't. Use with 3/8" square drive or 7/8" open/combination wrench. Patent No. 4,532,835. 5 per master.

**70-715** Fits 2-13/16" to 3-5/32" (71 – 78 mm).

70-635  
70-639



70-761  
70-763  
70-765



70-781  
70-783  
70-779  
70-785



70-746



70-719



70-715



# Funnels

## Steel Galvanized Funnels

Capacity indicates what the funnels will hold when the outlet is blocked.

- 75-001** Utility, 1 quart capacity, 7" total height, 6" diameter, 3/4" OD tip. 12 per master.
- 75-002** Offset, 5 quart capacity, 11" total height, 10" diameter, 1-1/4" OD tip with screen. 6 per master.
- 75-003** Utility, 2 quart capacity, 8" total height, 8" diameter, 3/4" OD tip. 6 per master.
- 75-004** Regular tractor, 8 quart capacity, 12" total height, 9-1/2" diameter, 1" OD tip with screen. 6 per master.
- 75-008** Lock-on tractor, 8 quart capacity, 11-1/2" total height, 10" diameter, 1-1/4" OD tip with screen and tabs. 6 per master.
- 75-017** 7 pint capacity, 8-3/4" total height, 9-3/4" diameter, 3/4" OD tip. 12 per master.

## Utility Funnels

Lightweight, general purpose steel funnels. Capacity indicates what the funnel will hold when the outlet is blocked. 12 per master.

- 75-009** 10 oz. capacity, 5-1/2" total height, 4-1/2" diameter, 1/2" OD tip.
- 75-010** 24 oz. capacity, 6-1/2" total height, 5-3/4" diameter, 1/2" OD tip.
- 75-011** 32 oz. capacity, 7-1/2" total height, 6-1/2" diameter, 3/4" OD tip.
- 75-012** 56 oz. capacity, 9" total height, 8" diameter, 1" OD tip.

## Funnel Fillers

### Transmission Funnel Fillers with Screen

Rugged epoxy finish steel. Offset design, 2 quart capacity. 7" diameter. Includes fine mesh strainer screen. 5 per master.

- 75-005** With 2" (1" OD) rigid tip.
- 75-006** With 17" flexible metal extension and 1/2" OD tapered tip to fit transmission tubes, etc., 28" overall length.



75-001



75-002



75-003



75-004



75-008



75-017



75-009  
75-010  
75-011  
75-012



75-005



75-006

# Funnels

## Funnel Fillers

### Utility Funnel with Screen

The most popular all-purpose fluid dispenser. Ideal for transmission fluid. Galvanized steel. Includes screen and 12" flexible extension with tapered tip.

**75-007** 1 quart capacity, 5-3/4" funnel diameter, 17-1/2" overall length. 10 per master.

### Economy Utility Funnel Filler

Complete with a 13" flexible neoprene hose. 1/2" OD tip.

**75-101** 1/2 pint capacity, 4-1/2" diameter, 17" overall length. 10 per master.

## Plastic Funnels

### Economy Utility Funnels

Durable, oil and gasoline resistant plastic. Safe for all petroleum products, complete with handy storage hanging tabs. Capacity indicates what the funnel will hold when the outlet is blocked.

**75-060** 8 oz. capacity, 5" total height, 4-1/2" diameter, 1/2" OD tip. 20 per master.

**75-062** 16 oz. capacity, 5-1/2" total height, 6" diameter, 3/4" OD tip. 24 per master.

**75-064** 48 oz. capacity, 7" total height, 8" diameter, 1" OD tip. 24 per master.

### Super Funnel

All-purpose utility funnel. Extra long neck to reach out-of-the-way spots.

**75-068** 2 quart capacity, 18" overall length, 5" diameter, 1/2" OD tip. 12 per master.

### Polyethylene Plastic Funnels

Rugged, corrosion-resistant, all-purpose funnels. Complete with fine mesh straining screen and handy hanging tab. Capacity indicates what the funnel will hold when the outlet is blocked.

**75-069** 1 pint capacity, 5.1" total height, 5.5" diameter. Includes screen. 10 per master.

**75-070** 2 quart capacity, 9" total height, 7" diameter, 1" OD tip. 10 per master.

**75-072** 6 quart capacity, 11" total height, 9" diameter, 1-1/2" OD tip. 5 per master.



# Funnels / Measures

## Plastic Funnels

### 2-Piece Funnel with Flexible Spout

A multi-purpose 2-piece funnel with 12" detachable flexible spout. The funnel includes an easy-grip handle.

**75-074** 15" overall length, 6" diameter with 3/4" OD tip.  
12 per master.

### 3-Piece Funnel Set

**75-075** Includes 1/2 pint, 1 pint, 2 pint plastic funnels.  
12 per master.

### Easy-Pour Flex Spout

Multi-purpose flexible funnel spout for automotive, home, farm, marine and more. 2 thread sizes to fit most containers. Screws on to motor oil, antifreeze, windshield washer fluid and similar plastic containers. Tough plastic construction won't mar or scratch. Complete with stopper cap and hang tab.

**60-200** 9-1/4" length with 3/4" OD tip. 10 per master.

## Galvanized Measures

Deluxe measures with spill-proof tops. Flexible spouts for ease of pouring. Rolled edge, easy-grip handles. Calibrated fill line. 1/2" OD tip. 6 per master.

**75-441** Flexible spout, 1 quart capacity, 6-1/2" overall height.

**75-442** Flexible spout, 2 quart capacity, 9-1/2" overall height.

**75-444** Flexible spout, 4 quart capacity, 11" overall height.

## Plastic Measures

Marked in quarts and liters. Easy-grip handle. Rigid spout is angled for ease of pouring.

**75-452** 2 quart capacity, 1" OD spout. 10 per master.

**75-454** 4 quart capacity, 1" OD spout. 10 per master.

**75-456** 6 quart capacity, 1-1/4" OD spout. 10 per master.

## Painted Measures

With flexible spouts. Designed for one-hand operation. Thumb operated valve controls flow; flip action locks valve open. 14" flexible metal spout with tapered 1/2" OD tip swings into the necessary angle for hard-to-reach jobs. Recessed bottoms drain fully and guard against puncture. Rolled edge top helps prevent oil spillage. 1 per master.

**75-662** Flexible spout, 2 quart capacity, 8" overall height.

**75-664** Flexible spout, 4 quart capacity, 9-1/2" overall height.

**75-665** Flexible spout, 5 quart capacity, 9-1/2" overall height.

**75-668** Flexible spout, 8 quart capacity, 11-1/2" overall height.



75-074



75-075



60-200



75-452  
75-454  
75-456



75-441  
75-442  
75-444



75-662



75-664



75-665



75-668



# Containers

## Galvanized Containers

### Radiator Drain Pan

Heavy duty galvanized steel. Pouring with anti-splash baffle prevents spilling. Rolled smooth edge and ribbed bottom for heavy duty strength. Includes handles.

**75-750** 6 gallon capacity, 19" diameter x 6" high. 2 per master.

### Utility Drain Pan

Seamless, full drawn galvanized steel. Rolled rim and ribbed bottom for extra strength.

**75-751** 3-1/2 gallon capacity, 16" diameter x 4" high. 12 per master.

### Drip Pan

Rugged galvanized sheet metal construction. Rust-resistant. Protects driveways, garage or automotive show room floors from fluid drippings. Rolled edges for extra strength.

**75-755** Large 17-1/2" x 25-3/4" x 1" high. 10 per master.

### Water Pail

Made of rust-resistant galvanized sheet metal.

**75-825** 12 quart capacity, 11" diameter x 9-1/2" high. 6 per master.

## Plastic Containers

### Tire and Tube Test Tank

Rugged high density polyethylene plastic construction. Large enough to handle passenger car and light duty truck tires. Lip doubles as a splash guard and easy carrying handle. Tire punctures are easy to spot against black plastic tank.

**75-754** 31" x 12" x 12" size. 1 per master.

### Plastic Drain Pan

With pouring lip. Will not rust, dent or scratch, easy cleaning.

**75-760** 6 quart capacity, 13" diameter x 4" high. 10 per master.

### Plastic Drain Pan

Tough polyethylene construction that won't rust, dent or scratch. Pouring spout and handle allow for easy, spill-free pouring. Rolled edge cuts down on splash, makes for ease of carrying while full. Handle can also be used to push pan under vehicle. Easy to clean.

**75-762** 4 gallon capacity, 18" diameter x 5-1/2" high. 4 per master.



75-750



75-751



75-755



75-825



75-754



75-760



75-762

# Lift Drains & Accessories

## Oil Lift Drains

### 16 Gallon Lift Drain

For use with 16 gallon/120 lb. open head drums (**drum not included**). Includes telescopic funnel and tube (adjusts from 40-1/2" to 60"), float assembly, drum cover assembly and heavy duty caster base.

**75-835** 16 gallon capacity. 1 per master.

### 5 Gallon Lift Drain

Telescopic tube adjusts to desired height from 40-1/2" to 60" with 13-1/2" diameter funnel. Comes complete with heavy duty 5 gallon container, telescopic tube and sturdy funnel.

**75-837** 5 gallon capacity. 1 per master.

#### Replacement Parts:

**75-837-02** Replacement tube and funnel assembly.

## Plastic Oil Lift Drains

Sturdy plastic lift drains equipped with wheels, metal drain tube and drain pan with screen. 1 per master.

**75-850** 8 gallon capacity. Height adjusts from 48" to 63".

#### Replacement Parts:

**75-853** Replacement tube and funnel assembly.

## Lift Drain Accessories

### Lift Drain Dollies

Heavy steel construction with baked enamel finish, ball bearing type swivel casters. All hardware included.

**75-834** 11-1/2" diameter band type frame fits all standard 5 gallon lubrication drums. 1 per master.

**75-835-04** 13-1/4" diameter band type frame fits all standard 16 gallon/120 lb. lubrication drums. 1 per master.

**75-838** Cross frame style lift drain dolly which fits the Plews/LubriMatic® 75-837 lift drain. 1 per master.



## Oil Lift Drain Accessories

### Transmission Pan Adapter

For lift drains. Heavy duty, high density polyethylene. Small diameter drain holes in bottom of pan prevent loss of pan bolts. Fits all Plews/LubriMatic® and other popular lift drains.

**75-836** Large 24" diameter size. 6 per master.

### Drum Funnel

1-piece, 3 quart capacity funnel attaches to 2" bung hole in 15 to 55 gallon drums. Used to fully drain oil bottles, filters, antifreeze or any fluid to be poured and contained in a 15 to 55 gallon drum.

**75-849** 7-1/2" diameter. 5 per master.

### Barrel Funnel Assembly

Handy funnel attaches to 2" bung hole in 15 to 55 gallon drums. Used to fully drain oil bottles, filters, antifreeze or any fluid to be poured and contained in a 15 to 55 gallon drum.

**75-839** 13-1/2" diameter. 4 per master.

## Battery & Radiator Fillers

### Plastic Radiator Fillers

Tough polyethylene won't damage automotive finishes. Impervious to oil, gasoline and antifreeze. Will withstand normal temperature extremes.

**75-025** 3 gallon capacity. 4 per master.

### Professional Battery Filler

Shuts off automatically when battery cell is at proper level, no over filling. Features the double action fast flow valve tip that prevents after-drip. Stops surface discharge caused by a wet battery.

Tough, polyethylene. Safe to use with battery acid.

**75-030** 2 quart capacity. 10 per master.

**99-038** Spout tip only. 25 per master.

### Syringe Battery Filler

Ideal for all fluids, including battery acid. Rubber bulb remains pliable in cold weather.

**75-033** 6 oz. capacity with 6" flex spout. 10 per master.

### Siphon Hose

Multi-purpose all rubber siphon hose. Rubber bulb makes it easy to start flow of liquid. Ideal for home, garden, boat, shop or garage. Transfers, drains or pumps all types of liquids including gasoline.

**75-847** 6 ft. length. 10 per master.



75-836



75-849



75-839



75-025



75-033



99-038

75-030



75-847

# Grease Fittings

## Grease Fitting Tools

### Large 4-way Grease Fitting Tool

Designed for 1/8" NPT fittings. Tap repairs 1/8" NPT threads. Wrench removes 7/16" and 3/8" hex fittings and plugs. Wrench installs new fittings. 1/8" NPT "easy-out" removes broken fittings.

**11-902** Bulk packaged. 25 per master.

### Small 4-way Grease Fitting Tool

Designed for 1/4"-28 and 6 mm fittings. Tap repairs 1/4"-28 threads. Wrench removes 5/16" and 3/8" hex fittings and plugs. Wrench installs new fittings. 1/4"-28. "Easy-out" removes broken fittings.

**11-903** Carded. 10 per master.

### Straight Drive Grease Fitting Tool

For straight drive-in fittings; 4-1/2" long, 11/16" diameter.

**11-912** Carded. 5 per master.

### Angled Drive Grease Fitting Tool

For angled drive-in fittings; 4-1/2" long, 11/16" diameter.

**11-914** Carded. 5 per master.

## Grease Fitting Assortments

### Standard Grease Fitting Assortment – 8 Piece

1/4" -28 standard fittings on blister card. Includes 4 straight, 2 @ 45° angle and 2 @ 90° angle.

**11-955** Carded. 10 per master.

### Metric Grease Fitting Assortment – 8 Piece

6 mm x 1 metric fittings on blister card. Includes 4 straight, 2 @ 45° angle and 2 @ 90° angle.

**11-957** Carded. 10 per master.

### Pipe Thread Fitting Assortment – 50 Piece

1/8" grease fittings packed in transparent box. Includes 30 straight, 10 @ 45° angle and 10 @ 90° angle.

**11-954** 1 per master.

### Deluxe Fitting Assortment – 50 Piece

1/4" - 28 grease fittings packed in transparent box. Includes 30 straight, 10 @ 45° angle and 10 @ 90° angle.

**11-951** 1 per master.

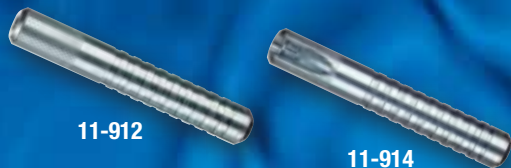
### Deluxe Fitting Assortment – 100 Piece

1/8" and 1/4" grease fittings packed in transparent box.

1/8" fittings include 30 straight, 2 @ 30° angle, 5 @ 45° angle, 5 @ 65° angle and 3 @ 90° angle.

1/4" fittings include 40 straight, 10 @ 45° angle and 5 @ 90° angle.

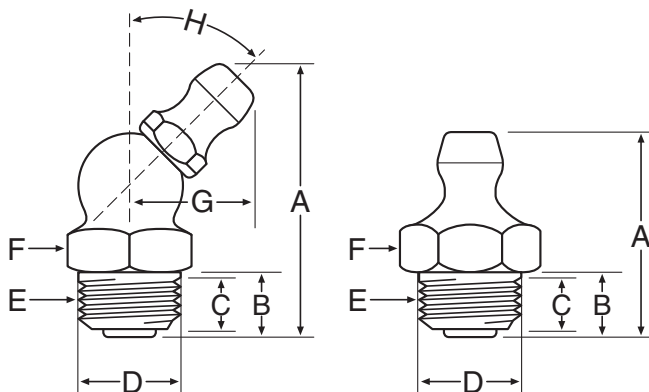
**11-953** 1 per master.



# Grease Fittings

## Sizes & Specifications

5 Pack	10 Pack	Box 50	Box 100	Box 1000	Description	A	B	C	D	E	F	G	H
<b>SAE FITTINGS</b>													
-	11-151	-	11-150	-	1/8" NPT straight, short	11/16	9/32	3/16	13/32	1/8 PT	7/16	-	-
11-159	-	-	11-218	-	1/8" NPT 45° angle	7/8	19/64	7/32	13/32	1/8 PT	7/16	27/64	45°
11-167	-	11-166	-	-	1/8" NPT 90° angle	27/32	19/64	7/32	13/32	1/8 PT	7/16	1/2	90°
11-201	-	-	11-226	-	1/4" NPT straight	7/8	13/32	9/32	17/32	1/4 PT	9/16	-	-
-	11-101	-	11-100	11-103	1/4"-28 straight, short	35/64	13/64	7/64	1/4	1/4-28	5/16	-	-
-	11-105	-	11-104	-	1/4"-28 45° angle	53/64	13/64	5/32	1/4	1/4-28	3/8	13/32	45°
-	11-113	11-112	-	-	1/4"-28 90° angle	49/64	13/64	5/32	1/4	1/4-28	3/8	1/2	90°
<b>METRIC FITTINGS</b>													
11-301	-	-	-	-	6 mm – 1.0 metric straight	19/32	1/4	3/32	15/64	6 mm-1P	7 mm	-	-
11-305	-	-	-	-	6 mm – 1.0 metric 90° angle	3/4	7/32	1/8	15/64	6 mm-1P	10 mm	1/2	90°
11-311	-	-	-	-	8 mm – 1.0 metric straight	5/8	1/4	3/32	5/16	8 mm-1P	9 mm	-	-
11-313	-	-	-	-	8 mm – 1.0 metric 45° angle	13/16	7/32	1/8	5/16	8 mm-1P	10 mm	25/64	45°
11-315F	-	-	-	-	8 mm – 1.0 metric 90° angle	3/4	7/32	1/8	5/16	8 mm-1P	10 mm	1/2	90°
11-321	-	-	-	-	10 mm – 1.0 metric straight	5/8	1/4	3/32	25/64	10 mm-1P	11 mm	-	-
<b>THREAD FORMING FITTINGS</b>													
-	-	-	-	11-432	1/4"-28 special taper drive	17/32	13/64	1/8	1/4	1/4-28	5/16	-	-
<b>DRIVE FITTINGS</b>													
-	-	-	-	11-448	1/4" straight drive	9/16	1/4	-	1/4	-	11/32	-	-





## Table of Contents

Grease Guns.....	2-4
Grease Gun Accessories.....	4-7
Pumps.....	7-10
Oilers.....	11
Adhesive Guns.....	12
Filter Wrenches.....	12-13
Funnels.....	14-16
Measures.....	16
Containers.....	17
Lift Drains.....	18
Fillers.....	19
Grease Fitting Tools & Assortments.....	20
Grease Fittings.....	21

## For More Information:

For complete product specifications and ordering instructions, contact your Plews/LubriMatic® sales representative, or visit us online at:

[www.plews-edelmann.com](http://www.plews-edelmann.com)

Also check out our latest catalogs featuring the biobased line of **UltraLube**® Professional-Grade Lubricants and the **LubriMatic**® line of Greases, Oils & Lubricants.

The Plews & Edelman® family of products –  
Professional quality for over 40 years!



# Product Lines

## **Amflo**

Air Line Accessories  
Pneumatic Hoses & Reels

## **Camel**

Tire Repair

## **Edelmann**

Automotive Fittings  
Brake Lines  
Engine Oil Cooler Lines  
Power Steering Hoses & Repair Kits  
Transmission Oil Cooler Lines & Fittings

## **LubriMatic**

Oils, Greases & Spray Lubricants

## **Plews/LubriMatic**

Lubrication Equipment

## **Powercraft**

Power Steering Hoses & Repair Kits

## **Syracuse**

Tire Gauges & Tools

## **Tru-Flate**

Air Line Accessories  
Tire Gauges & Hardware

## **UltraLube**

Biobased Lubricants

**PLEWS &  
EDELMANN**

**Amflo**®

**Camel**®

**EDELMANN**®

**LubriMatic**®

**PLEWS**®  
**LubriMatic**

**POWERCRAFT**®

**Syracuse**®

**TRU-FLATE**®

**Ultra**  
**LUBE**®



1550 Franklin Grove Road  
Dixon, IL 61021 USA  
Telephone: 800-770-4639  
Fax: 815-288-3388  
[www.plews-edelmann.com](http://www.plews-edelmann.com)

For more than 40 years, Plews-LubriMatic has been developing and distributing superior lubrication equipment. Part of the Plews & Edelmann family of products, Plews-LubriMatic serves the industrial, hardware, marine, automotive and agricultural markets, as well as many industries requiring professional grade lubricants and penetrants.



The leader in lubrication equipment and lubricants