

# RADIANS®

WORK HARD. STAY SAFE.®



COATED PALM



COLD WEATHER



PERFORMANCE



LEATHER DRIVERS



CUT PROTECTION



DEWALT

Hand Protection Catalog

# CATEGORIES



**COATED PALM**

**P.5**



**COLD WEATHER**

**P.8**



**PERFORMANCE**

**P.9**



**LEATHER DRIVERS**

**P.10**



**CUT PROTECTION**

**P.11**



**DYNEEMA® DIAMOND  
CUT PROTECTION**

**P.16**



**DEWALT HAND  
PROTECTION  
(ALL CATEGORIES)**

**P.20**

# HAND PROTECTION

Radians has aggressively expanded our line of hand protection to provide gloves that keep workers' hands protected from common workplace hazards. The National Safety Council estimates that the direct cost of a laceration is \$10,000 including care and missing six days of work, which is the average time off for a hand injury.

You can look to us for performance gloves that protect your workers' hands while not compromising comfort and dexterity. We offer a variety of materials and coatings for various job applications, including nitrile, latex, polyurethane coatings, and cut resistant fibers.



- Trusted Brand
- Worldwide Marketing Support
- Premium Designs



**RADIANS®**

- Uncompromisable Protection
- Quality Performance
- Innovative Solutions








# STANDARDS & TESTING

Standardized testing of gloves ensures that the proper glove can be selected based on the hazards present. Testing includes ratings for abrasion, cut, tear, and puncture. New versions of the EN388 and ANSI/ISEA 107 standards improve cut testing to rate much higher cut levels, align cut test results between ANSI and EN cut test methods, and add ratings for vibration and impact resistance.

## ANSI Cut Level Ratings

There are many kinds of cut hazards, and each one requires a different level of protection. Use the table below to help determine the cut level rating necessary for your work environment.

|   |   |
|---|---|
|    | <b>Nuisance Cuts</b><br>Paper cuts, automotive maintenance, parts assembly, material handling.            |
|    | <b>Low Cut Hazards</b><br>Construction, automotive assembly, packaging, some masonry applications.        |
|   | <b>Moderate Cut Hazards</b><br>Light metal stamping, light-duty glass handling applications.              |
|    | <b>High Cut Hazards</b><br>Metal stamping & casting, sheet metal, window & tile handling, meat & poultry. |

## EN388

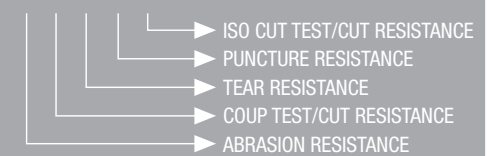
EN388



EN388 ratings are also noted on Radians hand protection. EN388 includes more specific information about the resistance to particular types of hazards you may encounter on the job. Look at the diagram to the left to reference which number corresponds to which hazard.

4 5 4 4 - Current Standard

4 X 4 4 X - New Standard



## Palm Coatings

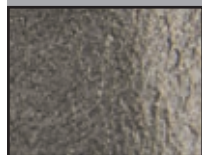
To address specific work-related hand protection issues, Radians uses several different types of palm coatings: smooth nitrile, foam nitrile, sandy foam nitrile, foam latex, sandy foam latex, crinkle latex, and PU polyurethane. Palm coatings allow for better gripping capabilities and tactile sensation without losing dexterity.

### DEFINITIONS/APPLICATIONS:



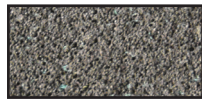
#### SMOOTH NITRILE

Smooth/Flat gloves do not have any texture on the surface of the glove. They provide excellent resistance to abrasion, snags, and perforation. Made of synthetic rubber, they are latex-free with no natural rubber proteins. Excellent puncture resistance, tactile sensitivity, and flexible grip.



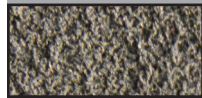
#### FOAM NITRILE

Micro texture is the most common and lightest form of texturing for nitrile gloves. This texture is suitable for gripping small objects or tools in wet or dry applications. Breathable, flexible and porous, foam nitrile will channel oil and water away from surface quickly. Excellent resistance to abrasion, snags and perforation. Made of synthetic rubber, foam nitrile gloves are latex-free with no natural rubber proteins.



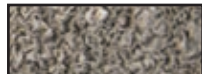
#### SANDY FOAM NITRILE

Roughened texture finish. The sandy-like finish on these gloves increases abrasion resistance and improves grip. They are good for wet, dry or oily applications. Made of synthetic rubber, these gloves are latex-free with no natural rubber proteins.



#### FOAM LATEX

Texture that offers better breathability and comfort. Excellent flexibility and resistant to tears and cuts. Good for wet or dry applications.



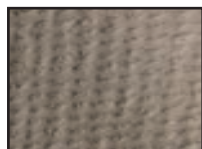
#### SANDY FOAM LATEX

Micro roughened texture for better breathability and comfort. Excellent flexibility and resistant to tears and cuts.



#### CRINKLE LATEX

Rough textured for better grip and abrasion. Latex gloves are natural material, made out of rubber. They offer excellent flexibility and protection from tears and cuts.



#### PU (POLYURETHANE)

Semi-smooth texture is extremely flexible and provides superior dexterity and sensitivity. A PU coating can be silicone free and has a low-particulate shed, which reduces risk of contamination from the dip itself. The coating "strikes through" onto the inside of the glove, which can lead to heat retention and sweating. Not as durable as nitrile or latex, PU gloves can be used for inside light duty, detailed assembly, inspection, light fabrication, and box/small parts handling.

**DEWALT****GEAR****RADIANS**

# MERCHANDISING

## GLOVE HANG TAG PROGRAM

For Fast, Easy, and Professional Retail Display of Radians Gloves at Industrial Storefronts.

**FAST** Five business day turnaround.

**EASY** You can place an order for a case of “tagged” gloves just as you would place an order for a case of “untagged” gloves.

**ECONOMICAL** Our program is competitively priced. Radians provides and attaches hang tags for an additional \$1.80 per dozen.

### Minimum Order Requirement is One Case

The minimum order is a case and the gloves in that case can include bulk packs of a dozen in multiple sizes. Keep in mind some of our cases include 72 gloves and some cases include 120 gloves. After a case is ordered, you may order more gloves by the dozen. Many of our competitors will only sell by the case, but Radians is more flexible allowing for dozen bulk pack purchases after the minimum case requirement has been satisfied.



**DB-DPG737**  
Holds 54 pair DPG737



**9525**  
Works as a Wall (48 Pairs)  
or Table Top (24 Pairs)  
Display, Available for  
Radians or DEWALT



**DB-DPG70**  
Holds 96 pair DPG70



**DB-DPG740**  
Holds 48 pair DPG740



**DPWG-FD20**  
Available for  
Radians or  
DEWALT



POLYURETHANE PALM COATING/NITRILE PALM COATING

# COATED PALM GLOVES

## RWG19 XS-2XL

- Touchscreen
- 18 Ga Black Poly Shell
- Black PU Coating



EN388:2003



2 1 1 0  
2 - Abrasion  
1 - Cut  
1 - Tear  
0 - Puncture

Individually Polybagged

## RWG11 S-2XL

- 15 Ga Gray Nylon Shell
- Micro-Foam Nitrile Palm Dip
- Anti-Slip Nitrile Dotted Coating



EN388:2003



4 1 3 2  
4 - Abrasion  
1 - Cut  
3 - Tear  
2 - Puncture

Meets ANSI/ISEA 105:2016



ABRASION



EN388:2003



4 1 3 1  
4 - Abrasion  
1 - Cut  
3 - Tear  
1 - Puncture

Meets ANSI/ISEA 105:2016



ABRASION

## RWG14 S-2XL

- 13 Ga Gray Polyester Shell
- Gray PU Coating



EN388:2003



3 1 3 1  
3 - Abrasion  
1 - Cut  
3 - Tear  
1 - Puncture

Meets ANSI/ISEA 105:2016



ABRASION

## RWG22 XS-2XL

- 13 Ga Hi-Viz Yellow Polyester
- Yellow PU Coating

# COATED GLOVES



## NITRILE PALM COATING

### RWG12 S-2XL

- 15 Ga Gray Nylon Shell
- 3/4 Micro-Foam Dipped Nitrile
- Anti-slip Nitrile Dotted Coating



4 1 3 2  
4 - Abrasion  
1 - Cut  
3 - Tear  
2 - Puncture

Meets ANSI/ISEA



### RWG13 S-2XL

- 15 Ga Gray Nylon Shell
- Foam Nitrile Palm Coating



4 1 3 1 X  
4 - Abrasion  
1 - Coup Test/Cut  
3 - Tear  
1 - Puncture  
X - ISO Cut Test

Meets ANSI/ISEA



### RWG15 S-2XL

- 13 Ga Black Polyester Shell
- Gray Smooth Nitrile Coating



4 1 2 1  
4 - Abrasion  
1 - Cut  
2 - Tear  
1 - Puncture

Meets ANSI/ISEA



### RWG20 S-2XL

- 15 Ga Nylon/Spandex
- Black 3/4 Micro-Foam Nitrile Coating



4 1 2 1  
4 - Abrasion  
1 - Cut  
2 - Tear  
1 - Puncture

Meets ANSI/ISEA



NITRILE PALM COATING/LATEX PALM COATING

## RWG21 S-2XL

- 13 Ga Hi-Viz Yellow Nylon
- Black Foam Nitrile Coating
- TPR On Back



U.S. Pat. No. 9,241,519



4 1 4 1

- 4 - Abrasion
- 1 - Cut
- 4 - Tear
- 1 - Puncture

Meets ANSI/ISEA 105:2016



ABRASION

## RWG10 S-XL

- 15 Ga Hi-Viz Nylon Shell
- Micro-Foam Latex Coating
- Elastic Cuff



2 1 3 1

- 2 - Abrasion
- 1 - Cut
- 3 - Tear
- 1 - Puncture

Meets ANSI/ISEA 105:2016



ABRASION

**CAUTION**  
Product Contains Latex

## RWG18 S-2XL

- 13 Ga Orange Nylon Shell
- Full Orange Waterproof Latex Coating
- Black Sandy Foam Latex Palm Dip



**CAUTION**  
Product Contains Latex



3 1 3 1

- 3 - Abrasion
- 1 - Cut
- 3 - Tear
- 1 - Puncture

Meets ANSI/ISEA 105:2016



ABRASION

## RWG16 S-2XL

- 10 Ga Gray Polyester Shell
- Blue Crinkle Latex Coating



**CAUTION**  
Product Contains Latex



2 2 4 2

- 2 - Abrasion
- 2 - Cut
- 4 - Tear
- 2 - Puncture

Meets ANSI/ISEA 105:2016



ABRASION



RADIANS  
**COLD  
WEATHER  
GLOVES**



**RWG800** S-2XL

- REFLECTIVZ™ Waterproof Plated Thermal Lined Palm
- Synthetic Leather Nail Guards
- Reflective Knuckle Strap
- Wraparound Index Finger Seam



U.S. Patent No. 9,241,519

**RWG604** S-2XL

- 2 Ply 13 Ga Pepper HPPE Outer Shell
- 7 Ga Terry Acrylic Inner Shell
- Black Foam Nitrile Palm Coating
- TPR Overlays on Fingers and Back

**RWG17** S-2XL

- 3/4 Dipped Micro Finish Black Latex Coating
- 2 Ply Water Resistant 13 Ga Orange High Visibility
- Nylon Outer Shell
- 7 Ga Acrylic Terry Liner



Meets ANSI/ISEA 105:2016



**CAUTION**  
Product Contains Latex

**RWG27** S-2XL

- 7 ga Hi-Viz Yellow Polyester Shell
- Blue Crinkle Latex Palm Coating
- Liner: 80% Acrylic 20% Polyester
- EN511-2006 Test Against Cold Contact Achieved Performance Level 1 Thermal Resistance



**CAUTION**  
Product Contains Latex



# PERFORMANCE GLOVES

## COLD WEATHER GLOVES

### RWG28 M-2XL

- 13 Ga Gray Nylon Shell
- 10 Ga Acrylic Liner
- Full Gray Waterproof Latex Coating
- Black Sandy Foam Latex Palm Dip

EN388:2016



- 2 - Abrasion
- 2 - Coup Test/Cut
- 3 - Tear
- 2 - Puncture
- X - ISO Cut Test

2 2 3 2 X



X 2 X

Meets ANSI/ISEA

105:2016



CUT/736g



**CAUTION**  
Product Contains Latex

### RWG605 S-2XL

- 2 Ply 13 Ga Blue and White HPPE Outer Shell
- 7 Ga Acrylic Terry Liner
- Waterproof Blue Smooth Latex Coating
- Black Foam Latex Palm Coating

EN388:2003



- 4 - Abrasion
- 5 - Cut
- 4 - Tear
- 4 - Puncture

4 5 4 4

Meets ANSI/ISEA 105:2016



CUT/1888g ABRASION PUNCTURE



**CAUTION**  
Product Contains Latex



### RWG100 M-2XL

- Padded Double Layer Synthetic Palm
- Reinforced and Reflective Fingertips
- Easy Fit Open Cuff Design
- Silver Reflective Tape
- Reflective Pull Strap



### FR-RWG700 S-2XL

- Synthetic FR Work Glove
- 300GSM Kevlar Laminated Liner
- Kevlar Thread and Elastic Shirred Wrist
- FR Synthetic Leather Pull Strap



# LEATHER GLOVES



## RWG51 M-2XL

- White Grain Goat Skin Driver
- TPR Overlays
- Slip-On Cuff
- Keystone Thumb



U.S. Patent No. 9,241,519

## RWG52 S-2XL

- White Grain Goat Skin Driver
- Aramid Lining
- Slip-On Cuff
- Keystone Thumb



3 5 2 3  
3 - Abrasion  
5 - Cut  
2 - Tear  
3 - Puncture

## RWG50 S-2XL

- White Grain Goat Skin Driver
- Aramid Lining
- TPR Overlays
- Slip-On Cuff
- Keystone Thumb

EN388:2003



3 5 2 3  
3 - Abrasion  
5 - Cut  
2 - Tear  
3 - Puncture

Meets ANSI/ISEA 105:2016

|           |          |          |
|-----------|----------|----------|
| <b>A4</b> | <b>3</b> | <b>4</b> |
| CUT/1851g | ABRASION | PUNCTURE |

Meets ANSI/ISEA 105:2016

|           |          |          |
|-----------|----------|----------|
| <b>A4</b> | <b>3</b> | <b>4</b> |
| CUT/1851g | ABRASION | PUNCTURE |

U.S. Patent No. 9,241,519



POLYURETHANE PALM COATING



# CUT PROTECTION GLOVES

## RWG531 S-2XL

- Materials Compliant with FDA 21 CFR 177.152
- 13 Ga Hi-Viz Yellow HPPE Shell
- Water Based PU Coating



Made with FDA accepted material for use in food processing

Individually Polybagged



EN388:2003

|              |         |          |              |
|--------------|---------|----------|--------------|
| 4            | 3       | 4        | 4            |
| 4 - Abrasion | 3 - Cut | 4 - Tear | 4 - Puncture |

Meets ANSI/ISEA 105:2016

|          |          |          |
|----------|----------|----------|
| A2       | 2        | 5        |
| CUT/960g | ABRASION | PUNCTURE |



Meets ANSI/ISEA 105:2016

|          |          |          |
|----------|----------|----------|
| A2       | 1        | 4        |
| CUT/616g | ABRASION | PUNCTURE |

EN388:2003

|              |         |          |              |
|--------------|---------|----------|--------------|
| 4            | 3       | 4        | 3            |
| 4 - Abrasion | 3 - Cut | 4 - Tear | 3 - Puncture |

## RWG530 S-2XL

- 13 Ga Salt and Pepper HPPE Shell
- Polyurethane Coating



Individually Polybagged

Meets ANSI/ISEA 105:2016

|          |          |          |
|----------|----------|----------|
| A2       | 1        | 3        |
| CUT/620g | ABRASION | PUNCTURE |

EN388:2016

|              |                   |          |              |                  |
|--------------|-------------------|----------|--------------|------------------|
| 4            | 2                 | 4        | 2            | B                |
| 4 - Abrasion | 2 - Coup Test/Cut | 4 - Tear | 2 - Puncture | B - ISO Cut Test |

## RWG550 XS-2XL

- 13 Ga White HPPE Shell
- Polyurethane Dip

## RWG561 XS-2XL

- 18 Ga Gray HPPE
- Black PU Coating



EN388:2003

|              |         |          |              |
|--------------|---------|----------|--------------|
| 4            | 5       | 3        | 2            |
| 4 - Abrasion | 5 - Cut | 3 - Tear | 2 - Puncture |

Meets ANSI/ISEA 105:2016

|          |          |          |
|----------|----------|----------|
| A2       | 1        | 3        |
| CUT/697g | ABRASION | PUNCTURE |

# CUT PROTECTION



POLYURETHANE PALM COATING

## RWG562 S-2XL

- 13 Ga Salt N Pepper HPPE
- Gray PU Palm Coating



4 5 4 3  
4 - Abrasion  
5 - Cut  
4 - Tear  
3 - Puncture

Meets ANSI/ISEA 105:2016



## RWG557 S-2XL

- 13 Ga Orange High Tenacity Nylon With Fiberglass
- Black PU Palm Coating



4 5 4 3  
4 - Abrasion  
5 - Cut  
4 - Tear  
3 - Puncture

Meets ANSI/ISEA 105:2016



## RWG560 XS-2XL

- 13 Ga Gray HPPE with Fiberglass
- Black PU Palm Coating



4 5 4 3  
4 - Abrasion  
5 - Cut  
4 - Tear  
3 - Puncture

Meets ANSI/ISEA 105:2016



## RWG566 XS-2XL

- Touchscreen
- 18 Ga Gray HPPE with Stainless Steel
- Black PU Palm Coating



4 5 2 1  
4 - Abrasion  
5 - Cut  
2 - Tear  
1 - Puncture

Meets ANSI/ISEA 105:2016



## RWG558 XS-2XL

- 13 Ga Hi-Viz Green HPPE w/ Fiberglass and Stainless Steel
- Black PU Palm Coating



4 5 4 3  
4 - Abrasion  
5 - Cut  
4 - Tear  
3 - Puncture

Meets ANSI/ISEA 105:2016



NITRILE PALM COATING

**RWG532** S-2XL

- Touchscreen
- 13 Ga Black HPPE Shell
- Foam NBR Palm Coating



EN388:2003  
 4 - Abrasion  
 3 - Cut  
 4 - Tear  
 3 - Puncture  
 4 3 4 3

Meets ANSI/ISEA 105:2016

|           |          |          |
|-----------|----------|----------|
| <b>A2</b> | <b>3</b> | <b>4</b> |
| CUT/570g  | ABRASION | PUNCTURE |

Individually Polybagged

**RWG533** XS-2XL

- 18 Ga Green HPPE Shell
- Sandy Foam Nitrile Palm Coating



EN388:2003  
 4 - Abrasion  
 3 - Cut  
 4 - Tear  
 1 - Puncture  
 4 3 4 1

Meets ANSI/ISEA 105:2016

|           |          |          |
|-----------|----------|----------|
| <b>A2</b> | <b>3</b> | <b>2</b> |
| CUT/785g  | ABRASION | PUNCTURE |

**RWG537** S-2XL

- 13 Gauge Kevlar® Lycra Outer Shell
- Black Foam Nitrile Palm Coating



EN388:2003  
 4 - Abrasion  
 3 - Cut  
 4 - Tear  
 2 - Puncture  
 4 3 4 2

Meets ANSI/ISEA 105:2016

|           |          |          |
|-----------|----------|----------|
| <b>A2</b> | <b>6</b> | <b>3</b> |
| CUT/624g  | ABRASION | PUNCTURE |

Kevlar® is a registered trademark of DuPont.

**RWG538** XS-2XL

- 18 Ga Green HPPE Outer Shell
- Black Foam Nitrile Palm Coating With Dots
- Reinforced Thumb Crotch



EN388:2003  
 4 - Abrasion  
 3 - Cut  
 4 - Tear  
 1 - Puncture  
 4 3 4 1

Meets ANSI/ISEA 105:2016

|           |          |          |
|-----------|----------|----------|
| <b>A2</b> | <b>4</b> | <b>2</b> |
| CUT/796g  | ABRASION | PUNCTURE |

# CUT PROTECTION



NITRILE PALM COATING

## RWG563 S-2XL

- Salt-N-Pepper HPPE
- Black Foam Nitrile Palm Coating



4 3 4 3  
4 - Abrasion  
3 - Cut  
4 - Tear  
3 - Puncture

Meets ANSI/ISEA 105:2016



## RWG564 S-2XL

- Hi-Viz Green HPPE w/Fiberglass
- Foam Nitrile Palm Coating



4 5 4 4  
4 - Abrasion  
5 - Cut  
4 - Tear  
4 - Puncture

Meets ANSI/ISEA 105:2016



## RWG555 XS-2XL

- 13 Ga Salt-N-Pepper HPPE Shell With Fiberglass
- Foam Nitrile Palm Coating



4 5 4 4  
4 - Abrasion  
5 - Cut  
4 - Tear  
4 - Puncture

Meets ANSI/ISEA 105:2016



## RWG556 S-2XL

- 13 Ga HPPE With Fiberglass
- Black Sandy Nitrile Palm Coating
- Red Smooth Nitrile For Water Proofing



4 5 4 3  
4 - Abrasion  
5 - Cut  
4 - Tear  
3 - Puncture

Meets ANSI/ISEA 105:2016



NITRILE PALM COATING/LATEX PALM COATING

## RWG603 S-2XL

- 13 Ga Pepper HPPE Shell W/ Fiberglass
- Sandy Foam Nitrile Palm Coating
- TPR Overlays



Individually Polybagged  
U.S. Patent No. 9,241,519

Meets ANSI/ISEA 105:2016

|           |          |          |
|-----------|----------|----------|
| <b>A5</b> | <b>5</b> | <b>5</b> |
| CUT/2570g | ABRASION | PUNCTURE |

EN388:2003

4 5 4 4  
4 - Abrasion  
5 - Cut  
4 - Tear  
4 - Puncture

## RWG603R M-2XL

- 15 Ga Pepper HPPE Shell W/ Fiberglass
- Sandy Foam Nitrile Palm Coating
- Reinforced Thumb Crotch
- TPR Overlays



Individually Polybagged  
U.S. Patent No. 9,241,519

Meets ANSI/ISEA 105:2016

|           |          |          |
|-----------|----------|----------|
| <b>A5</b> | <b>5</b> | <b>5</b> |
| CUT/2837g | ABRASION | PUNCTURE |

EN388:2003

4 5 4 4  
4 - Abrasion  
5 - Cut  
4 - Tear  
4 - Puncture

## RWG559 XS-2XL

- 13 Ga Hi-Viz Orange HPPE w/ Fiberglass and Stainless Steel
- Black Sandy Nitrile Palm Coating



Meets ANSI/ISEA 105:2016

|           |          |          |
|-----------|----------|----------|
| <b>A6</b> | <b>6</b> | <b>5</b> |
| CUT/3997g | ABRASION | PUNCTURE |

EN388:2003

4 5 4 4  
4 - Abrasion  
5 - Cut  
4 - Tear  
4 - Puncture

## RWG534 S-2XL

- 13 Ga Salt-N-Pepper HPPE Shell
- Micro Black Foam Nitrile Palm Coating



Meets ANSI/ISEA 105:2016

|           |          |          |
|-----------|----------|----------|
| <b>A2</b> | <b>6</b> | <b>3</b> |
| CUT/645g  | ABRASION | PUNCTURE |

EN388:2003

4 3 4 2  
4 - Abrasion  
3 - Cut  
4 - Tear  
2 - Puncture

## RWG536 M-XL

- 15 Ga Blue and White HPPE Shell
- Sandy Foam Latex Palm Coating



Meets ANSI/ISEA 105:2016

|           |          |          |
|-----------|----------|----------|
| <b>A2</b> | <b>3</b> | <b>3</b> |
| CUT/525g  | ABRASION | PUNCTURE |

EN388:2003

4 3 4 2  
4 - Abrasion  
3 - Cut  
4 - Tear  
2 - Puncture

**CAUTION**  
Product Contains Latex

# CUT PROTECTION GLOVES

## LET'S CREATE THE WORLD'S SAFEST HANDS

### WORLD'S MOST ADVANCED CUT RESISTANT FIBER

Dyneema® Diamond Technology offers maximum protection over traditional materials like aramid, leather, nylon and polyethylene with glass fiber.

It can achieve levels B, C and D based on the latest EN388 2016 standard and levels A2, A3 and A4 on the new ANSI/ISEA 105-2016 standard without the use of glass or steel fiber reinforcement, which may break during use causing skin irritation.

### GREATER COMFORT & DEXTERITY

Dyneema® Diamond Technology fibers are thinner than generic HMPE fibers and 40% less dense than aramid fibers, making them more comfortable, thinner and cooler to the touch, while still providing advanced cut protection.

It also promotes skin-like dexterity, allowing users to perform delicate and precise tasks efficiently.

### HIGHER DURABILITY & COST EFFICIENCY

Cut resistant gloves made with Dyneema® Diamond Technology offer greater abrasion and U.V. resistance and higher durability in comparison to gloves made with leather, aramid and polyethylene with glass fiber.

They can also be laundered and reused multiple times without losing their performance, maximizing cost efficiency.



## DYNEEMA® DIAMOND TECHNOLOGY (A4)

### CUT

1,700-2,000 GRAMS

### ABRASION

10,000+ CYCLES

### TOTAL COST OF OWNERSHIP

9 PAIRS OF GLOVES  
Per employee per year\*  
55% Saving

\*Calculation based on average use in industrial environment



## KEVLAR® (A2)

THE ADDITION OF STEEL OR FIBERGLASS IS NEEDED TO ACHIEVE HIGHER CUT SCORES

500-800 GRAMS

1,000-3,000 CYCLES

26 PAIRS OF GLOVES  
Per employee per year\*

Dyneema® is a registered trademark of DSM. Use of this trademark is prohibited unless strictly authorized.  
Kevlar® is a registered trademark of DuPont.



# Black Dyneema® Diamond Technology

## A Whole New Level Of Cut Protection, Performance & Enhanced Comfort

Dyneema® Diamond Technology, the world's most advanced cut resistant fiber, introduces the latest range of black fibers that delivers the next level up in uncompromising protection and user comfort.

### Innovated For Heavy Duty Performance & Enhanced Comfort

Black Dyneema® Diamond Technology is the first high performance fiber in the market that delivers this level of cut protection without steel or glass fiber reinforcements. This means maximum protection without the discomfort of steel fibers, as well as the brittleness and short protection lifespan of glass fibers.



Enhanced Dirt Masking Properties

Steel & Fiberglass Free

Radiates Heat Away To Help Keep You Cool

Durable & Washable For Long Lasting Protection

13 Ga Black

**RWGD108** S-2XL

EN388:2003



4 - Abrasion  
5 - Cut  
4 - Tear  
3 - Puncture

4 5 4 3

Meets ANSI/ISEA 105:2016



CUT/1788g

ABRASION

PUNCTURE

Black Sandy Nitrile

Excellent Abrasion Resistance

Individually Polybagged

Dyneema® is a trademark of DSM. Use of this trademark is prohibited unless strictly authorized.

# CUT PROTECTION



## RWGD110 S-2XL



4 5 4 4  
 4 - Abrasion  
 5 - Cut  
 4 - Tear  
 4 - Puncture



Black Foam Nitrile



Radiates Heat Away  
To Help Keep You Cool

TPR Overlays  
For Added Protection

Durable & Washable  
For Long Lasting Protection

Individually Polybagged

13 Ga Salt-N-Pepper

U.S. Patent No. 9,241,519

## RWGD100 XS-2XL



4 5 4 4  
 4 - Abrasion  
 5 - Cut  
 4 - Tear  
 4 - Puncture



Individually Polybagged

Radiates Heat Away  
To Help Keep You Cool

Durable & Washable  
For Long Lasting Protection

15 Ga Speckled Hi-Viz Yellow

Black PU

Radiates Heat Away  
To Help Keep You Cool

Durable & Washable  
For Long Lasting Protection



13 Ga Light Gray

Gray PU

## RWGD101 XS-2XL



4 5 4 3  
 4 - Abrasion  
 5 - Cut  
 4 - Tear  
 3 - Puncture



Individually Polybagged

Dyneema® is a trademark of DSM. Use of this trademark is prohibited unless strictly authorized.



# CUT PROTECTION

## RWGD104 S-2XL



4 5 4 3  
 4 - Abrasion  
 5 - Cut  
 4 - Tear  
 3 - Puncture



Black PU



Individually Polybagged

Radiates Heat Away  
To Help Keep You Cool

Durable & Washable  
For Long Lasting Protection

13 Ga Blue Speckled

## RWGD106 S-2XL



4 5 4 4  
 4 - Abrasion  
 5 - Cut  
 4 - Tear  
 4 - Puncture



Individually Polybagged

Reinforced Thumb Crotch

Radiates Heat Away  
To Help Keep You Cool

Black Foam Nitrile

Durable & Washable  
For Long Lasting Protection

13 Ga Salt-N-Pepper

Radiates Heat Away  
To Help Keep You Cool

Durable & Washable  
For Long Lasting Protection



18 Ga Light Blue

Black PU

## RWGD105 XS-2XL



4 4 4 2  
 4 - Abrasion  
 4 - Cut  
 4 - Tear  
 2 - Puncture



Individually Polybagged

Dyneema® is a trademark of DSM. Use of this trademark is prohibited unless strictly authorized.



# CUT PROTECTION GLOVES



Black Foam Nitrile

Durable & Washable  
For Long Lasting Protection



Radiates Heat Away  
To Help Keep You Cool

13 Ga Gray Speckled

## DPG805 M-XL

- 13 Ga TekShell™ HPPE Cut Resistant Fiber
- GripTough™ Sandy Nitrile Palm Dip



Meets ANSI/ISEA 105:2016

|           |          |          |
|-----------|----------|----------|
| <b>A4</b> | <b>4</b> | <b>5</b> |
| CUT/1548g | ABRASION | PUNCTURE |

EN388:2016

|           |                   |
|-----------|-------------------|
|           | 4 - Abrasion      |
|           | X - Coup Test/Cut |
|           | 4 - Tear          |
|           | 4 - Puncture      |
| 4 X 4 4 D | D - ISO Cut Test  |



**TekShell™ HPPE Fiber**  
(High Performance Polyethylene)  
for cut resistance



**GripTough™ Palm Dip**  
has high resistance to oils, gas and some chemicals. It is also extremely abrasion, heat and tensile resistant.



## DPGD809 L-XL

Meets ANSI/ISEA 105:2016

|           |          |          |
|-----------|----------|----------|
| <b>A3</b> | <b>2</b> | <b>4</b> |
| CUT/1534g | ABRASION | PUNCTURE |

EN388:2003

|         |              |
|---------|--------------|
|         | 4 - Abrasion |
|         | 5 - Cut      |
|         | 4 - Tear     |
|         | 3 - Puncture |
| 4 5 4 3 |              |

Individually Polybagged

# COATED PALM GLOVES

**DPG70** M-XL 

- Textured Rubber Palm
- Breathable Knit Back
- Ergonomic Design
- Seamless Fit

EN388:2016



2 1 4 2 X  
 2 - Abrasion  
 1 - Coup Test/Cut  
 4 - Tear  
 2 - Puncture  
 X - ISO Cut Test



**CAUTION**  
 Product Contains Latex

**DPG73** L-2XL 

- Smooth Nitrile Coating
- Breathable Poly Shell
- Elastic Cuff

Tagged Pairs: DPG73TL  
 Three Pack: DPG73-3PK



**DPG75** L 

- Ultimate Grip Performance
- Injection Moulded Palm and Knuckle
- Phenomenal Abrasion Resistance

EN388:2003



2 1 3 1  
 2 - Abrasion  
 1 - Cut  
 3 - Tear  
 1 - Puncture



**DPG76** L-XL 

- Textured Nitrile Palm
- Breathable Knit Back
- Ergonomic Design
- Seamless Fit



**DPG78** L 

- Impact Grip Hybrid
- TPR Impact Guards
- Foam Latex Palm Grip
- Breathable 10 Ga Shell



U.S. Patent No. 9,241,519

**CAUTION**  
 Product Contains Latex

# PERFORMANCE GLOVES



U.S. Patent No. 9,241,519

**DPG780** M - XL

- Performance Mechanic Grip
- Tacky Silicone Fingertip Grips
- PVC Palm Grip Overlays
- TPR Knuckle Guards
- Leather Nail Guards

**DPG212** M - XL

- Rugged Reverse Leather Overlays
- Premium Grade Cowhide Leather
- Reinforced Thumb Saddle



EN388:2003  
  
 2 - Abrasion  
 1 - Cut  
 2 - Tear  
 2 - Puncture  
 2 1 2 2

**DPG216** L - XL

- Split Cowhide Leather Palm
- Breathable Spandex Back
- Reinforced Thumb Saddle



EN388:2016  
  
 3 - Abrasion  
 1 - Coup Test/Cut  
 3 - Tear  
 3 - Puncture  
 X - ISO Cut Test  
 3 1 3 3 X

**DPG20** M-XL

- ToughGrip™ Thumb Saddle
- Padded Palm & Knuckle
- Elastic Wrist Strap

**DPG222** L-XL

- Hi-Dex Nubuck Palm
- Reinforced Fingers and Thumb
- Rapidfit™ Slip-On Cuff

**DPG200** M-2XL

- Water/Oil Resistant Palm
- Durable Double Stitching
- UlnaLock™ Wrist

**DPG217** M-XL

- Foam Padded Knuckle
- Rubberized Overlays
- SecureFit™ Wrist Closure

**DPG870** M-XL

- Rubberized Grip Overlays
- High Visibility Green Back
- Silver Reflective Tape
- RapidFit™ Slip-On Cuff



# PERFORMANCE GLOVES

**DEWALT**

GEAR

## **DPG218** M-XL

- Reinforced Finger & Thumb
- Lightweight & Breathable
- Short Slip-On Cuff
- Foam Padded Knuckle



EN388:2003



3 1 2 1  
3 - Abrasion  
1 - Cut  
2 - Tear  
1 - Puncture

## **DPG210** M-XL

- Memory Gel Padded Palm
- Water/Oil Resistant PVC
- Synthetic Fourchettes
- UlnaLock™ Wrist



## **DPG230** M-XL

- High-Dexterity Fingerless Design
- Double Palm Overlay
- Terry Cloth Brow Wipe
- ToughThread™ Double Stitching



## **DPG250** M-2XL

- Padded Knuckle Guard
- Premium Leather Palm with Gel Padding
- ToughTanned™ Durable Leather Palm
- Vibration Reducing



EN388:2003



3 1 2 1  
3 - Abrasion  
1 - Cut  
2 - Tear  
1 - Puncture



# LEATHER GLOVES

**DPG31** L-XL

- ToughThread™ Double Stitching
- Durable Goatskin Leather
- Elasticized Wrist
- Keystone Thumb



**DPG32** M-XL

- Premium Grain Cow Driver
- Split Leather Palm Overlay
- Elasticized Wrist
- Keystone Thumb



**DPG41** L

- Split Leather Knuckle Strap
- 2 ½" Rubberized Cuff
- Double Leather Palm

# COLD WEATHER GLOVES



## DPG748 L-XL

- Extreme Condition Insulated
- Water Resistant
- Palm & Finger Overlays
- Thermal Lined
- Rubber Pull Tab



## DPG740 M-XL

- Mild Condition Fleece
- Wind/Water Resistant Shell
- Palm & Finger Overlays
- Reinforced Thumb Saddle



## DPG750 M-2XL

- Extreme Condition Insulated
- Wind & Waterproof, Quad Layer, 100g Micro Fleece Liner
- Extended Gauntlet Cuff with Hook & Loop Closure
- Reinforced, Water and Oil Resistant PVC Palm Overlay
- Durable PU Coated Polyester Shell



**DEWALT**

**GEAR**

# COLD WEATHER GLOVES

## DPG755 L-XL

**Thinsulate**  
INSULATION

- Waterproof Insulated
- Thinsulate™ / Hipora® Liner
- Dual Layer Thumb Saddle
- Durable Outer Shell
- Neoprene Pad & Wrist
- Rubberized Grip Overlays



## DPG737 M-XL

- 2-in-1 CWS™ Thermal Gripper
- Wicking Nylon Outer Shell
- Acrylic Thermal Liner
- Microfoam Latex ¾ Dip & Palm

**CAUTION**  
Product Contains Latex



## DPG736 M-XL

- Thermal Gripper
- ¾ Foam Latex Dip Coverage
- Brushed Acrylic Breathable Knit Liner
- Pre-curved Ergonomic Design

EN388:2003



2 2 1 2  
 2 - Abrasion  
 2 - Cut  
 1 - Tear  
 2 - Puncture

**CAUTION**  
Product Contains Latex





WORK HARD. STAY SAFE.®



**HEADQUARTERS**

5305 Distriplex Farms Drive  
Memphis, Tennessee 38141  
877-723-4267 • fax: 901-266-2558  
[www.radians.com](http://www.radians.com)