

Milling Chucks – Morse Taper – SIMIS – Drill Chucks



Milling Chucks
New coolant option available for coolant-thru tools.
Outstanding rigidity and performance
(pg. 120)



<http://ow.ly/rKwCZ>
View the video.



Morse Taper Holders
Techniks Certified for accuracy
(pg. 124)



SIMIS Economy Tooling
ER collet chucks and
end mill holders (pg. 128)



High-Precision Drill Chucks
Better accuracy and holding power
than Jacobs Chucks (pg. 130)



Built for Speed.

All Techniks products are backed by our 100% satisfaction guarantee!

CAT40, CAT50 High-Performance Milling Chucks



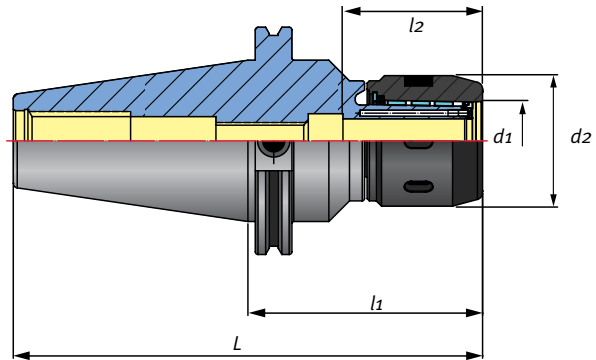
3/4" chuck shown above. Use milling chuck sleeves (page 123) to change tool shank size.



Each Techniks High-Performance Milling Chuck is inspected, tested, and certified for quality, accuracy, and holding power. A full lab report is included with each holder.

Features

- Grips shank up to 5x tighter than ER 40 holders
- Nut seats against the flange when properly tightened (prevents overtightening)
- CoolBLAST coolant-thru standard on all milling chucks



CAT40 Milling Chucks

Part No.	Description	L	l1	l2	d1	d2	Holding Power
23202G	CAT40 x MLD 3/4" - 4"	6.69"	4.0"	2.38"	0.75"	2.24"	350 ft/lbs
23204G	CAT40 x MLD 1" - 4"	6.69"	4.0"	2.23"	1.0"	2.36"	425 ft/lbs
23210G	CAT40 x MLD 1-1/4" - 4.2"	6.89"	4.2"	2.38"	1.25"	2.80"	500 ft/lbs

CAT50 Milling Chucks

Part No.	Description	L	l1	l2	d1	d2	Holding Power
23214G	CAT50 x MLD 3/4" - 4"	8.0"	4.0"	2.38"	0.75"	2.24"	350 ft/lbs
23218G	CAT50 x MLD 1" - 4"	8.0"	4.0"	2.23"	1.0"	2.36"	425 ft/lbs
23222G	CAT50 x MLD 1-1/4" - 4.13"	8.13"	4.13"	2.38"	1.25"	2.80"	500 ft/lbs

Standard Features for Techniks Milling Chucks

CoolBLAST Coolant-Thru



Coolant is channeled directly onto tool path.

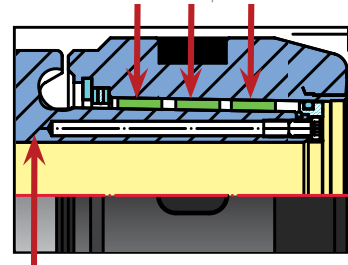
Special Slotted Design



Special slotted design of bore I.D. increases holding power and reduces vibration.

Machined Bearing Cage

High-precision, individually matched needle bearings symmetrically placed for smooth and reliable operation.

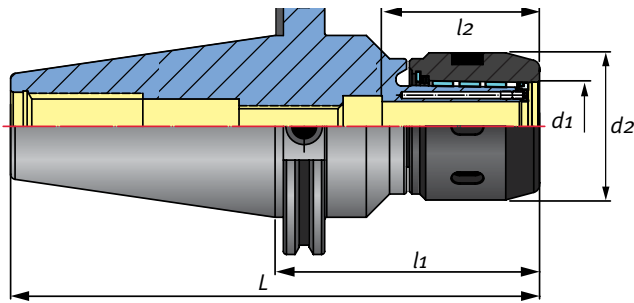


Machined bearing cage ensures accuracy and gripping force.

CAT40, 50 DualDRIVE for Dual-Contact Spindles



3/4" chuck shown with optional coolant cap and Black Gold coolant ring.



Features

- New one-piece design for dual-contact spindles
- Grips shank up to 5x tighter than ER 40 holders
- Nut seats against the flange when properly tightened (prevents overtightening)



See an on machine demonstration video of DualDRIVE compared to standard toolholders at: <http://ow.ly/sUOqL>

Torque Tested to 5x Tighter Grip

Techniks Milling Chucks provide up to 5x tighter grip on the shank than other manufacturer's ER 40 holders with an uncoated nut.

Toolholder Type	Shank Spins At:
Other ER 40 holders	100 ft/lbs
Techniks 3/4" milling chucks	350 ft/lbs
Techniks 1" milling chucks	425 ft/lbs
Techniks 1-1/4" milling chucks	500 ft/lbs

CAT40, CAT50 Milling Chucks with DualDRIVE

Part No.	Description	L	l1	l2	d1	d2	Holding Power
43.463G.64.400	CAT40 x MLD 3/4" - 4" DualDRIVE	6.69"	4.00"	2.38"	0.75"	2.24"	350 ft/lbs
43.463G.68.400	CAT40 x MLD 1" - 4" DualDRIVE	6.69"	4.0"	2.23"	1.0"	2.36"	425 ft/lbs
43.463G.72.420	CAT40 x MLD 1-1/4" - 4.2" DualDRIVE	6.89"	4.20"	2.38"	1.25"	2.80"	500 ft/lbs
44.463G.64.400	CAT50 x MLD 3/4" - 4" DualDRIVE	8.00"	4.00"	2.38"	0.75"	2.24"	350 ft/lbs
44.463G.68.400	CAT50 x MLD 1" - 4" DualDrive	8.0"	4.0"	2.23"	1.0"	2.36"	425 ft/lbs
44.463G.72.413	CAT50 x MLD 1-1/4" - 4.13" DualDRIVE	8.13"	4.13"	2.38"	1.25"	2.80"	500 ft/lbs

Coolant Cap option for all spindle types

Use coolant cap and Black Gold ring for coolant-thru tools.

- Maximum chip removal, increase feed rates, extend tool life



Insert Black Gold coolant ring into cap



Cap screws onto end of milling chuck



Coolant-thru tool installed



Use coolant cap with Black Gold ER25 or ER40 coolant rings. Select the coolant ring to fit your shank size. See page 60

Part No.	Description	Ring
19496G	For 3/4" chuck	ER25
19489G	For 1-1/4" chuck	ER40

BT40, HSK63A, and HSK100A Milling Chucks



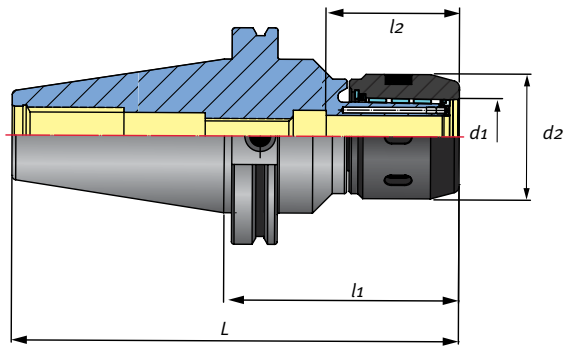
1-1/4" chuck shown above. Use milling chuck sleeves (page 123) to change tool shank size.



Each Techniks High-Performance Milling Chuck is inspected, tested, and certified for quality, accuracy, and holding power. A full lab report is included with each holder.

Features

- Grips shank up to 5x tighter than ER 40 holders
- Nut seats against the flange when properly tightened (prevents overtightening)
- CoolBLAST coolant-thru standard on all milling chucks



BT40 Milling Chucks

Part No.	Description	L	l1	l2	d1	d2	Holding Power
15994G	BT40 X MLD 3/4" - 3.15	5.75"	3.15"	1.97"	0.75"	2.22"	350 ft/lbs
15995G	BT40 X MLD 1" - 3.15	5.75"	3.15"	2.07"	1.0"	2.36"	425 ft/lbs
15996G	BT40 x MLD 1-1/4" - 4"	6.57"	4"	2.62"	1.25"	2.80"	500 ft/lbs



3/4" chuck shown above. Use milling chuck sleeves (page 123) to change tool shank size.



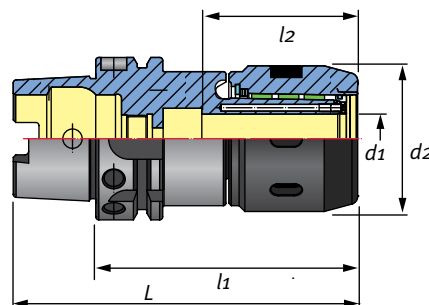
Tightening
Stands
pg. 210



Retention
Knobs
pg. 204



Wrenches
pg. 208



For coolant-thru tools order the coolant ring that fits your shank size (pg. 121)



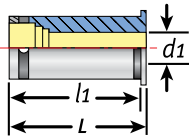
HSK63A and HSK100A Milling Chucks

Part No.	Description	L	l1	l2	d1	d2	Holding Power
33232G	HKS63A X MLD 3/4" - 4"	5.30"	4"	2.01"	.75"	2.22"	350 ft/lbs
33236G	HSK63A x MLD 1-1/4" - 4.72"	5.98"	4.72"	2.65"	1.25"	2.80"	500 ft/lbs
33252G	HSK100A X MLD 3/4" - 4.72"	6.70"	4.72"	2.01"	.75"	2.22"	350 ft/lbs
33256G	HSK100A x MLD 1-1/4" - 4.72"	6.70"	4.72"	2.65"	1.25"	2.79"	500 ft/lbs

Precision Reduction Sleeves for Milling Chucks



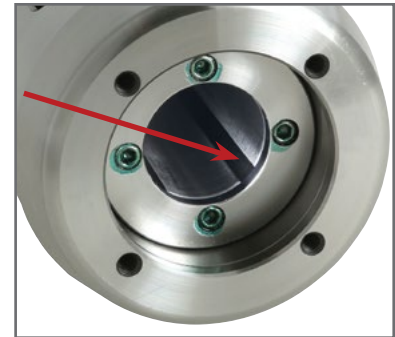
Use sleeves to change tool shank sizes just like you would collets.



Milling Chuck Reduction Sleeves

- For inch and metric shanks
- T.I.R only .0001"
- All surfaces precision ground for maximum accuracy
- Maximize your milling chuck capability

Special slotted design (right) of bore I.D. increases holding power and reduces vibration.



Insert sleeve into chuck, then insert cutting tool, and tighten chuck last.

3/4" O.D. Reduction Sleeves for 3/4" Chucks

Part No.	Description	d1	l1	L
84126-1/8	3/4" O.D., x 1/8" I.D.	1/8"	1.93"	2.09"
84126-3/16	3/4" O.D., x 3/16" I.D.	3/16"	1.93"	2.09"
84126-1/4	3/4" O.D., x 1/4" I.D.	1/4"	1.93"	2.09"
84126-5/16	3/4" O.D., x 5/16" I.D.	5/16"	1.93"	2.09"
84126-3/8	3/4" O.D., x 3/8" I.D.	3/8"	1.93"	2.09"
84126-7/16	3/4" O.D., x 7/16" I.D.	7/16"	1.93"	2.09"
84126-1/2	3/4" O.D., x 1/2" I.D.	1/2"	1.93"	2.09"
84126-9/16	3/4" O.D., x 9/16" I.D.	9/16"	1.93"	2.09"
84126-5/8	3/4" O.D., x 5/8" I.D.	5/8"	1.93"	2.09"
84126-06	3/4" O.D., x 6mm I.D.	6mm	1.93"	2.09"
84126-08	3/4" O.D., x 8mm I.D.	8mm	1.93"	2.09"
84126-10	3/4" O.D., x 10mm I.D.	10mm	1.93"	2.09"
84126-12	3/4" O.D., x 12mm I.D.	12mm	1.93"	2.09"

1" O.D. Reduction Sleeves for 1" Chucks

Part No.	Description	d1	l1	L
84128-1/2	SSC 1" - 1/2" I.D.	1/2"	.98"	.79"
84128-1/4	SSC 1" - 1/4" I.D.	1/4"	.98"	.79"
84128-1/8	SSC 1" - 1/8" I.D.	1/8"	1.10"	.67"
84128-3/16	SSC 1" - 3/16" I.D.	3/16"	1.10"	.67"
84128-3/4	SSC 1" - 3/4" I.D.	3/4"	1.54"	.59"
84128-3/8	SSC 1" - 3/8" I.D.	3/8"	1.54"	.59"
84128-5/16	SSC 1" - 5/16" I.D.	5/16"	1.77"	-
84128-5/8	SSC 1" - 5/8" I.D.	5/8"	1.77"	-
84128-7/16	SSC 1" - 7/16" I.D.	7/16"	1.85"	-
84128-7/8	SSC 1" - 7/8" I.D.	7/8"	1.85"	-
84128-9/16	SSC 1" - 9/16" I.D.	9/16"	2.36"	-

1-1/4" O.D. Reduction Sleeves for 1-1/4" Chucks

Part No.	Description	d1	l1	L
84127-1/8	1-1/4" O.D., x 1/8" I.D.	1/8"	2.56"	2.75"
84127-3/16	1-1/4" O.D., x 3/16" I.D.	3/16"	2.56"	2.75"
84127-1/4	1-1/4" O.D., x 1/4" I.D.	1/4"	2.56"	2.75"
84127-5/16	1-1/4" O.D., x 5/16" I.D.	5/16"	2.56"	2.75"
84127-3/8	1-1/4" O.D., x 3/8" I.D.	3/8"	2.56"	2.75"
84127-7/16	1-1/4" O.D., x 7/16" I.D.	7/16"	2.56"	2.75"
84127-1/2	1-1/4" O.D., x 1/2" I.D.	1/2"	2.56"	2.75"
84127-9/16	1-1/4" O.D., x 9/16" I.D.	9/16"	2.56"	2.75"
84127-5/8	1-1/4" O.D., x 5/8" I.D.	5/8"	2.56"	2.75"
84127-3/4	1-1/4" O.D., x 3/4" I.D.	3/4"	2.56"	2.75"
84127-7/8	1-1/4" O.D., x 7/8" I.D.	7/8"	2.56"	2.75"
84127-1	1-1/4" O.D., x 1.0" I.D.	1.0"	2.56"	2.75"
84127-08	1-1/4" O.D., x 8mm I.D.	8mm	2.56"	2.75"
84127-10	1-1/4" O.D., x 10mm I.D.	10mm	2.56"	2.75"
84127-12	1-1/4" O.D., x 12mm I.D.	12mm	2.56"	2.75"
84127-14	1-1/4" O.D., x 14mm I.D.	14mm	2.56"	2.75"
84127-16	1-1/4" O.D., x 16mm I.D.	16mm	2.56"	2.75"
84127-20	1-1/4" O.D., x 20mm I.D.	20mm	2.56"	2.75"
84127-25	1-1/4" O.D., x 25mm I.D.	25mm	2.56"	2.75"

Precision CAT40, CAT50 Morse Taper Toolholders



Techniks Certified Tooling Features

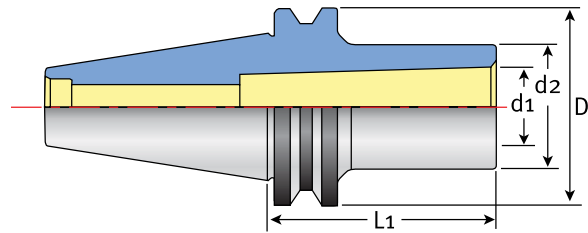
- Taper ground to AT3 accuracy or better
- .0002" runout from taper to tool pocket
- Each holder lab certified for accuracy



Tightening
Stands
pg. 210

Retention
Knobs
pg. 209

Wrenches
pg. 208



CAT40 Morse Taper Toolholders

Part No.	Taper	Size	L1	d1	d2	D
22611	CAT40 Morse Taper	MT#1	1.75"	.475"	.984"	2.5"
22613	CAT40 Morse Taper	MT#2	2.00"	.7"	1.26"	2.5"
22615	CAT40 Morse Taper	MT#3	2.75"	.937"	1.575"	2.5"
22617	CAT40 Morse Taper	MT#4	3.75"	1.231"	1.889"	2.5"

CAT50 Morse Taper Toolholders

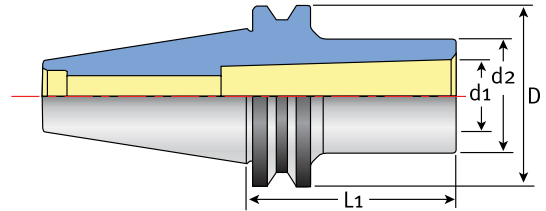
Part No.	Taper	Size	L1	d1	d2	D
22623	CAT50 Morse Taper	MT#2	2.36"	.7"	1.26"	3.875"
22625	CAT50 Morse Taper	MT#3	2.56"	.937"	1.575"	3.875"
22627	CAT50 Morse Taper	MT#4	3.75"	1.231"	1.889"	3.875"
22629	CAT50 Morse Taper	MT#5	4.13"	1.75"	2.48"	3.875"

Precision BT30, BT40, BT50 Morse Taper Toolholders



Techniks Certified Tooling Features

- Taper ground to AT3 accuracy or better
- .0002" runout from taper to tool pocket
- Each holder lab certified for accuracy



BT30 Morse Taper Toolholders

Part No.	Taper	Size	L1	d1	d2	D
17001	BT30 Morse Taper	MT#1	1.77"	.475"	.984"	1.811"
17006	BT30 Morse Taper	MT#2	2.36"	.7"	1.26"	1.811"
17010	BT30 Morse Taper	MT#3	3.14"	.937"	1.575"	1.811"

BT40 Morse Taper Toolholders

Part No.	Taper	Size	L1	d1	d2	D
17011	BT40 Morse Taper	MT#1	1.77"	.475"	.984"	2.48"
17014	BT40 Morse Taper	MT#2	1.96"	.7"	1.26"	2.48"
17018	BT40 Morse Taper	MT#3	2.75"	.937"	1.575"	2.48"
17023	BT40 Morse Taper	MT#4	3.75"	1.231"	1.889"	2.48"

BT50 Morse Taper Toolholders

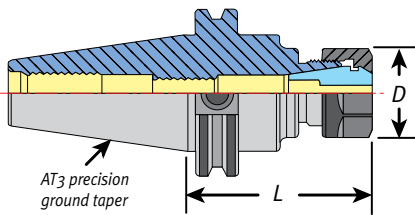
Part No.	Taper	Size	L1	d1	d2	D
17036	BT50 Morse Taper	MT#2	2.36"	.7"	1.26"	3.937"
17039	BT50 Morse Taper	MT#2-135	5.31"	.7"	1.26"	3.937"
17042	BT50 Morse Taper	MT#3	2.56"	.937"	1.575"	3.937"
17046	BT50 Morse Taper	MT3-150	5.9"	.937"	1.575"	3.937"
17048	BT50 Morse Taper	MT#4	3.74"	1.231"	1.889"	3.937"
17051	BT50 Morse Taper	MT4-180	7.08"	1.231"	1.889"	3.937"
17053	BT50 Morse Taper	MT#5	4.13"	1.75"	2.48"	3.937"

CAT40 and CAT50 SIMIS ER Collet Chucks



Comparison of SIMIS Economy Collet Chucks & Techniks

	SIMIS	Techniks Certified
Lab Certified for Accuracy & Balance	NO	YES
Balance Specification	YES - uncoated	YES - PowerCOAT
DIN B Coolant Available	18,000 RPMs	25,000 RPMs
End Mill Bore Tolerance	NO	YES
Available Sizes	most common	wide selection



ER Nut Included

Part No.	Description
11116	ER16 uncoated hex nut
11120	ER20 uncoated hex nut
11125	ER25 uncoated slotted nut
11132	ER32 uncoated slotted nut
11140	ER40 uncoated slotted nut



CAT40 ER Toolholders

Part No.	Description	L	D	Collet	Max. Shank	Stop Screw	Wrench
CAT40ER11-3	CAT40 x ER11-3"	3	.748"	ER11	.275"	06081	04608
CAT40ER11-4	CAT40 x ER11-4"	4	.748	ER11	.275"	06081	04608
CAT40ER11-6	CAT40 x ER11-6"	6	.748	ER11	.275"	06081	04608
CAT40ER16-2.76	CAT40 x ER16-2.76"	2.76"	1.08"	ER16	.406"	06083	04609 hex
CAT40ER16-4	CAT40 x ER16-4"	4"	1.08"	ER16	.406"	06083	04609 hex
CAT40ER20-2.76	CAT40 x ER20-2.76"	2.76"	1.34"	ER20	.512"	06087	04610 hex
CAT40ER20-4	CAT40 x ER20-4"	4"	1.34"	ER20	.512"	06087	04610 hex
CAT40ER20-6	CAT40 x ER20-6"	6"	1.34"	ER20	.512"	06087	04610 hex
CAT40ER25-2.76	CAT40 x ER25-2.76"	2.76"	1.65"	ER25	.63"	06089	04615
CAT40ER25-4	CAT40 x ER25-4"	4"	1.65"	ER25	.63"	06089	04615
CAT40ER32-2.76	CAT40 x ER32-2.76"	2.76"	1.97"	ER32	.788"	06089	04616
CAT40ER32-4	CAT40 x ER32-4"	4"	1.97"	ER32	.788"	06089	04616
CAT40ER40-3.15	CAT40 x ER40-3.15"	3.15"	2.48"	ER40	1.023"	06091	04617

CAT50 ER Toolholders

Part No.	Description	L	D	Collet	Max. Shank	Stop Screw	Wrench
CAT50ER16-4	CAT50 x ER16-4	4"	1.08"	ER16	.406"	06083	04609 hex
CAT50ER16-6	CAT50 x ER16-6	6"	1.08"	ER16	.406"	06083	04609 hex
CAT50ER20-4	CAT50 x ER20-4	4"	1.34"	ER20	.512"	06087	04610 hex
CAT50ER20-6	CAT50 x ER20-6	6"	1.34"	ER20	.512"	06087	04610 hex
CAT50ER32-4	CAT50 x ER32-4	4"	1.97"	ER32	.788"	06089	04616
CAT50ER32-6	CAT50 x ER32-6	6"	1.97"	ER32	.788"	06089	04616
CAT50ER40-4	CAT50 x ER40-4	4"	2.48"	ER40	1.023"	06091	04617

CAT40 and CAT50 SIMIS End Mill Holders



Tightening
Stands
pg. 210



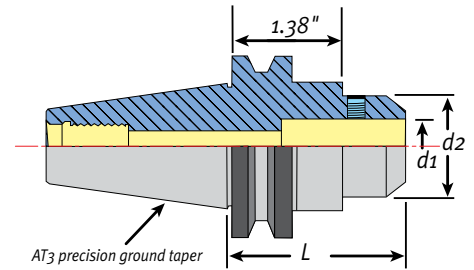
Retention
Knobs
pg. 209



Wrenches
pg. 208

Comparison of SIMIS Economy End Mill Holders & Techniks

	SIMIS	Techniks Certified
Lab Certified for Accuracy & Balance	NO	YES
Balance Specification	8,000 RPMs	10,000 RPMs
DIN B Coolant Available	NO	YES
End Mill Bore Tolerance	H7	H5
Available Sizes	most common	wide selection



CAT40 End Mill Holders

Part No.	Description – d1	L	d2
CAT40SLN1/8	CAT40 x SLN - 1/8"	2.375"	.69"
CAT40SLN3/16	CAT40 x SLN - 3/16"	2.5"	.69"
CAT40SLN1/4	CAT40 x SLN - 1/4"	3"	.78"
CAT40SLN1/4-1.75	CAT40 x SLN - 1/4"	1.75"	.795"
CAT40SLN3/8	CAT40 x SLN - 3/8"	3"	.88"
CAT40SLN3/8-1.75	CAT40 x SLN - 3/8"	1.75"	.88"
CAT40SLN1/2	CAT40 x SLN - 1/2"	3"	1.25"
CAT40SLN1/2-1.75	CAT40 x SLN - 1/2"	1.75"	1.5"
CAT40SLN5/8	CAT40 x SLN - 5/8"	3"	1.5"
CAT40SLN3/4	CAT40 x SLN - 3/4"	3.5"	1.75"
CAT40SLN3/4-1.75	CAT40 x SLN - 3/4"	1.75"	1.75"
CAT40SLN1	CAT40 x SLN - 1.0"	4"	2"
CAT40SLN1-1.75	CAT40 x SLN - 1.0"	1.75"	1.75"
CAT40SLN1 1/4-2	CAT40 x SLN - 1-1/4"	2"	1.75"

CAT50 End Mill Holders

Part No.	Description – d1	d2	L
CAT50SLN1/4	CAT50 x SLN - 1/4"	.78	4"
CAT50SLN3/8	CAT50 x SLN - 3/8"	1.0"	4"
CAT50SLN1/2	CAT50 x SLN - 1/2"	1.25"	4"
CAT50SLN5/8	CAT50 x SLN - 5/8"	1.5"	4"
CAT50SLN3/4	CAT50 x SLN - 3/4"	1.75"	4"
CAT50SLN1	CAT50 x SLN - 1.0"	2"	4"
CAT50SLN11/4	CAT50 x SLN - 1-1/4"	2.5"	4.6"

HP3 High Precision and Keyless Jacobs Drill Chucks

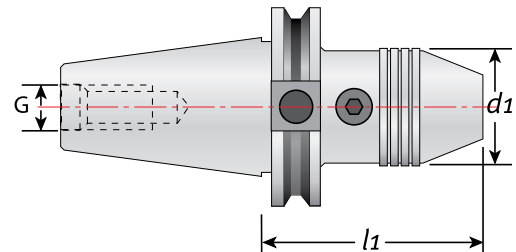


Features

- Capacity from 1/16" to 1/2"
- 4 times greater holding power
- Balanced to 10,000 RPM

Our HP3 High-Precision Drill Chucks have the flexibility to hold a wide range of shank sizes and deliver superior performance too. Maximum runout (T.I.R.) is only .0008".

They also feature a one-piece design that provides greater rigidity and safety because the chuck cannot break free during operation.



HP3 Precision Drill Toolholders (ISO, BT, HSK)

Part No.	Description	d1	l1	G
24.05.046.005	CAT40 HP3 drill chuck 1/2"	50	103	-
17.05.046.005	CAT50 HP3 drill chuck 1/2"	50	87.5	-
64.05.046.051	ISO30 HP3 drill chuck 1/2"	50	103	M12
67.05.046.001	BT30 HP3 drill chuck 1/2"	50	92.5	M12
39.05.046.001	BT40 HP3 drill chuck 1/2"	50	95.5	M16
93.05.046.003	HSK 63A HP3 drill chuck 1/2"	50	123.5	-
171.05.046.003	HSK63F HP3 drill chuck 1/2"	50	123.5	-



Features

- For milling machines & drilling machines
- All hardened parts for long life and safety
- Use with CAT or BT holders (pg. 130)

Keyless Jacobs Taper Drill Chucks

Part No.	Description	Length Closed	Outer Diameter	Range
82150	08S x JT1	76mm	38mm	0 - 5/16"
82153	13S x JT6	102mm	49mm	0 - 1/2"
82151-JT33	10S x JT33	92mm	43mm	0 - 3/8"
82153-JT33	13S x JT33	102mm	49mm	0 - 1/2"

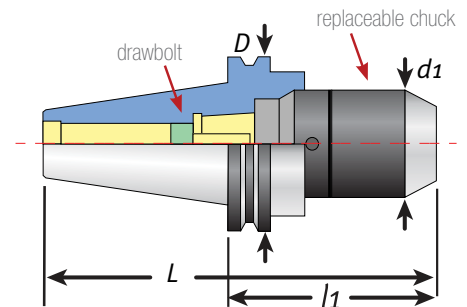
CAT, BT, HSK Replaceable Keyless Drill Chucks



Features

- 3 times more holding power than other chucks
- Holds non-standard shank sizes up to 1/2"
- Replaceable chuck is held by a drawbolt

Order Part No. 82164 replaceable chuck



CAT Replaceable Drill Chucks

Part No.	Description	l1	L	D	d1
22403	CAT40 SPU x 1/2" - 4"	101.6mm	169.9mm	63.5mm	50mm
22405	CAT50 SPU x 1/2" - 4"	101.6mm	203.2mm	98.4mm	50mm
82164	SPU drill chuck (replacement)				
82172	SPU drill chuck wrench (replacement)				

BT Replaceable Drill Chucks

Part No.	Description	l1	L	D	d1
16456-W	BT30 x SPU 13mm - 110mm (no slots)	110mm	170.4mm	46mm	50mm
16456	BT30 x SPU 13mm - 110mm	110mm	170.4mm	46mm	50mm
16466	BT40 x SPU 13mm - 100mm	100mm	177.4mm	63mm	50mm
16476	BT50 x SPU 13mm - 100mm	100mm	213.8mm	100mm	50mm
82164	SPU drill chuck (replacement)				
82172	SPU drill chuck wrench (replacement)				

HSK Replaceable Drill Chucks

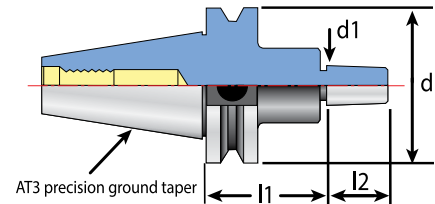
Part No.	Description	l1	L	D	d1
34905	HSK 63A x SPU 13mm - 150mm	150mm	182.5mm	63mm	50mm
34905-F	HSK 63F x SPU 13mm - 150mm	150mm	175mm	63mm	50mm
82164	SPU drill chuck (replacement)				
82172	SPU drill chuck wrench (replacement)				

CAT and BT Toolholders For Jacobs Taper Drill Chucks



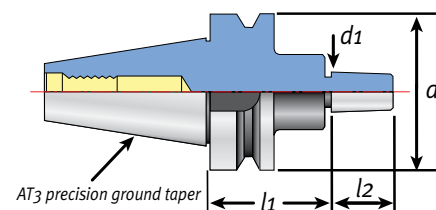
Features

- Better T.I.R. and rigidity than standard drill chucks
- Taper ground to AT3 accuracy
- Use with keyless Jacobs chucks



CAT Toolholders For Jacobs Taper Drill Chucks

Part No.	Description	l1	l2	d1	Jacobs Taper
22511	CAT40 x JT2 - 1.57"	1.57"	.875"	.559"	2
22512	CAT40 x JT3 - 1.57"	1.57"	1.2"	.811"	3
22513	CAT40 x JT6 - 1.57"	1.57"	.945"	.676"	6
22515	CAT40 x JT33 - 1.57"	1.57"	.945"	.624"	33
22521	CAT50 x JT2 - 1.57"	1.57"	.875"	.559"	2
22527	CAT50 x JT3 - 1.57"	1.57"	1.2"	.811"	3
22529	CAT50 x JT4 - 1.57"	1.57"	1.656"	1.124"	4
22531	CAT50 x JT5 - 1.57"	1.57"	1.875"	1.413"	5
22523	CAT50 x JT6 - 1.57"	1.57"	.945"	.676"	6
22525	CAT50 x JT33 - 1.57"	1.57"	.945"	.624"	33



BT Toolholders For Jacobs Taper Drill Chucks

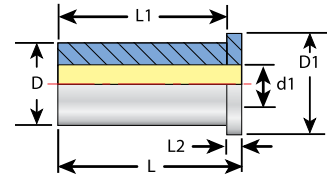
Part No.	Description	l1	l2	d1
16502	BT30 x JT2 - 45mm	45mm	20mm	14.199
16504	BT30 x JT33 - 45mm	45mm	24mm	15.850
16506	BT30 x JT6 - 45mm	45mm	24mm	17.170
16522	BT40 x JT2 - 45mm	45mm	20mm	14.199
16523	BT40 x JT33 - 45mm	45mm	24mm	15.850
16524	BT40 x JT6 - 45mm	45mm	24mm	17.170
16542	BT50 x JT2 - 45mm	45mm	20mm	14.199
16543	BT50 x JT33 - 45mm	45mm	24mm	15.850
16544	BT50 x JT6 - 45mm	45mm	24mm	17.170

Precision Reduction Sleeves for Hydraulic Toolholders



Features

- Use sleeves with your hydraulic toolholders to run a variety of shank sizes
- T.I.R. of only .00012"
- Sealed to 1,000 P.S.I. for coolant applications



Inch O.D. / Inch I.D. Reduction Sleeves for Hydraulic Toolholders

Part No.	Description	d1	D	D1	L	L1	L2
19474-1/8	3/4" OD - 1/8" ID	.125"	.75"	.945"	2.083"	2.003"	.079"
19474-3/16	3/4" OD - 3/16" ID	.1875"	.75"	.945"	2.083"	2.003"	.079"
19474-1/4	3/4" OD - 1/4" ID	.25"	.75"	.945"	2.083"	2.003"	.079"
19474-5/16	3/4" OD - 5/16" ID	.3125"	.75"	.945"	2.083"	2.003"	.079"
19474-3/8	3/4" OD - 3/8" ID	.375"	.75"	.945"	2.083"	2.003"	.079"
19474-7/16	3/4" OD - 7/16" ID	.4375"	.75"	.945"	2.083"	2.003"	.079"
19474-1/2	3/4" OD - 1/2" ID	.5"	.75"	.945"	2.083"	2.003"	.079"
19474-5/8	3/4" OD - 5/8" ID	.625"	.75"	.945"	2.083"	2.003"	.079"
19478-1/4	1-1/4" OD - 1/4" ID	.25"	1.25"	1.575"	2.598"	2.441"	.157"
19478-5/16	1-1/4" OD - 5/16" ID	.3125"	1.25"	1.575"	2.598"	2.441"	.157"
19478-3/8	1-1/4" OD - 3/8" ID	.375"	1.25"	1.575"	2.598"	2.441"	.157"
19478-1/2	1-1/4" OD - 1/2" ID	.5"	1.25"	1.575"	2.598"	2.441"	.157"
19478-5/8	1-1/4" OD - 5/8" ID	.625"	1.25"	1.575"	2.598"	2.441"	.157"
19478-3/4	1-1/4" OD - 3/4" ID	.75"	1.25"	1.575"	2.598"	2.441"	.157"
19478-7/8	1-1/4" OD - 7/8" ID	.875"	1.25"	1.575"	2.598"	2.441"	.157"
19478-1	1-1/4" OD - 1" ID	1.0"	1.25"	1.575"	2.598"	2.441"	.157"

Metric O.D. / Inch I.D. Reduction Sleeves for Hydraulic Toolholders

Part No.	Description	d1	D	D1	L	L1	L2
19462-1/4	20mm OD - 1/4" ID	.25"	20mm	24mm	52.9mm	50.9mm	2mm
19462-5/16	20mm OD - 5/16" ID	.3125"	20mm	24mm	52.9mm	50.9mm	2mm
19462-3/8	20mm OD - 3/8" ID	.375"	20mm	24mm	52.9mm	50.9mm	2mm
19462-7/16	20mm OD - 7/16" ID	.4375"	20mm	24mm	52.9mm	50.9mm	2mm
19462-1/2	20mm OD - 1/2" ID	.5"	20mm	24mm	52.9mm	50.9mm	2mm
19462-5/8	20mm OD - 5/8" ID	.625"	20mm	24mm	52.9mm	50.9mm	2mm

Metric O.D. / Metric I.D. Reduction Sleeves for Hydraulic Toolholders

Part No.	Description	d1	D	D1	L	L1	L2
19462-06	20mm OD - 6mm ID	6mm	20mm	24mm	52.90mm	50.9mm	2mm
19462-08	20mm OD - 8mm ID	8mm	20mm	24mm	52.90mm	50.9mm	2mm
19462-10	20mm OD - 10mm ID	10mm	20mm	24mm	52.90mm	50.9mm	2mm
19462-12	20mm OD - 12mm ID	12mm	20mm	24mm	52.90mm	50.9mm	2mm
19462-14	20mm OD - 14mm ID	14mm	20mm	24mm	52.90mm	50.9mm	2mm
19462-16	20mm OD - 16mm ID	16mm	20mm	24mm	52.90mm	50.9mm	2mm

Measurement Guide for Special Order Toolholders

V-flange CNC machine
make, model and spindle

v-flange tool #1 dimensions

D = _____
F = _____
W = _____
A = _____
N = _____

v-flange tool #2 dimensions

D = _____
F = _____
W = _____
A = _____
N = _____

HSK CNC machine
make, model and spindle

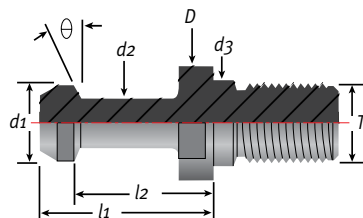
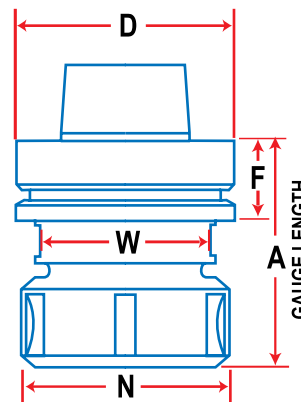
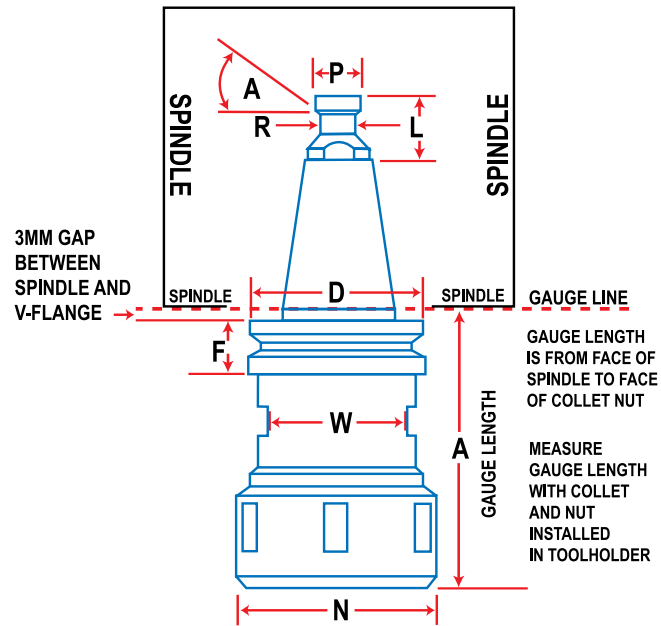
HSK tool #1 dimensions

D = _____
F = _____
W = _____
A = _____
N = _____

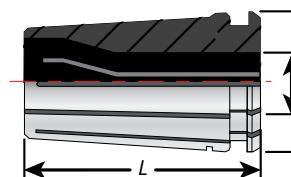
HSK tool #2 dimensions

D = _____
F = _____
W = _____
A = _____
N = _____

Fill in all the required dimensions (left).
Then, fax or phone in your order for a fast quote.



For special order retention knobs see page 207 or call (800) 597-3921



For special order collets see page 68 or call (800) 597-3921